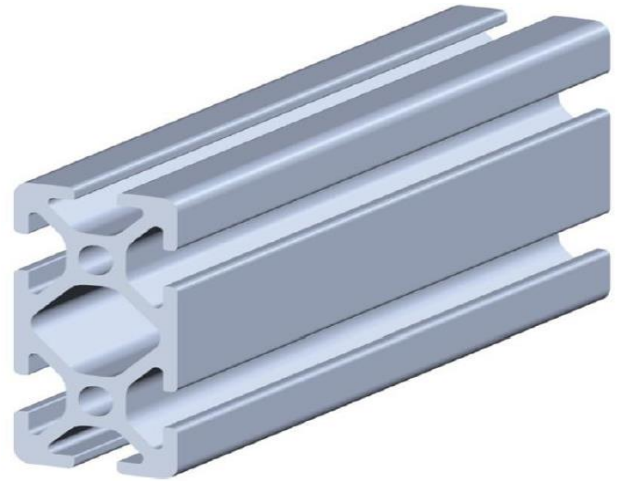


Professionally approved products.
Datasheet
Grid 5

RS Stock number 850-8482



I_x	5,12 cm ⁴
I_y	1,40 cm ⁴
W_x	2,56 cm ³
W_y	1,40 cm ³
G	0,89 kg/m
A	3,29 cm ²
VPE / PU	1 pcs.
L	1000 mm

Technical data strut profiles

EN AW – AlMgSi0,5

DIN EN 573

Tolerances

DIN EN 12020-2

Anodizing process

E6C0

