

Technical data

Column Number	2
Max. Load	60KG
Max. Speed	15mm/s
Input Voltage	100-240V
Lowest Position	726mm
Highest Position	1176mm
Desktop Size	Length 1200mm Width 600mm
Duty Cycle	10%(Work continuously for 2 minutes, pause for 18 minutes)
Applicable Temperature	0~40℃

The product has been designed to meet Commission Regulation with regard to ecodesign requirements for electric power consumption of low power consumption mode condition of electrical and electronic household equipment.

The technical information of low power consumption mode condition:

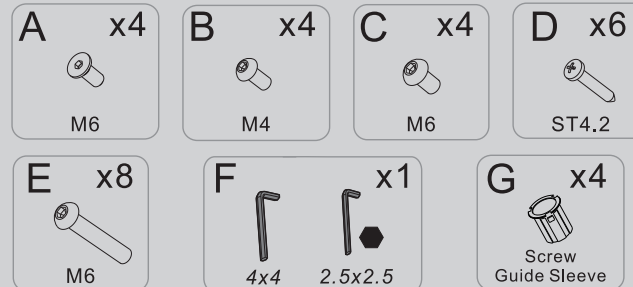
Mode	Power consumption (Watts)	The period (Minutes)
Low power consumption mode condition	≤0.5W	1min

The website URL of the electronic instruction manual:

Power Supply	
Manufacturer: Shenzhen RBD Technology Corporation	
Model: W49RA628-290018	Average Active Efficiency: ≥88.0%
Rated Input: 100-240VAC,50/60Hz,1.5A	Efficiency at Low Load (10%): 84.44%
Rated Output: 29.0VDC,1.8A,52.2W	No-load Power Consumption: ≤0.21 W

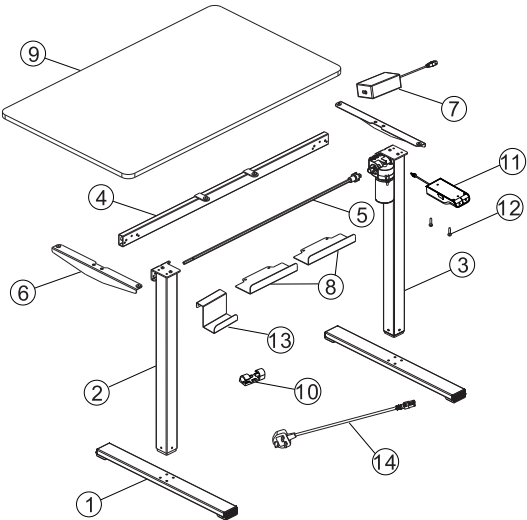
Accessory list

Attention: The drawings below are only for reference which might be slightly different from the actual object, please in kind prevail. Any tools missing or installation problems, please contact the customer service firstly.



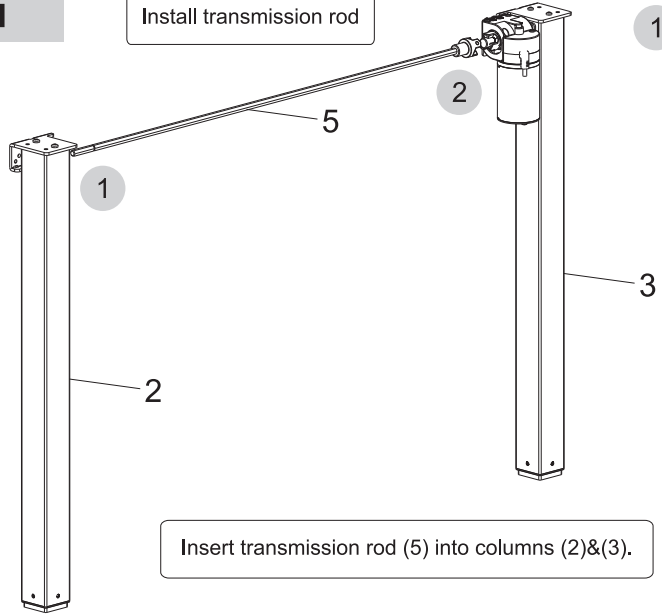
Part list

No.	Part	Qty	No.	Part	Qty	No.	Part	Qty
①	Feet	2	②	Left Lifting Column	1	③	Right Lifting Column	1
④	Beam	1	⑤	Transmission rod	1	⑥	Supporting Plate	2
⑦	Power adaptor	1	⑧	Baffle	2	⑨	Desktop	1
⑩	Cable tie	4	⑪	Handset	1	⑫	Screw for handset	2
⑬	Power adaptor bracket	1	⑭	AC power cable	1			

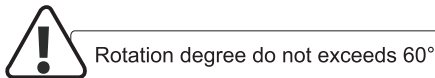
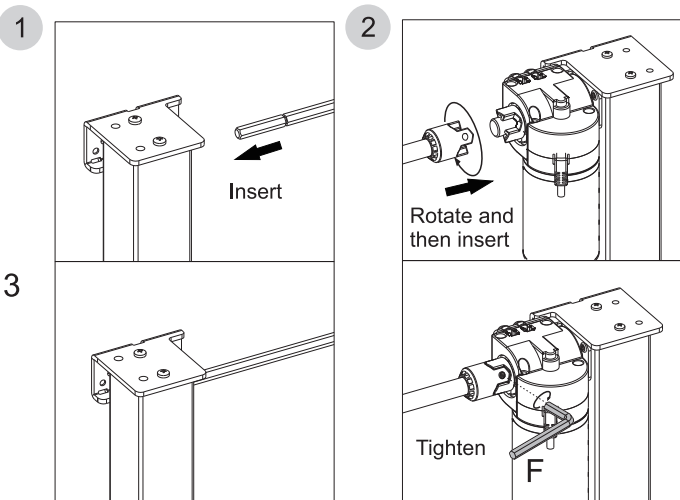


STEP1

Install transmission rod

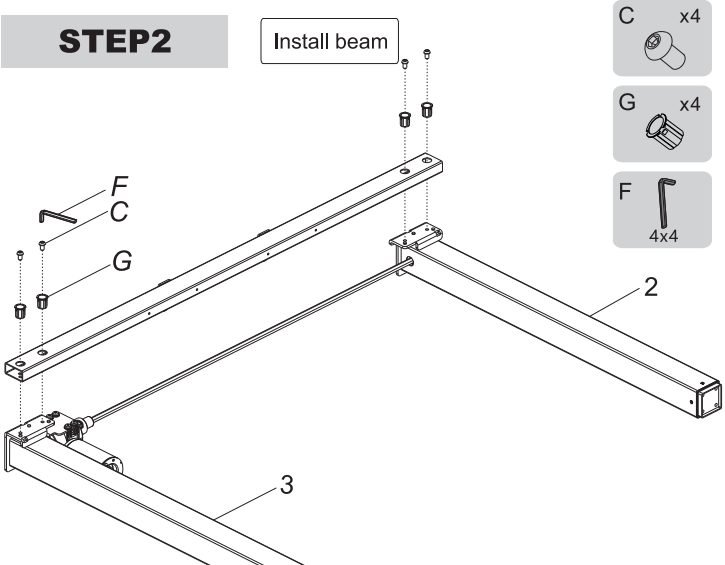


Insert transmission rod (5) into columns (2)&(3).



STEP2

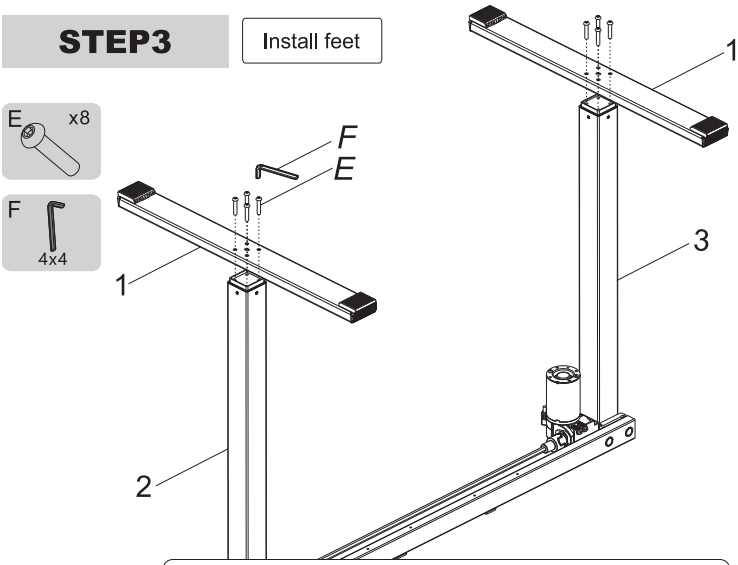
Install beam



Insert the screw guide sleeves (G) into the beam holes first, then connect the beam (4) to the left and right columns (2) (3) with screws (C), and use 4x4 allen key (F) to tighten them.

STEP3

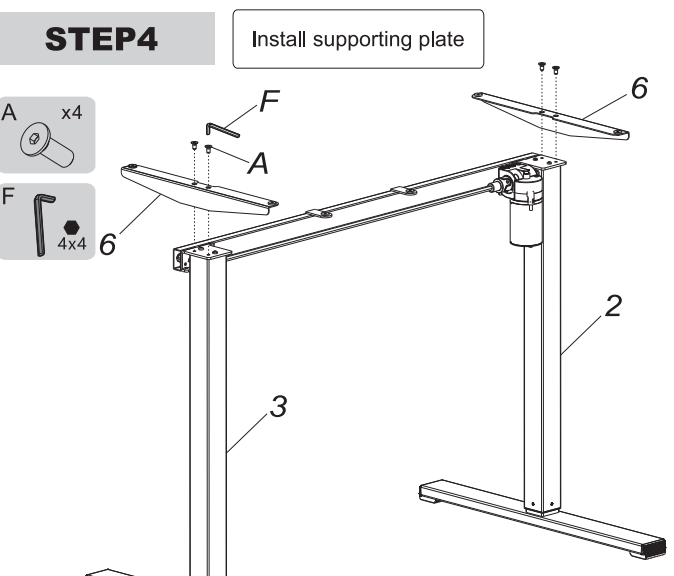
Install feet



Assemble feet(1) to lifting columns (2) (3), use 4x4 allen key (F) to tighten the screws(E).

STEP4

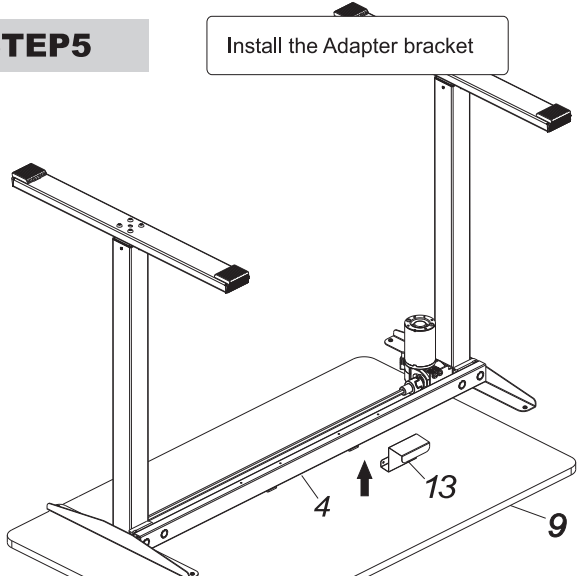
Install supporting plate



Connect the support plate (6) to the left and right lifting columns (2) (3) with screw (A) and tighten them with a 4x4 allen key (F).

STEP5

Install the Adapter bracket



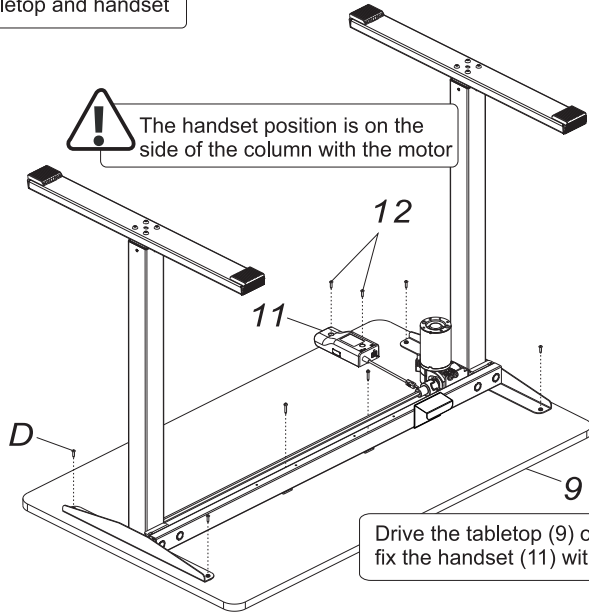
Fasten the narrow side of the adapter bracket (13) onto the crossbeam near the end of the motor

STEP6

Install the tabletop and handset



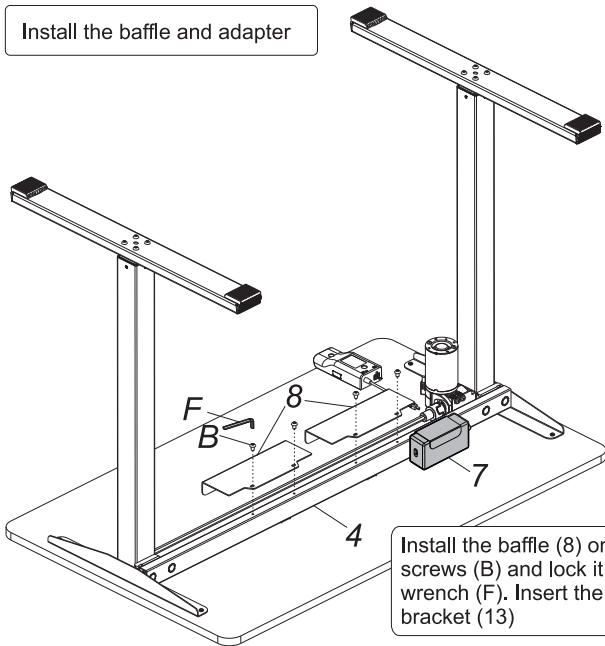
Self-prepared



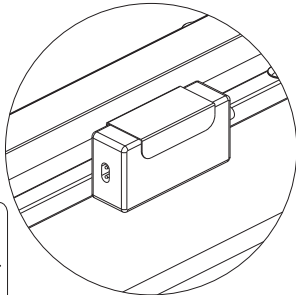
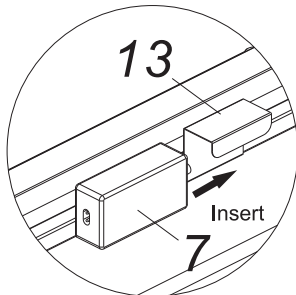
Drive the tabletop (9) onto the table frame with screws (D), fix the handset (11) with screws (12), and lock it tightly with a gun drill.

STEP7

Install the baffle and adapter

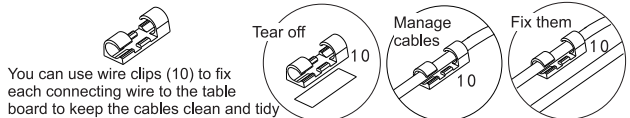
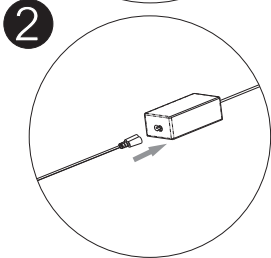
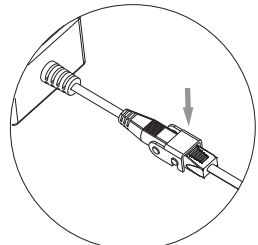
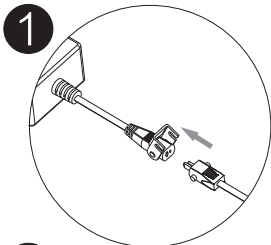
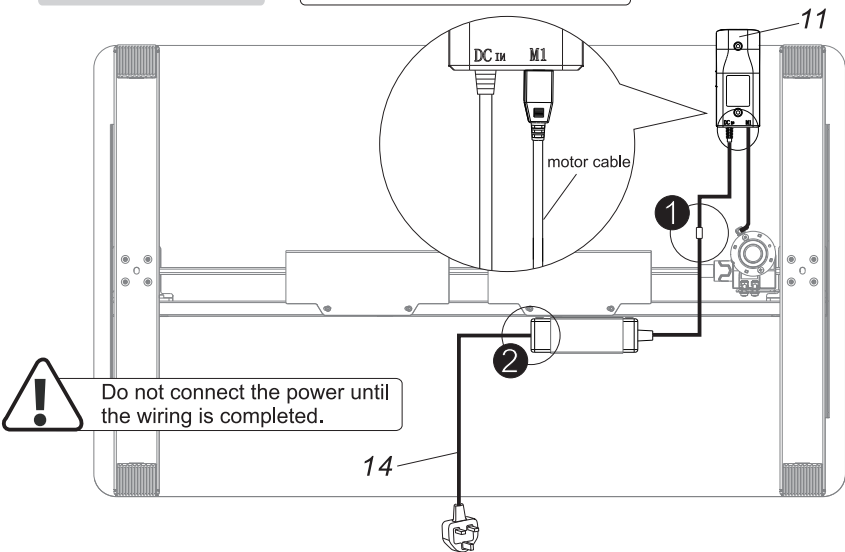


Install the baffle (8) onto the crossbeam (4) with screws (B) and lock it tightly with a 2.5x2.5 wrench (F). Insert the adapter (7) into the adapter bracket (13)



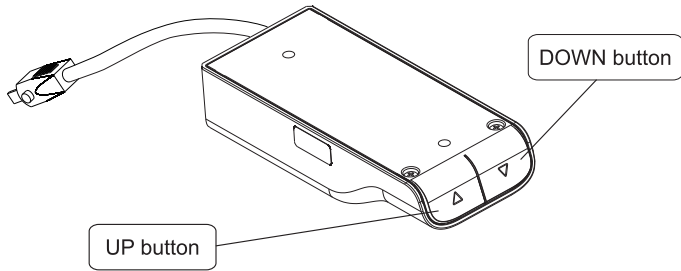
STEP8

Connect all cables to the handset



Button

How to use handset



●	"▲"	Adjust the desk upwards
●	"▼"	Adjust the desk downwards

Operation

- **Lifting Function:**
The height of the desk can be adjusted up or down by pressing "▲" or "▼" button.

- **Reset Function:**
 - At the lowest position, long press the down button for more than 5 seconds to enter the reset state, until the lifting system bottoms out and the rebound stops, the reset is successful.
 - When the lifting system fails, release the button and long press the down button until the lifting system bottoms out and rebounds and stops, and the reset is successful.

- **Troubleshooting:**
 - If there is no response to pressing the up or down button after a period of continuous work, please rest for more than 18 minutes before using it.
 - During the lifting process, if there is a retreat phenomenon, please check whether the desk load is too heavy and whether the desk shakes greatly.

Common fault treatment

The following tips will help you detected and eliminate the common fault and error. If the fault you met is not listed below, please contact with your supplier. Only the manufacturer and professionals are capable for investigating and correcting those fault and error.

Fault phenomenon	Method
The desktop could not function	Check if all the cables well connected;
Rising in a low speed	Check if overloaded, max loading: 60kg;
The desk moving downwards without any operation	
Automatically Self-Reset	Reset;
Go down but not go up or go up but not go down	
The upper and downward height is not enough	
The desk could not lifted	Restart after suspend for 18mins while connecting with power.
Overwork (Duty cycle: Max 2min on/18min OFF)	

Attention

- Power supply: AC100V-240V, 50/60Hz
- Service Environment: 0-40°C
- Unplug the power plug before cleaning, wipe the dust on surface with slight wet dishcloth when cleaning, be careful not to let the drops into the internal parts, not loose the connector.
- The electric box contains electronic components, metals, plastics, wires etc., so dispose of it in accordance with each country's environmental legislation, not the general household waste.
- Check carefully to ensure correct and complete assembly before using.
- Be familiar with all functions and program settings of the product before first use.
- Children are forbidden to play on the product because of unforeseen action when playing, so any dangerous consequences caused by this improper action will not be on manufacturers.
- Slight noise caused by the V-ribbed belt or brake system due to structure will not have any effect on the use of the equipment.
- Corrosive or abrasive materials are forbidden to clean the equipment. Must ensure that the cleaner used will not pollute the environment.
- This appliance can be used by children aged from 8 years and above and persons with reduced physical, sensory or mental capabilities or lack of experience and knowledge if they have been given supervision or instruction concerning use of the appliance in a safe way and understand the hazards involved. Children shall not play with the appliance.
- Cleaning and user maintenance shall not be made by children without supervision.
- If the supply cord is damaged, it must be replaced by the manufacturer, its service agent or a similarly qualified person in order to avoid a hazard.
- Please make sure there is no hazard sources in your operating environment. e.g., do not litter the tools around. Always be careful to treat the packaging materials in order to avoid any possible danger, e.g. plastic bag may lead to choking hazard to children.
- Keep the original package of the equipment if necessary in case of the future use in transportation.

Waste disposal



This marking indicates that this product should not be disposed with other household wastes. To prevent possible harm to the environment or human health from uncontrolled waste disposal, recycle it responsibly to promote the sustainable reuse of material resources. To return your used device, please use the return and collection systems or contact the retailer where the product was purchased. They can take this product for environmental safe recycling.

