

19" PANELS

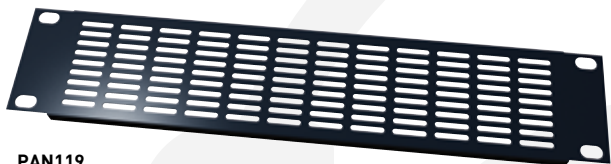
EMPTY PANELS



PAN119

Height	Part Nb
1 U	PAN119
2 U	PAN219
3 U	PAN319
4 U	PAN419

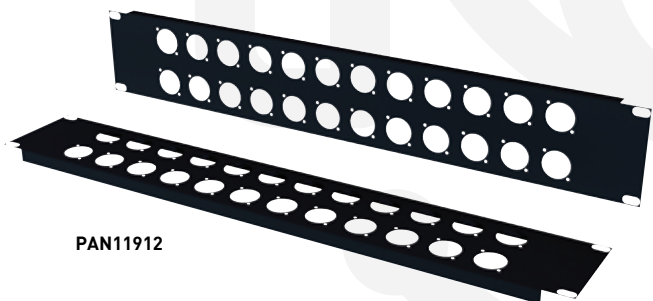
PANELS WITH VENTILATION



PAN119

Height	Part Nb
1 U	PAN1191V
2 U	PAN2192V
3 U	PAN3193V
4 U	PAN4194V

PANELS FOR D SERIES



PAN11912

Height	Number of holes	Part Nb
1 U	12	PAN11912
1 U	16	PAN11916
2 U	32	PAN21932

PANELS WITH BNC MOUNTING HOLES



PAN11916T

Height	Number of holes	Part Nb
1 U	16	PAN11916T
1 U	32	PAN11932T

PANELS FOR RECTANGULAR MULTI-PIN PLUGS



PAN219RP

Height	Number of holes	Part Nb
2 U	2 holes for rectangular plug 40 pins	PAN2192RP
2 U	2 holes for rectangular plug 108 pins	PAN219RG

19" PANELS

PANELS FOR ROUND MULTI-PIN PLUGS



PAN219CP

Height	Number of holes	Part Nb
2 U	2 holes for round multi-pin plug Ø 60 mm	PAN 2192CP
2 U	2 holes for round multi-pin plug Ø 71 mm	PAN219CG

REAR TIE BAR



PANPCA

Height	Part Nb
Rear tie bar – 95 mm	PANPCA

STAGE BOXES: CLASSIC MODELS



SB32

Number of holes D series	Type of output hole	Dimensions W x H x D	Part Nb
8	1 round hole	290 x 90 x 75	SB8
16	1 rectangular hole	290 x 105 x 75	SB16
24	1 rectangular hole	290 x 180 x 75	SB24
32	1 rectangular hole	290 x 265 x 75	SB32

STAGE BOXES: RACK BOXES



SB322R

Number of holes D series	Type of output hole	Number of units	Part Nb
32	2 round holes	5 U	SB322C
40	2 round holes	6 U	SB402C
48	4 round holes	8 U	SB484C

CHARACTERISTICS

- Stage box for rack mounting, fly cases.
- Removable handles
- Highly modular inputs.
- Supplied with set of blanking plates

Number of holes D series	Type of output hole	Number of units	Part Nb
32	2 rectangular holes	5 U	SB322R
40	2 rectangular holes	6 U	SB402R
48	4 rectangular holes	8 U	SB484R