

# The Next Generation of Panel Meters

Easy to Use. Easy to Read.



## Advanced Panel Meter (APM)

**Programmable dynamic backlight colour**

**Warning flash**

**40** segment curved bar graph display

**Models:**  
Voltage  
Frequency  
Current

**Combined digital and bar graph display**

**Programmable scale**

**Programmatic 4 digit star-burst display**

**Custom messages & annunciators**

**2** alarm set points

**WIDE viewing angle**

**USB 2.0**  
USB port for custom user settings

**16** Position switch for selecting standard configurations

**Full 4 digit readout for accuracy**

**PLC**

**2 outputs - digital and analogue**

**Less than 53mm deep**

### The innovative Advanced Panel Meter

The most visible, easy to use, multi-format, programmable panel meter on the market. The APM provides accurate measurement with an immediate visual indication of critical parameters. It has been designed for engineers who require a more effective way of monitoring and displaying data. The unique display combines traditional moving coil meters with the latest digital panel meters. Trumeter - Revolutionising the future of panel meters!

## Key Features

### Large multi-format display that incorporates:

- 40 segment bar graph display
- Large 4 digit display
- Separate Starburst display area for annunciators, custom messages and alarm information
- Dynamic backlight colour

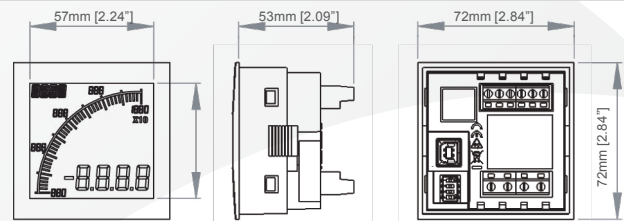
### Programmable:

- Scale (offset and gain) and Range (min and max)
- Custom annunciators
- User selectable backlight color and intensity
- Two independent alarm set-points
- Two independent outputs (output models only)
- 4-20mA analogue monitor output (output models only)

### Visibility:

- User adjustable backlight brightness and colour
- Large display
- Wide viewing angle (both horizontal and vertical)
- Custom annunciators

### Dimensions:

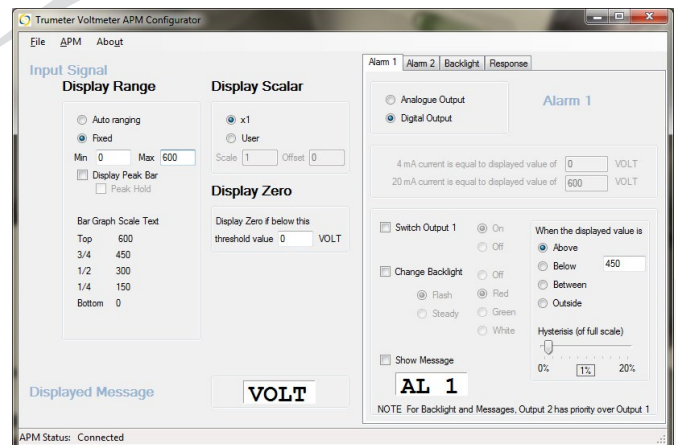


Panel cutout: 68mm x 68mm [2.68" x 2.68"] as per DIN43700/IEC61554

MEASUREMENT	VOLT	AMP	FREQUENCY
Input range (DC)	0 - 600V	0 - 5A	-
Max Using Shunt		1000A	
Input range (AC)	0 - 600V	0 - 5A	30 - 400Hz
Max Using CT		10,000A	
Accuracy	1%	1%	0.1%
Display modes		Peak or RMS	
<b>ENVIRONMENTAL</b>			
Temperature - operating		-10 to +60°C	
Temperature - storage		-40 to +70°C	
IP rating (from the front)		IP65	
<b>POWER SUPPLY</b>			
Nominal Input (AC or DC)		12-24 VAC/VDC	
<b>DISPLAY</b>			
Number of digits		4	
Digit height		12mm [0.47"]	
Digit height of annunciator		6mm [0.23"]	
Number of message characters		4	
Backlight colours		Red, Green, White	
LCD display		Positive or Negative	
<b>OUTPUT MODELS</b>			
Max voltage		34V	
Max current		500mA	
Analogue output		4-20mA	
<b>CERTIFICATION</b>			
		UL and cUL, CE	

## Easy To Use Software

Just plug into any USB port on your PC, run the freely available APM Configurator application and you're off. No drivers required.



### Part Numbers: (POS LCD = Positive LCD; NEG LCD = Negative LCD)

Volt	Description	Amp	Description	Frequency	Description
APM-VOLT-APN	APM VOLT METER, POS LCD	APM-AMP-APN	APM AMMETER, POS LCD	APM-FREQ-APN	APM FREQ METER, POS LCD
APM-VOLT-APO	APM VOLT METER, POS LCD WITH OUTPUTS	APM-AMP-APO	APM AMMETER, POS LCD WITH OUTPUTS	APM-FREQ-APO	APM FREQ METER, POS LCD WITH OUTPUTS
APM-VOLT-ANN	APM VOLT METER, NEG LCD	APM-AMP-ANN	APM AMMETER, NEG LCD	APM-FREQ-ANN	APM FREQ METER, NEG LCD
APM-VOLT-ANO	APM VOLT METER, NEG LCD WITH OUTPUTS	APM-AMP-ANO	APM AMMETER, NEG LCD WITH OUTPUTS	APM-FREQ-ANO	APM FREQ METER, NEG LCD WITH OUTPUTS
022128-01	USB Cable				

Full specifications available online [www.truAPM.com](http://www.truAPM.com)

