

DO NOT SCALE DRAWING DIMENSION IN METRIC

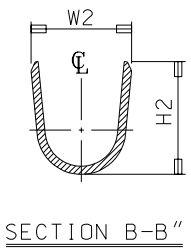
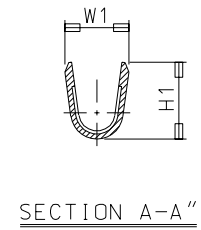
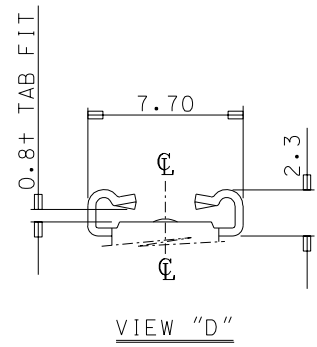
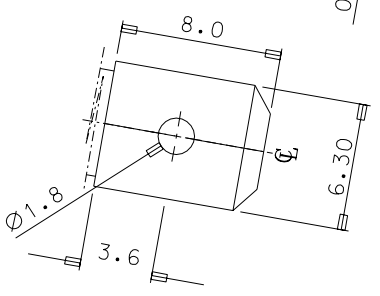
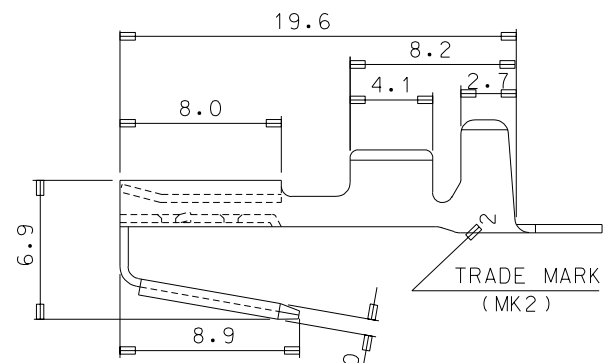
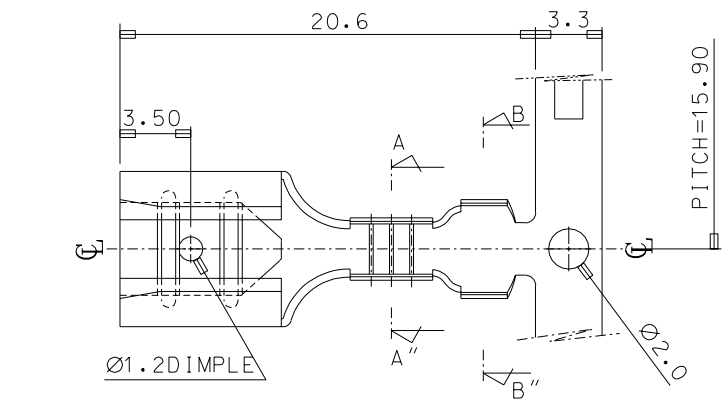
DWG. NO. SD 35725-*910

SIMILAR ITEM

PROJECT NO.

C

B



NOTES

1. MATERIAL : BRASS 0.40±0.03 THK'
2. FINISH : POST-TIN PLATING
3. RECOMMENDED LENGTH OF WIRE STRIP IS 5.3-5.8

MATERIAL NO.	PART NO.	W1	H1	W2	H2	WIRE	INSUL.DIA.
357253910	35725-3910	3.1	3.8	4.9	5.6	AWG# 18-14	MAX.Ø3.6
357254910	35725-4910			6.5	6.35		
357255910	35725-5910	4.0	4.2			AWG#12	MAX.Ø4.6

REVISED	EC NO. KDR2003-0216 DRAWN: W.Y. YANG 03/02/22 CHK: W.Y. YANG APPR: C.W. LEE	DESCRIPTION	QUALITY SYMBOLS	GENERAL TOLERANCES: (UNLESS SPECIFIED)	SCALE 4:1	DESIGN UNITS <input checked="" type="checkbox"/> mm <input type="checkbox"/> INCH	<input checked="" type="checkbox"/> THIRD ANGLE PROJECTION	DIMENSIONS: <input type="checkbox"/> mm <input type="checkbox"/> INCH <input checked="" type="checkbox"/> mm ONLY	SHT	REV
			MAJOR = 0 CRITICAL = 0	mm INCH	DRAWN BY & DATE W.Y. YANG 93/06/26	TITLE: .250 PIGGY BACK				
B	REV		4 PLACES ±	±	CHECKED BY & DATE B.K. CHOI 93/06/26	MOLEX MOLEX INCORPORATED				
			3 PLACES ±	±						APPROVED BY & DATE C.W. LEE 93/06/26
			2 PLACES ±0.30	±	CAD FILENAME S7255910.DGN	MATERIAL NO. SEE TABLE	MATERIAL NO. SD-35725-*910	SHEET NO. 1 OF 1		
			1 PLACE ±0.20	±	THIS DRAWING CONTAINS INFORMATION THAT IS PROPRIETARY TO MOLEX INCORPORATED AND SHOULD NOT BE USED WITHOUT WRITTEN PERMISSION.				SIZE B	