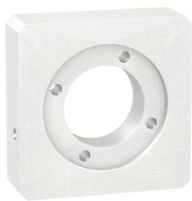


Product datasheet

Specifications



adaptation kit for motor/gear-box combination

GBK0600573S

EAN Code: 3606480397752

Main

Range compatibility	Lexium SD3 Lexium ILS
Product or component type	Adaptation kit
Device short name	GBK
Accessory / separate part category	Adaptation accessory
Product compatibility	BRS3 ILS
Accessory / separate part destination	For assembly motor and gearbox
Kit composition	A shaft end adaptor An adaptor plate Screws and bolts for mounting
Gearbox external diameter	60 mm

Complementary

Motor flange size	57 mm
Number of motor stacks	2 3 1
Length	19.1 mm
Net weight	0.2 kg

Packing Units

Unit Type of Package 1	PCE
Number of Units in Package 1	1
Package 1 Height	8.000 cm
Package 1 Width	16.200 cm
Package 1 Length	17.800 cm
Package 1 Weight	218.000 g
Unit Type of Package 2	P06
Number of Units in Package 2	50
Package 2 Height	75.000 cm
Package 2 Width	60.000 cm
Package 2 Length	80.000 cm
Package 2 Weight	23.900 kg

Disclaimer: This documentation is not intended as a substitute for and is not to be used for determining suitability or reliability of these products for specific user applications

Logistical informations

Country of origin	DE
-------------------	----

Contractual warranty

Warranty	18 months
----------	-----------

Environmental Data

Schneider Electric aims to achieve Net Zero status by 2050 through supply chain partnerships, lower impact materials, and circularity via our ongoing “Use Better, Use Longer, Use Again” campaign to extend product lifetimes and recyclability.

[Environmental Data explained >](#)

[How we assess product sustainability >](#)

Environmental footprint	
Environmental Disclosure	Product Environmental Profile

Use Better

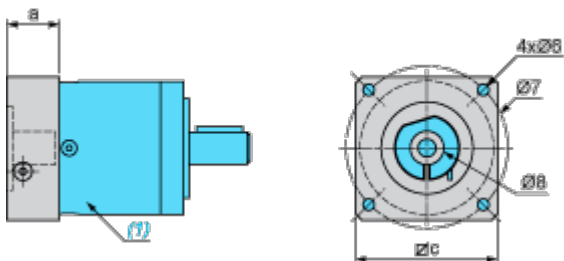
Materials and Substances	
Packaging made with recycled cardboard	No
Packaging without single use plastic	No
EU RoHS Directive	Pro-active compliance (Product out of EU RoHS legal scope)
SCIP Number	7c9e597c-8ccc-4daf-95fb-5d67fc70d561
REACH Regulation	REACH Declaration
PVC free	Yes

Use Again

Repack and remanufacture	
Circularity Profile	No need of specific recycling operations
Take-back	No

Dimensions Drawings

Dimensions



- (1) Gearbox
- Ø8 shaft end adaptor in case motor shaft diameter is smaller than gearbox input coupling diameter

Values in mm

a	c	Ø6	Ø7	Ø8 (outer diameter x inner diameter x length)
19.1	60	M5	66.7	14 x 8 x 20

Values in in.

a	c	Ø6	Ø7	Ø8 (outer diameter x inner diameter x length)
0.75	2.36	M5	2.63	0.55 x 0.31 x 0.79