

ESB32 Middle Current Push Switches

Type: **ESB32(H=12.8 mm)**



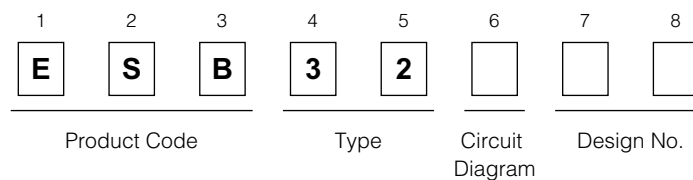
■ Features

- Long travel
- Can be fitted to a printed circuit board.

■ Recommended Applications

- Operatoin switches for automobiles (overdrive, hazard and map lamp switches etc.)
- Used for detecting function in relay and solenoid controls
- Secondary power switches for consumer electronic equipment

■ Explanation of Part Numbers



- 1: Lever height=25.0 mm, N.O.
- 2: Lever height=25.0 mm, N.C.
- 3: Lever height=23.0 mm, N.O.
- 4: Lever height=23.0 mm, N.C.

■ Specifications

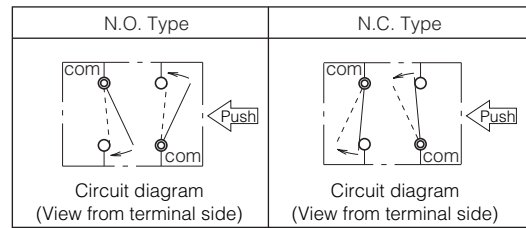
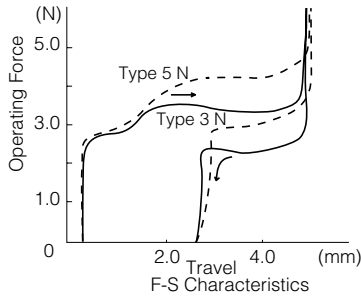
Rating	0.1 A 12 Vdc to 3 A 12 Vdc (Resistive load)
Travel	Lock Travel: 2.45 mm, Full Travel: 4.5 mm Lock Travel: 2.8 mm, Full Travel: 4.5 mm
Mounting Height	12.8 mm
Poles and Throws	2-poles 1-throw (N.O. type or N.C. type)
Operating Mode	Self-lock, Non-lock
Operating Force	5.0 N±3.0 N, 3.5 N±1.5 N
Minimum Quantity/Packing Unit	50 pcs. Polyethylene Bag (Bulk)
Quantity/Carton	1000 pcs.

Design and specifications are each subject to change without notice. Ask factory for the current technical specifications before purchase and/or use. Should a safety concern arise regarding this product, please be sure to contact us immediately.

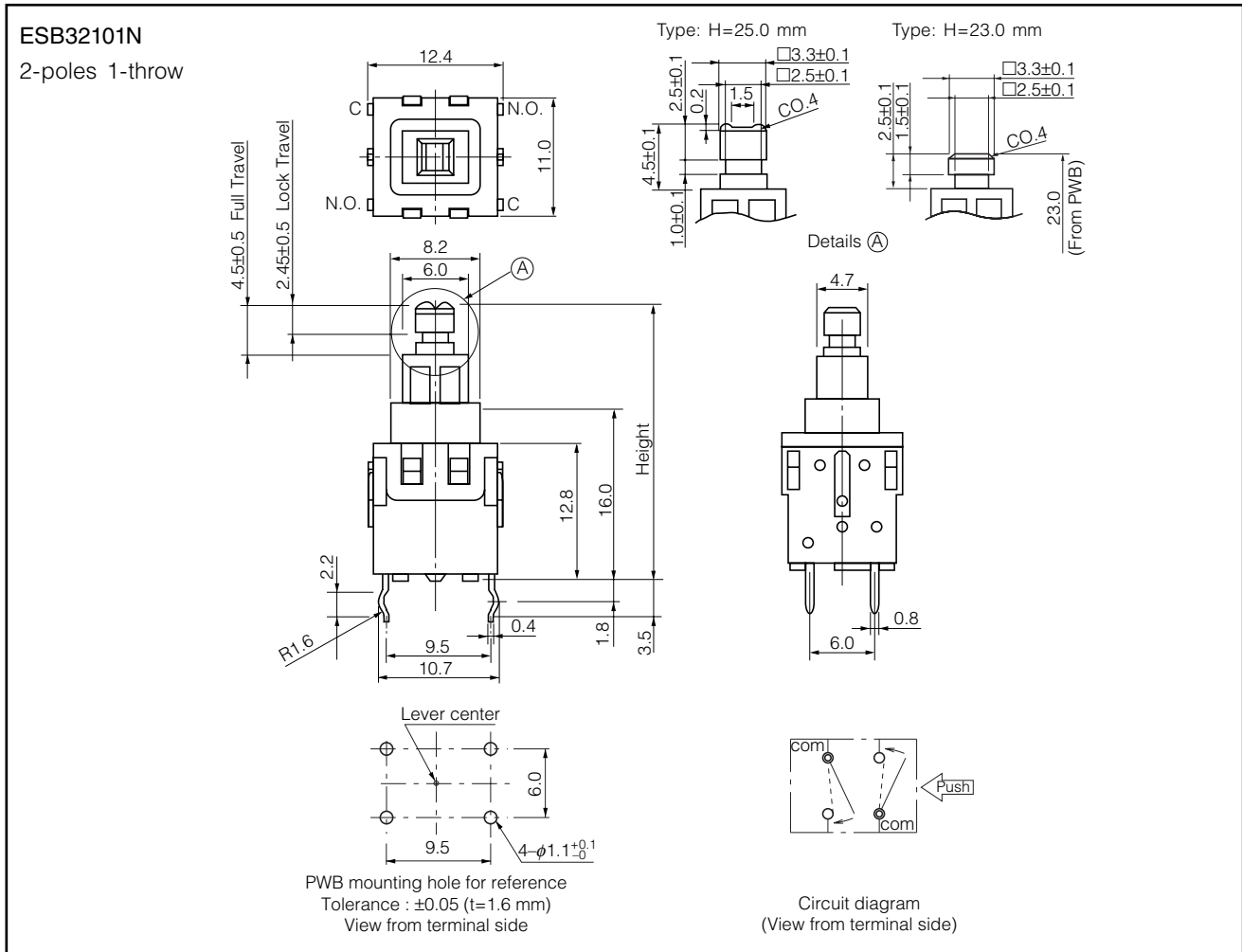
Standard Products

Lever Height	Circuit Diagram	Operating Force	Formed Terminals	
			PP	NL
25.0 mm	N.O.	3.5 N	ESB32101N	ESB32132
		5.0 N	ESB32151	ESB32152
	N.C.	3.5 N	ESB32231	ESB32232
		5.0 N	ESB32251	-
23.0 mm	N.O.	3.5 N	ESB32331	ESB32332
		5.0 N	ESB32351	-
	N.C.	3.5 N	ESB32431	-
		5.0 N	-	-

Note: PP=Self-lock, NL=Non-lock



Dimensions in mm (not to scale)



Application Notes:

- Operating force should be applied at the center of the lever.

Design and specifications are each subject to change without notice. Ask factory for the current technical specifications before purchase and/or use. Should a safety concern arise regarding this product, please be sure to contact us immediately.