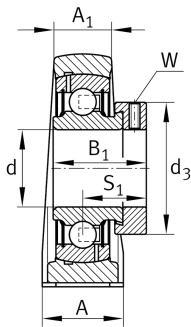
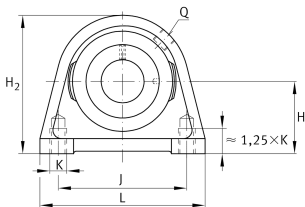
**PSHE60-XL-N**

## Plummer block housing unit

Plummer block housing units PSHE, cast iron housing, radial insert ball bearing with eccentric locking collar, P seals

**X-life**

## Technical information



## Your current product variant

Groove	N	Cast iron housing with undercut slot for end caps
Material	GG	Grey cast iron

## Main Dimensions &amp; Performance Data

d	60 mm	Bore diameter
L	150 mm	Length total
H 2	140 mm	Height
≈m	3.81 kg	Weight

## Mounting dimensions

J	118 mm	Distance fixing bore
K	M16	Thread fixing bore

## Dimensions

H	69.9 mm	Distance shaft axis
A	60 mm	Width (base)
A 1	42 mm	Width (head)
Q	M6	Connection thread for lubrication
B 1	53.1 mm	Locking collar total width
S 1	39.6 mm	Distance of raceway to locking collar



Additional information

SHE12	Housing
GRAE60-XL-NPP-B	Bearing designation
KASK12	Protecting cap

Temperature range

T <sub>min</sub>	-20 °C	Operating temperature min.
T <sub>max</sub>	120 °C	Operating temperature max.