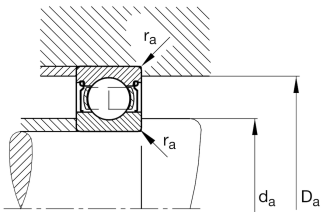
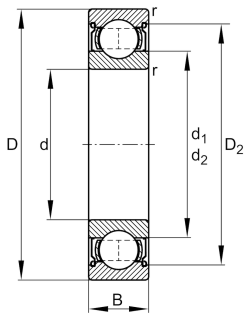


**FAG****6214-Z**

Deep groove ball bearing

Deep groove ball bearing 62...-Z, single row,
shield , steel sheet metal cage

Technical information



Your current product variant

Sealing	Z	Non-contact shield on one Side
Cage	JN	Steel sheet metal
Tolerance class	PN	Normal (PN)
Dimensional / heat stabilization	S0	Rings dimensional stabilized up to 150°
Lubricant	Without	Bearing not greased
Radial internal clearance	CN (Group N)	Normal internal clearance
Bore type	Z	Cylindrical

Main Dimensions & Performance Data

d	70 mm	Bore diameter
D	125 mm	Outside diameter
B	24 mm	Width
C _r	66,000 N	Basic dynamic load rating, radial
C _{0r}	44,000 N	Basic static load rating, radial
C _{ur}	3,000 N	Fatigue load limit, radial
n _G	8,200 1/min	Limiting speed
n _{gr}	6,100 1/min	Reference speed
≈m	1.11 kg	Weight



Mounting dimensions

$d_{a\ min}$	79 mm	Minimum diameter shaft shoulder
$D_{a\ max}$	116 mm	Maximum diameter of housing shoulder
$r_{a\ max}$	1.5 mm	Maximum fillet radius

Dimensions

$r_{\ min}$	1.5 mm	Minimum chamfer dimension
D_1	108.21 mm	Shoulder diameter outer ring
D_2	110.72 mm	Caliber diameter outer ring
d_1	86.75 mm	Shoulder diameter inner ring

Temperature range

$T_{\ min}$	-30 °C	Operating temperature min.
$T_{\ max}$	150 °C	Operating temperature max.

Calculation factors

f_0	14.4	Calculation factor
-------	------	--------------------

Characteristics

	Radial load
	Axial load in one direction
	Axial load in two directions
	Grease Lubrication
	Oil Lubrication
	Sealed on one side