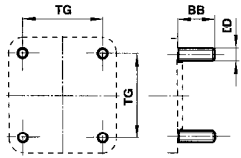




ISO/VDMA Cylinder mountings

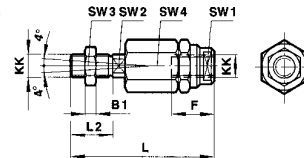
For PRA/181000,.../M; PRA/182000,.../M; PRA/183000,.../M
 RA/28000,.../M; RA/28300,.../M; RA/8000,.../M; KA/8000,.../M
 RM/191000,.../M; RM/192000,.../M; RM/193000,.../M, PVA/8000/M

Front or rear stud – A
 ISO 6431



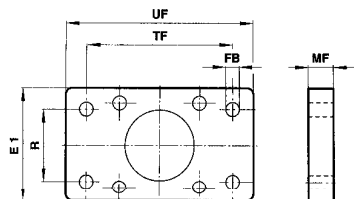
Ø	BB	DD	TG	kg
32	17	M6	32,5	0,02
40	17	M6	38	0,02
50	23	M8	46,5	0,05
63	23	M8	56,5	0,05
80	28	M10	72	0,08
100	28	M10	89	0,08
125	34	M12	110	0,14
160	42	M16	140	0,31
200	42	M16	175	0,31
250	50	M20	220	0,92
320	60	M24	270	1,46

Piston rod swivel – AK



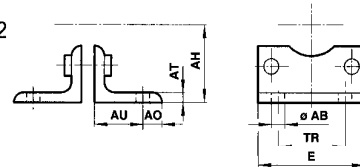
Thread KK	B1	F	L	L2	SW1	SW2	SW3	SW4	kg
M10x1,25	5	26	73	20	19	12	17	30	0,20
M12x1,25	6	26	77	24	19	12	19	30	0,20
M16x1,5	8	34	106	32	30	19	24	42	0,65
M20x1,5	10	42	122	40	30	19	30	42	0,72
M27x2	13,5	40	147	54	40	24	41	55	1,70
M36x2	18	78	251	72	50	36	55	75	5,40

Rear flange – B
 Front flange – G
 ISO 6431 and
 VDMA 24562 Part 2



Ø	E1	Ø FB	MF	R	TF	UF	kg
20	36	6,6	10	0	55	70	0,16
25	40	6,6	10	0	60	76	0,20
32	50	7	10	32	64	80	0,25
40	55	9	10	36	72	90	0,35
50	65	9	12	45	90	110	0,70
63	75	9	12	50	100	125	0,80
80	100	12	16	63	126	154	1,35
100	120	14	16	75	150	186	2,20
125	140	16	20	90	180	224	1,70
160	180	18	20	115	230	280	3,10
200	220	22	25	135	270	320	4,60
250	280	26	25	166	330	396	7,40
320	350	33	30	200	400	475	13,6

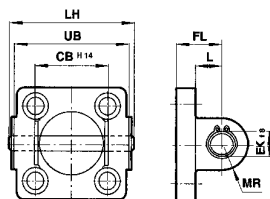
Foot – C
 ISO 6431 and
 VDMA 24562 Part 2



Ø	Ø AB	AH	AO	AT	AU	E	TR	kg
20	6,6	27	6	4	16	36	22	0,03
25	6,6	30	7	4	16	40	26	0,04
32	7	32	8 (11)	4	24	48	32	0,15
40	9	36	9 (12)	4 (5)	28	53	36	0,18
50	9	45	10 (13)	5	32	64	45	0,30
63	9	50	12 (13)	5	32	74	50	0,39
80	12	63	19	5 (6)	41	98	63	0,80
100	14	71	19	5 (6)	41	115	75	0,95
125	16	90	20 (25)	9 (7)	45	140	90	2,40
160	18	115	20	8	60	180	115	3,50
200	22	135	30	9	70	220	135	5,25
250	26	165	35	10	75	280	165	9,50
320	33	200	45	16	85	350	200	22,0

() stainless steel, weight on request

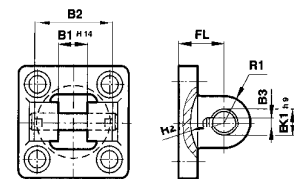
Rear clevis – D
 ISO 6431 and
 VDMA 24562 Part 2



Ø	CB H14	Ø EK R8	FL	L	LH	MR	UB	kg
32	26	10	22	13	52	9	45	0,11
40	28	12	25	16	60	12	52	0,16
50	32	12	27	17	68	12	60	0,22
63	40	16	32	22	79	15	70	0,34
80	50	16	36	22	99	15	90	0,54
100	60	20	41	27	119	20	110	0,90
125	70	25	50	31	139 (140)	25	130	2,70
160	90	30	55	35,5	181	30	170	4,30
200	90	30	60	36	181	30	170	6,10
250	110	40	70	45	218	40	200	1,90
320	120	45	80	50	238	45	220	30,5

() Stainless steel, weight on request

Rear clevis – D2
 VDMA 24562 Part 2



Ø	B1 H14	B2	B3	Ø EK R8	FL	R1	R2	kg
32	14	34	3,3	10	22	11	17	0,20
40	16	40	4,3	12	25	12	20	0,23
50	21	45	4,3	16	27	14,5	22	0,36
63	21	51	4,3	16	32	18	25	0,55
80	25	65	4,3	20	36	22	30	0,90
100	25	75	6,3	20	41	22	32	1,45
125	37	97	6,3	30	50	30	42	2,70
160	43	122	6,3	35	55	36	46	4,30
200	43	122	6,3	35	60	38	49	6,10