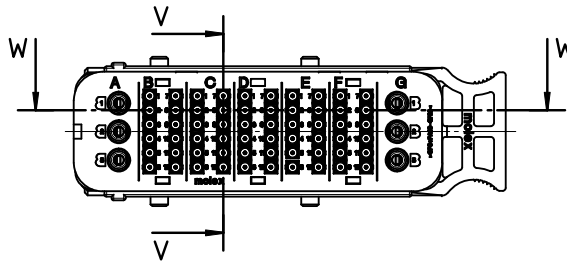
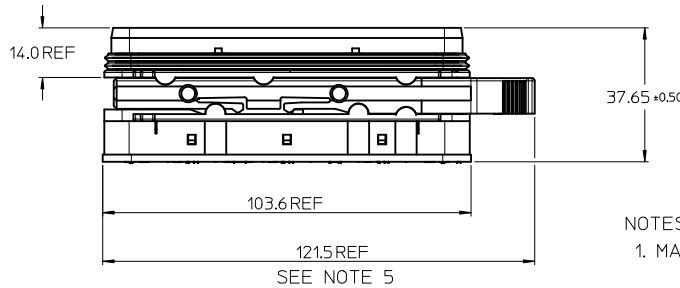
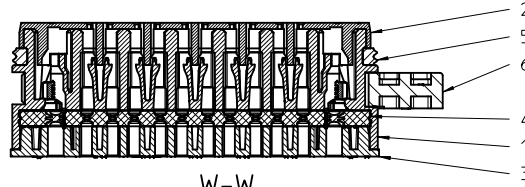
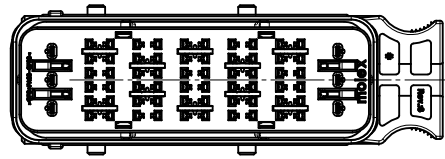
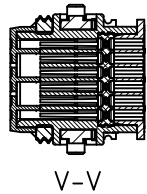
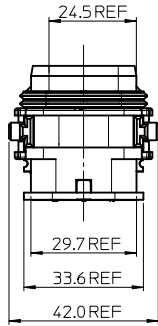
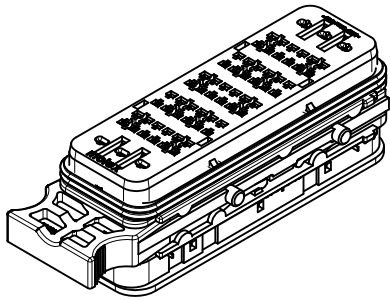
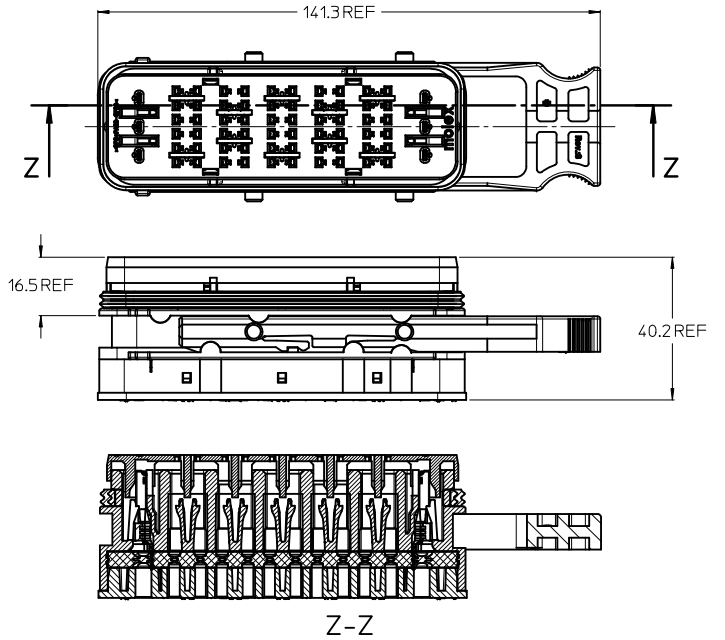


TPA IN FULL-LOCK (AS SHIPPED) POSITION
AND LATCH IN CLOSED POSITION



TPA IN PRE-LOAD POSITION
AND LATCH IN OPEN POSITION



NOTES:

- MATERIALS: HOUSINGS: POLYSTYRENE/NYLON BLEND, GLASS FILLED, UL 94 HB
SEALS: LIQUID SILICONE POLYMER
- MX150 RECEPTACLE TERMINAL PER SD-33012-001 TO BE USED WITH THIS ASSEMBLY IN CAVITIES B, C, D, E AND F
CRIMPED WITH CABLE INSULATION OUTER DIAMETER IN THE RANGE 1.5mm TO 2.69mm
- MX150L RECEPTACLE TERMINAL PER SD-19434-002 TO BE USED WITH THIS ASSEMBLY IN CAVITIES A AND G
CRIMPED WITH CABLE INSULATION OUTER DIAMETER IN THE RANGE 3.61mm TO 5.54mm
- PRODUCT SPECIFICATION: PS-85083-001
- PACKAGING SPECIFICATION: PK-85070-001, LATCH SHIPPED IN PARTIALLY OPEN POSITION
- MATES WITH: SRC 60+6AG POWER BLADE HOUSING ASSEMBLY PER SD-85083-300
- APPLICATION SPECIFICATION: AS-85083-001
- CONDUIT INTERFACE OPTIONS: REFER TO SD-93286-001

No.	DESCRIPTION	QTY.	COLOUR
6	SLIDING LATCH	1	BLACK
5	FEMALE FRONT SEAL	1	RED
4	FEMALE BACK SEAL	1	BLUE
3	FEMALE REAR COVER	1	BLACK
2	FEMALE FRONT COVER	1	GREEN
1	FEMALE HOUSING	1	BLACK
No.	DESCRIPTION	QTY.	COLOUR

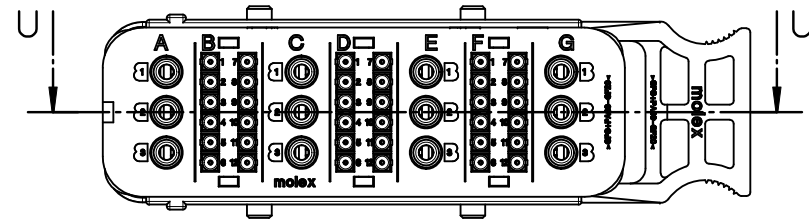
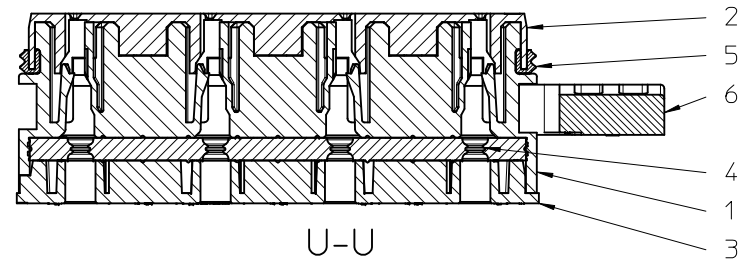
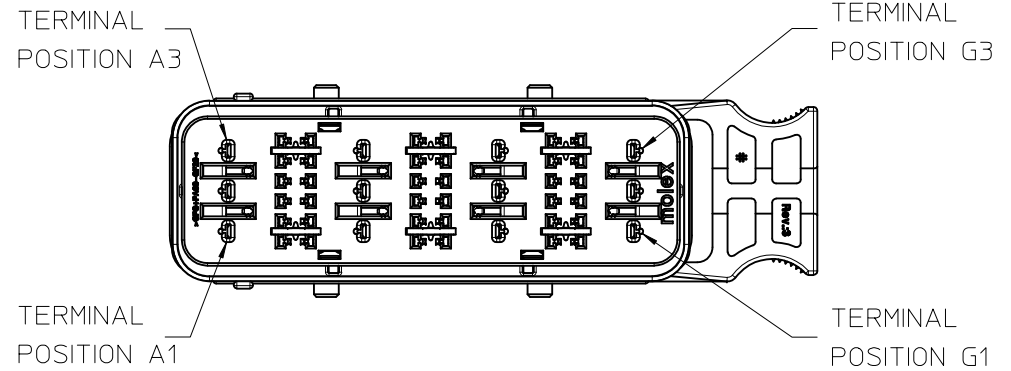
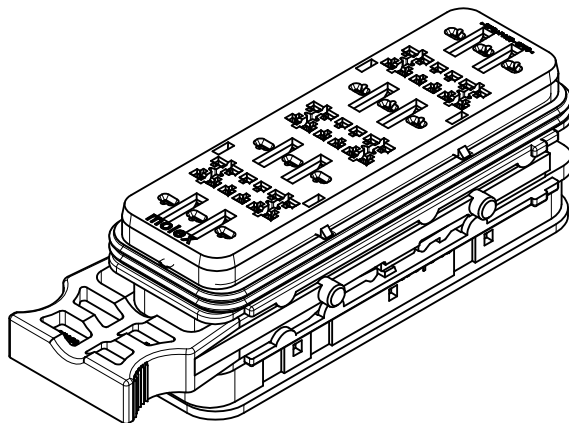
BILL OF MATERIAL

REV	DESCRIPTION	QUALITY SYMBOLS	GENERAL TOLERANCES (UNLESS SPECIFIED)		DIMENSION STYLE		SCALE	DESIGN UNITS	THIRD ANGLE PROJECTION
			mm	INCH	MM ONLY	TITLE			
1	ADD POWER OPTION	▽=0	4 PLACES ± 0.20	± 0.008	DRAWN BY	DATE	1:1	METRIC	SRC MIXED POWER FEMALE RECEPTACLE HOUSING ASSEMBLY
2	EC NO: WEU2012-0136	▽=0	3 PLACES ± 0.25	± 0.010	TVOGT	2009/03/26			
3	DRWN: JOCANNOR 2011/10/24		2 PLACES ± 0.20	± 0.008	CHECKED BY	DATE			MATERIAL NO. 850840700 DOCUMENT NO. SD-85084-700 SHEET NO. 1 OF 4
4	CHKD: WALLACE 2012/02/10		1 PLACE ± 0.5	± 0.020	RSILLER	2009/03/30			
5	APPR: EEOLOAN 2012/02/22		ANGULAR ± .5°		APPROVED BY	DATE			
					AVOGT	2009/03/31			
					THIS DRAWING CONTAINS INFORMATION THAT IS PROPRIETARY TO MOLEX INCORPORATED AND SHOULD NOT BE USED WITHOUT WRITTEN PERMISSION				

NOTES:

1. SEE SHEET 1 FOR UNSPECIFIED NOTES AND DIMENSIONS
2. MX150 RECEPTACLE TERMINAL PER SD-33012-001 TO BE USED WITH THIS ASSEMBLY IN CAVITIES B, D AND F CRIMPED WITH CABLE INSULATION OUTER DIAMETER IN THE RANGE 1.5mm TO 2.69mm
3. MX150L RECEPTACLE TERMINAL PER SD-19434-002 TO BE USED WITH THIS ASSEMBLY IN CAVITIES A, C, E AND G CRIMPED WITH CABLE INSULATION OUTER DIAMETER IN THE RANGE 3.61mm TO 5.54mm
4. MATES WITH: SRC 36+12ACEG POWER BLADE HOUSING ASSEMBLY (PART NUMBER 850833612) PER SD-85083-300

6	SLIDING LATCH	1	BLACK
5	FEMALE FRONT SEAL	1	RED
4	FEMALE BACK SEAL	1	BLUE
3	FEMALE REAR COVER	1	BLACK
2	FEMALE FRONT COVER	1	GREEN
1	FEMALE HOUSING	1	BLACK
No.	DESCRIPTION	QTY.	COLOUR
BILL OF MATERIAL			



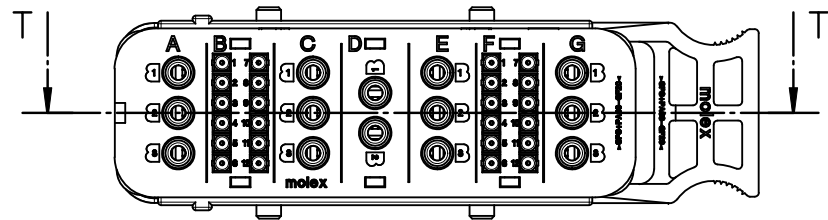
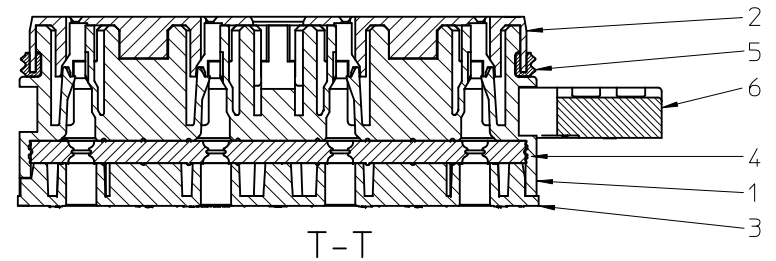
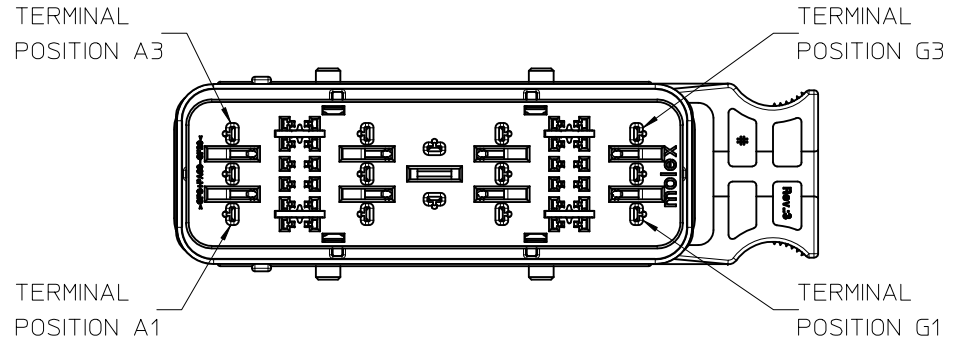
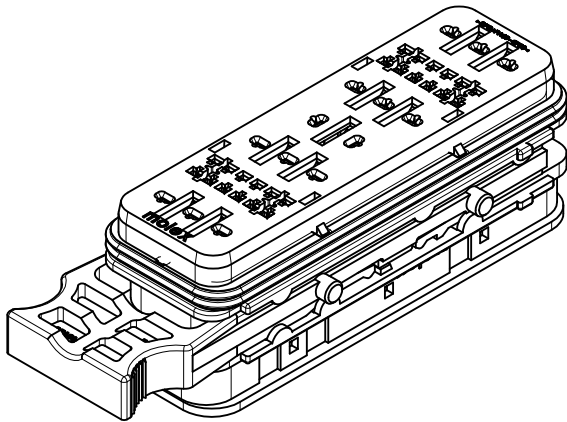
SEE SHEET ONE EC NO: WEU2012-0136 DRWN: JOCONNOR 2011/10/24 CHKD: J WALLACE 2012/02/10 APPR: EFOLAN 2012/02/22	REV DESCRIPTION	QUALITY SYMBOLS	GENERAL TOLERANCES (UNLESS SPECIFIED)		DIMENSION STYLE MM ONLY		SCALE 1:1	DESIGN UNITS METRIC	THIRD ANGLE PROJECTION	
		▽=0 ∇=0	mm	INCH	DRAWN BY TVOGT	DATE 2009/03/26	TITLE SRC MIXED POWER FEMALE RECEPTACLE HOUSING ASSEMBLY			
			4 PLACES ± --- ± ---	3 PLACES ± --- ± ---	CHECKED BY RSILLER	DATE 2009/03/30	MOLEX MOLEX INCORPORATED			
			2 PLACES ± 0.20 ± ---	1 PLACE ± 0.5 ± ---	APPROVED BY AVOGT	DATE 2009/03/31	MATERIAL NO. 850843612		DOCUMENT NO. SD-85084-700	SHEET NO. 2 OF 4
DRAFT WHERE APPLICABLE MUST REMAIN WITHIN DIMENSIONS			ANGULAR ± .5 °		THIS DRAWING CONTAINS INFORMATION THAT IS PROPRIETARY TO MOLEX INCORPORATED AND SHOULD NOT BE USED WITHOUT WRITTEN PERMISSION					

10 9 8 7 6 5 4 3 2 1

NOTES:

1. SEE SHEET 1 FOR UNSPECIFIED NOTES AND DIMENSIONS
2. MX150 RECEPTACLE TERMINAL PER SD-33012-001 TO BE USED WITH THIS ASSEMBLY IN CAVITIES B AND F CRIMPED WITH CABLE INSULATION OUTER DIAMETER IN THE RANGE 1.5mm TO 2.69mm
3. MX150L RECEPTACLE TERMINAL PER SD-19434-002 TO BE USED WITH THIS ASSEMBLY IN CAVITIES A, C, D, E AND G CRIMPED WITH CABLE INSULATION OUTER DIAMETER IN THE RANGE 3.61mm TO 5.54mm
4. MATES WITH: SRC 24+14ACDEG POWER BLADE HOUSING ASSEMBLY (PART NUMBER 850832414) PER SD-85083-300

6	SLIDING LATCH	1	BLACK
5	FEMALE FRONT SEAL	1	RED
4	FEMALE BACK SEAL	1	BLUE
3	FEMALE REAR COVER	1	BLACK
2	FEMALE FRONT COVER	1	GREEN
1	FEMALE HOUSING	1	BLACK
No.	DESCRIPTION	QTY.	COLOUR
BILL OF MATERIAL			

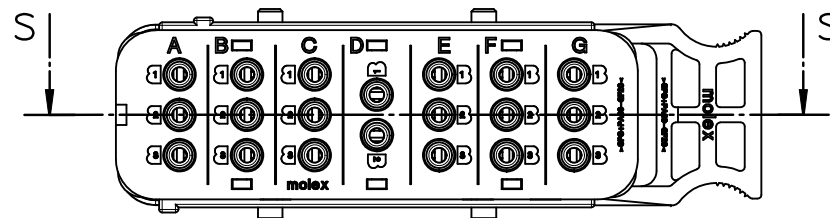
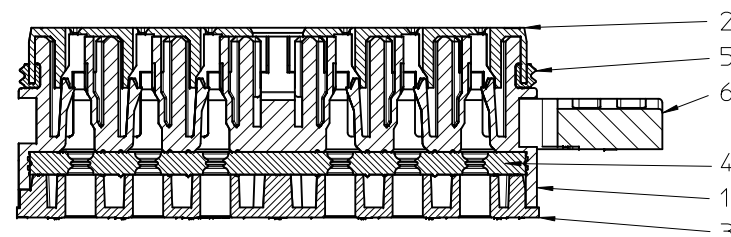
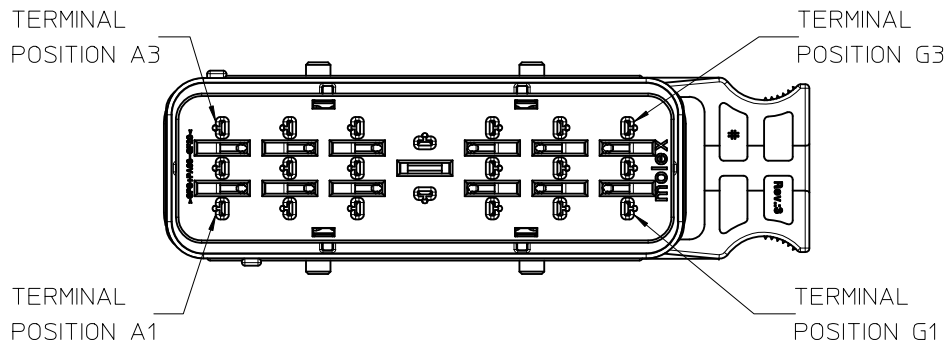


SEE SHEET ONE EC NO: WEU2012-0136 DRWN: JOCANNON 2011/10/24 CHKD: JWALLACE 2012/02/10 APPR: EFOLAN 2012/02/22	DESCRIPTION REV	QUALITY SYMBOLS ▽=0 ◻=0	GENERAL TOLERANCES (UNLESS SPECIFIED)		DIMENSION STYLE MM ONLY		SCALE 1:1	DESIGN UNITS METRIC	THIRD ANGLE PROJECTION	
			mm	INCH	DRAWN BY TVOGT	DATE 2009/03/26	TITLE SRC MIXED POWER FEMALE RECEPTACLE HOUSING ASSEMBLY			
			4 PLACES ± --- ± ---	3 PLACES ± --- ± ---	CHECKED BY RSILLER	DATE 2009/03/30	MOLEX INCORPORATED			
			2 PLACES ± 0.20 ± ---	1 PLACE ± 0.5 ± ---	APPROVED BY AVOGT	DATE 2009/03/31	DOCUMENT NO. SD-85084-700		SHEET NO. 3 OF 4	
		ANGULAR ± .5 °		MATERIAL NO. 850842414		THIS DRAWING CONTAINS INFORMATION THAT IS PROPRIETARY TO MOLEX INCORPORATED AND SHOULD NOT BE USED WITHOUT WRITTEN PERMISSION				
		DRAFT WHERE APPLICABLE MUST REMAIN WITHIN DIMENSIONS		SIZE A3						

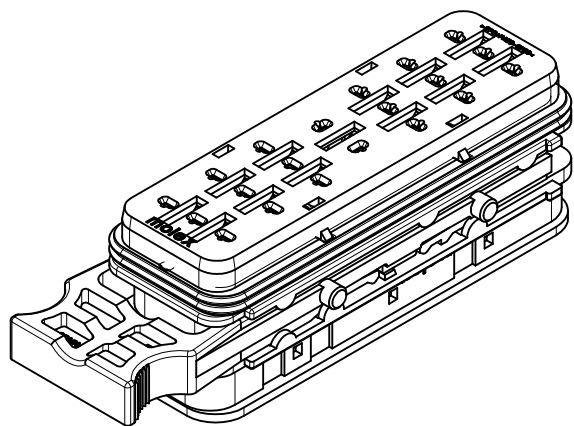
9 8 7 6 5 4 3 2 1

NOTES:

1. SEE SHEET 1 FOR UNSPECIFIED NOTES AND DIMENSIONS
2. MX150L RECEPTACLE TERMINAL PER SD-19434-002 TO BE USED WITH THIS ASSEMBLY IN ALL CAVITIES CRIMPED WITH CABLE INSULATION OUTER DIAMETER IN THE RANGE 3.61mm TO 5.54mm
3. MATES WITH: SRC 0+20ABCDEF G POWER BLADE HOUSING ASSEMBLY (PART NUMBER 850830020) PER SD-85083-300



6	SLIDING LATCH	1	BLACK
5	FEMALE FRONT SEAL	1	RED
4	FEMALE BACK SEAL	1	BLUE
3	FEMALE REAR COVER	1	BLACK
2	FEMALE FRONT COVER	1	GREEN
1	FEMALE HOUSING	1	BLACK
No.	DESCRIPTION	QTY.	COLOUR
BILL OF MATERIAL			



SEE SHEET ONE EC NO: WEU2012-0136 DRWN: JOCANNOR 2011/10/24 CHKD: J WALLACE 2012/02/10 APPR: EFOLAN 2012/02/22	DESCRIPTION REV	QUALITY SYMBOLS	GENERAL TOLERANCES (UNLESS SPECIFIED)	DIMENSION STYLE	SCALE	DESIGN UNITS	THIRD ANGLE PROJECTION
		$\nabla = 0$ $\nabla C = 0$	mm INCH 4 PLACES ± --- ± --- 3 PLACES ± --- ± --- 2 PLACES ± 0.20 ± --- 1 PLACE ± 0.5 ± --- ANGULAR ± .5 °	MM ONLY DRAWN BY: TVOGT DATE: 2009/03/26 CHECKED BY: RSILLER DATE: 2009/03/30 APPROVED BY: AVOGT DATE: 2009/03/31	1:1	METRIC	TITLE SRC MIXED POWER FEMALE RECEPTACLE HOUSING ASSEMBLY
		DRAFT WHERE APPLICABLE MUST REMAIN WITHIN DIMENSIONS	MATERIAL NO. 850840020	MOLEX INCORPORATED DOCUMENT NO. SD-85084-700	SHEET NO. 4 OF 4		
		THIS DRAWING CONTAINS INFORMATION THAT IS PROPRIETARY TO MOLEX INCORPORATED AND SHOULD NOT BE USED WITHOUT WRITTEN PERMISSION					