

The high performance anti-fatigue mat

Composition: 4 mm vinyl upper surface on 100% nitrile closed cell foam of 10 mm (NT415) / 20 mm (NT615)

Applications: any type of workstation in the industrial environment with heavy traffic

Environment: dry or slightly oily

Advantages:

- 4 bevelled edges to limit the risk of falling
- very resistant thanks to its vinyl surface
- excellent grip thanks to its tread-plate surface look
- model with yellow marking to delimit a safety zone
- thermal insulation
- relieves back and leg fatigue
- **long lifespan and excellent shape memory** thanks to its thick 100% closed cell nitrile foam
- high resistance to wear
- improves working conditions and productivity for people standing
- high performance anti-fatigue function for 3x8 work
- NT615 : High performance

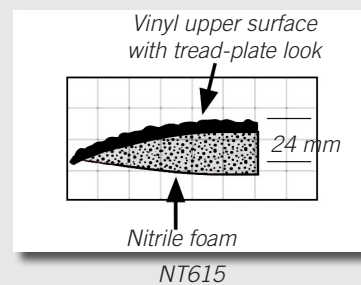
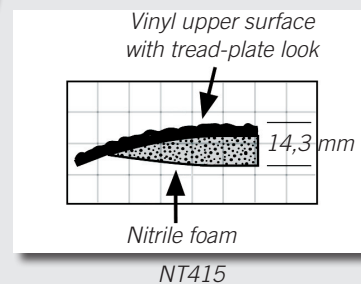
Colors: black (B) or black with yellow marking (BY)

+ Info:

- flexibility obtained by the material: foam
- cutting on request



Upper surface



Reference	Dimensions	Thickness	Weight
NT415B6191	61 x 91 cm	14,3 mm	3,2 kg/p
NT415B91152	91 x 152 cm	14,3 mm	7,3 kg/p
NT415B612290	0,61 x 22,9 m	14,3 mm	75,5 kg/rl
NT415B912290	0,91 x 22,9 m	14,3 mm	110,9 kg/rl
NT415B1222290	1,22 x 22,9 m	14,3 mm	154,5 kg/rl
NT415BY6191	61 x 91 cm	14,3 mm	3,2 kg/p
NT415BY91152	91 x 152 cm	14,3 mm	7,3 kg/p
NT415BY612290	0,61 x 22,9 m	14,3 mm	75,5 kg/rl
NT415BY912290	0,91 x 22,9 m	14,3 mm	110,9 kg/rl
NT415BY1222290	1,22 x 22,9 m	14,3 mm	154,5 kg/rl
NT615BY912290	0,91 x 22,9 m	24,0 mm	196,0 kg/rl

