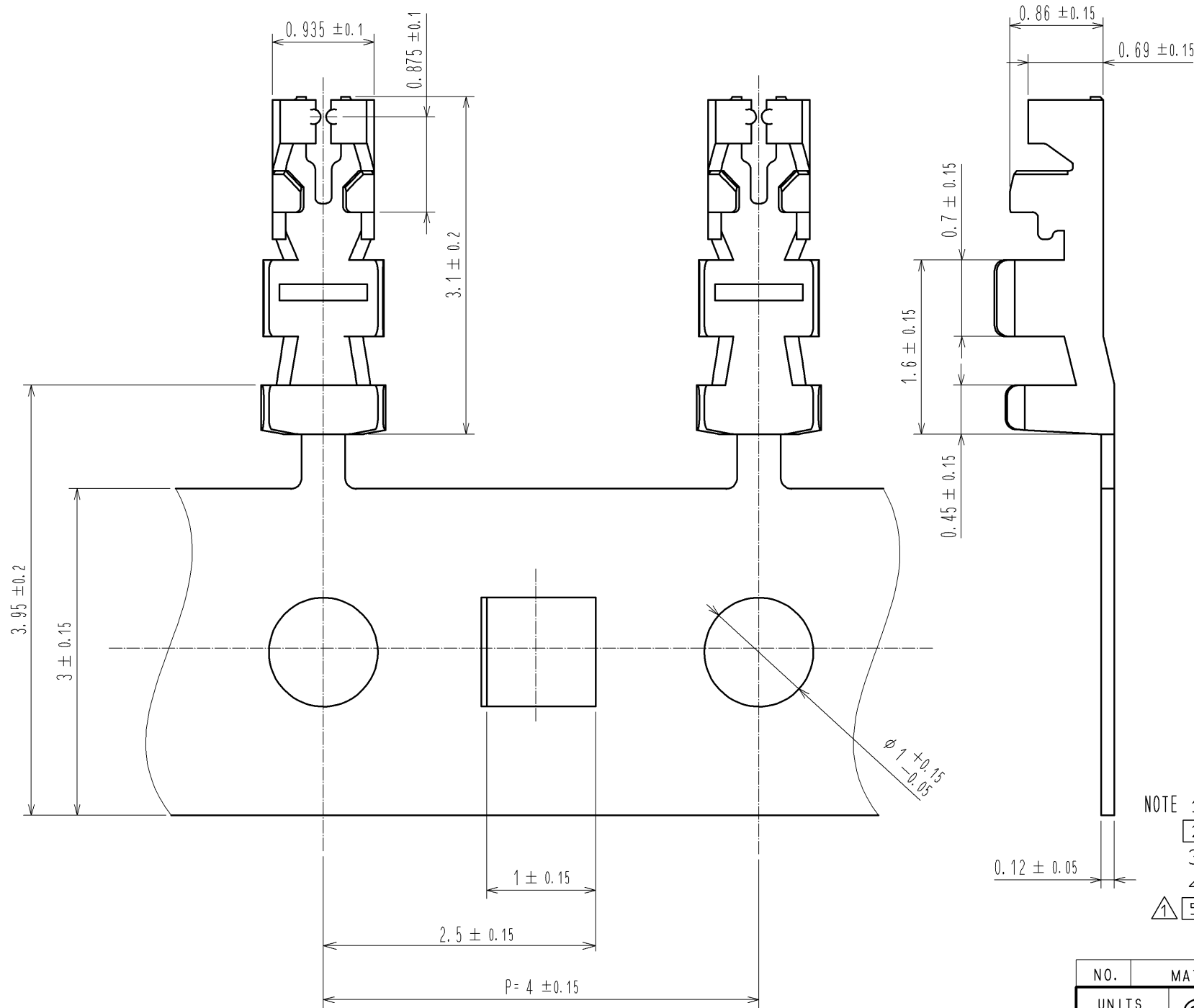


参考図：ご確認用。正式には別途納入仕様書をご請求願います。

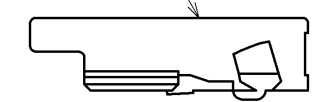
2010/08/03 16:36:06 SRoper



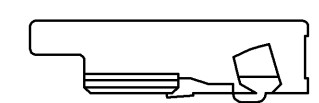
5 FIGURE OF INSERTION \triangle

HORIZONTALLY \circ

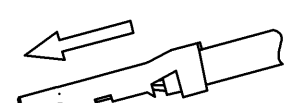
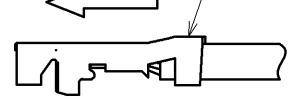
DF57-*S-1.2C



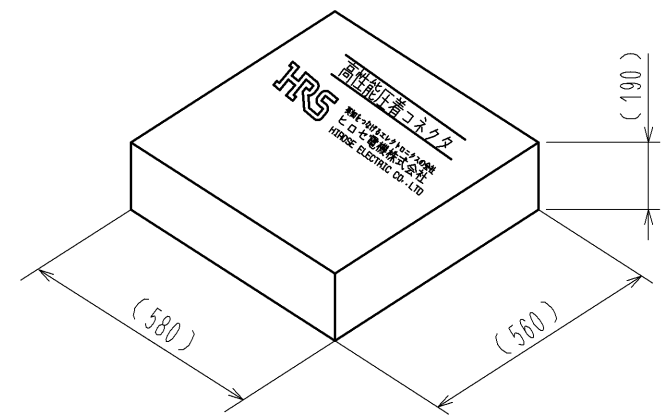
DIAGONAL \times



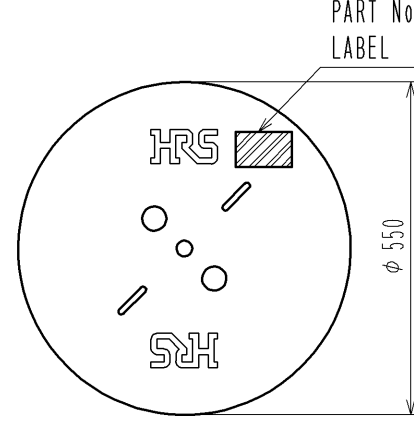
DF57-2830SCF



2 STYLE AND DIMENSION OF BOX



2 STYLE AND DIMENSION OF REEL



DETAIL OF PART No. LABEL

| | | |
|---------|--------------|----|
| HRS | | 検査 |
| 品名コード | CL666-0001-4 | |
| 品名 | DF57-2830SCF | |
| 数量 | 40000 | |
| 仕様 | | |
| LOT No. | | |
| 継ぎ目 | | |

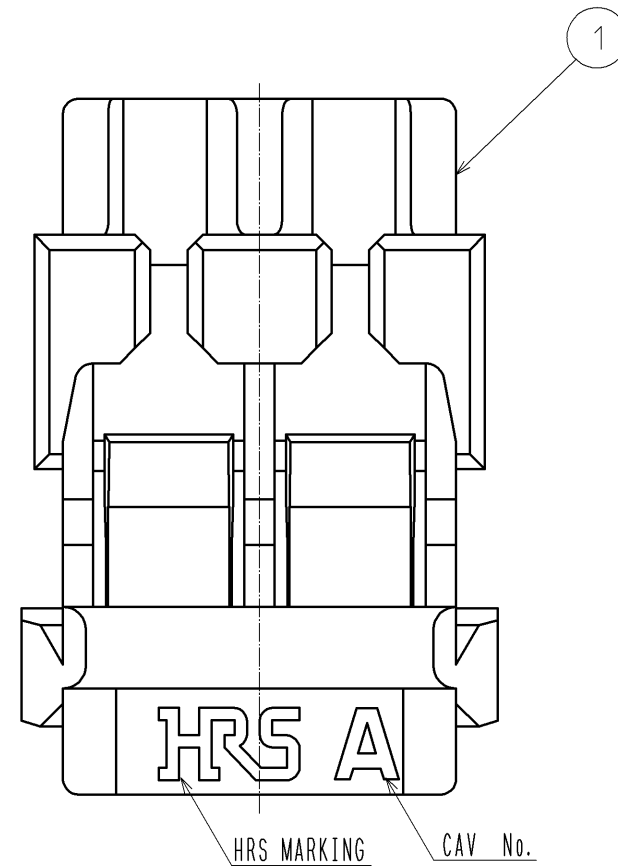
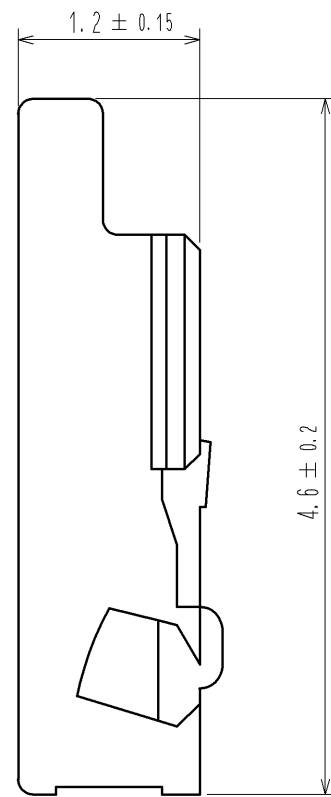
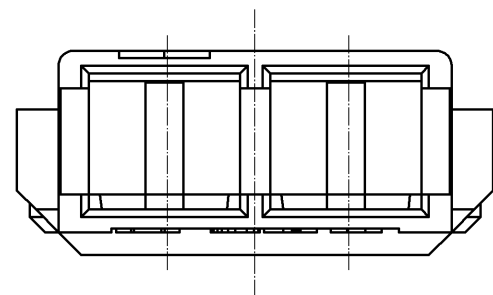
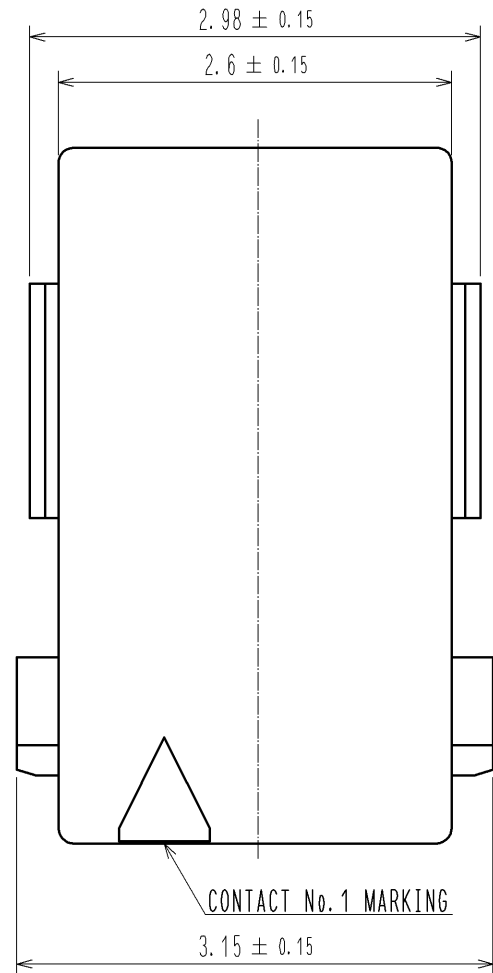
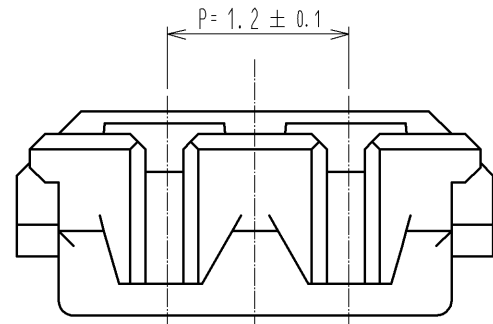
SECTION
Lot No.
SPECIFICATION
QUANTITY
PART No.
CODE No.

- NOTE 1. 1RL:40000 CONTACTS.
 2 STYLE OF REEL AND BOX SHOWS IN FIGURE.
 3. A MAXIMUM OF 5 REELS ARE PACKED UP IN ONE BOX.
 4. PLEASE BE SURE TO CHECK THE FORM OF CRIMPING USING A CABLE. WHEN YOU ADJUST APPLICATOR.
 5 AVOID ANGLED INSERTION OF CRIMP CONTACT(DF57-2830SCF) TO MAINTAIN PERFORMANCE RELIABILITY.

| NO. | MATERIAL | FINISH . REMARKS | NO. | MATERIAL | FINISH . REMARKS | | |
|-------------------------------|---------------------|------------------|----------|--------------------------|-----------------------------------|-------------|----------|
| | | | 1 | PHOSPHOR BRONZE | SURFACE: TIN PLATING 1 μ mMIN | | |
| UNITS | \odot \triangle | SCALE | COUNT | DESCRIPTION OF REVISIONS | DESIGNED | CHECKED | DATE |
| mm | | 20:1 | 2 | DIS-H-004418 | TS. KUMAZAWA | HK. UMEHARA | 09.12.19 |
| HRS HIROSE ELECTRIC CO., LTD. | | APPROVED | 09.11.30 | DRAWING NO. | EDC3-322918-00 | | |
| | | CHECED | 09.11.28 | PART NO. | DF57-2830SCF | | |
| | | DESIGNED | 09.11.28 | CODE NO. | CL666-0001-4-00 | | |
| | | DRAWN | 09.11.28 | | | | |

参考図：ご確認用。正式には別途納入仕様書をご請求願います。

2010/08/03 16:36:07 SRoper

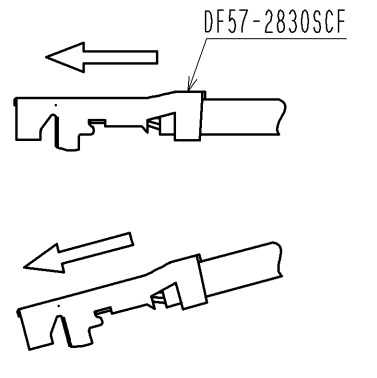


① FIGURE OF INSERTION ⚠

HORIZONTALLY ○

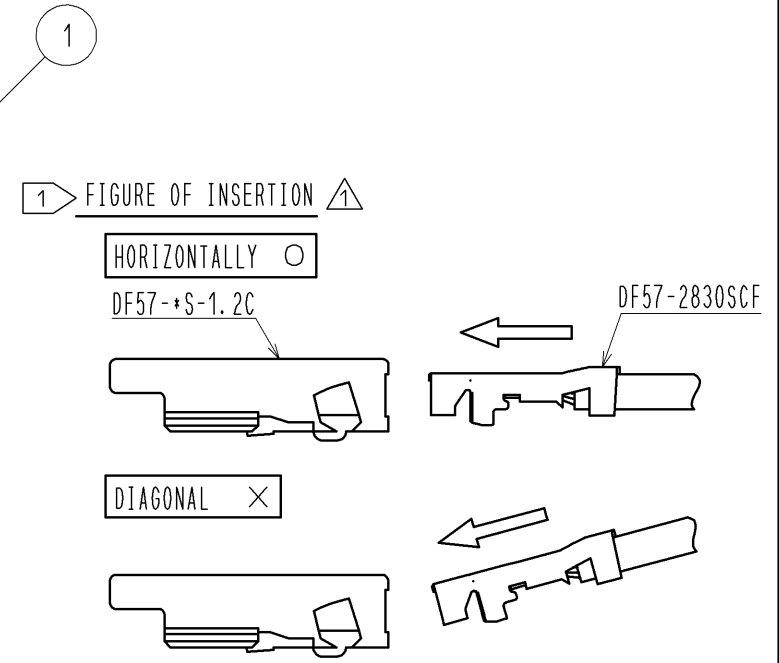
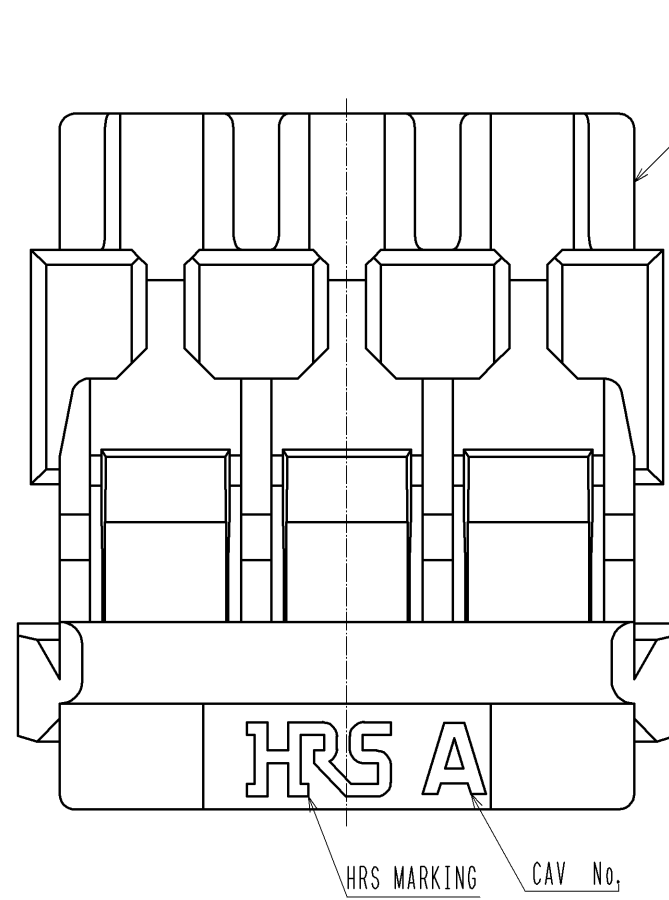
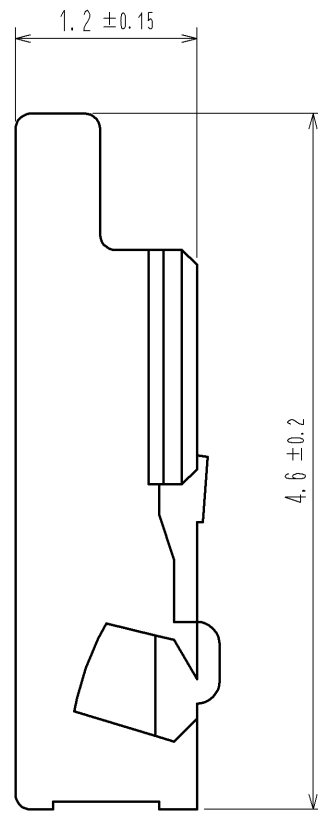
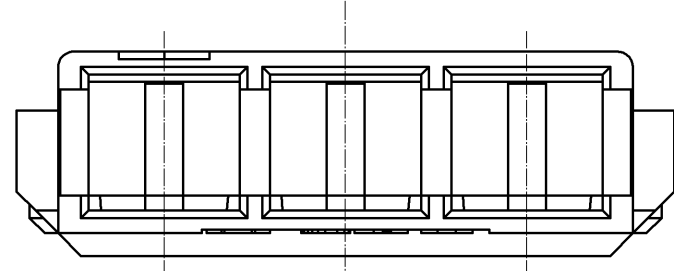
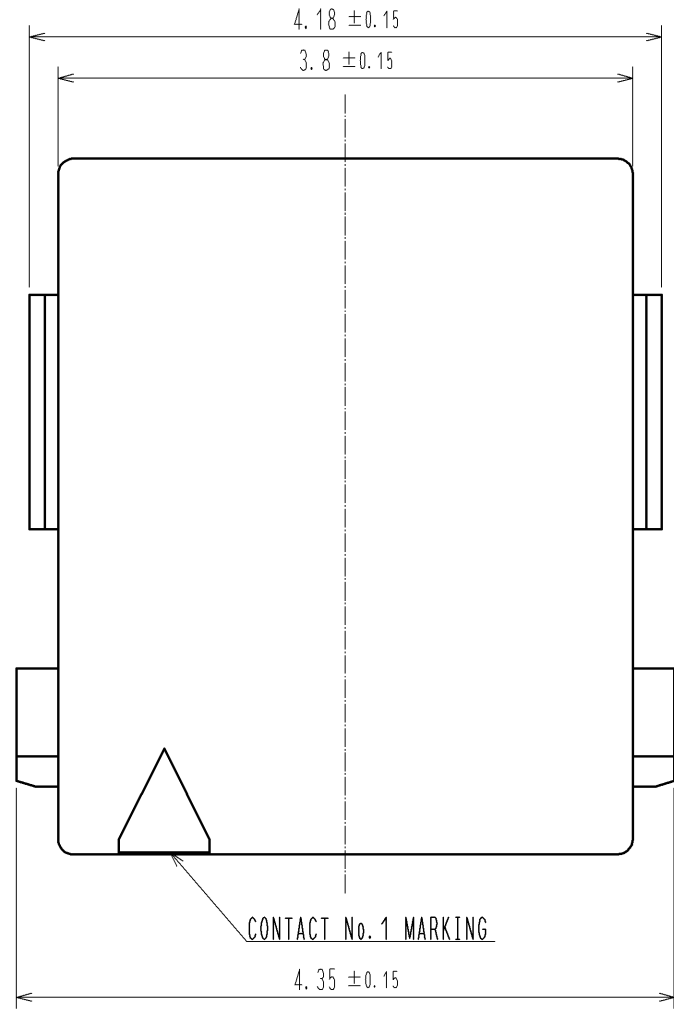
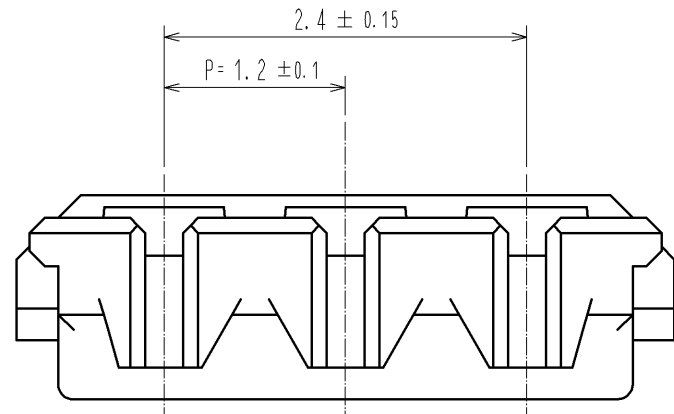
DF57-+S-1.2C

DIAGONAL ×



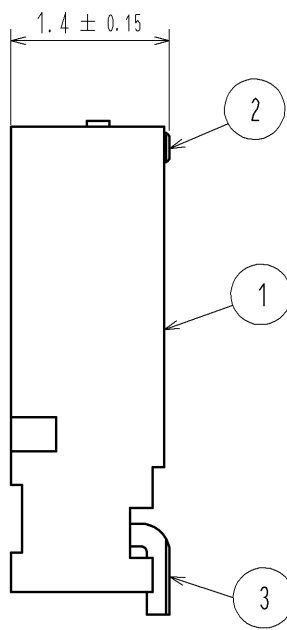
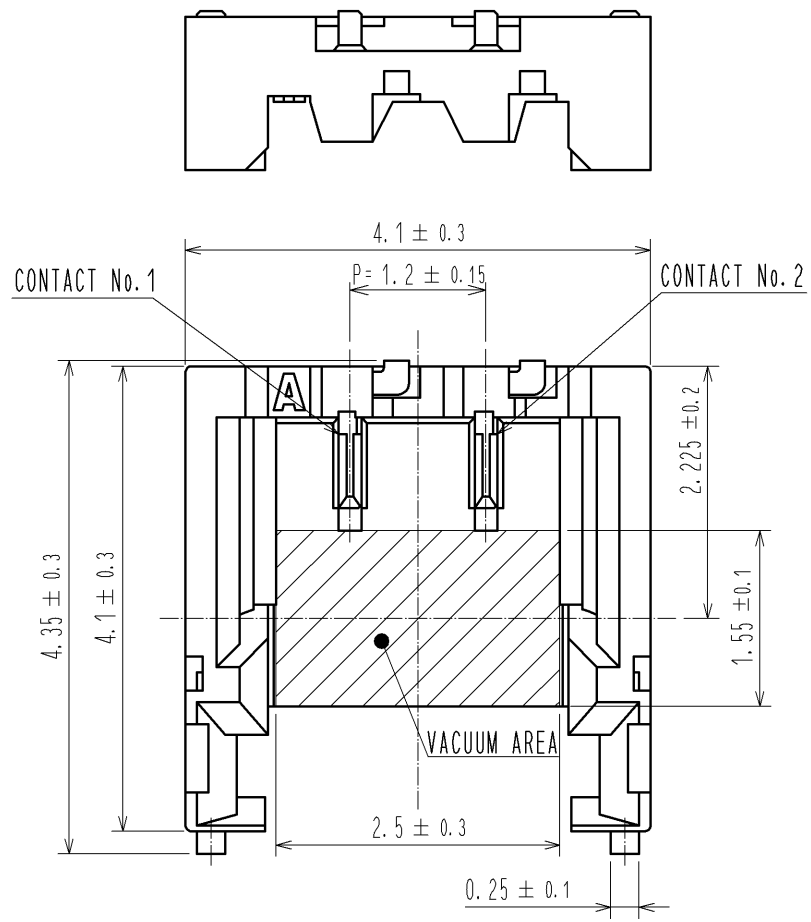
⚠ NOTE ① AVOID ANGLED INSERTION OF CRIMP CONTACT(DF57-2830SCF) TO MAINTAIN PERFORMANCE RELIABILITY.

| NO. | MATERIAL | FINISH . REMARKS | NO. | MATERIAL | FINISH . REMARKS |
|--|----------|------------------|-------------------------------|--------------------------|-------------------------|
| | | | 1 | PBT | UL94V-0. NATURAL(WHITE) |
| UNITS mm | | SCALE 20:1 | COUNT 2 | DESIGNED TS. KUMAZAWA | CHECKED HK. UMEHARA |
| DESCRIPTION OF REVISIONS DIS-H-004418 | | | DATE 09.12.19 | | |
| APPROVED : TS. SAKATA 09.11.30 | | | DRAWING NO. EDC3-322922-00 | | |
| CHECKED : MN. KENJO 09.11.28 | | | PART NO. DF57-2S-1.2C | | |
| DESIGNED : TS. KUMAZAWA 09.11.28 | | | CODE NO. CL666-0005-5-00 | | |
| DRAWN : TS. KUMAZAWA 09.11.28 | | | ①/1 | | |

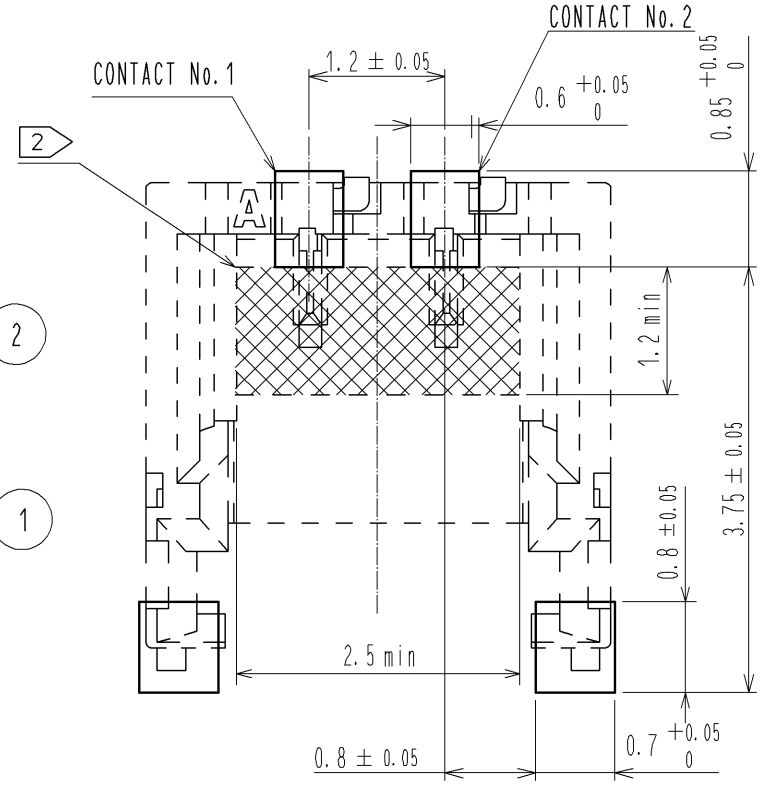


⚠ NOTE ① AVOID ANGLED INSERTION OF CRIMP CONTACT(DF57-2830SCF) TO MAINTAIN PERFORMANCE RELIABILITY.

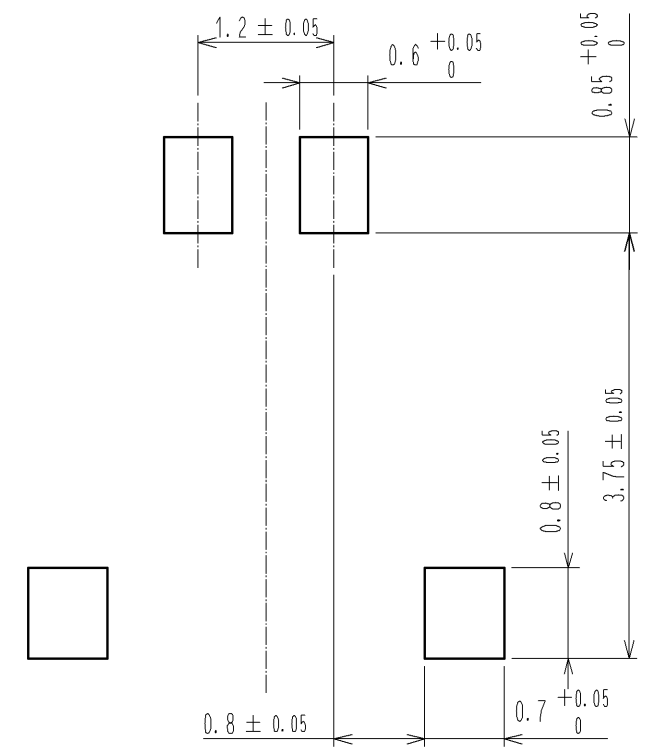
| NO. | MATERIAL | FINISH . REMARKS | NO. | MATERIAL | FINISH . REMARKS |
|--------------------------------------|----------|------------------|--------------------------|--------------------------|-------------------------------|
| | | | 1 | PBT | UL94V-0. NATURAL(WHITE) |
| UNITS mm | | SCALE 20:1 | COUNT 2 | DESCRIPTION OF REVISIONS | |
| | | | DESIGNED TS. KUMAZAWA | | CHECKED HK. UMEHARA |
| | | | DATE 09. 12. 19 | | |
| HRS HIROSE ELECTRIC CO., LTD. | | | APPROVED : TS. SAKATA | 09. 11. 30 | DRAWING NO. EDC3-322923-00 |
| | | | CHECED : MN. KENJO | 09. 11. 28 | PART NO. DF57-3S-1. 2C |
| | | | DESIGNED : TS. KUMAZAWA | 09. 11. 28 | CODE NO. CL666-0006-8-00 |
| | | | DRAWN : TS. KUMAZAWA | 09. 11. 28 | 1/1 |



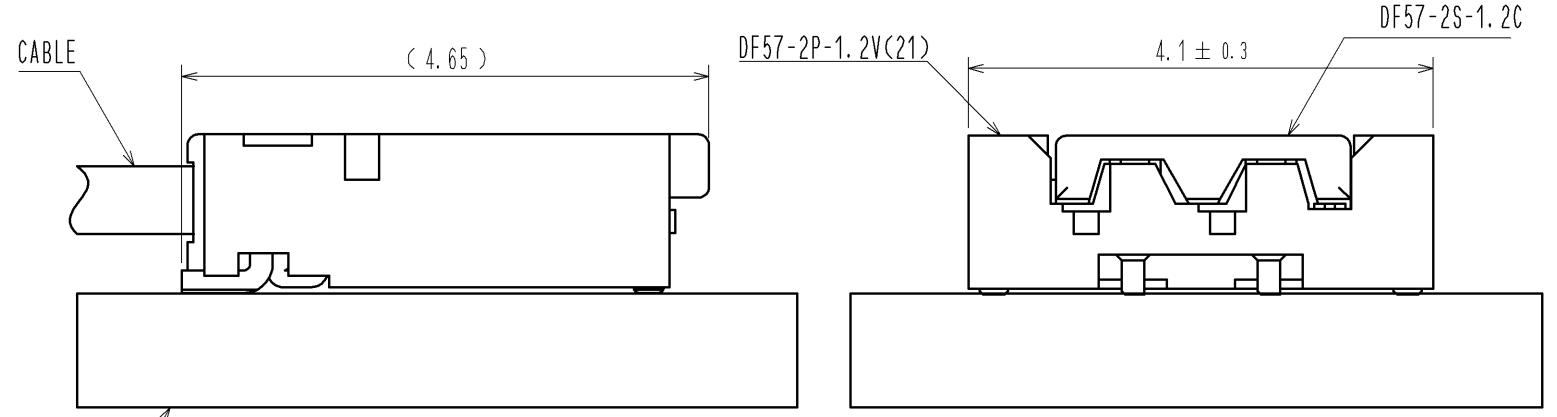
RECOMMENDED PCB LAYOUT
(MOUNTING SURFACE SIDE)(FREE)



RECOMMENDED METAL MASK (FREE)
THICKNESS : 0.1mm



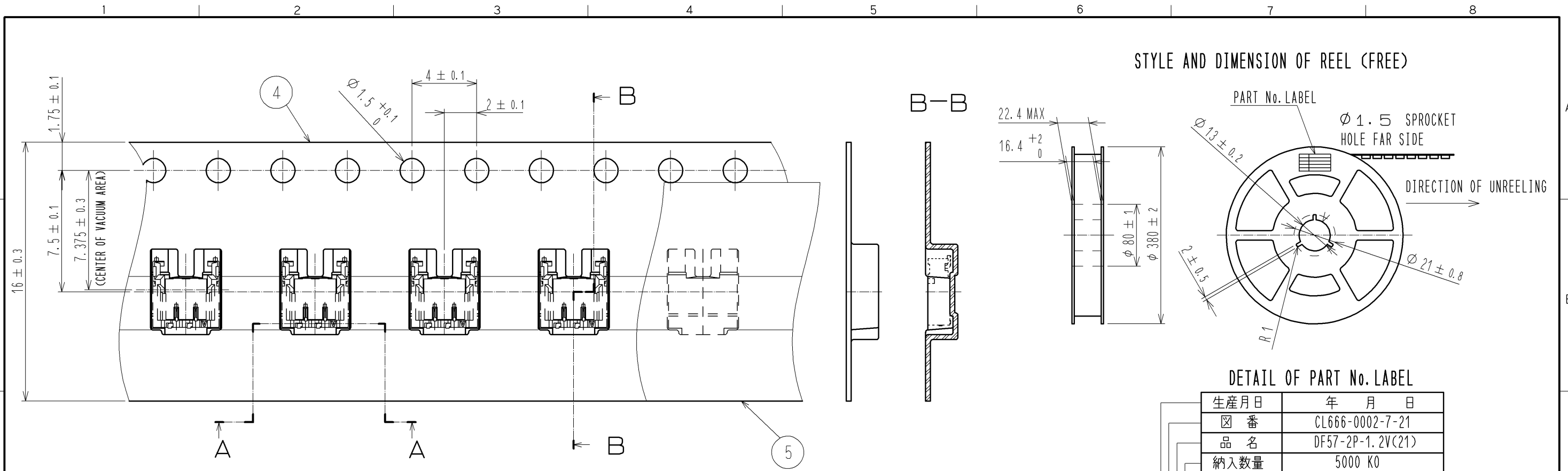
MATING FIGURE (FREE)



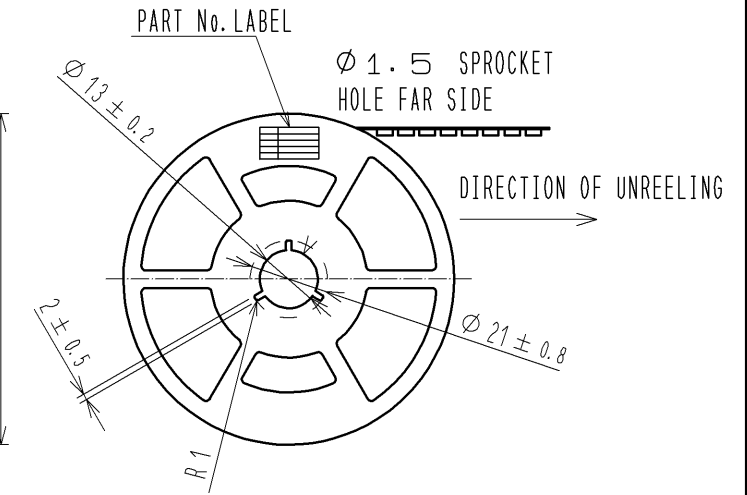
NOTE1. LEAD CO-PLANARITY SHALL BE 0.1mmMAX.
 2 AREA INDICATED MUST BE FREE OF CONDUCTIVE TRACES OR THE CONDUCTIVE TRACES MUST BE COVERED BY RESIST FILM.

| 3 | BRASS | SURFACE:TIN PLATING 1μmMIN UNDER PLATING: NICKEL PLATING 0.5μmMIN | 6 | PS | REEL , BLACK |
|-----|----------|--|-----|-----------|-------------------------------|
| 2 | BRASS | SURFACE:TIN PLATING 1μmMIN UNDER PLATING: NICKEL PLATING 0.5μmMIN | 5 | POLYESTER | CLEAR (COVER TAPE) |
| 1 | LCP | UL94V-0, BLACK | 4 | PS | CLEAR (EMBOSSED CARRIER TAPE) |
| NO. | MATERIAL | FINISH , REMARKS | NO. | MATERIAL | FINISH , REMARKS |

| | | | | | | | |
|----------------------------------|--|---------------|------------|----------------------------|----------|---------|------|
| UNITS mm | | SCALE FREE | COUNT △ | DESCRIPTION OF REVISIONS | DESIGNED | CHECKED | DATE |
| APPROVED : TS. SAKATA 09.11.30 | | | | DRAWING NO. EDC3-322919-01 | | | |
| CHECKED : MN. KENJO 09.11.28 | | | | PART NO. DF57-2P-1.2V(21) | | | |
| DESIGNED : TS. KUMAZAWA 09.11.28 | | | | CODE NO. CL666-0002-7-21 | | | |
| DRAWN : TS. KUMAZAWA 09.11.28 | | | | △ 1/2 | | | |



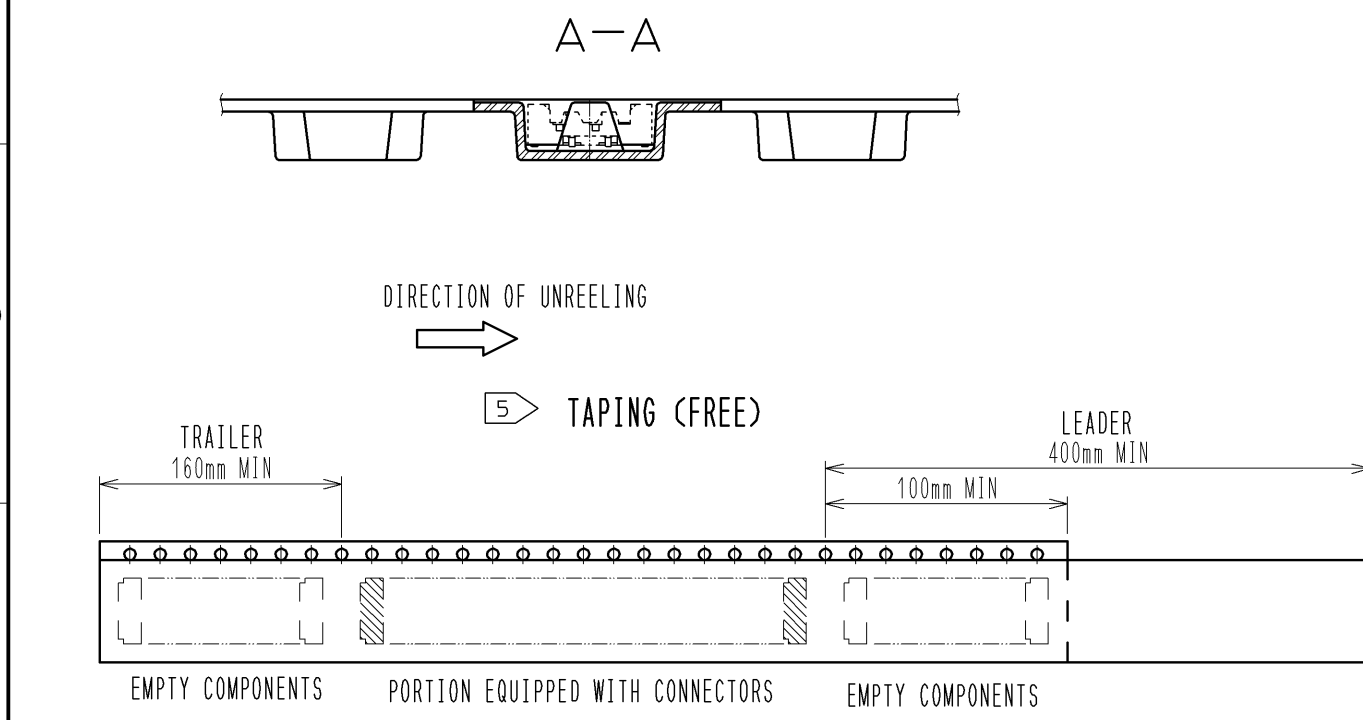
STYLE AND DIMENSION OF REEL (FREE)



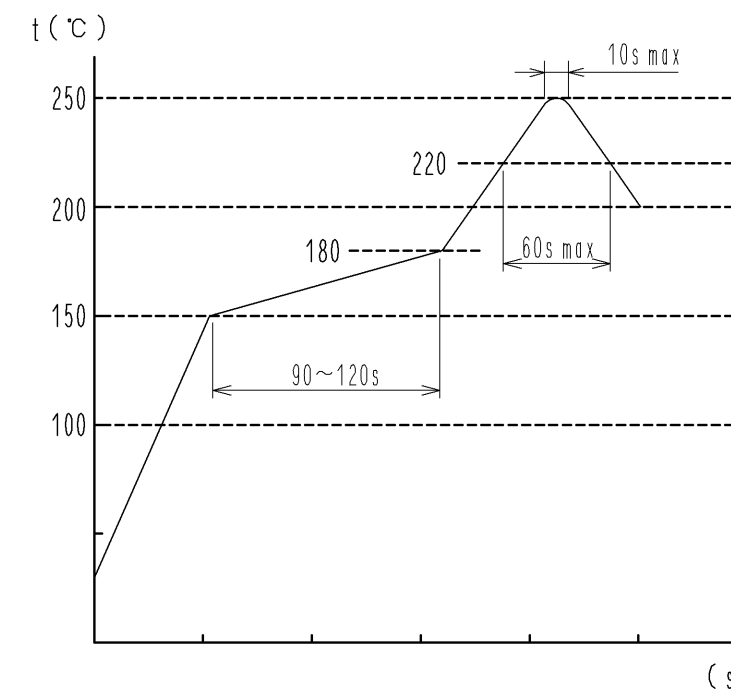
DETAIL OF PART No. LABEL

| | |
|------|------------------|
| 生産月日 | 年 月 日 |
| 図 番 | CL666-0002-7-21 |
| 品 名 | DF57-2P-1.2V(21) |
| 納入数量 | 5000 KO |
| 納入者 | ヒロセ電機(株) |

- SUPPLIER
- QUANTITY
- PART No.
- CODE No.
- DATE OF MANUFACTURED



REFLOW TEMPERATURE PROFILE USING LEAD-FREE SOLDER PASTE (REFERENCE)

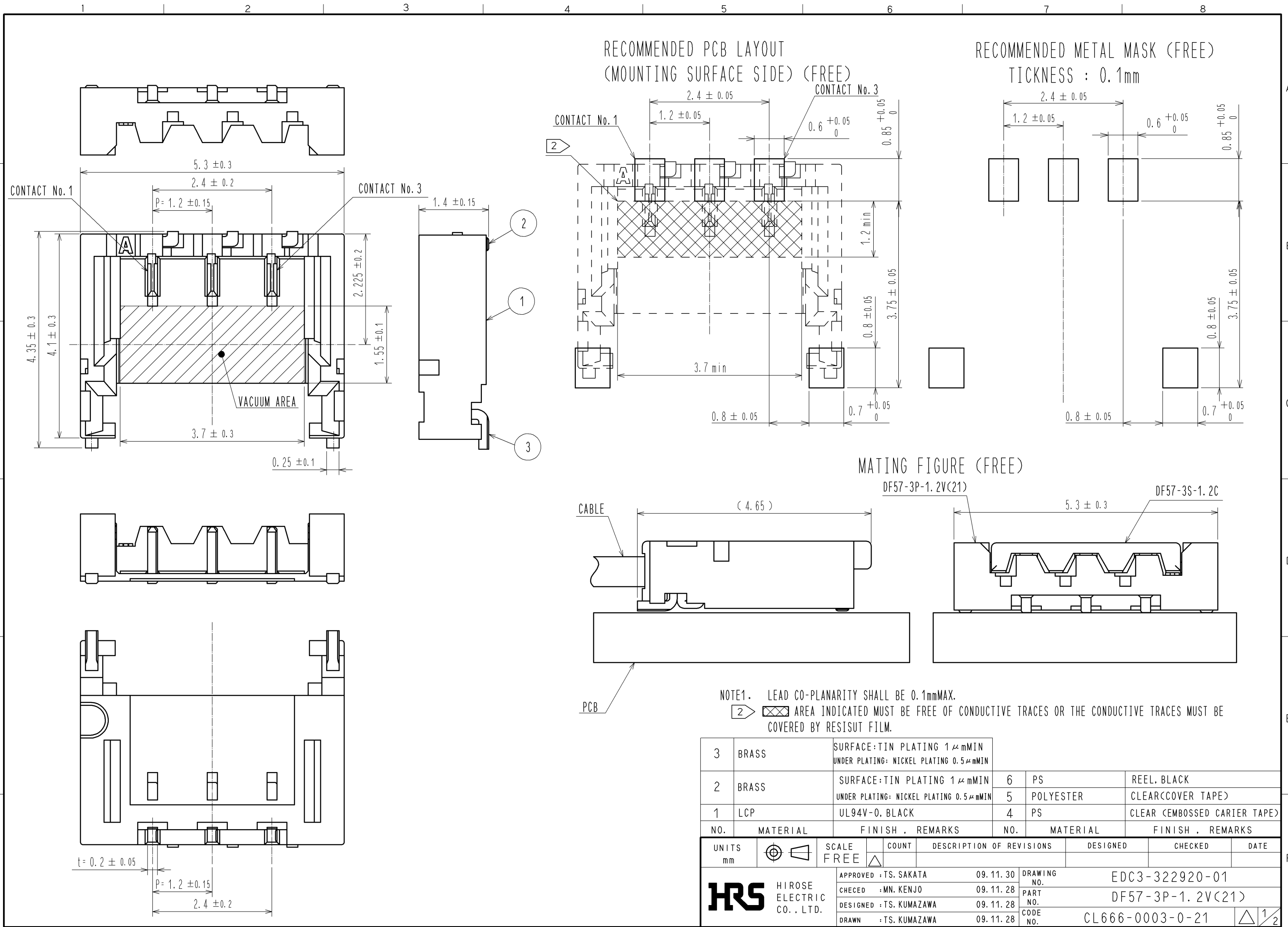


NUMBER OF REFLOW CYCLES 2 CYCLES MAX.
THE TEMPERATURE IS MEASURED IN THE TERMINAL LEAD PART.

ADDITIONAL FACTORS, SUCH AS SOLDER PASTE TYPE, PCB SIZE AND OTHER MOUNTED COMPONENTS COULD AFFECT THE PROFILE. THEREFORE, A THOROUGH EVALUATION OF MOUNTING CONDITION IS REQUIRED PRIOR TO PRODUCTION. TEMPERATURE IS MEASURED AT CONTACT LEAD.

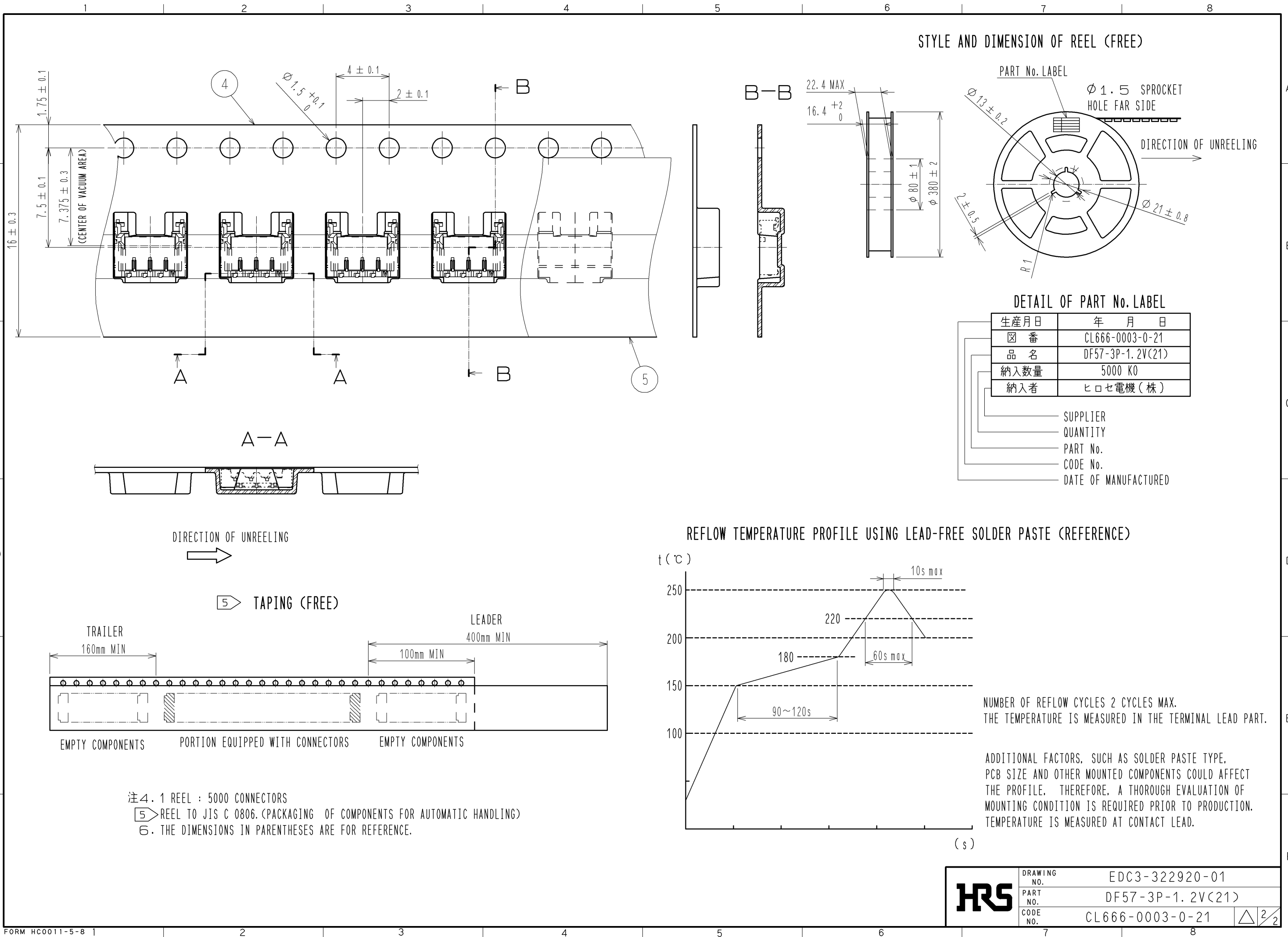
注4. 1 REEL : 5000 CONNECTORS
 ⑤ REEL TO JIS C 0806. (PACKAGING OF COMPONENTS FOR AUTOMATIC HANDLING)
 ⑥. THE DIMENSIONS IN PARENTHESES ARE FOR REFERENCE.

| | | |
|------------|-------------|------------------|
| HRS | DRAWING NO. | EDC3-322919-01 |
| | PART NO. | DF57-2P-1.2V(21) |
| | CODE NO. | CL666-0002-7-21 |
| | | △ 2/2 |



NOTE1. LEAD CO-PLANARITY SHALL BE 0.1mmMAX.
 2. AREA INDICATED MUST BE FREE OF CONDUCTIVE TRACES OR THE CONDUCTIVE TRACES MUST BE COVERED BY RESIST FILM.

| 3 | BRASS | SURFACE: TIN PLATING 1 μmMIN UNDER PLATING: NICKEL PLATING 0.5 μmMIN | | | |
|-------------------------|----------|---|----------|-----------|-------------------------------|
| 2 | BRASS | SURFACE: TIN PLATING 1 μmMIN UNDER PLATING: NICKEL PLATING 0.5 μmMIN | 6 | PS | REEL, BLACK |
| 1 | LCP | UL94V-0, BLACK | 5 | POLYESTER | CLEAR(COVER TAPE) |
| | | | 4 | PS | CLEAR (EMBOSSED CARRIER TAPE) |
| NO. | MATERIAL | FINISH, REMARKS | NO. | MATERIAL | FINISH, REMARKS |
| UNITS mm | | SCALE FREE | COUNT | | DESCRIPTION OF REVISIONS |
| DESIGNED | | CHECKED | | DATE | |
| APPROVED : TS. SAKATA | | | 09.11.30 | | |
| CHECED : MN. KENJO | | | 09.11.28 | | |
| DESIGNED : TS. KUMAZAWA | | | 09.11.28 | | |
| DRAWN : TS. KUMAZAWA | | | 09.11.28 | | |
| DRAWING NO. | | EDC3-322920-01 | | | |
| PART NO. | | DF57-3P-1.2V(21) | | | |
| CODE NO. | | CL666-0003-0-21 | | | |



| | | |
|------------|-------------|------------------|
| HRS | DRAWING NO. | EDC3-322920-01 |
| | PART NO. | DF57-3P-1.2V(21) |
| | CODE NO. | CL666-0003-0-21 |
| | | \triangle 2/2 |