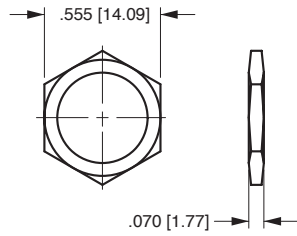


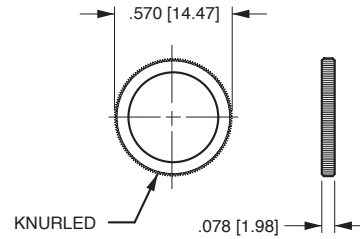
Bushing Accessories

The hardware options and accessories listed below were specifically designed to be used with toggle and pushbutton switches. To make it easier for you to select the required hardware, we have identified the finish material. The drawings are representative of the actual products. When other hardware options are required, please consult factory.



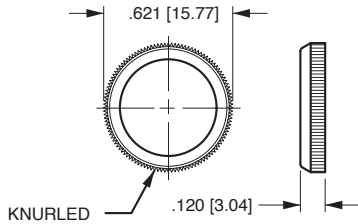
STANDARD HEXNUT

.562" X .076"
 [14.27] X [1.93]
 NICKEL - 380-08602
 BLACK - 380-08606



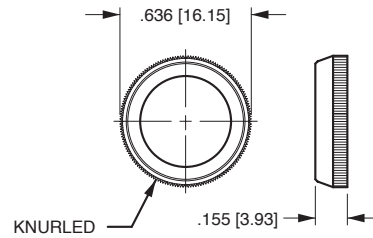
STANDARD FACENUT

.570" X .078"
 [14.47] X [1.98]
 NICKEL - 380-08693
 BLACK - 380-08694



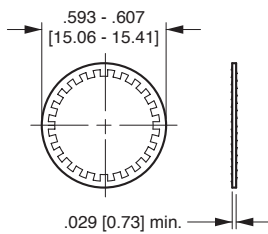
PLASTIC FACENUT

(Wrench supplied N/C)
 .625" X .120"
 [15.87] X [3.04]
 BLACK - 384-17126-001
 RED 384-17126-002
 WHITE - 384-17126-003



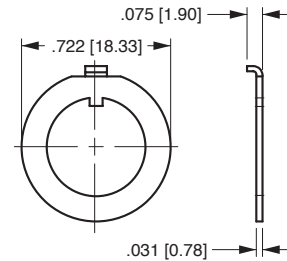
DRESS FACENUT

.636" X .155"
 [16.15] X [3.93]
 NICKEL - 380-08810
 BLACK - 380-08811



LOCKWASHER

NICKEL-PLATED - 728-15907



LOCKING RING

ZINC - 728-15946
 BLACK - 728-15947

Bushing Accessories

Brass Locknuts			
DIMENSIONS, INCHES			
PART NUMBER	OUTER DIAMETER	WIDTH	PLATING
380-08603	0.555	0.078	Dull Nickel
380-08657	0.625	0.073	Nickel
380-08666	0.562 MAX	0.094	Nickel
380-08668	0.562 MAX	0.094	Black
380-08675	0.500	0.060	Nickel
380-08755	0.625	0.180	Nickel

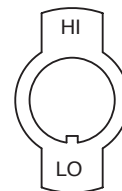
Brass Facenut			
DIMENSIONS, INCHES			
PART NUMBER	OUTER DIAMETER	WIDTH	PLATING
380-08784	0.500	0.060	Nickel

All indicator plates are nickel-plated steel. Odd keyway locations, alternate imprints and plating available on special order. Contact factory for minimum quantities and specifications.

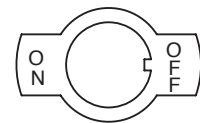
ALL PLATES SHOWN FIT 15/32" (.465 [11.81]) BUSHINGS



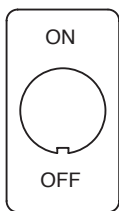
Y01
272-06747



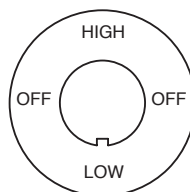
Y02
272-06764



Y51
272-06842



Y101
272-06935



Y311
272-07258



Y500
272-07293

