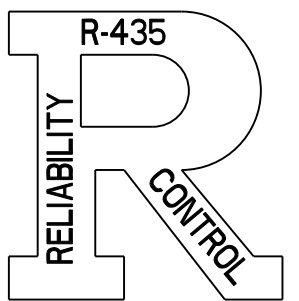
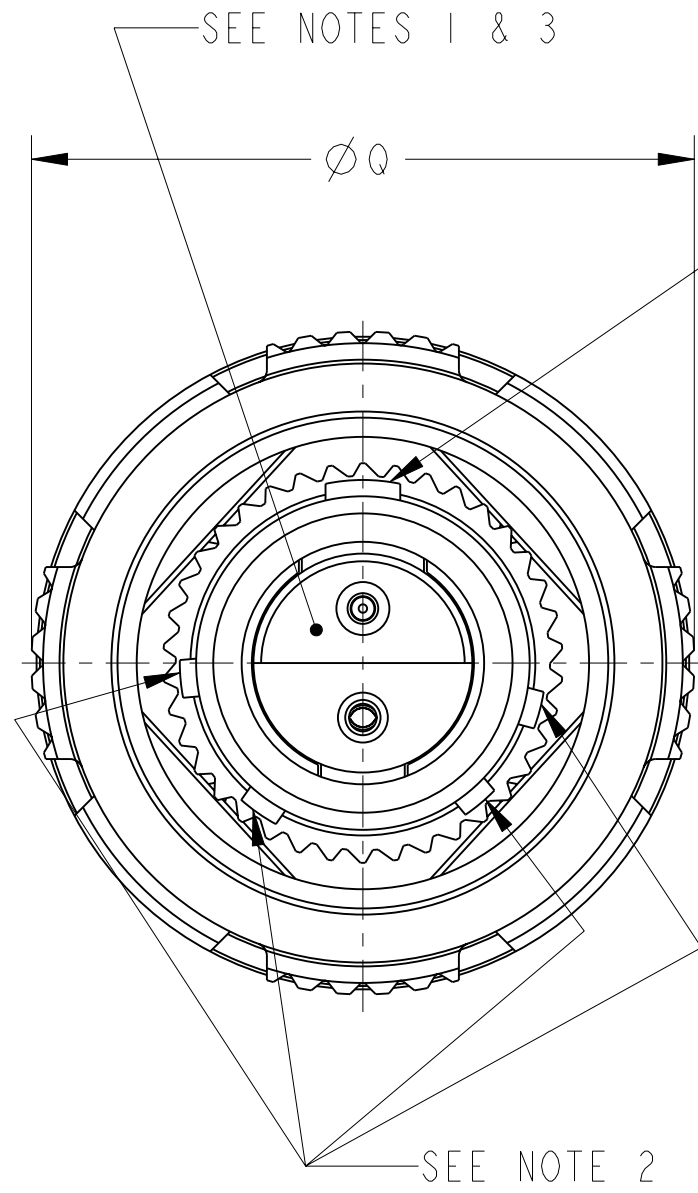
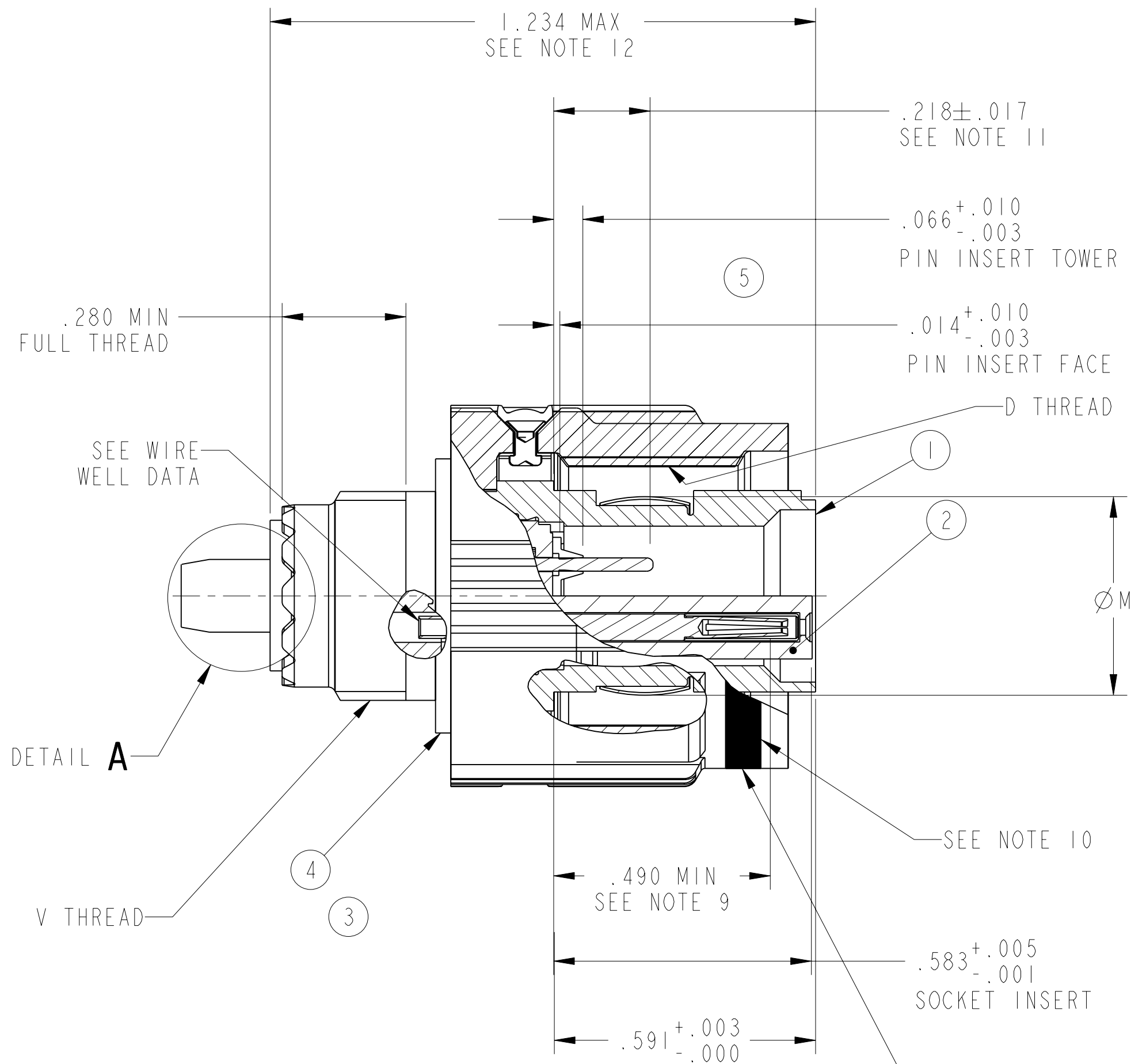


REVISIONS			
LTR	DESCRIPTION	DATE	APPVD
F	(CL 11) PARTS LIST CHANGE TO 88-578854-18P CHANGED INSERT FROM -19P TO -18P ECN: 86921	V. JONES 9-14-99	D. A.
G	(CL) STANDARDIZED M39029/90,91 ECN: 87148	D. ALGER 10/20/99	K. DAVIS III 11-17-99
H	(CL 11) ADDED TO POS. 5 "(OR) '()8 ECN: 92769	V. JONES 3-18-03	
J	(CL 1) SEE ECN: A9482	V. ESPOSITO 7/27/16	



STAMP "AMPHENOL", DATE CODE PER 9-3895, MS NUMBER & LOT NUMBER PER 9-5788 INCLUDE "J" PREFIX SEE NOTE 13  
 EXAMPLE:  
 AMPHENOL JD38999/26JA35PN 9211 001000  
 FOR ROTATED KEYS  
 EXAMPLE:  
 AMPHENOL JD38999/26JA35PA 9211 001000

POS	QTY	PART NUMBER	DESCRIPTION	NOTE
7		SEE NOTE 5	CONTACTS	4, 5
6	SEE NOTE 5	10-452952	INSULATOR ASSEMBLY	5
5	1	10-442297-()9 (OR) -()8	GROUND STRAP	5
4	1	SEE COLUMN	SNAP RING	
3	1	10-594896-()	COUPLING NUT	5
2	1	10-552440/449-()P OR	INSERT, PIN	3, 5
		10-538170/179-()P OR		3, 5
		10-676060/069-()P OR		3, 5
		10-555407/429-()S OR	INSERT, SOCKET	3, 5
1	1	10-417307/350-()S		3, 5
1	1	10-527332/337-()R	SHELL, PLUG	5

UNLESS OTHERWISE SPECIFIED		APPROVALS		DATE		PARTS LIST			
LINEAR DIMENSIONS ARE IN INCHES		PREPARED	D. FREAR	15-JUN-92	<b>AMPHENOL CORPORATION</b> 40-60 DELAWARE AVENUE SIDNEY, N. Y.				
TOLERANCES:		CHECKED	D. FREAR	18-JUN-92					
.XXXX = ±.0005		MATERIAL			CONNECTOR, ELECTRICAL PLUG, TYPE MSCTV06RJ(), OLIVE DRAB CADMIUM PLATED NICKEL BASE PLATE, GOLD PLATED CONTACTS				
.XXX = ±.010		APPROVED	D. FREAR	18-JUN-92					
.XX = ±.03		APPROVED		D. MacAvoy	17-JUN-92	SIZE	FSCM NO.	DOCUMENT NO.	REV.
.X = ±.1		OTHER STANDARDS PER 9-3800 AND DOD-D-1000		PRO/ENG MODEL INFORMATION		C	77820	88-578850/859	J
ANGLES = ±2°		THIRD ANGLE PROJECTION		CTV06_MASTER.ASSEM		SCALE: 4.0	REF:	88-577760/769	SHEET 1 OF 2
				88-578850.859					

SEE SHEET 2

**NOTES:**  
 THE USE OF THIS DOCUMENT IS UNLIMITED. HOWEVER, DOCUMENTS REFERENCED HEREON MAY CONTAIN LIMITED RIGHTS DATA.

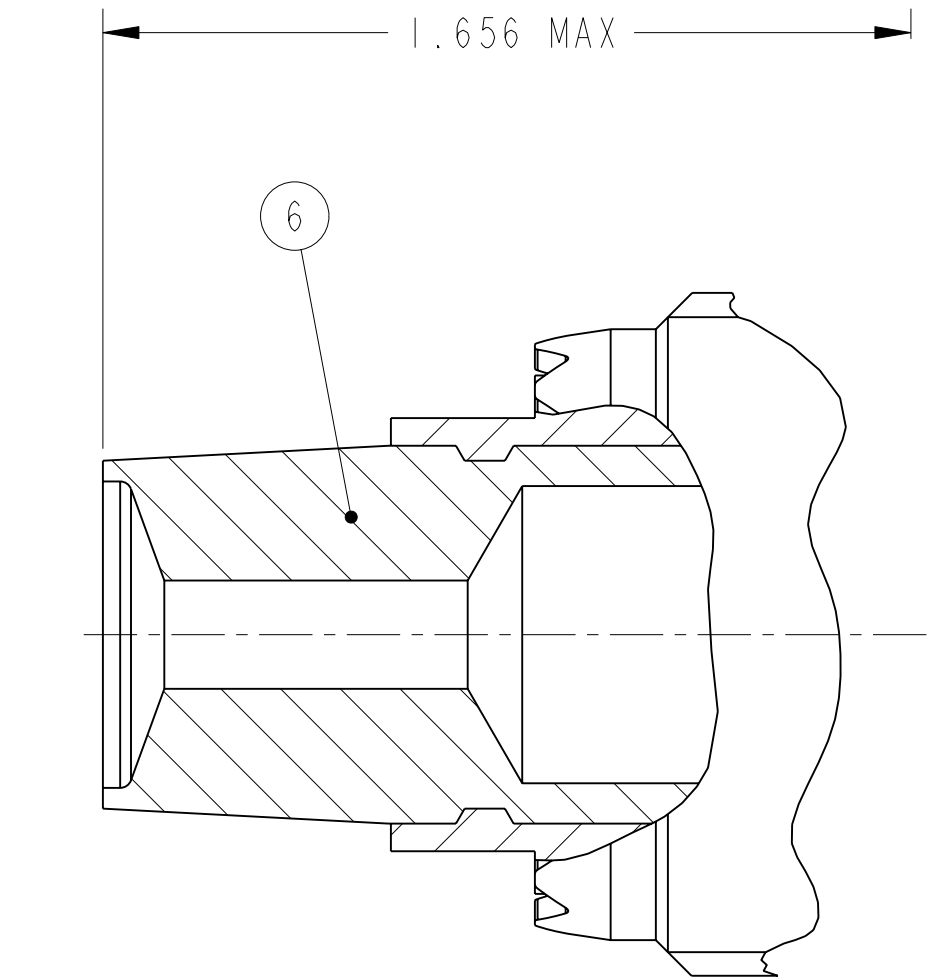
COMPANY ID: X	CODED/MS/CUST: X	N/A
INTERNAL: X	LOT NO: X	N/A
DATE CODE: 9-3895	SEE DRAW: X	
STAMPING DATA		NEXT ASSEMBLY

ASSEMBLY NUMBER	MS NUMBER	SNAP RING	D THREAD MODIFIED PER 9-3200-2		Ø M OVER TINES	Ø Q MAX	V THREAD (PLATED) PER 9-7543
			SIZE CLASS 2B	MODIFIED MINOR DIA			
88-578850-()			NOT AVAILABLE				
88-578851-()	D38999/26JA()	10-483953-9	.6250-0.1P-0.3L-TS	.5892-.5828	.449	.858	M12 X 1-6g 0.100R
88-578852-()	D38999/26JB()	10-483953-59	.7500-0.1P-0.3L-TS	.7142-.7078	.577	.984	M15 X 1-6g 0.100R
88-578853-()	D38999/26JC()	10-483953-71	.8750-0.1P-0.3L-TS	.8392-.8328	.694	1.157	M18 X 1-6g 0.100R
88-578854-()	D38999/26JD()	10-483953-87	1.0000-0.1P-0.3L-TS	.9642-.8578	.819	1.279	M22 X 1-6g 0.100R
88-578855-()	D38999/26JE()	10-483953-98	1.1875-0.1P-0.3L-TS	1.1394-1.1330	.944	1.405	M25 X 1-6g 0.100R
88-578856-()	D38999/26JF()	10-483953-109	1.2500-0.1P-0.3L-TS	1.2020-1.1956	1.049	1.515	M28 X 1-6g 0.100R
88-578857-()	D38999/26JG()	10-483953-121	1.3750-0.1P-0.3L-TS	1.3270-1.3206	1.174	1.641	M31 X 1-6g 0.100R
88-578858-()	D38999/26JH()	10-483953-134	1.5000-0.1P-0.3L-TS	1.4520-1.4456	1.299	1.767	M34 X 1-6g 0.100R
88-578859-()	D38999/26JJ()	10-552949-24	1.6250-0.1P-0.3L-TS	1.5770-1.5706	1.424	1.889	M37 X 1-6g 0.100R

TO COMPLETE, ADD INSERT ARRANGEMENT SUFFIX PER 9-2437-25

WIRE WELL DATA

CONTACT SIZE	22M	22D	22	20	16	12
	WELL DIA	.028±.001	.0345±.0010	.0365±.0010	.047±.001	.067±.001
WELL DEPTH	.141 <sup>+.016</sup> <sub>-.000</sub>	.141 <sup>+.016</sup> <sub>-.000</sub>	.141 <sup>+.016</sup> <sub>-.000</sub>	.209 <sup>+.020</sup> <sub>-.000</sub>	.209 <sup>+.020</sup> <sub>-.000</sub>	.209 <sup>+.020</sup> <sub>-.000</sub>



DETAIL A  
ENLARGED  
FOR SIZE 8 COAXIAL CONTACT ONLY

7. PROCESS SPEC:

ASSY 9-5047-13, 9-4407-13, 9-7374-1  
TEST 9-5726  
9-2437-25, 9-5788, 9-3200-2, 9-7543, 9-3895  
SPECIAL CONTROL 9-6000-2, PROCESS CONTROL 9-4796

6. PACKAGE PER PRODUCTION PROCESS SHEET.

5. SEE SEPARATE PARTS LIST FOR COMPONENT PART NUMBERS AND QUANTITIES.

4. DRAWING ILLUSTRATES FINAL ASSEMBLY. FOR FINAL INSTALLATION, CONTACTS MUST BE ASSEMBLED INTO ALL INSERT HOLES. ALL UNUSED GROMMET HOLES MUST BE FILLED WITH THE APPROPRIATE SIZE SEALING PLUG, 10-405996. CONTACTS ARE SHIPPED UNASSEMBLED.

3. INSERT ASSEMBLY IS NOT REMOVABLE.

2. ALTERNATE ROTATIONS ARE OBTAINED BY ROTATING INDICATED KEYS. SIX POSITIONS ARE AVAILABLE. SEE 9-2437-25.

1. FOR CONTACT ARRANGEMENT PATTERN, SEE DRAWINGS L-15206-() THRU L-15250-(). ALTERNATE POSITIONS THEREON DO NOT APPLY.

NOTES:

THE USE OF THIS DOCUMENT IS UNLIMITED. HOWEVER, DOCUMENTS REFERENCED HEREON MAY CONTAIN LIMITED RIGHTS DATA.

14. UNITS ILLUSTRATED MEET THE REQUIREMENTS OF MIL-C-38999.

13. SEE WORK ORDER FOR PERMISSIBLE ADDITIONAL OR ALTERNATE STAMPING.

12. FOR 25-11 INSERT ARRANGEMENT, INDICATED DIMENSION IS 1.447 MAX.

11. FOR SIZE 8 COAX DIMENSION IS .438±.025.

10. BLUE BAND DENOTES REAR RELEASE CONTACT RETENTION SYSTEM.

9. DISTANCE FROM SHOULDER OF SHELL TO THE POINT AT WHICH A GAGE PIN HAVING THE SAME BASIC DIAMETER AS THE MATING CONTACT AND A SQUARE FACE, ENGAGES SOCKET CONTACT SPRING.

8. FOR MATING CONNECTOR, SEE 88-578860/869 AND OTHERS.



SIZE <b>C</b>	FSCM NO. <b>77820</b>	DOCUMENT NO. <b>88-578850/859</b>	REV. <b>J</b>
SCALE: 4.0		REF:	SHEET 2 OF 2

88-578850/859

2 OF 2

A

2

3

4