



Inductive sensors

IGS209

IGKC012-ASKG/M/US

Inductive sensor

Metal thread M18 x 1

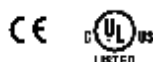
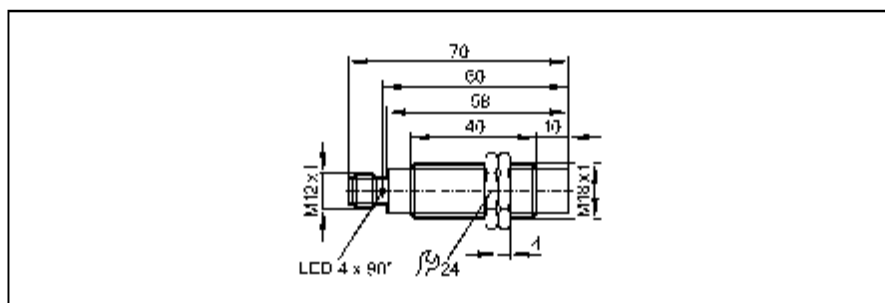
Connector

Operation as 3-wire or 2-wire possible

Increased sensing range

Optical setting aid (2 LED)

gold-plated contacts

Sensing range 12 mm [nf]
non-flush mountable

Made in Germany

Electrical design		3-wire DC PNP; 2-wire DC PNP/NPN	
Output		normally open	
Operating voltage	[V]	10...30 DC	
Current rating	[mA]	100	
Minimum load current	[mA]	2 *)	
Short-circuit protection		pulsed	
Reverse polarity protection		yes	
Overload protection		yes	
Overload protection		yes	
Voltage drop	[V]	< 2.8	
Leakage current	[mA]	< 0.5 *)	
Current consumption	[mA]	< 12 (24 V)	
Real sensing range	[mm]	12 ± 10 %	
Operating distance	[mm]	0...9.7	
Switch-point drift	[% of Sr]	-10...10	
Hysteresis	[% of Sr]	3...15	
Switching frequency	[Hz]	300	
Correction factors		mild steel = 1 / stainless steel approx. 0.7 / brass approx. 0.5 / Al approx. 0.4 / Cu approx. 0.3	
Ambient temperature	[°C]	-25...70	
Protection		IP 67, II	
EMC		EN 61000-4-2 ESD: 4 kV CD / 8 kV AD EN 61000-4-3 HF radiated: 10 V/m (80...1000 MHz) EN 61000-4-4 Burst: 2 kV EN 61000-4-6 HF conducted: 10 V (0.15...80 MHz) EN 55011: class B	
Housing materials		brass white bronze coated; active face: PBT (Pocan)	
Function display			
Switching status	LED	yellow (4 x 90°)	
Setting aid	LED	red	
Connection		M12 connector; gold-plated contacts	
Weight	[kg]	0.054	
Remarks		suitable for PLC type 1 according to IEC 61131-2 *) only in 2-wire operation	
Accessories (included)		2 lock nuts	

Wiring

