



Professionally approved products.

AA Rechargeable Battery Packs

Nickel Cadmium Battery Pack

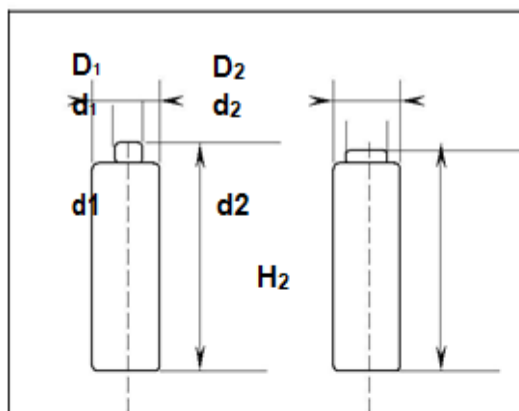


[RS Part No. 544-0188](#)



Professionally approved products.

Dimensions:



Dimension of the cell (mm)

D ₁	Φ14.1±0.3	D ₂	Φ14.1±0.3
d ₁	Φ5.7±0.1	d ₂	Φ8.0±0.1
H ₁	49.5±0.5	H ₂	50.0±0.5

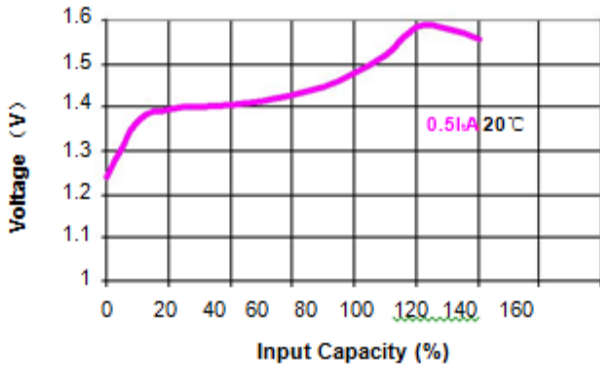
Specification:

		Nominal Capacity ^{*1}	1000 mAh
		Nominal Voltage	1.2 V
Charge current	Standard	100mA	
	Fast	500mA	
Charge time	Standard	16 Hrs	
	Fast	2.4Hrs (- V=2W)	
Ambient Temperature	Charge	Standard	- 20°C ~+40°C
		Fast	10°C ~30°C
	Discharge		-20°C ~50°C
	Storage		-20°C ~30°C
		Internal Impedance (mΩ) ^{*2} (After Charge)	Max≤30
		About weight ^{*2}	22.5g

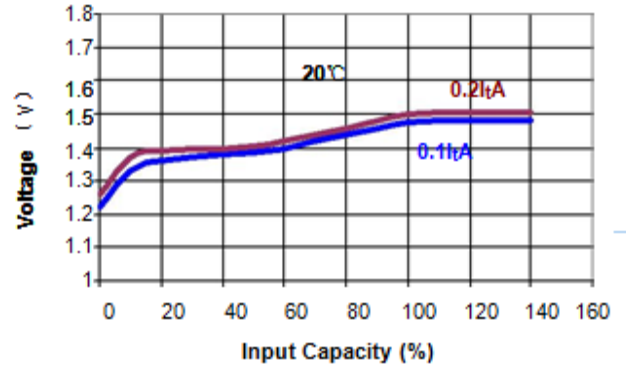


Professionally approved products.

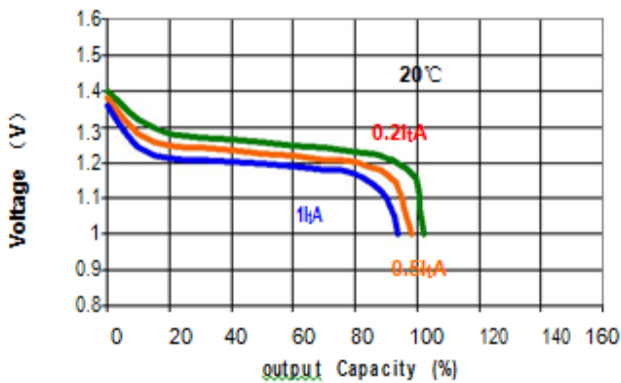
0.5I_tA Rate Charge Curves



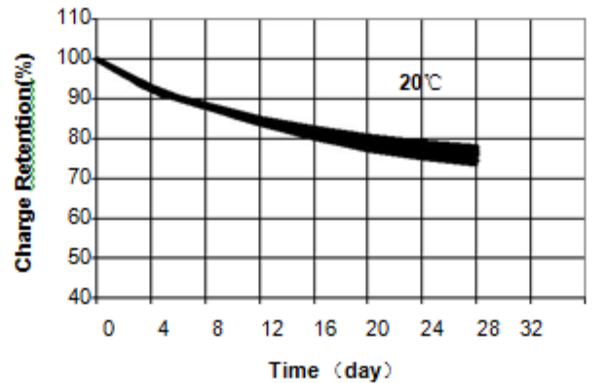
0.2I_tA/0.1I_tA Rate Charge Curves



0.2I_tA/0.5I_tA/1I_tA Rate Discharge Curves



Charge Retention



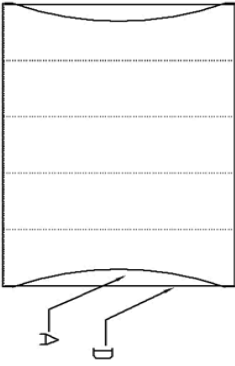
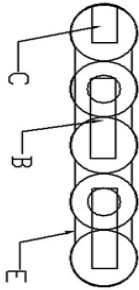
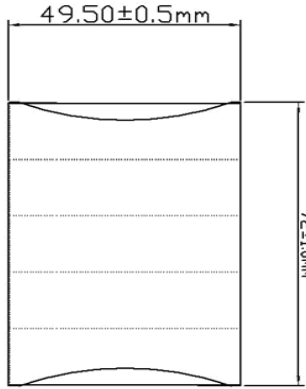
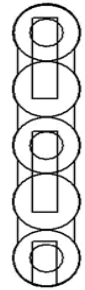
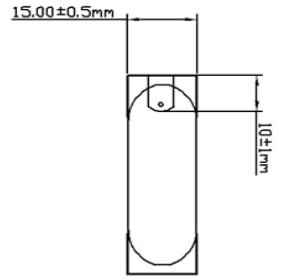
*1 0.2 I_tA (200mA) discharge capacity after charging at .1I_tA(100mA) or 15 hour.

*2 Weight and internal impedance are for reference.

*3 Charge and discharge curves are for reference.



Professionally approved products.



ITEM	Name	Spec.	Quantity
A	Battery	Nexcell NI-CD AA 1.2V 1000mAh	5
B	contact strip	4*17*0.12	4
C	contact strip	5*20*0.20	2
D	single cell seal	PVC: White	5
E	PACK JACKET	PVC: White	1
ELECTROCHEM AUTOMATIONSHANGHAI.DD.LTD			
Drawing No.	5440188 v0	Name	AAX5
Drawing	Linda lin	Check	
date	2009/6/11	date	

