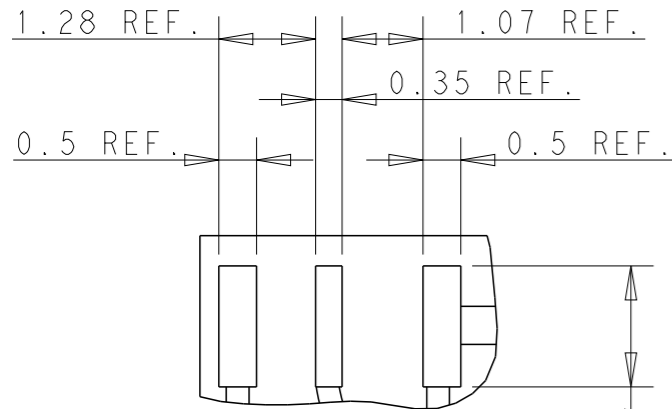
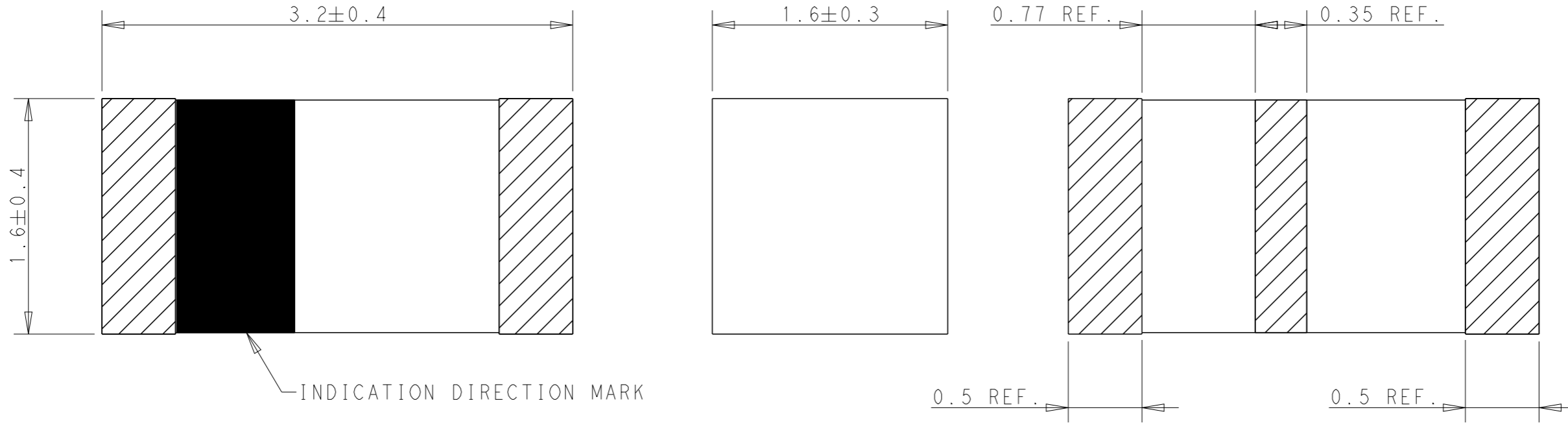


P	LTR	DESCRIPTION	DATE	DWN	APVD
	A	REVISED PER ECN-24-297334	10DEC2024	DW	VK



RECOMMENDED PCB LAYOUT
SCALE 10:1

(3x) 1.6 REF.

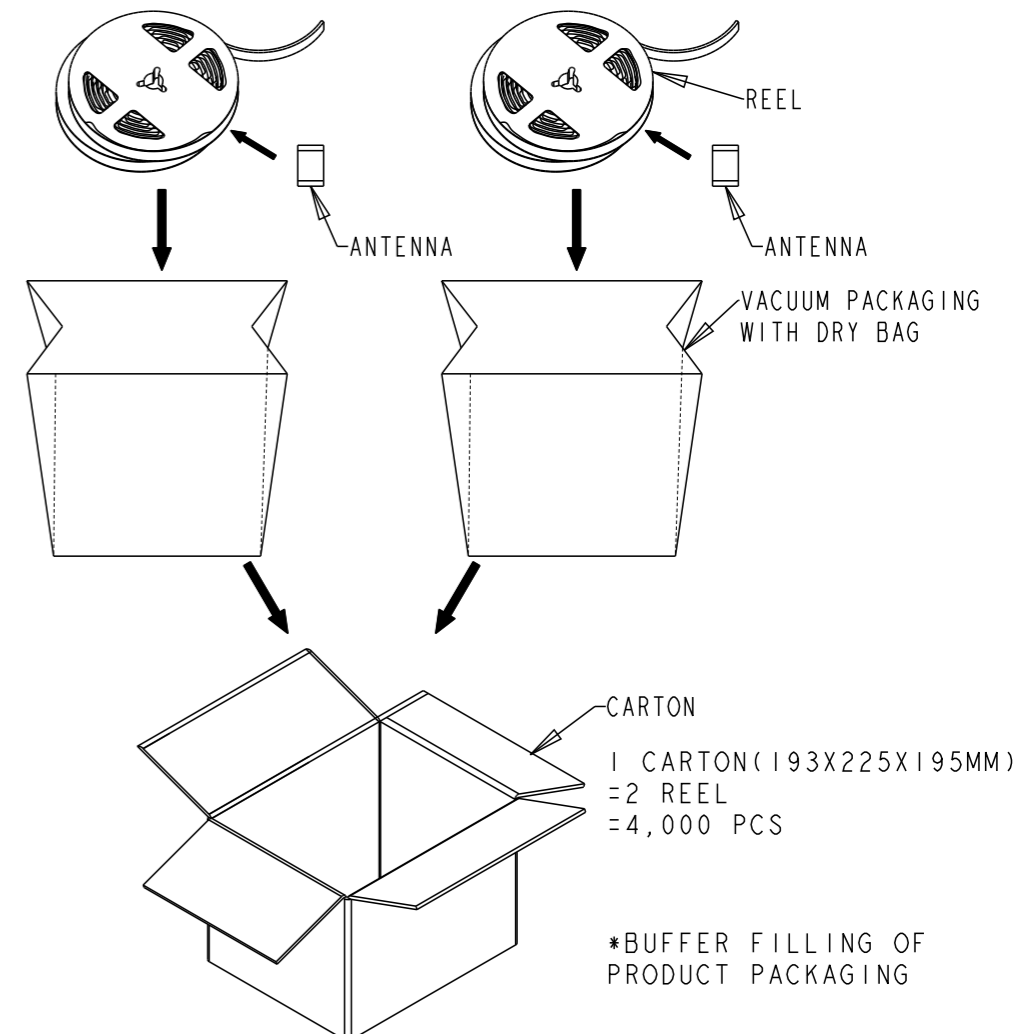
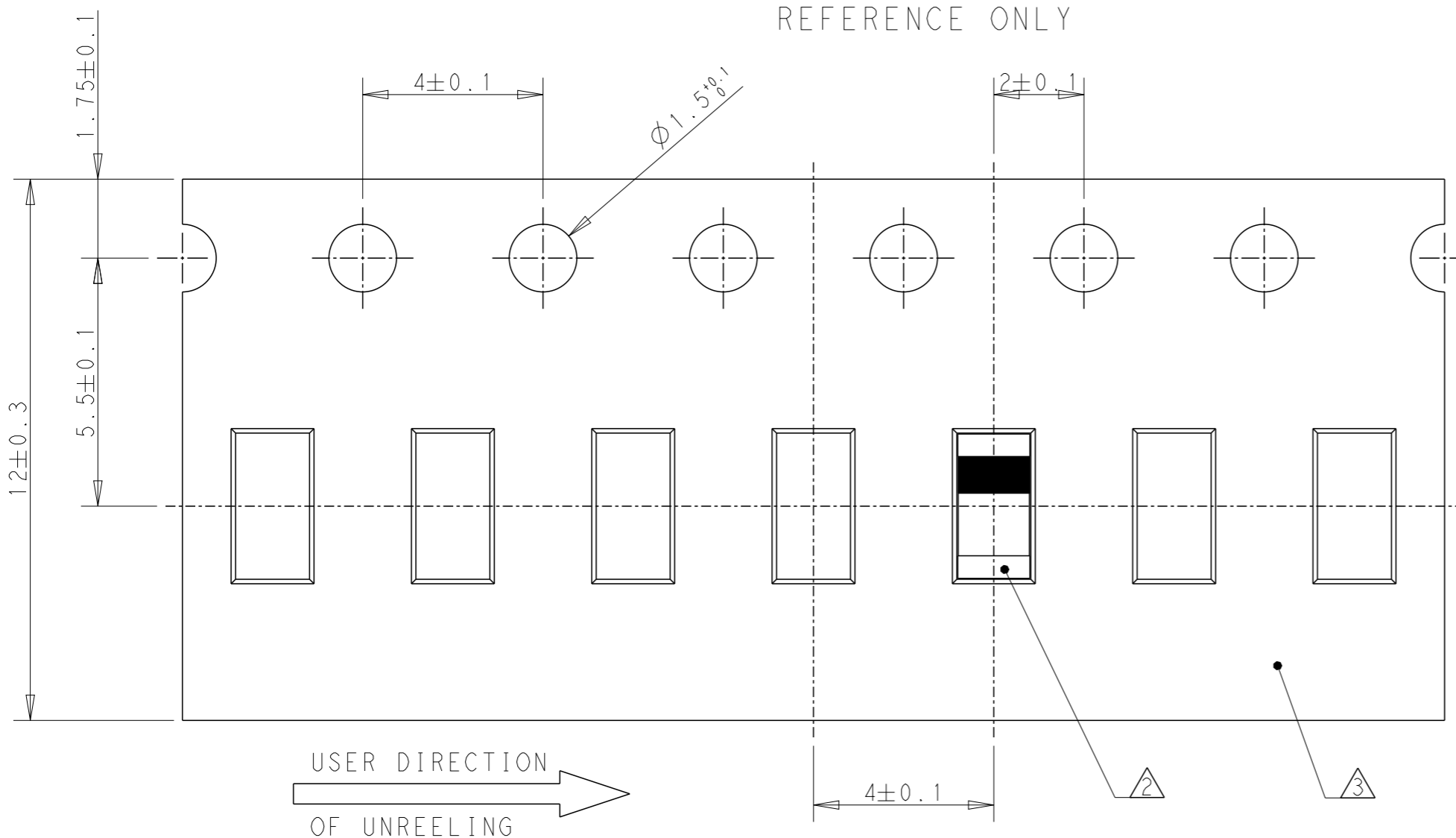
- NOTES: UNLESS OTHERWISE SPECIFIED.
1. MATERIAL : CERAMIC
 2. CONSULT TE CONNECTIVITY DATA SHEET : L000948
 3. CONTACT TE CONNECTIVITY ENGINEERING PRIOR TO DESIGNIN INTO AN APPLICATION.
 4. PACKAGING : TAPE AND REEL PACKAGED, SEE SHEET 2

TAPE AND REELED	L000948-01
PACKAGING	PART NUMBER

THIS DRAWING IS A CONTROLLED DOCUMENT.		DWN DW.PARK	26JUN2024	TE Connectivity NAME Chip Ant, 2.4+5GHz, Dual Wi-fi 3.2x1.6mm			
DIMENSIONS: mm		CHK SJ.NOH	26JUN2024				
		APVD NG.WEITAT	26JUN2024				
		PRODUCT SPEC 108-161641					
TOLERANCES UNLESS OTHERWISE SPECIFIED:		APPLICATION SPEC -		SIZE	CAGE CODE	DRAWING NO	RESTRICTED TO
MATERIAL		WEIGHT		A3	00779	©-L000948	-
FINISH		CUSTOMER DRAWING		SCALE		SHEET	REV
-		-		2:1		1 OF 4	A

AS SHOWN L000948-01
ANTENNA WITH REEL PACKAGING
REFERENCE ONLY

P	LTR	DESCRIPTION	DATE	DWN	APVD
		SEE SHEET 1			



NOTES.

1. UNLESS OTHERWISE SPECIFIED TOLERANCE PER EIA-481-D

2 ORIENT PARTS AS SHOWN.

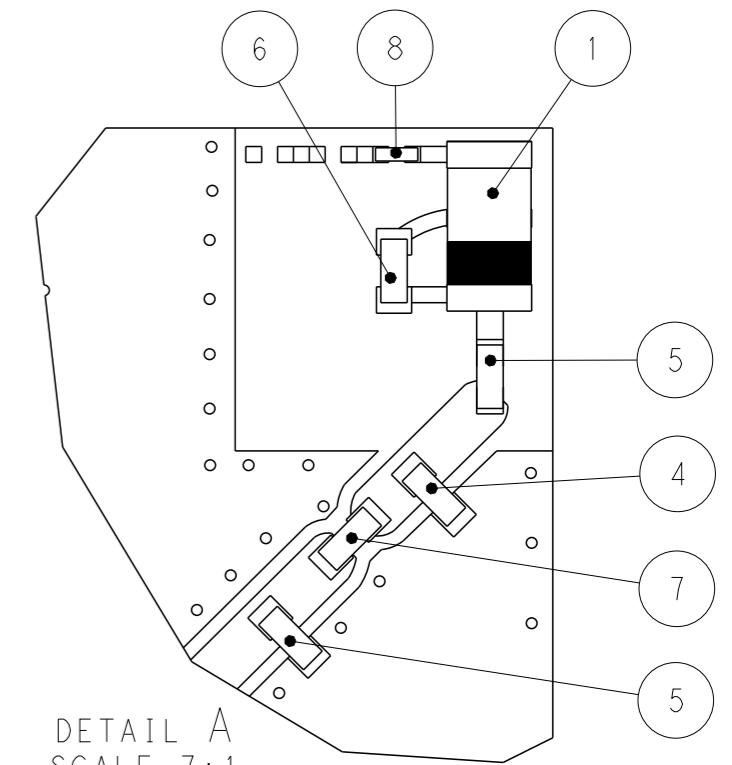
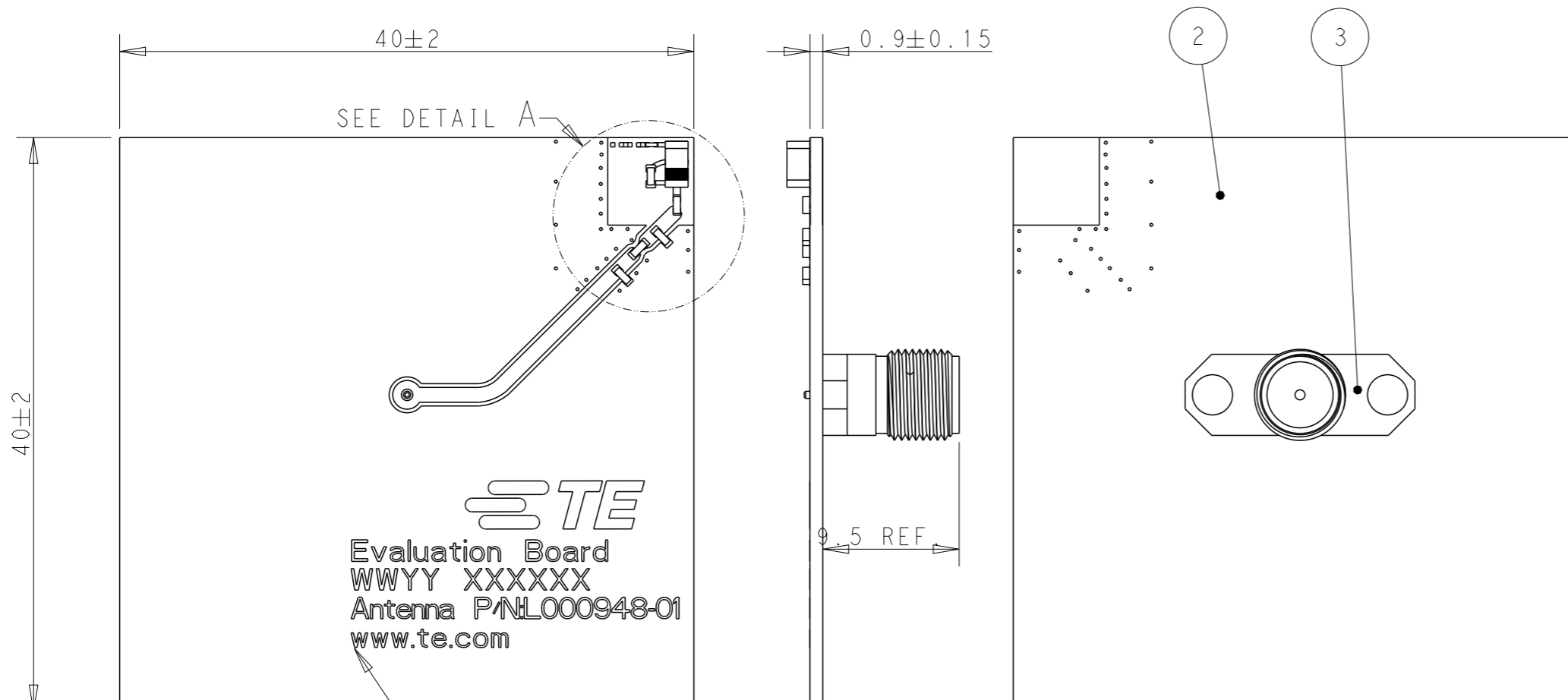
3 MATERIAL : P.S 0.4mm THICKNESS, COLOR : BLACK, CONDUCTIVE
WHEN ALTERNATIVE MATERIAL (PET, P.P) USE, CONSULT ECO PRIOR TO MANUFACTURER.

4. Q'TY/REEL : 2000 PCS/REEL

THIS DRAWING IS A CONTROLLED DOCUMENT.		DWN DW.PARK	26 JUN 2024	TE Connectivity	
DIMENSIONS: mm		CHK SJ.NOH	26 JUN 2024		
TOLERANCES UNLESS OTHERWISE SPECIFIED:		APVD NG.WEITAT	26 JUN 2024	NAME Chip Ant, 2.4+5GHz, Dual Wi-fi 3.2x1.6mm	
0 PLC ±- 1 PLC ±- 2 PLC ±- 3 PLC ±- 4 PLC ±- ANGLES ±-		PRODUCT SPEC -		SIZE A3	
MATERIAL -		APPLICATION SPEC -		CAGE CODE 00779	
FINISH -		WEIGHT -		DRAWING NO L000948	
		CUSTOMER DRAWING		RESTRICTED TO -	
		SCALE 8:1		SHEET 2 OF 4	
				REV A	

P	LTR	DESCRIPTION	DATE	DWN	APVD
		SEE SHEET 1			

ANTENNA WITH EVB ASS'Y



TE
 Evaluation Board
 WWYY XXXXX
 Antenna P/N L000948-01
 www.te.com

DETAIL A
 SCALE 7:1

VACUUM IN BULK		L000948-80
PACKAGING		PART NUMBER
1	RESISTOR(00HM), 0402	8
1	RESISTOR(00HM), 0201	7
1	INDUCTOR(7.9nH), 0402	6
2	INDUCTOR(1.8nH), 0402	5
1	CAPACITOR(0.3pF), 0402	4
1	SMA FEMALE CONNECTOR	3
1	EVB	2
1	L000948-01 ANTENNA	1
Q'TY (PC)	DESCRIPTION	ITEM

NOTES: UNLESS OTHERWISE SPECIFIED.

- 1. MATERIAL : SEE TABLE.
- 2. FINISH : EVB ASSEMBLY WITH SOLDER PROCESS

- 3. SILKSCREEN : WHITE EPOXY INK
 - A. TE LOGO, TE P/N
 - B. WORD REV., FOLLOWED BY THE LATEST REVISION, AS SHOWN/
 - C. 4 DIGITS DATE CODE : FIRST 2 DIGITS FOR THE WEEK CODE AND THE 2ND TWO DIGITS FOR THE YEAR CODE.
 - OTHERS : SPECIFIED TE SOURCE CODE NUMBER DIGITS AS REQUIRED.

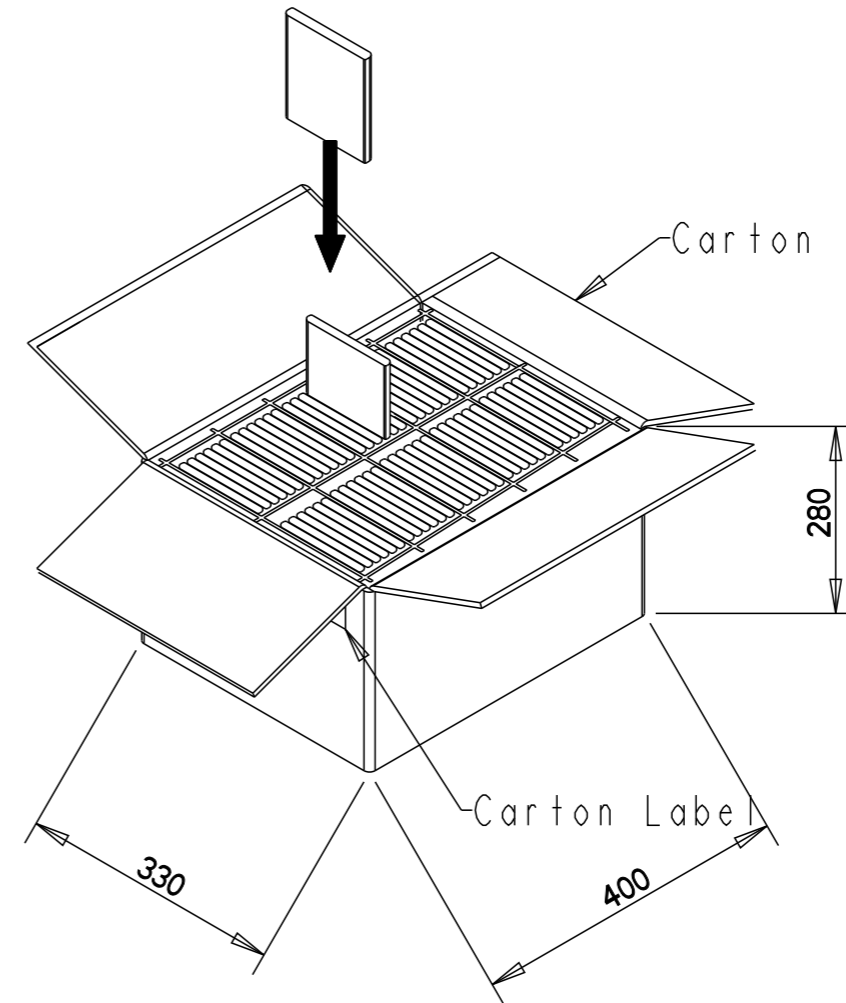
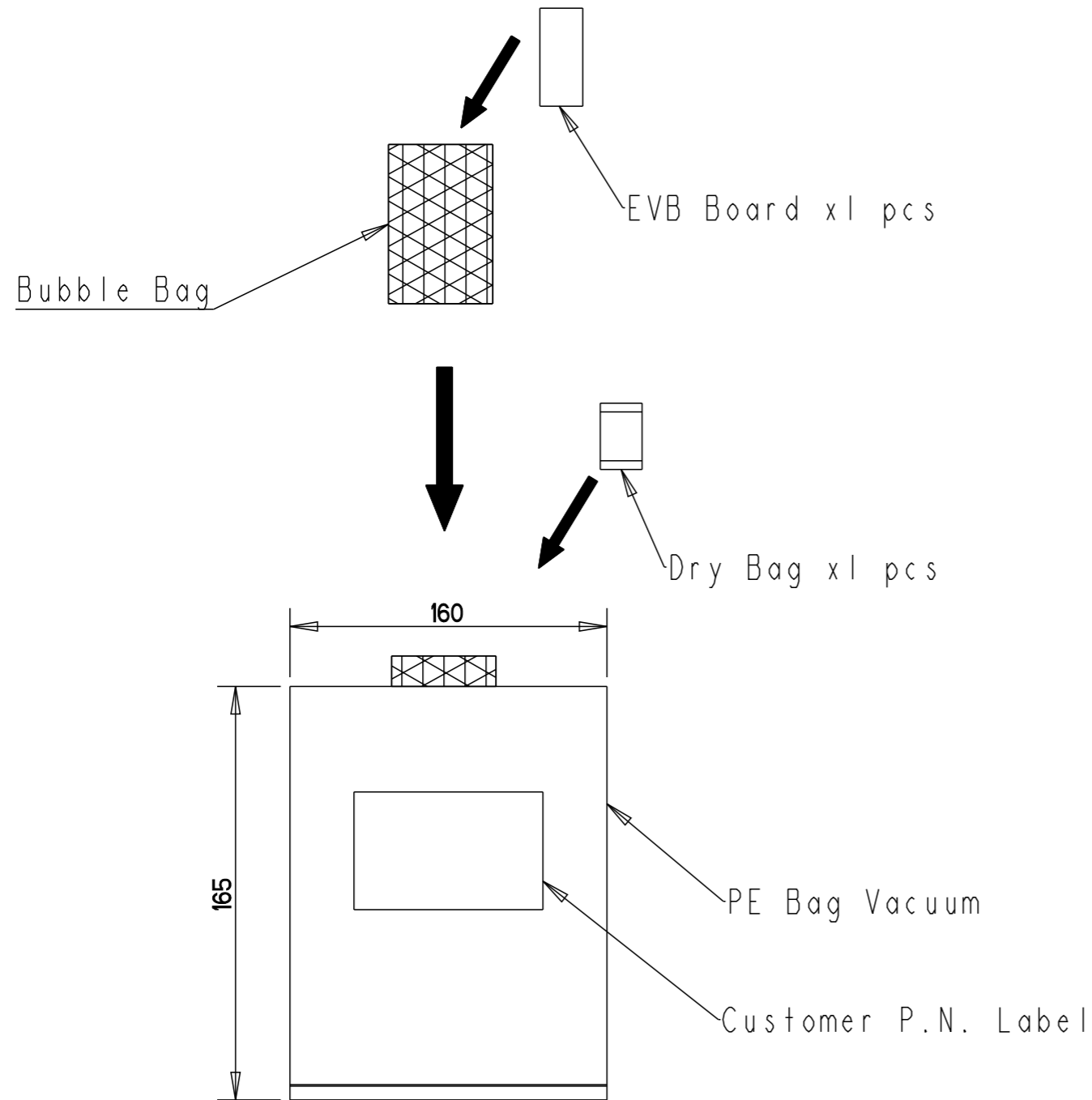
- 4. CONSULTS TE CONNECTIVITY DATA SHEET L000948
- 5. CONTACT TE CONNECTIVITY ENGINEERING PRIOR TO DESIGNING INTO AN APPLICATION.
- 6. PACKAGING: SECURELY VACUUM PACKAGED IN BULK.

THIS DRAWING IS A CONTROLLED DOCUMENT.		DWN DW.PARK 26 JUN 2024	TE Connectivity NAME Chip Ant, 2.4+5GHz, Dual Wi-fi 3.2x1.6mm	
DIMENSIONS: mm		CHK SJ.NOH 26 JUN 2024		
TOLERANCES UNLESS OTHERWISE SPECIFIED:		APVD NG.WEITAT 26 JUN 2024		
0 PLC ±- 1 PLC ±- 2 PLC ±- 3 PLC ±- 4 PLC ±- ANGLES ±-		PRODUCT SPEC -		
MATERIAL		FINISH	APPLICATION SPEC -	SIZE A3
-		-	WEIGHT -	CAGE CODE 00779
-		-	CUSTOMER DRAWING	DRAWING NO L000948
			SCALE 2:1	RESTRICTED TO -
			SHEET 3 OF 4	REV A

REVISIONS

P	LTR	DESCRIPTION	DATE	DWN	APVD
		SEE SHEET 1			

PACKAGING SPECIFICATIONS FOR REFERENCE



1 PE Bag = 1 pc EVB Board

1 Carton = 60 PE Bags = 60 pcs EVB Board

*Buffer Filling Of Product Packaging

THIS DRAWING IS A CONTROLLED DOCUMENT.		DWN DW.PARK 26 JUN 2024														
DIMENSIONS: mm		CHK SJ.NOH 26 JUN 2024														
TOLERANCES UNLESS OTHERWISE SPECIFIED:		APVD NG.WEITAT 26 JUN 2024														
<table border="1"> <tr><td>0 PLC</td><td>±-</td></tr> <tr><td>1 PLC</td><td>±-</td></tr> <tr><td>2 PLC</td><td>±-</td></tr> <tr><td>3 PLC</td><td>±-</td></tr> <tr><td>4 PLC</td><td>±-</td></tr> <tr><td>ANGLES</td><td>±-</td></tr> </table>		0 PLC	±-	1 PLC	±-	2 PLC	±-	3 PLC	±-	4 PLC	±-	ANGLES	±-	NAME Chip Ant, 2.4+5GHz, Dual Wi-fi 3.2x1.6mm	RESTRICTED TO	
0 PLC	±-															
1 PLC	±-															
2 PLC	±-															
3 PLC	±-															
4 PLC	±-															
ANGLES	±-															
MATERIAL -		PRODUCT SPEC -	SIZE A3	CAGE CODE 00779	DRAWING NO C=L000948											
FINISH -		APPLICATION SPEC -	SCALE 2:1		SHEET 4 OF 4											
-		WEIGHT -	CUSTOMER DRAWING		REV A											