

# Customer Information Sheet

DRAWING No.: M22-6013005

SHEET 2 OF 2

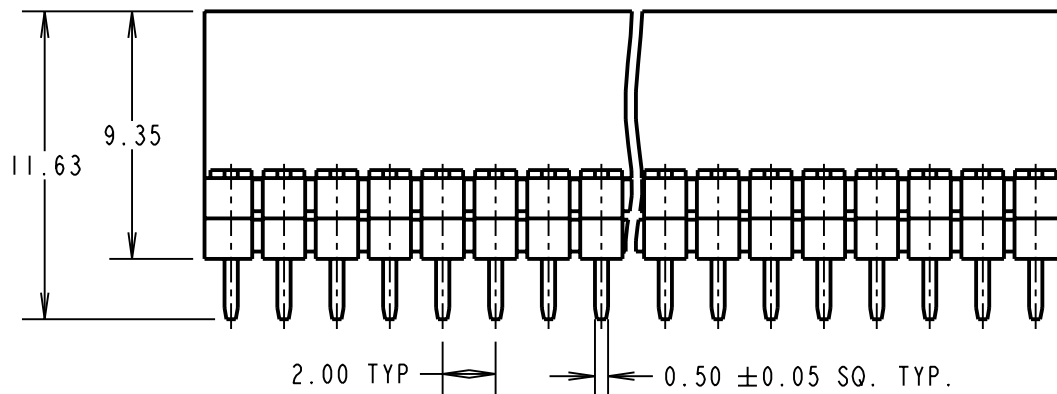
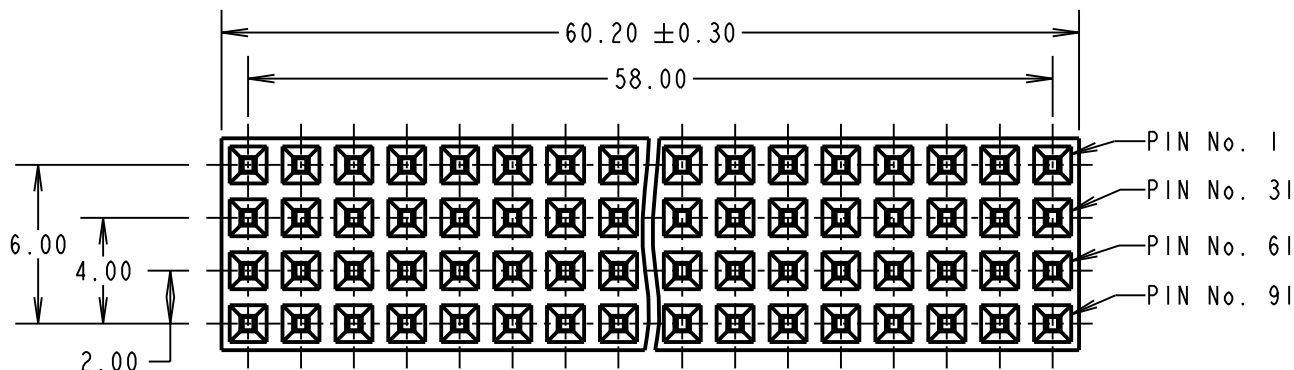
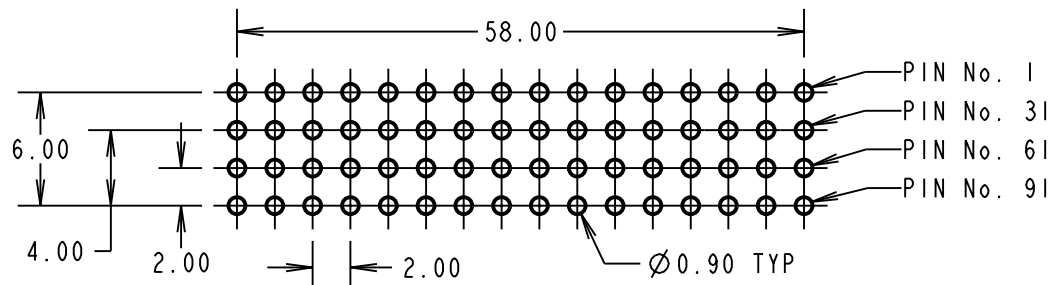
IF IN DOUBT - ASK

(C)

NOT TO SCALE

THIRD ANGLE PROJECTION

ALL DIMENSIONS IN mm



1. ALL TOLERANCES ARE  $\pm 0.20$  UNLESS OTHERWISE STATED.

**SPECIFICATION:**

**MATERIAL:**

MOULDING = NYLON 6T UL94V-0, BLACK  
CONTACTS = PHOSPHOR BRONZE

**FINISH:**

CONTACTS = 0.08 $\mu$  GOLD OVER NICKEL

**ELECTRICAL:**

CURRENT RATING = 1A MAX  
CONTACT RESISTANCE = 30 MILLIOHMS MAX  
INSULATION RESISTANCE = 5,000 MEGOHMS MIN  
VOLTAGE PROOF = 800V AC FOR 1 MINUTE

**MECHANICAL:**

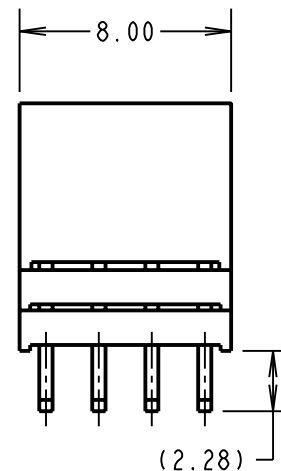
INSERTION FORCE = 2.0N/MAX  
WITHDRAWAL FORCE = 0.3N MIN

**ENVIRONMENTAL:**

TEMPERATURE RANGE = -55°C TO +105°C

**PACKING:**

TUBE



CP	3	04.12.09	10582
NAME	ISS.	DATE	C/NOTE
APPROVED: C.PENROSE			
CHECKED:		R.ADDE	
DRAWN:		D.BECK	
CUSTOMER REF.:			
ASSEMBLY DRG:			

**HARWIN**

HARWIN USA  
TEL: 603 893 5376  
FAX: 603 893 5396  
mis@harwin.com

HARWIN Europe (UK)  
TEL: 023 9231 4545  
FAX: 023 9231 4590  
mis@harwin.co.uk

HARWIN Asia  
TEL: +65 6 779 4909  
FAX: +65 6 779 3868  
mis@harwin.com.sg

THIS DRAWING AND ANY INFORMATION OR DESCRIPTIVE MATTER SET OUT HEREON ARE CONFIDENTIAL AND COPYRIGHT PROPERTY OF THE HARWIN GROUP AND MUST NOT BE DISCLOSED, LOANED, COPIED OR USED FOR MANUFACTURING, TENDERING OR FOR ANY OTHER PURPOSE WITHOUT THEIR WRITTEN PERMISSION.

**TOLERANCES**

X. =  $\pm 1$ mm  
X.X =  $\pm 0.25$ mm  
X.XX =  $\pm 0.10$ mm  
X.XXX =  $\pm 0.01$ mm

ANGLES =  $\pm 5^\circ$   
UNLESS STATED

**MATERIAL:**

Y22-6013005

**FINISH:**

**S/AREA:**

mm<sup>2</sup>

**TITLE:**

PCI04 PLUS CONNECTOR  
(NON-STACKTHROUGH)

**DRAWING NUMBER:**

M22-6013005

**SHT**

2 OF 2