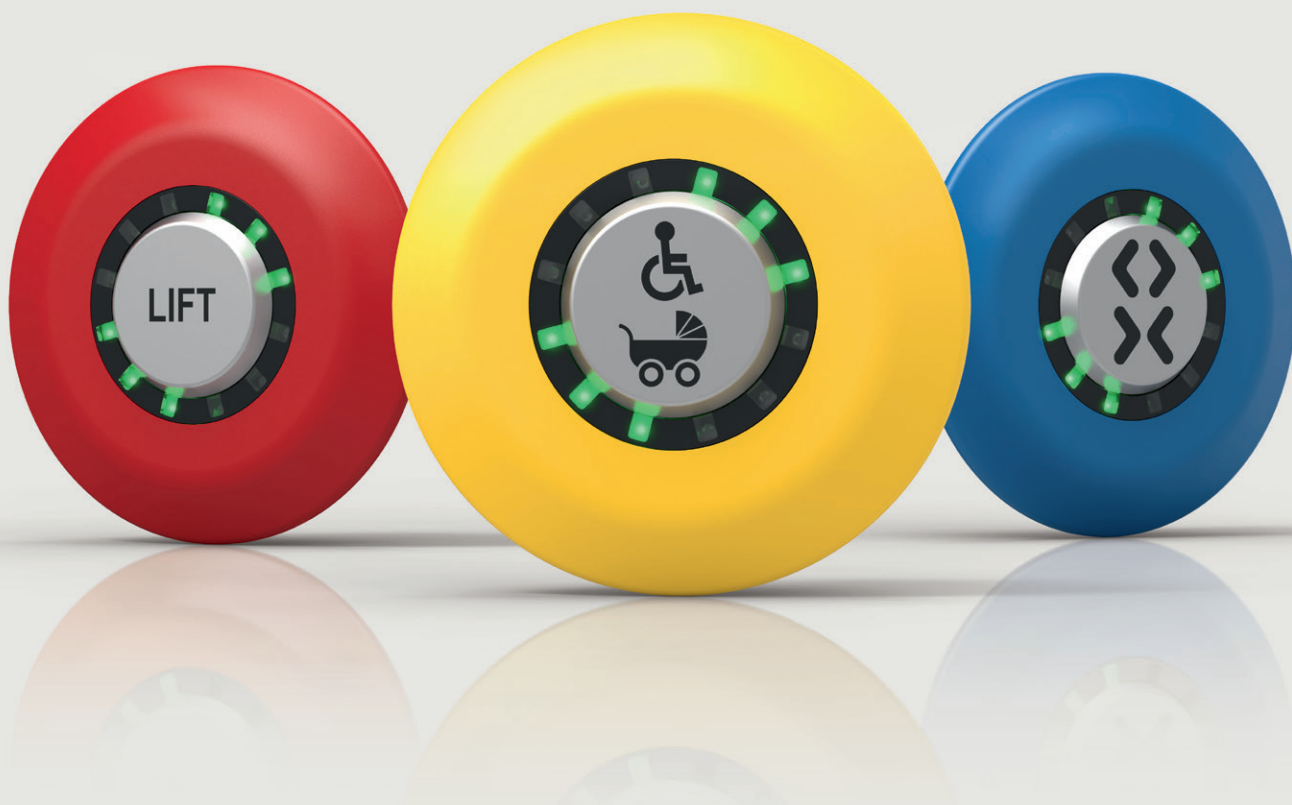


Series
56
Universal.

www.eao.com/56-universal



Series 56 Universal

Intuitive and tactile. Reliable.

The Series 56 Universal Switch combines visual and tactile feedback with a large actuation surface *with clear symbols – for intuitive operation.*

The Series 56 Universal Switch can always be located quickly, thanks to its LED illumination that is clearly visible at all times as well as its large actuation surface, range of colour options for the front bezel and laser engraved symbols. These features, combined with the unmistakable and distinctive click upon operation, ensure that the intuitive button offers an extraordinarily high level of user comfort.

Application examples

- Transit buses and travel coaches
- Technology used in buildings and infrastructure
- Machinery

Standard or customer-specific laser symbols

A wide range of standard, ISO 7000 or customer-specific symbols can be lasered in black onto the grey anodised symbol inserts. This versatility, in combination with the range of colour options for the front bezel, allows an application-specific design to be produced quickly and easily. Lenses without symbols are also available.

Multi-sensory feedback

The pushbutton stands out at first glance thanks to its large actuation surface. The enabled state of the button is signalled by green lighting, which is easily visible even under adverse light conditions. The user receives multi-sensory feedback as soon as the button is pressed. This takes the form of the audible and tactile click that is typical for buttons in the Series 56 product family, as well as a clearly visible red LED in addition to the green illumination.

Plug & play solution with standard M8 connector

Thanks to its standard M8 connector (M8x1, 6-pin) and low mounting depth (27 mm), the Series 56 Universal switch offers easy plug & play installation.

Series 56: Millions in use worldwide

With the Series 56, EAO offers a pushbutton that has been used in millions of applications worldwide and offers an unmistakable, distinctive click when actuated – for an extraordinarily high level of user comfort.

Electrical properties

Operating voltage: 10 – 30 VDC

Front bezel

Front dimensions Ø 87 mm plastic flat, similar to:

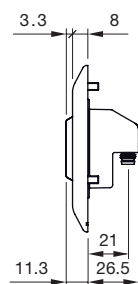
- RAL 9017 black
- RAL 3020 red
- RAL 1023 yellow
- RAL 6024 green
- RAL 5017 blue
- RAL 7040 light grey



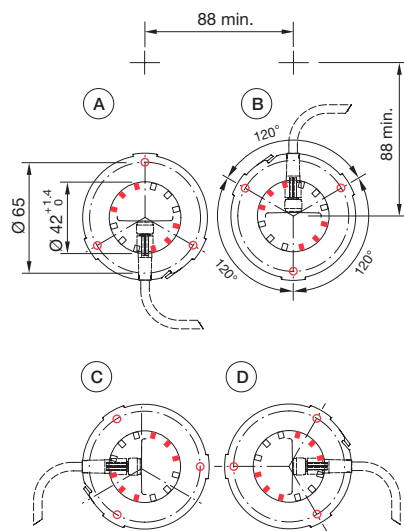
Advantages.

- Intuitive operation thanks to visual and tactile feedback
- Large actuation surface and various front bezel colours
- Low mounting depth (27 mm incl. M8x1 standard connector)
- Long, reliable service life (> 5 million cycles of operation)
- Standard, ISO 7000 or customer-specific laser symbols

Dimensions



Mounting cut-outs



- A = Cable exit bottom
- B = Cable exit top
- C = Cable exit left
- D = Cable exit right

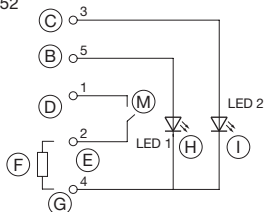
Component layout



Pin assignment front view
M8 connector A-coding 6-pin
according to EN 61076-2-104

Wiring diagram

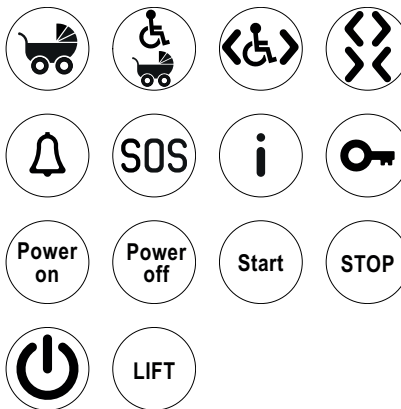
VDC = 10 – 30VDC
EN 14752



Legend

- B = VDC illumination green
- C = VDC illumination red
- D = VDC
- E = Switch (not potential-free)
- F = Load (max. 250mA)
- G = 0V
- H = Illumination green
- I = Illumination red
- M = High Side Switch

Standard symbols



Further information is available at
www.eao.com/56-universal

All dimensions in mm.

Transit buses and travel coaches – interior and exterior.



Intuitive, accessible operability on transit buses and travel coaches is crucial for passengers with disabilities.

It must be possible to locate HMIs immediately under all environmental conditions and in poor lighting. Visual and tactile feedback also increases ease of use. For example, pressing the wheelchair button opens the bus doors for a longer period of time, aiding passengers with disabilities to use a ramp while boarding and alighting. This also makes it easier to board the bus with a pram or bicycle.

Other applications, such as the stop request button or activating a water tap faucet in the toilet of a travel coach, benefit similarly from intuitive operation. At the same time,

an HMI must consistently fulfil all the requirements of bus manufacturers and operators – low back panel depths and long service life, as well as simple product specifications and attractive total costs of ownership (TCO).



Intuitive, reliable technology used in buildings and infrastructure.



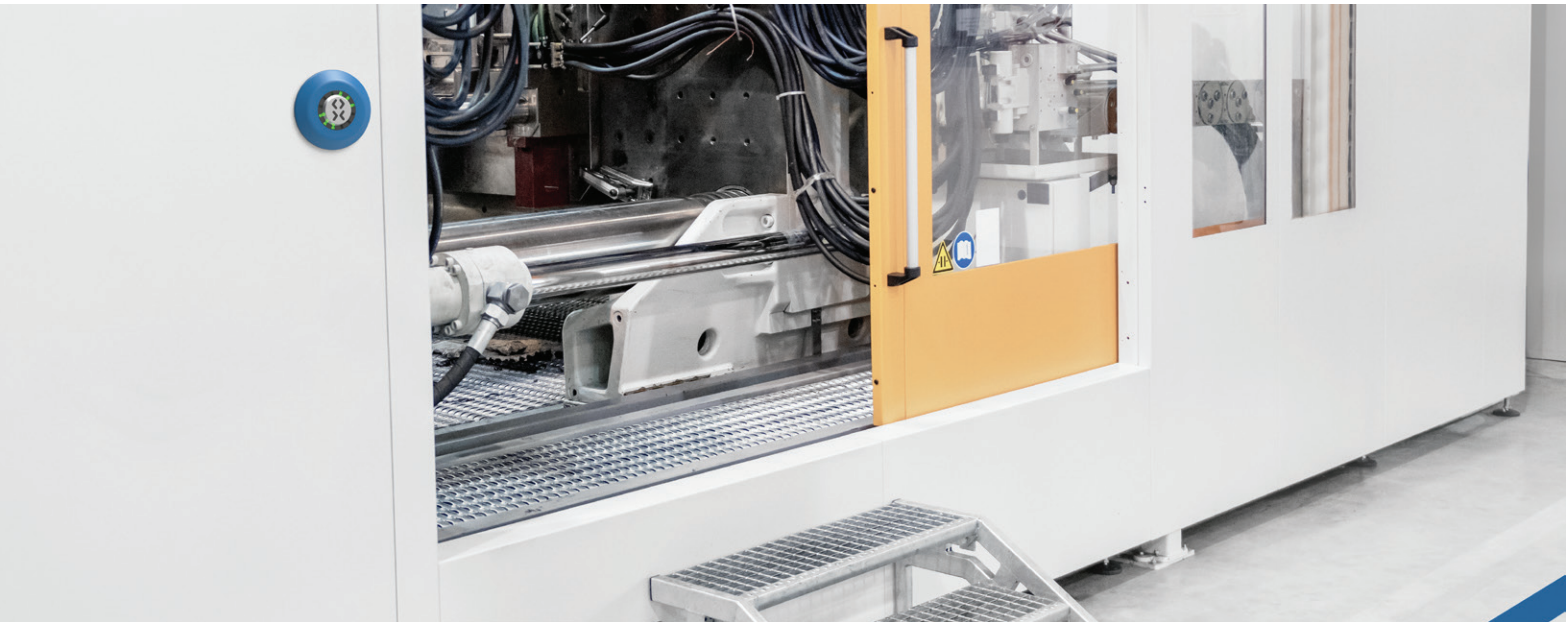
When it comes to applications in buildings, the requirements for switches and indicators are stringent.

In addition to being easily visible and intuitive to use, reliable functionality is essential for building technology HMIs. Visual and tactile feedback also increases ease of use. The operation of electric doors in goods and passenger lifts is a prime example of applications for which use should be intuitive and tactile feedback should be provided. Users depend on easily recognisable function controls as found within alarm bells, ventilation controls and electric doors. Clearly identifiable symbols are of central importance for all of these applications.

At the same time, an HMI must consistently fulfil all the requirements of architects and construction companies, as well as those associated with building maintenance – from low back panel depth and long service life to simple product specifications and attractive total costs of ownership (TCO).



Safe machine operation.



It must be possible to safely control machines at all times – for reliable protection against injury to people and damage to the equipment.

Electronic doors and closing units on all types of industrial machines are examples of control operations that should acknowledge actuation with tactile feedback of switching functions. The switching on and off of main or ancillary functions on the system also requires a very high level of operational safety. Clearly identifiable and intuitive symbols are essential for these uses, as are tactile and visual feedback.

At the same time, an HMI must consistently meet all the requirements of mechanical engineers – from a low back panel depth and long service life, to simple product specifications and attractive total costs of ownership (TCO).



Visit our website.

EAO.COM

EAO, the expert partner for Human Machine Interfaces (HMIs), offers a variety of innovative, intuitive and reliable HMI Products and Services.

Online product configurator

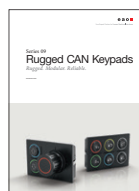
Build your tailored product in the online product configuration system and obtain technical specifications and 3D data at the same time. The right HMI for you, step by step: eao.com/products

EAO downloads

Find more extensive documents such as catalogues, data sheets, certificates and brochures to read and use for research: eao.com/downloads

Related documents

Find out more about our innovative, intuitive and reliable HMI Products and Solutions.



Series 09
Brochure



Series 14
Brochure



Series 45
Brochure



Series 61
Brochure



Series 82
Brochure

EAO Contact.

Your centre of excellence.

Headquarters

EAO Holding AG
Tannwaldstrasse 88
CH-4600 Olten
Telephone +41 62 286 92 00
info@eao.com

Manufacturing Companies

Switzerland
EAO AG
Tannwaldstrasse 88
CH-4600 Olten
Telephone +41 62 286 91 11
info@eao.com

EAO Systems AG
Tannwaldstrasse 88
CH-4600 Olten
Telephone +41 62 286 91 11
sales.esy@eao.com

China
EAO (Guangzhou) Ltd.
3/F, Block G4, South China
New Materials Innovation Park
31 Kefeng Road
Guangzhou Science City
CN-Guangzhou, PRC
Telephone +86 20 3229 0390
sales.ecn@eao.com

Germany
EAO Automotive GmbH & Co. KG
Richard-Wagner-Straße 3
DE-08209 Auerbach/Vogtland
Telephone +49 3744 8264 0
sales.esa@eao.com

North America
EAO Corporation
One Parrott Drive
Shelton
US-CT 06484
Telephone +1 203 951 4600
sales.eus@eao.com

Sales Companies

China
EAO (Guangzhou) Ltd.
3/F, Block G4, South China
New Materials Innovation Park
31 Kefeng Road
Guangzhou Science City
CN-Guangzhou, PRC
Telephone +86 20 3229 0390
sales.ecn@eao.com

EAO (Shanghai) Office
Rm.401, Lihpao Plaze,
NO.159 Shenwu Road,
Minhang District,
CN-Shanghai, 201106.
PRC
Telephone +86 21 6095 0717
sales.ecn@eao.com

France
EAO France SAS
Nextdoor – Bâtiment Silex
15 rue des Cuirassiers
CS 33821
FR-69487 Lyon Cedex O3
Telephone +33 9 74 18 93 41
sales.efr@eao.com

**Germany, Austria, Czech Republic,
Poland, Slovakia**
EAO GmbH
Langenberger Straße 570
DE-45277 Essen
Telephone +49 201 8587 0
sales.ede@eao.com

Hong Kong (Asia Pacific)
EAO (Far East) Ltd.
Unit A1, 1/F, Block A
Tin On Industrial Building
777 Cheung Sha Wan Road
Lai Chi Kok, Kln
HK-Hong Kong
Telephone +852 27 86 91 41
sales.ehk@eao.com

Italy
EAO Italia S.r.l.
Centro Direzionale Summit –
Palazzo D1
Via Brescia 28
IT-20063 Cernusco sul Naviglio (MI)
Telephone +39 029 247 0722
sales.eit@eao.com

Japan
EAO Japan Co. Ltd.
Net 1 Mita Bldg. 3F
3-1-4 Mita Minato-ku
JP-Tokyo 108-0073
Telephone +81 3 5444 5411
sales.ejp@eao.com

Netherlands, Belgium
EAO Benelux B.V.
Kamerlingh Onnesweg 46
NL-3316 GL Dordrecht
Telephone +31 78 653 17 00
sales.enl@eao.com

North America
EAO Corporation
One Parrott Drive
Shelton
US-CT 06484
Telephone +1 203 951 4600
sales.eus@eao.com

Switzerland
EAO Schweiz AG
Tannwaldstrasse 86
CH-4600 Olten
Telephone +41 62 286 95 00
sales.ech@eao.com

**United Kingdom, Denmark,
Finland, Ireland, Norway, Sweden**
EAO Ltd.
Highland House
Albert Drive
Burgess Hill
GB-West Sussex RH15 9TN
Telephone +44 1444 236 000
sales.euk@eao.com