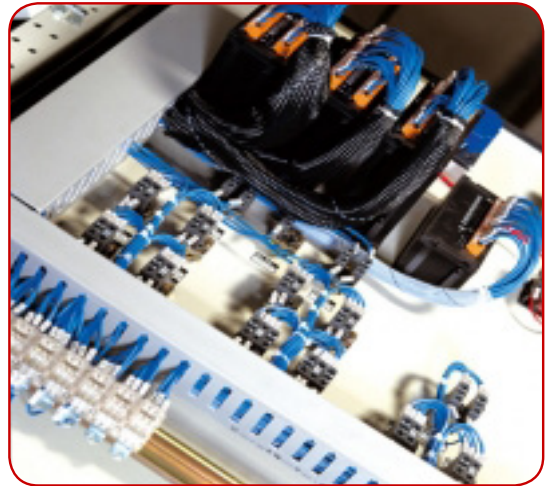
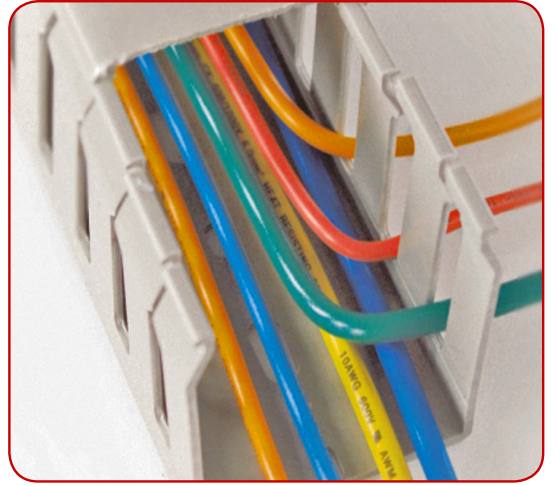


www.betaduct.co.uk

About Betaduct Ltd

Betaduct Ltd, situated in Tewkesbury, Gloucestershire, is the manufacturing base for the world-renowned Betaduct PVC and LFH control panel trunking, which has been in production for over 40 years. In 2009, Betaduct became part of Cablecraft Ltd and, since then, have successfully launched two new products; grey Halogen-Free trunking and by special request blue Halogen-Free trunking. Further products are planned for the future to widen the Betaduct range.

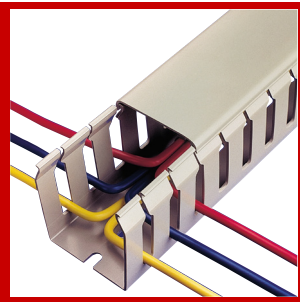
In addition to our own Betaduct products, we offer the complete range of Iboco cable management products, for which we are the sole UK importer. Our portfolio comprises of Betaduct PVC and Halogen-Free trunking, Noryl Halogen-Free trunking, Iboco metric trunking, as well as Betaduct preparation tools and accessories. Our products are available worldwide, including Australia, New Zealand, North America, Sweden, Italy and Poland. In addition we are constantly breaking into new markets throughout Europe and the Middle East.



Betaduct PVC Trunking

2-12

Betaduct PVC is an extensive range of PVC ducting, which includes open slot, narrow slot, closed slot and solid wall types.



Betaduct Halogen-Free Trunking

14-16

Manufactured in the UK from Noryl NH5110E. It is available in grey open slot and grey or blue narrow slot types.



Betaduct Noryl Trunking

18-20

Betaduct Noryl is manufactured from high grade LS175 Noryl. Available in open slot, closed slot or solid wall, in a wide range of sizes with 19mm pitching.



Betaduct Iboco

22-32

Iboco wiring systems feature excellent assembly functionality and are ideal for any type of power and control panel suitable for heavy operating conditions.



Betaduct Preparation Tools

34-37

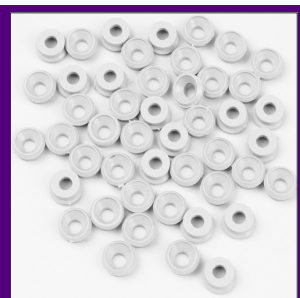
A complete range of preparation tools are available for use with the Betaduct & IBOCO ranges of trunking to facilitate easy installation.

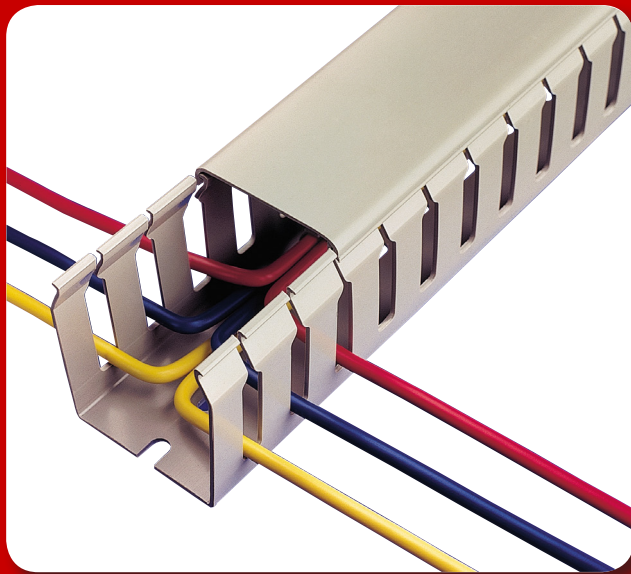


Betaduct Accessories

39-40

A range of Betaduct accessories are also available, including Lids, Dividers, Rivets, Riveter, Side Cutters and Washers.





Betaduct PVC

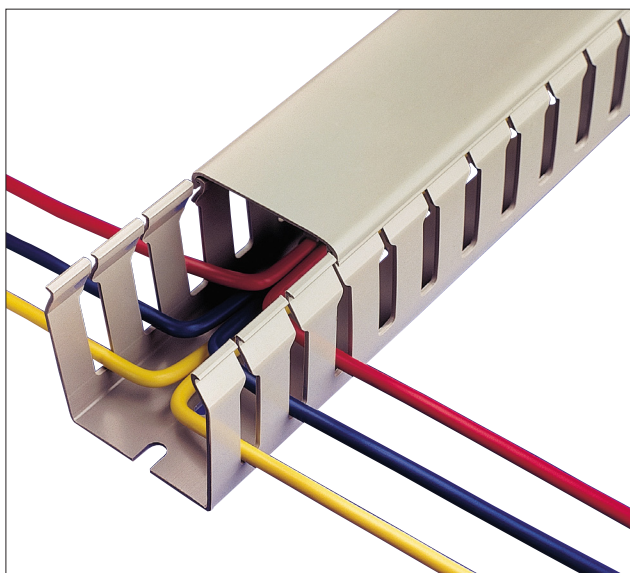
Grey Open Slot	2
Black Open Slot	3
Blue Open Slot	4
Open Slot - Mini Packs	5
Grey Closed Slot	6
Black Closed Slot	7
Closed Slot - Mini Packs	8
Grey Narrow Slot	9
Black Narrow Slot	10
Grey Solid Wall	11
Black Solid Wall	12

DESCRIPTION

Open Slot PVC Betaduct provides a lightweight self-extinguishing cable trunking with excellent rigidity and performance characteristics. Wide fingers give additional cable support and terminated wires can be re-routed easily. Available with 20mm slot pitch, 8mm slot width in 23 sizes. Recommended fixing method; Betaduct rivets and washers.

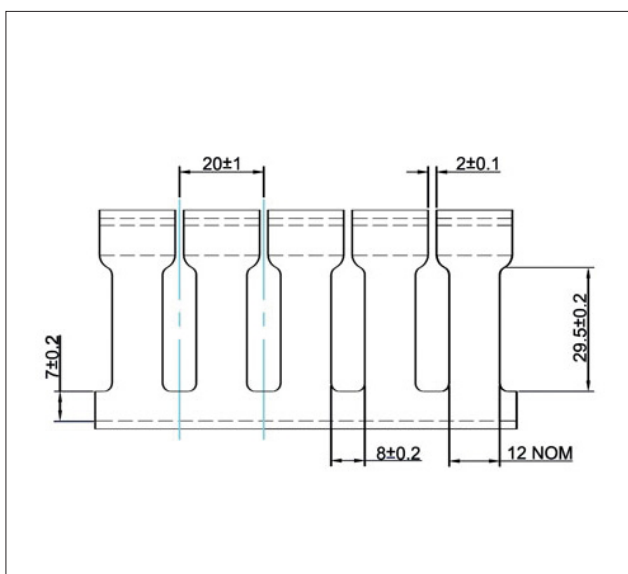
APPLICATION

For use when bundles, cables and wires need supporting in control panels, distribution boards and switchgear. Ideal for all panel building applications.



SPECIFICATION

- Material:** Self-extinguishing PVC
- Colour Options:** Grey RAL 7030
- Service Temperature Range:** -15°C to +60°C
- Flammability:** UL94 V-O Rated Material
- Standards:** Base Slots to DIN 43659.
RoHS, CSA, UL and Lloyds Register Approved.



PART NUMBERS & SIZES

PART NO: GREY OPEN SLOT	NOMINAL SIZE INNER (WxH) mm	NOMINAL SIZE OUTER (WxH) mm	PACK QTY (METRES)
10450018	19 x 50	25 x 53	24
10450022	25 x 37.5	29 x 41	24
10450023	25 x 50	29 x 54	24
10450024	25 x 75	29 x 79	16
10450025	25 x 100	30 x 105	16
10450032	37.5 x 37.5	41 x 41	24
10450033	37.5 x 50	41 x 54	16
10450034	37.5 x 75	39 x 79	16
10450035	37.5 x 100	43 x 105	16
10450051	50 x 25	54 x 28	24
10450052	50 x 37.5	54 x 41	16
10450053	50 x 50	54 x 54	16
10450054	50 x 75	55 x 79	16
10450055	50 x 100	56 x 105	8
10450072	75 x 37.5	80 x 41	16
10450073	75 x 50	78 x 54	16
10450074	75 x 75	80 x 80	16
10450075	75 x 100	80 x 105	8
10450103	100 x 50	107 x 54	8
10450104	100 x 75	107 x 80	8
10450105	100 x 100	107 x 104	8
10450106	100 x 125	107 x 130	8
10450124	125 x 75	131 x 78	8

DESCRIPTION

Open Slot PVC Betaduct provides a lightweight self-extinguishing cable trunking with excellent rigidity and performance characteristics. Wide fingers give additional cable support and terminated wires can be re-routed easily. Available with 20mm slot pitch, 8mm slot width in 23 sizes. Recommended fixing method; Betaduct rivets and washers.

APPLICATION

For use when bundles, cables and wires need supporting in control panels, distribution boards and switchgear. Ideal for all panel building applications.

SPECIFICATION

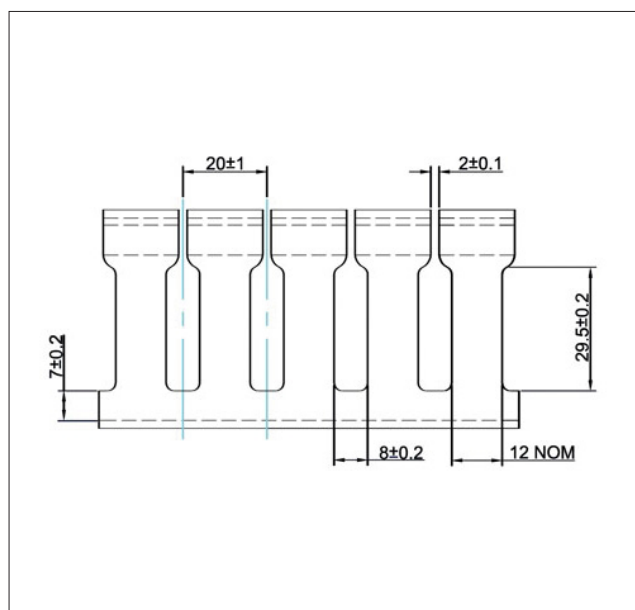
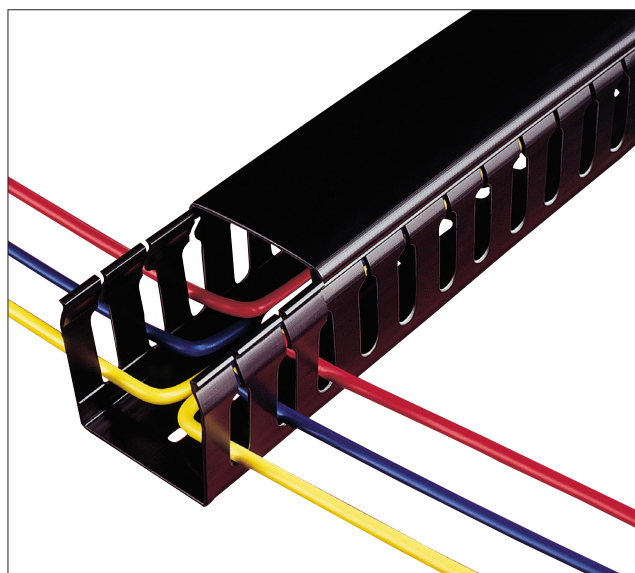
Material: Self-extinguishing PVC

Colour Options: Black

Service Temperature Range: -15°C to +60°C

Flammability: UL94 V-O Rated Material

Standards: Base Slots to DIN 43659.
RoHS, CSA, UL and Lloyds Register Approved.



PART NUMBERS & SIZES

PART NO: BLACK OPEN SLOT	NOMINAL SIZE INNER (WxH) mm	NOMINAL SIZE OUTER (WxH) mm	PACK QTY (METRES)
0980	19 x 50	25 x 53	24
0981	25 x 37.5	29 x 41	24
0913	25 x 50	29 x 54	24
0914	25 x 75	29 x 79	16
0983	25 x 100	30 x 105	16
0984	37.5 x 37.5	41 x 41	24
0985	37.5 x 50	41 x 54	16
0986	37.5 x 75	39 x 79	16
0987	37.5 x 100	43 x 105	16
0988	50 x 25	54 x 28	24
0989	50 x 37.5	54 x 41	16
0916	50 x 50	54 x 54	16
0917	50 x 75	55 x 79	16
0992	50 x 100	56 x 105	8
0993	75 x 37.5	80 x 41	16
0994	75 x 50	78 x 54	16
0919	75 x 75	80 x 80	16
0996	75 x 100	80 x 105	8
0998	100 x 50	107 x 54	8
0999	100 x 75	107 x 80	8
1000	100 x 100	107 x 104	8
1001	100 x 125	107 x 130	8
0941	125 x 75	131 x 78	8

DESCRIPTION

Open Slot PVC Betaduct provides a lightweight self-extinguishing cable trunking with excellent rigidity and performance characteristics. Wide fingers give additional cable support and terminated wires can be re-routed easily. Available with 20mm slot pitch, 8mm slot width in 13 sizes. Recommended fixing method; Betaduct rivets and washers.

APPLICATION

For use when bundles, cables and wires need supporting in control panels, distribution boards and switchgear. Ideal for all panel building applications.

SPECIFICATION

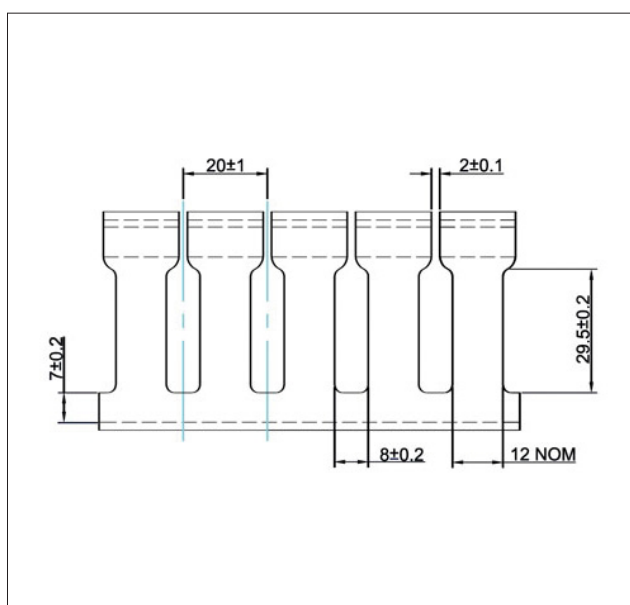
Material: Self-extinguishing PVC

Colour Options: Blue

Service Temperature Range: -15°C to +60°C

Flammability: UL94 V-O Rated Material

Standards: Base Slots to DIN 43659.
RoHS, CSA, UL and Lloyds Register Approved.



PART NUMBERS & SIZES

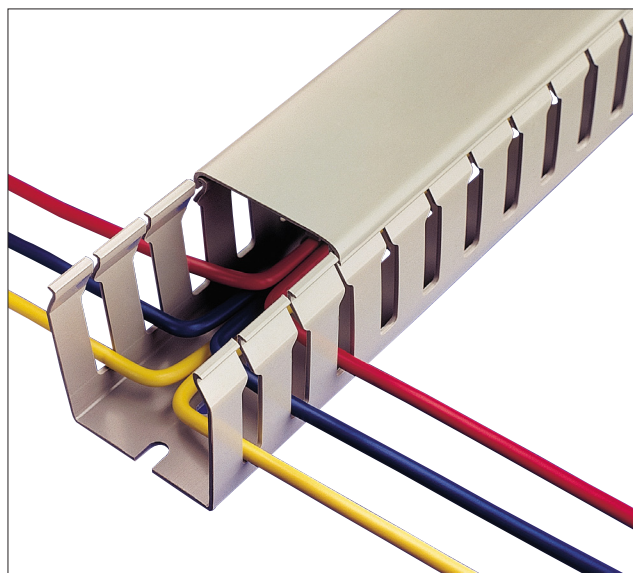
PART NO. BLUE OPEN SLOT	NOMINAL SIZE INNER (WxH) mm	NOMINAL SIZE OUTER (WxH) mm	PACK QTY (METRES)
09136	25 x 50	29 x 54	24
09146	25 x 75	29 x 79	16
09836	25 x 100	30 x 105	16
09856	37.5 x 50	41 x 54	16
09866	37.5 x 75	39 x 79	16
09876	37.5 x 100	37.5 x 100	16
09166	50 x 50	54 x 54	16
09176	50 x 75	55 x 79	16
09926	50 x 100	56 x 105	8
09196	75 x 75	80 x 80	16
09966	75 x 100	80 x 105	8
09996	100 x 75	107 x 80	8
1006	100 x 100	107 x 104	8

DESCRIPTION

Open Slot PVC Betaduct provides a lightweight self-extinguishing cable trunking with excellent rigidity and performance characteristics. Wide fingers give additional cable support and terminated wires can be re-routed easily. Supplied in handy mini packs containing 4 x 1 metre packs. Recommended fixing method; Betaduct rivets and washers.

APPLICATION

For use when bundles, cables and wires need supporting in control panels, distribution boards and switchgear. Ideal for all panel building applications.



SPECIFICATION

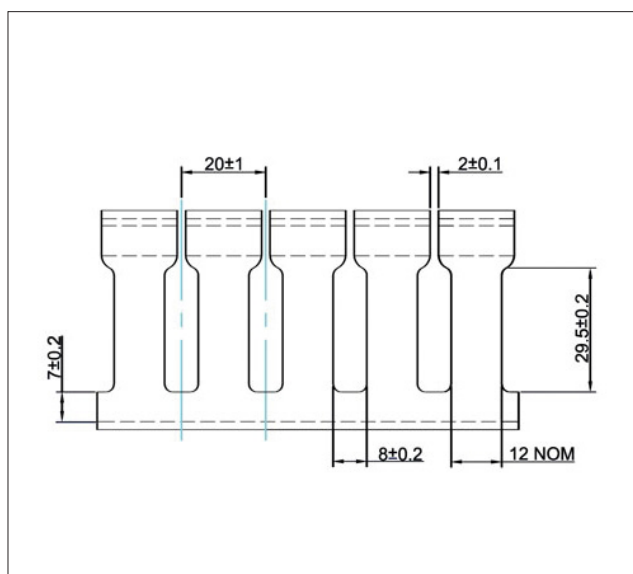
Material: Self-extinguishing PVC

Colour Options: Grey or Black

Service Temperature Range: -15°C to +60°C

Flammability: UL94 V-O Rated Material

Standards: Base Slots to DIN 43659.
RoHS, CSA, UL and Lloyds Register Approved.



PART NUMBERS & SIZES

PART NO:	COLOUR	NOMINAL SIZE INNER (WxH) mm	NOMINAL SIZE OUTER (WxH) mm	QTY
08862000	Black	25 x 37.5	29 x 41	4 x 1m
08872000	Black	25 x 50	29 x 54	4 x 1m
08882000	Black	50 x 50	54 x 54	4 x 1m
10452022	Grey	25 x 37.5	29 x 41	4 x 1m
10452023	Grey	25 x 50	29 x 54	4 x 1m
10452051	Grey	50 x 25	54 x 28	4 x 1m
10452053	Grey	50 x 50	54 x 54	4 x 1m

DESCRIPTION

Closed slot PVC Betaduct provides a lightweight self extinguishing cable trunking with excellent rigidity and performance characteristics. It has excellent cable retention with enhanced protection for installers. It is provided in 25 sizes with 20mm slot pitching. Recommended fixing method; Betaduct rivets and washers.

APPLICATION

For use when bundles, cables and wires need supporting in control panels, distribution boards and switchgear. Ideal for all panel building applications.

SPECIFICATION

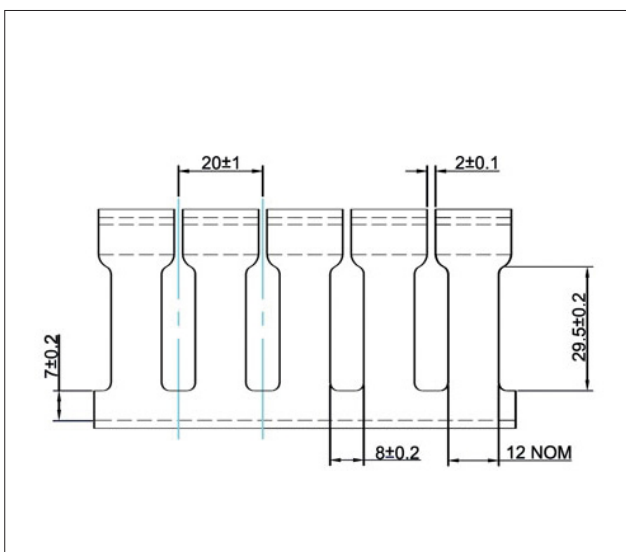
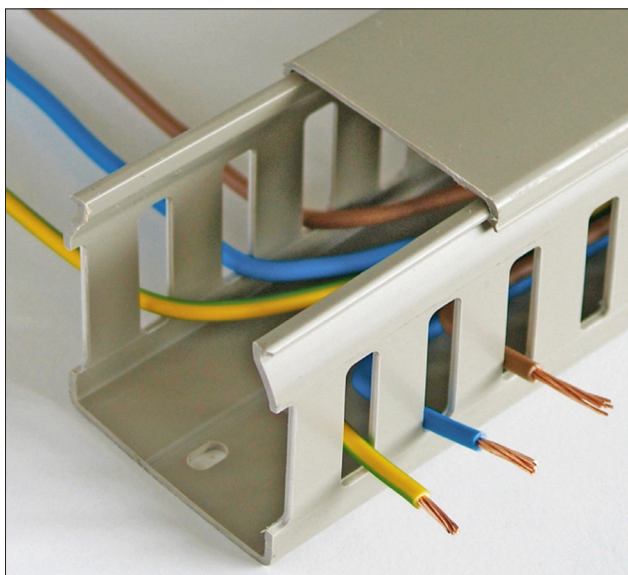
Material: Self-extinguishing PVC

Colour Options: Grey

Service Temperature Range: -15°C to +60°C

Flammability: UL94 V-O Rated Material

Standards: Base Slots to DIN 43659.
RoHS, CSA, UL and Lloyds Register Approved.



PART NUMBERS & SIZES

PART NO. GREY CLOSED SLOT	NOMINAL SIZE INNER (WxH) mm	NOMINAL SIZE OUTER (WxH) mm	PACK QTY M
10460011	15 x 15	17 x 17	48
10460018	19 x 50	25 x 53	24
10460021	25 x 20	29 x 23	24
10460022	25 x 37.5	29 x 41	24
10460023	25 x 50	29 x 54	24
10460024	25 x 75	29 x 79	16
10460025	25 x 100	30 x 105	16
10460032	37.5 x 37.5	37.5 x 37.5	24
10460033	37.5 x 50	41 x 54	16
10460034	37.5 x 75	39 x 79	16
10460035	37.5 x 100	43 x 105	16
10460051	50 x 25	54 x 28	24
10460052	50 x 37.5	54 x 41	16
10460053	50 x 50	54 x 54	16
10460054	50 x 75	55 x 79	16
10460055	50 x 100	56 x 105	8
10460072	75 x 37.5	78 x 41	16
10460073	75 x 50	78 x 54	16
10460074	75 x 75	80 x 80	16
10460075	75 x 100	80 x 105	8
10460103	100 x 50	107 x 54	8
10460104	100 x 75	107 x 80	8
10460105	100 x 100	107 x 105	8
10460106	100 x 125	107 x 130	8
10460124	125 x 75	131 x 78	8

DESCRIPTION

Closed slot PVC Betaduct provides a lightweight self-extinguishing cable trunking with excellent rigidity and performance characteristics. It has excellent cable retention with enhanced protection for installers. It is provided in 23 sizes with 20mm slot pitching. Recommended fixing method; Betaduct rivets and washers.

APPLICATION

For use when bundles, cables and wires need supporting in control panels, distribution boards and switchgear. Ideal for all panel building applications.

SPECIFICATION

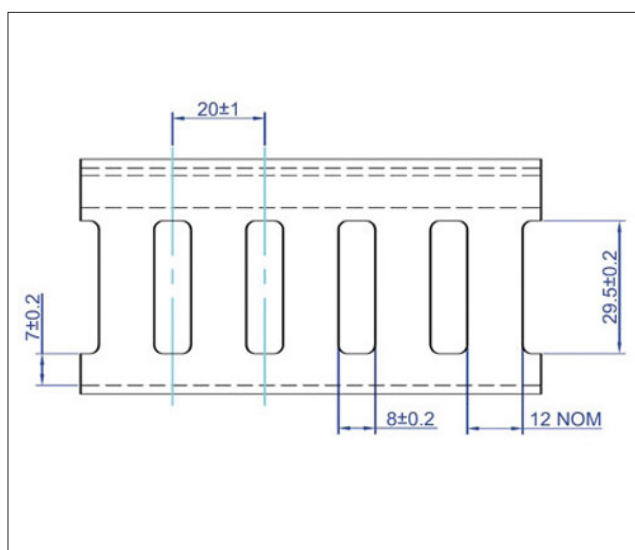
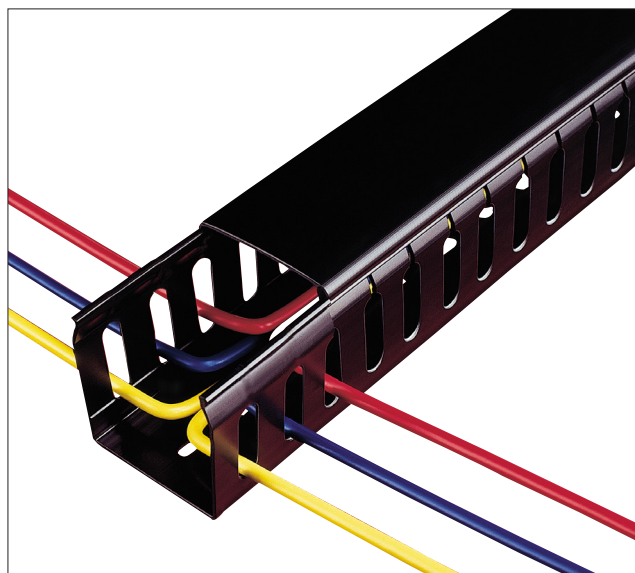
Material: Self-extinguishing PVC

Colour Options: Black

Service Temperature Range: -15°C to +60°C

Flammability: UL94 V-O Rated Material

Standards: Base Slots to DIN 43659.
RoHS, CSA, UL and Lloyds Register Approved.



PART NUMBERS & SIZES

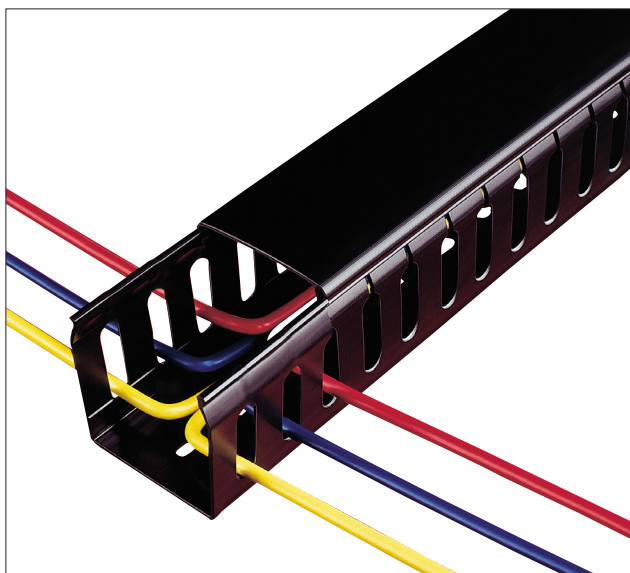
PART NO. BLACK CLOSE SLOT	NOMINAL SIZE INNER (WxH) mm	NOMINAL SIZE OUTER (WxH) mm	PACK QTY (METRES)
0900	15 x 15	17 x 17	48
0950	19 x 50	25 x 53	24
0901	25 x 20	29 x 23	24
0951	25 x 37.5	29 x 41	24
0903	25 x 50	29 x 54	24
0904	25 x 75	29 x 79	16
0953	25 x 100	30 x 105	16
0954	37.5 x 37.5	37.5 x 37.5	24
0955	37.5 x 50	41 x 54	16
0956	37.5 x 75	39 x 79	16
0957	37.5 x 100	43 x 105	16
0959	50 x 37.5	54 x 41	16
0906	50 x 50	54 x 54	16
0907	50 x 75	55 x 79	16
0962	50 x 100	56 x 105	8
0964	75 x 50	78 x 54	16
0909	75 x 75	80 x 80	16
0966	75 x 100	80 x 105	8
0968	100 x 50	107 x 54	8
0969	100 x 75	107 x 80	8
0970	100 x 100	107 x 105	8
0971	100 x 125	107 x 130	8
0940	125 x 75	131 x 78	8

DESCRIPTION

Closed slot PVC Betaduct provides a lightweight self extinguishing cable trunking with excellent rigidity and performance characteristics. It has excellent cable retention with enhanced protection for installers. Supplied in handy mini packs containing 4 x 1 metre packs. Recommended fixing method; Betaduct rivets and washers.

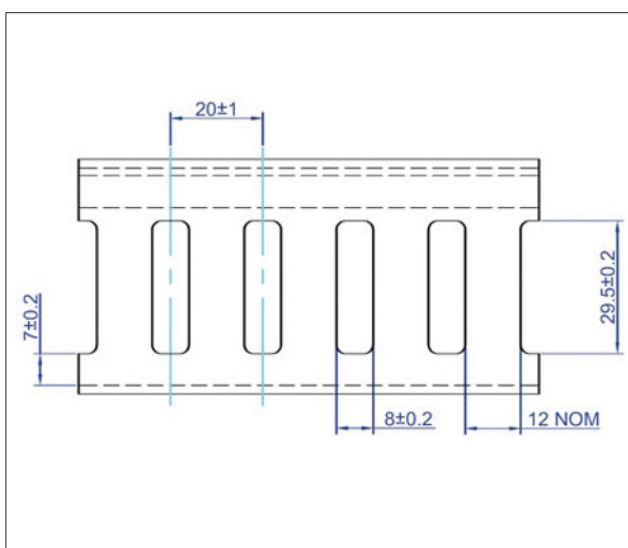
APPLICATION

For use when bundles, cables and wires need supporting in control panels, distribution boards and switchgear. Ideal for all panel building applications.



SPECIFICATION

Material:	Self-extinguishing PVC
Colour Options:	Grey or Black
Service Temperature Range:	-15°C to +60°C
Flammability:	UL94 V-O Rated Material
Standards:	Base Slots to DIN 43659. RoHS, CSA, UL and Lloyds Register Approved.



PART NUMBERS & SIZES

PART NO.	COLOUR	NOMINAL SIZE INNER (WxH) mm	NOMINAL SIZE OUTER (WxH) mm	QTY
08862000	Black	25 x 37.5	29 x 41	4 x 1m
08872000	Black	25 x 50	29 x 54	4 x 1m
08882000	Black	50 x 50	54 x 54	4 x 1m
10452022	Grey	25 x 37.5	29 x 41	4 x 1m
10452023	Grey	25 x 50	29 x 54	4 x 1m
10452051	Grey	50 x 25	54 x 28	4 x 1m
10452053	Grey	50 x 50	54 x 54	4 x 1m

DESCRIPTION

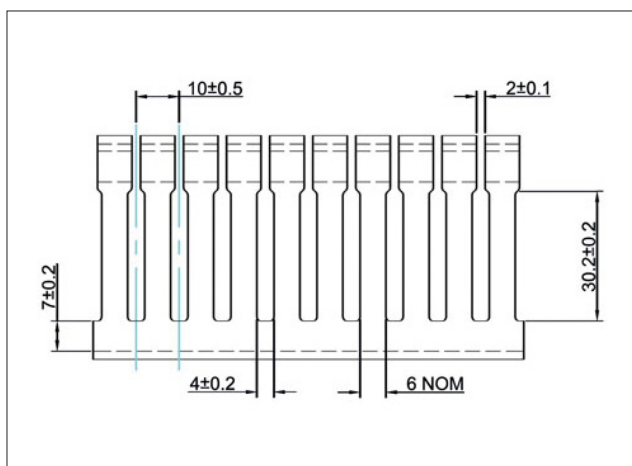
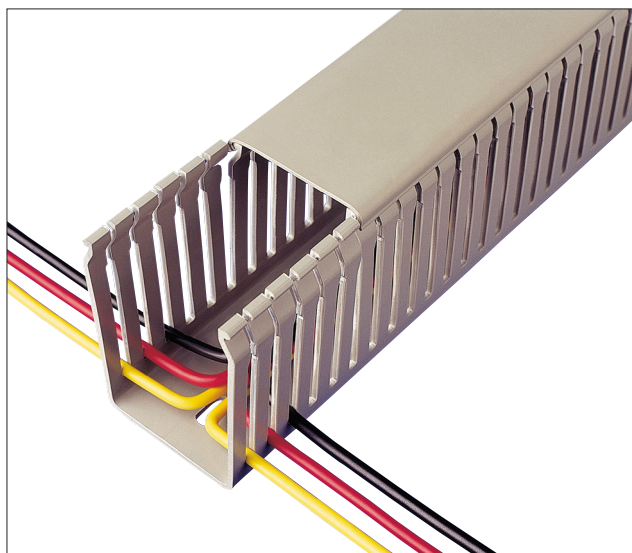
Narrow slot PVC Betaduct provides a lightweight self extinguishing cable trunking with excellent rigidity and performance characteristics. Ideal for use with slimmer terminal blocks where more access is required. It improves appearance of panels with cables out in best position. Comes in 20 sizes with 10mm slot pitching. Recommended fixing method; Betaduct rivets and washers.

APPLICATION

Used with slimmer terminal blocks where more access is required, it improves appearance of panels with cables out in best position. For use when bundles, cables and wires need supporting in control panels, distribution boards and switchgear. Ideal for all panel building applications.

SPECIFICATION

Material:	Self-extinguishing PVC
Colour Options:	Grey (RAL 7030)
Service Temperature Range:	-15°C to +60°C
Flammability:	UL94 V-O Rated Material
Standards:	Base Slots to DIN 43659. RoHS, CSA, UL and Lloyds Register Approved.



PART NUMBERS & SIZES

PART NO. GREY NARROW SLOT	NOMINAL SIZE INNER (WxH) mm	NOMINAL SIZE OUTER (WxH) mm	PACK QTY (METRES)
10470018	19 x 50	25 x 53	24
10470022	25 x 37.5	29 x 41	24
10470023	25 x 50	29 x 54	24
10470024	25 x 75	29 x 79	16
10470025	25 x 100	30 x 105	16
10470032	37.5 x 37.5	41 x 41	24
10470033	37.5 x 50	41 x 54	16
10470034	37.5 x 75	41 x 79	16
10470035	37.5 x 100	43 x 105	16
10470052	50 x 37.5	56 x 41	16
10470053	50 x 50	54 x 54	16
10470054	50 x 75	55 x 79	16
10470055	50 x 100	56 x 105	8
10470072	75 x 37.5	80 x 41	16
10470073	75 x 50	78 x 54	16
10470074	75 x 75	80 x 80	16
10470075	75 x 100	80 x 105	8
10470103	100 x 50	107 x 54	8
10470104	100 x 75	107 x 80	8
10470105	100 x 100	107 x 104	8

DESCRIPTION

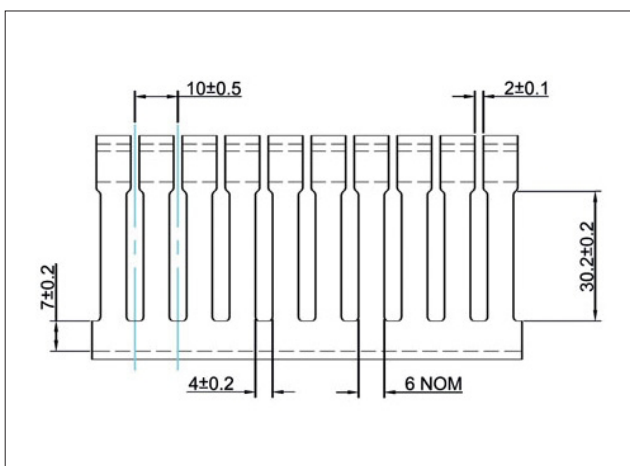
Narrow slot PVC Betaduct provides a lightweight self extinguishing cable trunking with excellent rigidity and performance characteristics. Ideal for use with slimmer terminal blocks where more access is required. It improves appearance of panels with cables out in best position. Comes in 20 sizes with 10mm slot pitching. Recommended fixing method; Betaduct rivets and washers.

APPLICATION

Used with slimmer terminal blocks where more access is required, it improves appearance of panels with cables out in best position. For use when bundles, cables and wires need supporting in control panels, distribution boards and switchgear. Ideal for all panel building applications.

SPECIFICATION

- Material:** Self-extinguishing PVC
- Colour Options:** Black
- Service Temperature Range:** -15°C to +60°C
- Flammability:** UL94 V-O Rated Material
- Standards:** Base Slots to DIN 43659.
RoHS, CSA, UL and Lloyds Register Approved.



PART NUMBERS & SIZES

PART NO. BLACK NARROW SLOT	NOMINAL SIZE INNER (WxH) mm	NOMINAL SIZE OUTER (WxH) mm	PACK QTY (METRES)
10490018	19 x 50	25 x 53	24
10490022	25 x 37.5	29 x 41	24
10490023	25 x 50	29 x 54	24
10490024	25 x 75	29 x 79	16
10490025	25 x 100	30 x 105	16
10490032	37.5 x 37.5	41 x 41	24
10490033	37.5 x 50	41 x 54	16
10490034	37.5 x 75	41 x 79	16
10490035	37.5 x 100	43 x 105	16
10490052	50 x 37.5	56 x 41	16
10490053	50 x 50	54 x 54	16
10490054	50 x 75	55 x 79	16
10490055	50 x 100	56 x 105	8
10490072	75 x 37.5	80 x 41	16
10490073	75 x 50	78 x 54	16
10490074	75 x 75	80 x 80	16
10490075	75 x 100	80 x 105	8
10490103	100 x 50	107 x 54	8
10490104	100 x 75	107 x 80	8
10490105	100 x 100	107 x 104	8

DESCRIPTION

Solid Wall PVC Betaduct provides a lightweight self-extinguishing cable trunking with excellent rigidity and performance characteristics. Solid wall design fully encloses cables providing maximum protection. Available in 25 sizes. Recommended fixing method; Betaduct rivets and washers.

APPLICATION

Ideal for use where little or no breakouts are required when bundles, cables and wires need supporting in control panels, distribution boards and switchgear. Ideal for all panel building applications.



SPECIFICATION

Material: Self-extinguishing PVC

Colour Options: Grey RAL 7030

Service Temperature Range: -15°C to +60°C

Flammability: UL94 V-O Rated Material

Standards: Base Slots to DIN 43659.
RoHS, CSA, UL and Lloyds Register Approved.



PART NUMBERS & SIZES

PART NO. GREY SOLID WALL	NOMINAL SIZE INNER (WxH) mm	NOMINAL SIZE OUTER (WxH) mm	PACK QTY (METRES)
10480011	15 x 15	17 x 17	48
10480018	19 x 50	25 x 53	24
10480021	25 x 20	29 x 23	24
10480022	25 x 37.5	29 x 41	24
10480023	25 x 50	29 x 54	24
10480024	25 x 75	29 x 79	16
10480025	25 x 100	29 x 105	16
10480032	37.5 x 37.5	41 x 41	24
10480033	37.5 x 50	41 x 54	16
10480034	37.5 x 75	41 x 79	16
10480035	37.5 x 100	43 x 105	16
10480051	50 x 25	54 x 28	24
10480052	50 x 37.5	54 x 41	16
10480053	50 x 50	54 x 54	16
10480054	50 x 75	55 x 79	16
10480055	50 x 100	56 x 105	8
10480072	75 x 37.5	80 x 41	16
10480073	75 x 50	78 x 54	16
10480074	75 x 75	80 x 80	16
10480075	75 x 100	80 x 105	8
10480103	100 x 50	107 x 54	8
10480104	100 x 75	107 x 80	8
10480105	100 x 100	107 x 104	8
10480106	100 x 125	107 x 130	8
10480124	125 x 75	131 x 78	8

DESCRIPTION

Solid Wall PVC Betaduct provides a lightweight self-extinguishing cable trunking with excellent rigidity and performance characteristics. Solid wall design fully encloses cables providing maximum protection. Available in 25 sizes. Recommended fixing method; Betaduct rivets and washers.

APPLICATION

Ideal for use where little or no breakouts are required when bundles, cables and wires need supporting in control panels, distribution boards and switchgear. Ideal for all panel building applications.



SPECIFICATION

Material: Self-extinguishing PVC

Colour Options: Black

Service Temperature Range: -15°C to +60°C

Flammability: UL94 V-O Rated Material

Standards: Base Slots to DIN 43659.
RoHS, CSA, UL and Lloyds Register Approved.



PART NUMBERS & SIZES

PART NO. BLACK SOLID WALL	NOMINAL SIZE INNER (WxH) mm	NOMINAL SIZE OUTER (WxH) mm	PACK QTY (METRES)
0920	15 x 15	17 x 17	48
0921	25 x 20	29 x 23	24
0923	25 x 50	29 x 54	24
0924	25 x 75	29 x 79	16
0926	50 x 50	54 x 54	16
0927	50 x 75	55 x 79	16
0929	75 x 75	80 x 80	16
0942	125 x 75	131 x 78	8
1010	19 x 50	25 x 53	24
1011	25 x 37.5	29 x 41	24
1013	25 x 100	29 x 105	16
1014	37.5 x 37.5	41 x 41	24
1015	37.5 x 50	41 x 54	16
1016	37.5 x 75	41 x 79	16
1017	37.5 x 100	43 x 105	16
1018	50 x 25	54 x 28	24
1019	50 x 37.5	54 x 41	16
1022	50 x 100	56 x 105	8
1023	75 x 37.5	80 x 41	16
1024	75 x 50	78 x 54	16
1026	75 x 100	80 x 105	8
1028	100 x 50	107 x 54	8
1029	100 x 75	107 x 80	8
1030	100 x 100	107 x 104	8
1031	100 x 125	107 x 130	8



Betaduct Halogen-Free

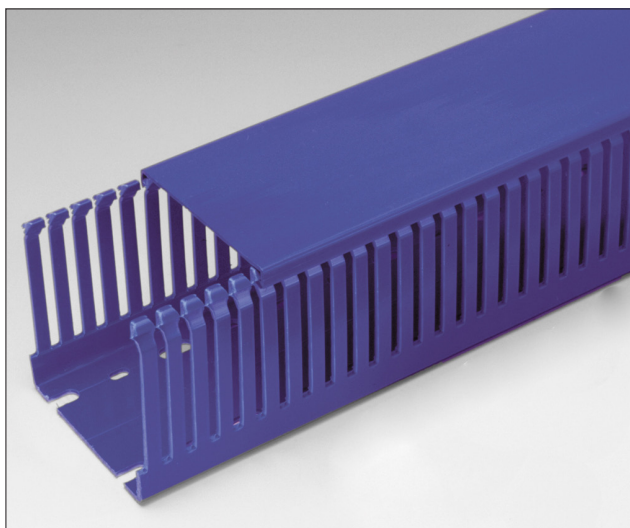
Ideal for use in applications where danger to members of the public is a concern such as public buildings, shopping centres, hospitals, airport terminals, stadiums, as well as a variety of hostile environments.



Blue HF Narrow Slot	14
Grey HF Narrow Slot	15
Grey HF Open Slot	16

DESCRIPTION

Blue Halogen-Free Betaduct is manufactured in the UK from Noryl NH5110E and is available in narrow slot options. It is made from a material which, during burning, forms a protective charred intumescent surface layer and, being free from Halogens, does not emit harmful substances such as Hydrochloric acid and Chloride gases, which are associated with PVC. Noryl NH5110E provides lightweight cable trunking with excellent rigidity and performance characteristics. Recommended fixing method; Betaduct rivets and washers.

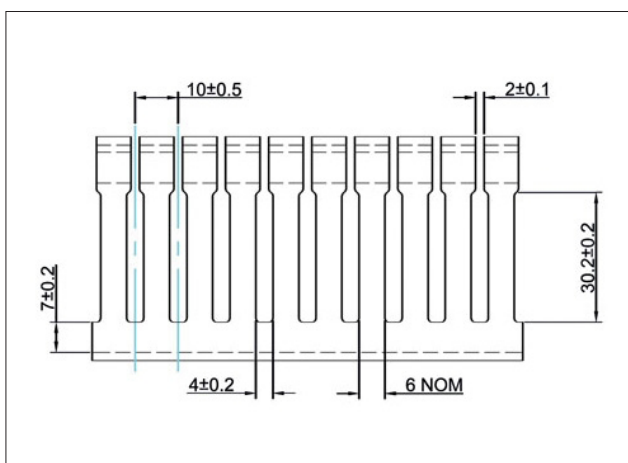


APPLICATION

Ideal for use in hostile environments, where danger to health is a concern, such as petrochemical plants and off shore oil platforms, also suitable for I.S circuits.

SPECIFICATION

Material:	Noryl NH5110E
Colour Options:	Blue (RAL 5015)
Service Temperature Range:	-25°C to +70°C
Oxygen Index:	35.7% (ISO 4589-2)
Flammability:	UL94 V-1 Rated Material
Standards:	cULus and Lloyds Register. UL Approved.



PART NUMBERS & SIZES

PART NO. HF BLUE NARROW SLOT	NOMINAL SIZE INNER (WxH) mm	PACK QTY (METRES)
20476034	37.5 x 75	16
20476054	50 x 75	8
20476033	37.5 x 50	8
20476074	75 x 75	8
20476073	75 x 50	8
20476053	50 x 50	8
20476105	100 x 100	4
20476104	100 x 75	4
20476103	100 x 50	4
20476124	125 x 75	4

DESCRIPTION

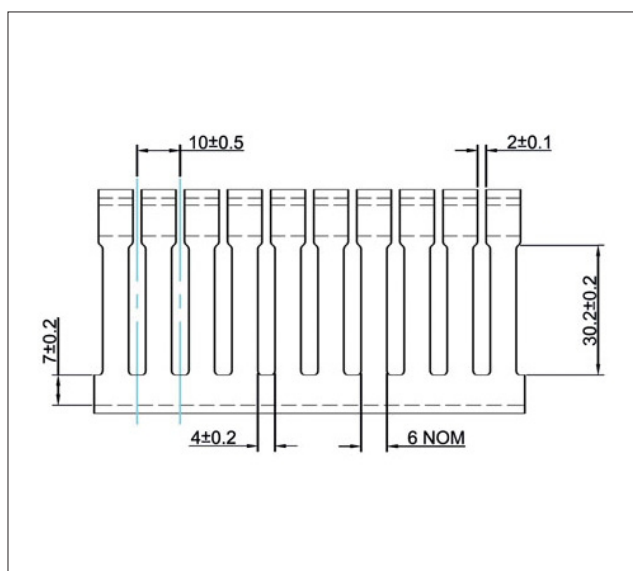
Halogen-free Betaduct is manufactured in the UK from Noryl NH5110E and is available in narrow slot. Made from material which forms a protective charred "intumescent" surface layer and being free from Halogen, this Betaduct does not emit harmful products such as Hydrochloric acid and Chloride gas, which is associated with PVC. It provides a lightweight cable trunking with excellent rigidity and performance characteristics. Recommended fixing method; Betaduct rivets and washers.

APPLICATION

Ideal for use in applications where danger to members of the public is a concern such as public buildings, shopping centre's, hospitals, airport terminals, stadiums, as well as a variety of hostile environments.

SPECIFICATION

Material:	Noryl NH5110E
Colour Options:	Light Grey (RAL 7035)
Service Temperature Range:	-25°C to +70°C
Oxygen Index:	35.7% (ISO 4589-2)
Flammability:	UL94 V-1 Rated Material
Standards:	cULus and Lloyds Register UL Approved.

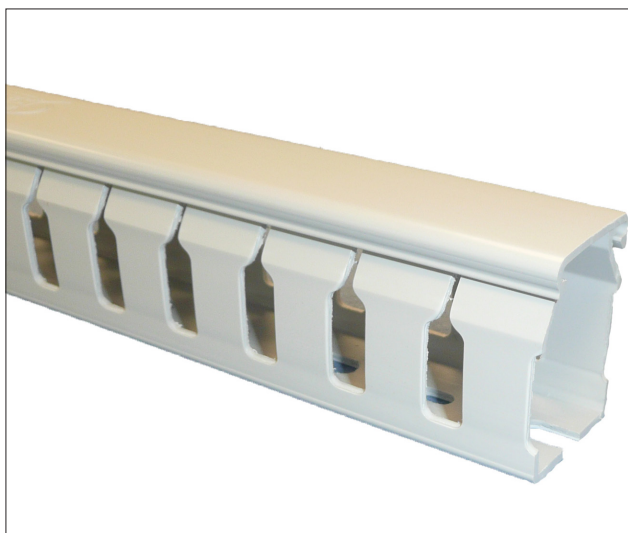


PART NUMBERS & SIZES

PART NO. HF GREY NARROW SLOT	NOMINAL SIZE INNER (WxH) mm	PACK QTY (METRES)
20470032	37.5 x 37.5	24
20470033	37.5 x 50	16
20470034	37.5 x 75	16
20470053	50 x 50	16
20470054	50 x 75	16
20470073	75 x 50	16
20470074	75 x 75	16
20470103	100 x 50	8
20470104	100 x 75	8

DESCRIPTION

Halogen-free Betaduct is manufactured in the UK from Noryl NH5110E and is available in open slot. Made from material which forms a protective charred "intumescent" surface layer and being free from Halogen, this Betaduct does not emit harmful products such as Hydrochloric acid and Chloride gas, which is associated with PVC. It provides a lightweight cable trunking with excellent rigidity and performance characteristics. Recommended fixing method; Betaduct rivets and washers.

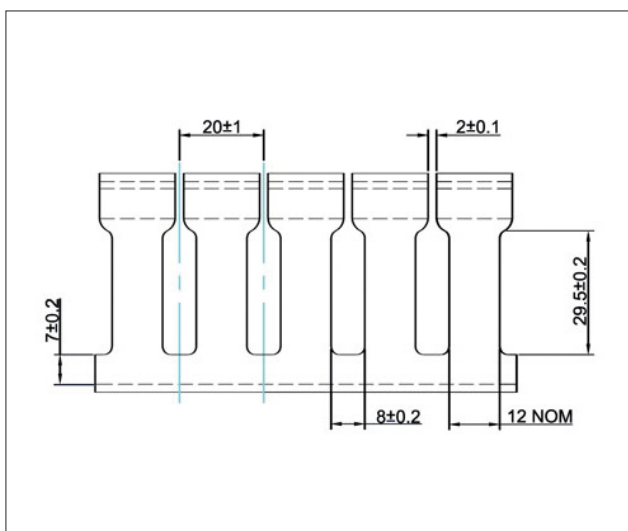


APPLICATION

Ideal for use in applications where danger to members of the public is a concern such as public buildings, shopping centre's, hospitals, airport terminals, stadiums, as well as a variety of hostile environments.

SPECIFICATION

Material:	Noryl NH5110E
Colour Options:	Light Grey (RAL 7035)
Service Temperature Range:	-25°C to +70°C
Oxygen Index:	35.7% (ISO 4589-2)
Flammability:	UL94 V-1 Rated Material
Standards:	cULus and Lloyds Register UL Approved



PART NUMBERS & SIZES

PART NO. HF GREY OPEN SLOT	NOMINAL SIZE INNER (WxH) mm	PACK QTY(METRES)
20450022	25x 37.5	24
20450023	25 x 50	24
20450024	25 x 75	16
20450032	37.5 x 37.5	24
20450033	37.5 x 50	16
20450034	37.5 x 75	16
20450053	50 x 50	16
20450054	50 x 75	16
20450055	50 x 100	8
20450073	75 x 50	16
20450074	75 x 75	16
20450075	75 x 100	8
20450103	100 x 50	8
20450104	100 x 75	8
20450105	100 x 100	8



Betaduct Noryl

Designed for installations in control panels in hazardous applications such as rail, offshore, marine and mass transit.



Noryl Open Slot 18

Noryl Closed Slot 19

Noryl Solid Wall 20

DESCRIPTION

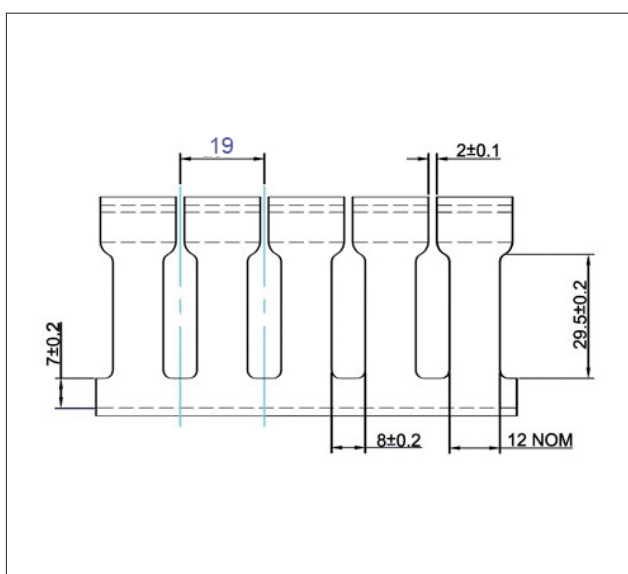
Betaduct Noryl is free from toxic halogens, has excellent low smoke characteristics and high operating temperatures. Noryl Betaduct is recommended for areas when human life or electronic components are a risk. Available in open slot in 6 sizes with 19mm slot pitching and 8mm slot width. Recommended fixing method; Betaduct rivets and washers.

APPLICATION

For use when bundles, cables and wires need supporting in control panels, distribution boards and switchgear. Designed and specified for installations in hazardous applications such as rail, underground, marine, mass transit and military applications. Widely used in petrochemical plants and off shore oil and gas installations and accommodation modules.

SPECIFICATION

Material:	Self-Extinguishing, Noryl Extra, Halogen-Free
Colour Options:	Black
Service Temperature Range:	-30°C to +120°C
Flammability:	UL94 V-0 Rated Material BS 476 Part 7 Class I (Y)
Standards:	UL and Lloyds Register Base slots to DIN 43659.



PART NUMBERS & SIZES

PART NO.	NOMINAL SIZE INNER (WxH) mm	NOMINAL SIZE OUTER (WxH) mm	PACK QTY (METRES)
23461	25 x 37.5	29 x 38	24
23462	25 x 50	29 x 54	24
23463	25 x 75	29 x 79	16
23464	50 x 50	54 x 54	16
23465	50 x 75	54 x 79	16
23466	75 x 75	80 x 80	16

DESCRIPTION

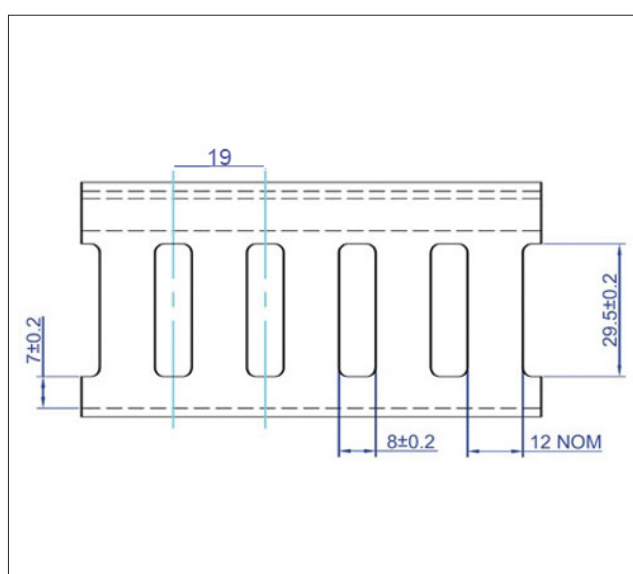
Betaduct Noryl is free from toxic halogens, has excellent low smoke characteristics and high operating temperatures. Noryl Betaduct is recommended for areas when human life or electronic components are a risk. Available in closed slot in 6 sizes with 19mm slot pitching and 8mm slot width. Recommended fixing method; Betaduct rivets and washers.

APPLICATION

For use when bundles, cables and wires need supporting in control panels, distribution boards and switchgear. Designed and specified for installations in hazardous applications such as rail, underground, marine, mass transit and military applications. Widely used in petrochemical plants and off shore oil and gas installations and accommodation modules.

SPECIFICATION

Material:	Self-Extinguishing, Noryl Extra, Halogen-Free
Colour Options:	Black
Service Temperature Range:	-30°C to +120°C
Flammability:	UL94 V-0 Rated Material BS 476 Part 7 Class I (Y)
Standards:	UL and Lloyds Register Base slots to DIN 43659.

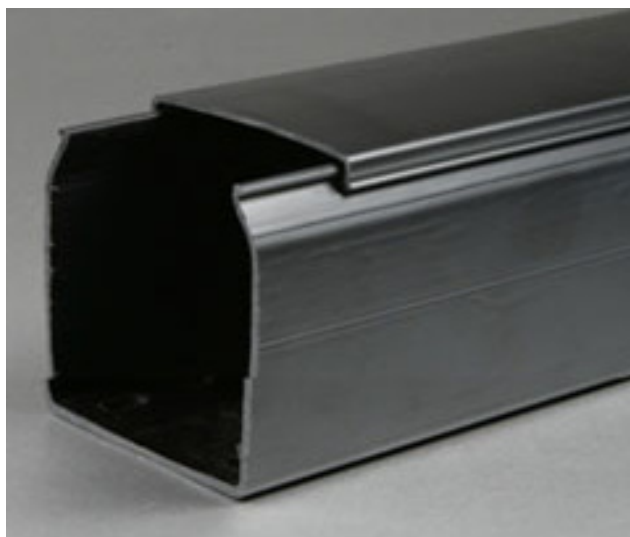


PART NUMBERS & SIZES

PART NO.	NOMINAL SIZE INNER (WxH) mm	NOMINAL SIZE OUTER (WxH) mm	PACK QTY (METRES)
23451	25 x 37.5	29 x 38	24
23452	25 x 50	29 x 54	24
23453	25 x 75	29 x 79	16
23454	50 x 50	54 x 54	16
23455	50 x 75	54 x 79	16
23456	75 x 75	80 x 80	16

DESCRIPTION

Betaduct Noryl is free from toxic halogens, has excellent low smoke characteristics and high operating temperatures. Noryl Betaduct is recommended for areas when human life or electronic components are a risk. Available in solid wall in 2 sizes. Recommended fixing method; Betaduct rivets and washers.



APPLICATION

For use when bundles, cables and wires need supporting in control panels, distribution boards and switchgear. Designed and specified for installations in hazardous applications such as rail, underground, marine, mass transit and military applications. Widely used in petrochemical plants and off shore oil and gas installations and accommodation modules.

SPECIFICATION

Material: Self-Extinguishing, Noryl Extra, Halogen-Free

Colour Options: Black

Service Temperature Range: -30°C to +120°C

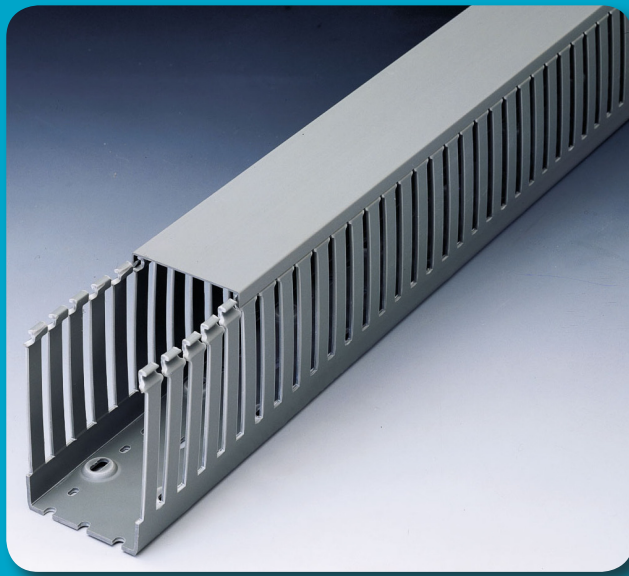
Flammability: UL94 V-0 Rated Material
BS 476 Part 7 Class I (Y)

Standards: UL and Lloyds Register
Base slots to DIN 43659.



PART NUMBERS & SIZES

PART NO.	NOMINAL SIZE INNER (WxH) mm	NOMINAL SIZE OUTER (WxH) mm	PACK QTY (METRES)
234720	25 x 50	29 x 54	24
23476	75 x 75	80 x 80	16



Betaduct Iboco

Iboco T1	22
Iboco T1-F	23
Iboco T1-E	24
Iboco T1-EF	25
Iboco TD	26
Iboco SEP-E	27
Iboco DN-A	28
Iboco Spiralite	29
Iboco Wire Retainers	30
Iboco Ductafix	31
Iboco Rivet Tool	32

DESCRIPTION

This duct is ideal for wiring large sized cables usually employed in power panels. With thick side and base, it has a strong construction and maximum application stability, very good holding under heavy wiring and longer durability and reliability. Available in a wide range of heights for space optimisation inside the electric panel. Recommended fixing method; Betaduct rivets and washers.

APPLICATION

Ideal for wiring large sized cables usually employed in power panels. With thick side and base, it has a strong construction and maximum application stability, very good holding also under heavy wiring and longer durability and reliability.

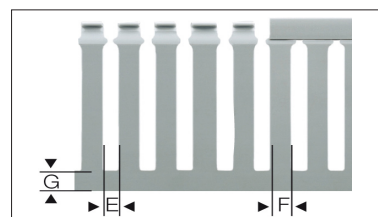
SPECIFICATION

Material:	Rigid Self-extinguishing PVC
Colour Options:	Grey RAL 7030, Blue RAL 5015
Standard Length:	2 Metres
Standard Unit Supplied:	Duct complete with cover
Standards:	CSA, UL Approved

PART NUMBERS & SIZES

G = Grey RAL 7030

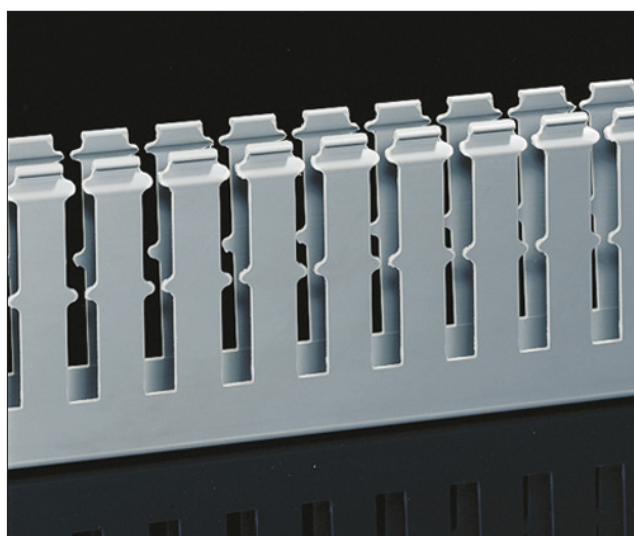
BL = Blue RAL 5015



PART NO.	BASE x HEIGHT (mm)	E	F	G	SECTION (mm ²)	PACK QTY (m)
T1 15X18 G	15 x 18	5	75	4	200	72
T1 15X20 G	15 x 30	5	75	6	340	64
T1 25X30 G/BL	25 x 30	5	75	8	610	72
T1 15X40 G	15 x 40	5	75	10	460	48
T1 25X40 G	25 x 40	8	12	12	820	72
T1 40X40 G	40 x 40	8	12	12	1360	40
T1 60X40 G/BL	60 x 40	8	12	12	1970	24
T1 80X40 G	80 x 40	8	12	12	2680	24
T1 100X40 G	100 x 40	8	12	12	3380	16
T1 15X60 G	15 x 60	5	75	10	680	32
T1 25X60 G/BL	25 x 60	8	12	14	1190	48
T1 40X60 G/BL	40 x 60	8	12	14	2040	36
T1 60X60 G/BL	60 x 60	8	12	14	3080	24
T1 80X60 G	80 x 60	8	12	14	4150	24
T1 100X60 G	100 x 60	8	12	14	5250	16
T1 120X60 G	120 x 60	8	12	14	6300	16
T1 25X80 G	25 x 80	8	12	16	1550	48
T1 40X80 G	40 x 80	8	12	16	2700	32
T1 60X80 G/BL	60 x 80	8	12	16	4140	24
T1 80X80 G/BL	80 x 80	8	12	16	5660	24
T1 100X80 G	100 x 80	8	12	16	7150	16
T1 120X80 G	120 x 80	8	12	16	8630	16
T1 25X100 G	25 x 100	8	12	18	3310	16
T1 40X100 G	40 x 100	8	12	18	3310	26
T1 60X100 G	60 x 100	8	12	18	5140	8
T1 80X100 G	80 x 100	8	12	18	7020	8
T1 100X100 G	100 x 100	8	12	18	8920	8
T1 150X100 G	150 x 100	8	12	18	13570	8
T1 75X125 G	75 x 25	8	12	20	8398	12
T1 100X125 G	100 x 125	8	12	20	11415	8

DESCRIPTION

The T1-F duct is ideal for wiring large sized cables usually employed in power panels. Narrow fingers for easier vertical wiring before the cover is mounted, for correct wire positioning and circuit separation. With a thick side and base, it has a strong construction and maximum application stability, very good holding under heavy wiring and longer durability and reliability. Available in a wide range of heights for space optimisation inside the electric panel. Recommended fixing method; Betaduct rivets and washers.



APPLICATION

Ideal for wiring large sized cables usually employed in power panels. With thick side and base, it has a strong construction and maximum application stability, very good holding also under heavy wiring and longer durability and reliability.



SPECIFICATION

Material:	Rigid Self-extinguishing PVC
Colour Options:	Grey RAL 7030
Standard Length:	2 Metres
Standard Unit Supplied:	Duct complete with cover
Standards:	CSA, UL Approved

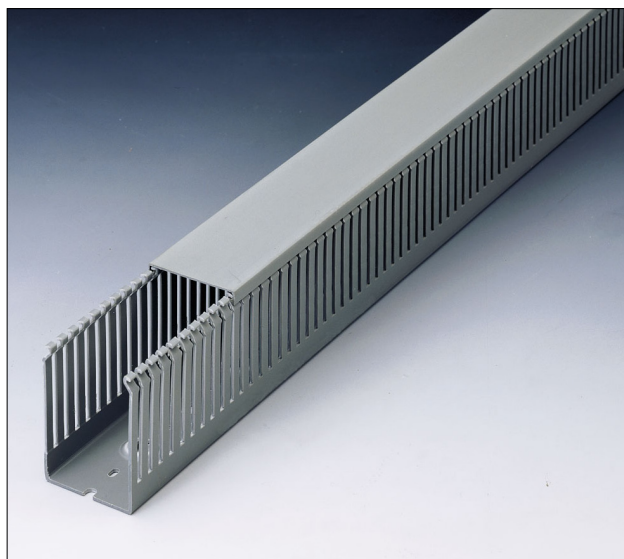


PART NUMBERS & SIZES

PART NUMBER	BASE x HEIGHT (mm)	E	F	G	SECTION (mm ²)	PACK QTY (m)
T1-F 25X80 G	25 x 80	8	12	16	1550	48
T1-F 40X80 G	40 x 80	8	12	16	2700	32
T1-F 60X80 G	60 x 80	8	12	16	4140	24
T1-F 80X80 G	80 x 80	8	12	16	5660	24
T1-F 100X80 G	100 x 80	8	12	16	7150	16
T1-F 120X80 G	120 x 80	8	12	16	8630	16
T1-F 40X100 G	40 x 100	8	12	16	3310	16
T1-F 60X100 G	60 x 100	8	12	16	5140	8
T1-F 80X100 G	80 x 100	8	12	16	7020	8
T1-F 100X100 G	100 x 100	8	12	16	8920	8
T1-F 150X100 G	150 x 100	8	12	16	13570	8

DESCRIPTION

THE T1-E duct is commonly employed in electric control panels. It has restricted slot opening and its strong and robust due to its thick base and side construction. Perfect solidity is also guaranteed in cantilevered applications. Made of material with more than 3000NPa modules of elasticity, it allows for repeated opening and closing of the duct fingers during wiring operations even at low temperature, without breaking. Recommended fixing method; Betaduct rivets and washers.

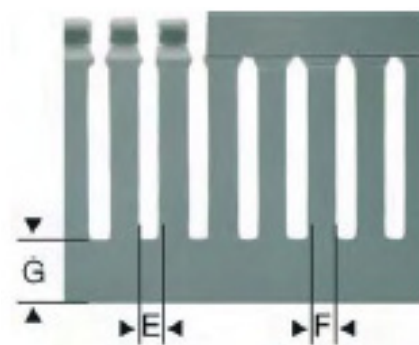


APPLICATION

Ideal for wiring large sized cables usually employed in power panels. With thick side and base, it has a strong construction and maximum application stability, very good holding also under heavy wiring and longer durability and reliability.

SPECIFICATION

Material:	Rigid Self-extinguishing PVC
Colour Options:	Grey RAL 7030
Standard Length:	2 Metres
Standard Unit Supplied:	Duct complete with cover
Standards:	CSA, UL Approved



PART NUMBERS & SIZES

PART NUMBER	BASE x HEIGHT (mm)	E	F	G	SECTION (mm ²)	PACK QTY (m)
T1-E 25X40 G	25 x 40	4	6	12	820	72
T1-E 40X40 G	40 x 40	4	6	12	1360	40
T1-E 60X40 G	60 x 40	4	6	12	1970	24
T1-E 80X40 G	80 x 40	4	6	12	2680	24
T1-E 100X40 G	100 x 40	4	6	12	3380	16
T1-E 25X60 G	25 x 60	4	6	14	1190	48
T1-E 40X60 G	40 x 60	4	6	14	2040	36
T1-E 60X60 G	60 x 60	4	6	14	3080	24
T1-E 80X60 G	80 x 60	4	6	14	4150	24
T1-E 100X60 G	100 x 60	4	6	14	5250	16
T1-E 120X60 G	120 x 60	4	6	14	6300	16
T1-E 25X80 G	25 x 80	4	6	16	1550	48
T1-E 40X80G	40 x 80	4	6	16	2700	32
T1-E 60X80 G	60 x 80	4	6	16	4140	24
T1-E 80X80 G	80 x 80	4	6	16	5660	24
T1-E 100X80 G	100 x 80	4	6	16	7150	16
T1-E 120X80 G	120 x 80	4	6	16	8630	16
T1-E 100X100 G	100 x 100	4	6	18	8920	8

DESCRIPTION

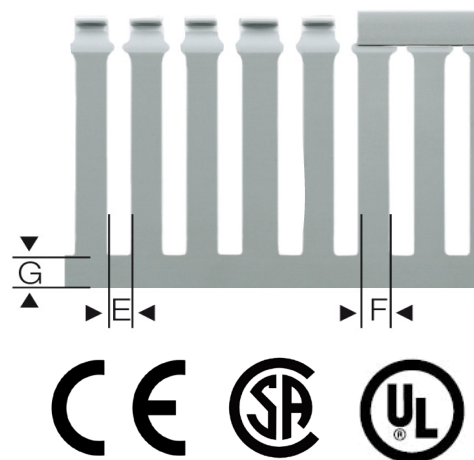
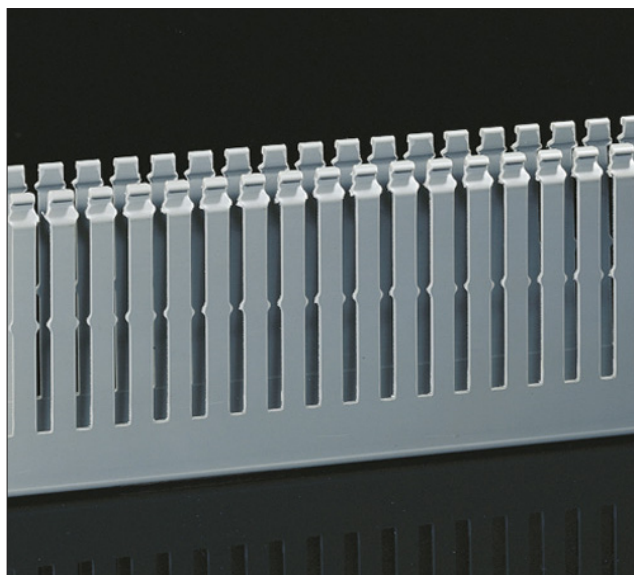
This duct is ideal for wiring large sized cables usually employed in power panels. With thick side and base, it has a strong construction and maximum application stability, very good holding under heavy wiring and longer durability and reliability. Available in a wide range of heights for space optimisation inside the electric panel. Recommended fixing method; Betaduct rivets and washers.

APPLICATION

Ideal for wiring large sized cables usually employed in power panels. With thick side and base, it has a strong construction and maximum application stability, very good holding also under heavy wiring and longer durability and reliability.

SPECIFICATION

Material:	Rigid Self-extinguishing PVC
Colour Options:	Grey RAL 7030
Standard Length:	2 Metres
Standard Unit Supplied:	Duct complete with cover
Standards:	CSA, UL Approved



PART NUMBERS & SIZES

PART NUMBER	BASE x HEIGHT (mm)	E	F	G	SECTION (mm ²)	QTY (m)
T1-EF 25X80 G	25 x 80	4	6	16	1550	48
T1-EF 40X80 G	40 x 80	4	6	16	2700	32
T1-EF 60X80 G	60 x 80	4	6	16	4140	24
T1-EF 80X80 G	80 x 80	4	6	16	5660	24
T1-E 100X80 G	100 x 80	4	6	16	7150	16
T1-E 120X80 G	120 x 80	4	6	16	8630	16
T1-E 100X100 G	100 x 100	4	6	16	8920	8

DESCRIPTION

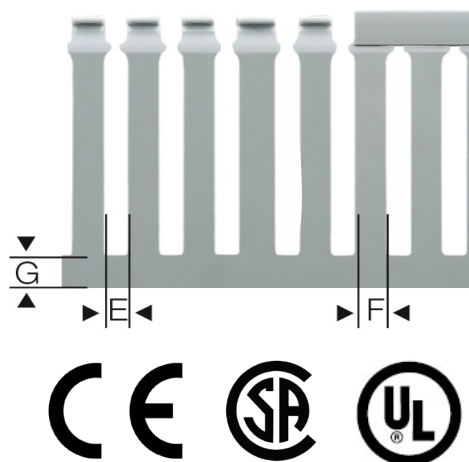
The TD duct features a 12, 5 module according to DIN 43659 and CEI 23-22 standards which is particularly suitable for use with other DIN 12, 5 equipment for perfect size interfacing. Optimized duct size/wire retention ratio and perfectly rounded finger edges for safe operations even in installations with difficult access. Recommended fixing method; Betaduct rivets and washers.

APPLICATION

Ideal for wiring large sized cables usually employed in power panels. With thick side and base, it has a strong construction and maximum application stability, very good holding also under heavy wiring and longer durability and reliability.

SPECIFICATION

Material:	Rigid Self-extinguishing PVC
Colour Options:	Grey RAL 7030
Standard Length:	2 Metres
Standard Unit Supplied:	Duct complete with cover
Standards:	CSA, UL Approved



PART NUMBERS & SIZES

PART NUMBER	BASE x HEIGHT (mm)	E	F	G	SECTION (mm ²)	PACK QTY (m)
TD 25X25 G	25 x 25	5	7.5	7	460	48
TD 37.5X25 G	37.5 x 25	5	7.5	7	660	64
TD 50X37.5 G	50 x 37.5	5	7.5	10	1490	24
TD 25X50 G	25 x 50	5	7.5	11	990	48
TD 37.5X50 G	37.5 x 50	5	7.5	11	1500	24
TD 50X50 G	50 x 50	5	7.5	11	2060	24
TD 75X50 G	75 x 50	5	7.5	11	3200	24
TD 100X50 G	100 x 50	5	7.5	11	4330	16
TD 125X50 G	125 x 50	5	7.5	11	5370	16
TD 37.5X75 G	37.5 x 75	5	7.5	13	2330	24
TD 50X75 G	50 x 75	5	7.5	13	3200	24
TD 75X75 G	75 x 75	5	7.5	13	4940	16
TD 100X75 G	100 x 75	5	7.5	13	6650	16
TD 125X75 G	125 x 75	5	7.5	13	8310	12
TD 75X125 G	75 x 75	5	7.5	20	8398	12
TD 100X125 G	100 x 75	5	7.5	29	11415	8

DESCRIPTION

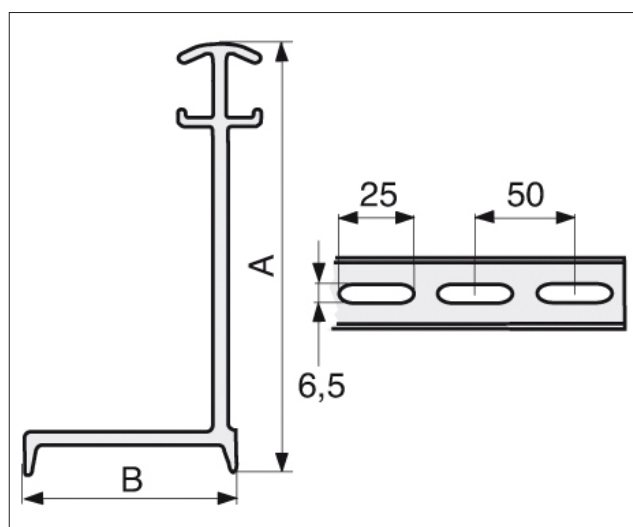
Iboco SEP-E allows the physical separation with different voltages and/or functions. The various mounting arrangements of SEP-E allows alternate compartmentation of duct and differing ratios of usable section.

APPLICATION

Ideal for wiring large sized cables usually employed in power panels. With thick side and base, it has a strong construction and maximum application stability, very good holding also under heavy wiring and longer durability and reliability.

SPECIFICATION

Material:	Rigid Self-extinguishing PVC
Colour Options:	Grey RAL 7030
Standard Length:	2 Metres
Standards:	CSA, UL Approved



PART NUMBERS & SIZES

PART NUMBER	DIMENSIONS INFO (mm) FOR DUCTS HEIGHT	A	B	PACK QTY (Metres)
SEP-E 40	40	33	23	64
SEP-E 60	60	52	23	40
SEP-E 80	80	72	23	24

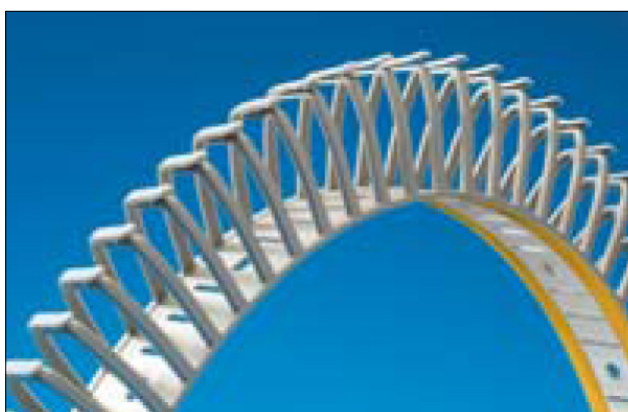
DESCRIPTION

DN-A duct is a unique flexible, resilient and efficient harnessing solution to your wiring needs. For wiring to cabinet doors, from control panels and for electronic equipment. It can accommodate cables in restricted space applications and effectively removes the need for cable ties. DN-A withstands mechanical stress when installed. While in the event of a fire it does not emit corrosive, or toxic gases and smoke development is minimal.



APPLICATION

For all applications where one does not want to provide mounting holes. Especially designed for compact installations, the new design allows for easier inserting and removal of the wires. It is used in a wide variety of industries including food processing, waste water treatment, boat construction, oil industries, office construction, machine tooling, military and many more.



SPECIFICATION

Material:	Self-extinguishing Polypropylene
Colour Options:	Grey RAL 7030
Operating Temp:	Up to 80°C
Available Sizes:	3 sizes with adhesive tape.

PART NUMBERS & SIZES

PART NUMBER	BASE x HEIGHT (mm)	PACK QTY (m)
DN-AS	17.5 x 28	24 pieces each at 0.5m
DN-AM	32 x 43	24 pieces each at 0.5m
DN-AL	42.5 x 55	14 pieces each at 0.5m

DESCRIPTION

Iboco Spiralite is robust, yet simple to install, it gives mechanical protection to the wire bundle which remains flexible whilst rigidly held. Easily removed, it can be easily re-used in the case of temporary wiring. It is essential for fast economical grouping of wire bundles, for joining groups of wires and tubing for fluidic or pneumatic machine control, and for flexible connections between panel and door.

APPLICATION

Designed for panel building, for fast economical grouping of wire bundles.

SPECIFICATION

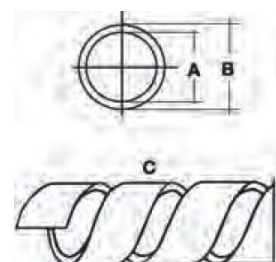
Material:

P - Polypropylene Natural

PA - Polypropylene self-extinguishing according to ASTM D 635.

PART NUMBERS & SIZES

PART NUMBER	DIMENSIONS IN MM			PACK PIECES
A	B	C		
P1	1.5	3	5	50
P2	4	6	8	25
P3	8	10	12	25
P4	9	12	12	20
PA1	1.5	3	5	50
PA2	4	6	8	25
PA3	8	10	12	25
PA4	9	12	12	20
P1B	1.5	3	5	50
P2B	4	6	8	25
P3B	8	10	12	25



DESCRIPTION

CL wire retainers are available in a totally new shape to meet the most sophisticated wire holding requirements. Made of PVC for a better surface finishing and excellent dynamic resistance.

They feature an exclusive and patented system with in-built anchoring element (ZP1) for fast installation allowing it to be repositioned even when duct is already installed and offering maximum locking with anti-rotational pins.

Supplied in RAL 7021 anthracite colour for a better aesthetic result with name, size and quality placed onto upper front side.



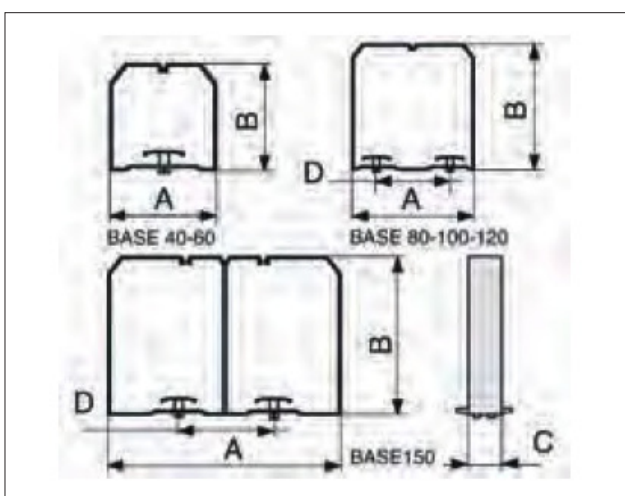
APPLICATION

Designed for retaining wires in control panel trunking.

SPECIFICATION

Material: Rigid Self-extinguishing PVC

Colour Options: Grey RAL 7021



PART NUMBERS & SIZES

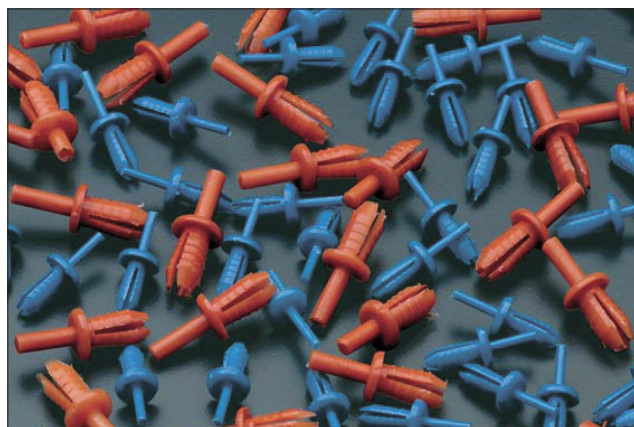
PART NUMBER	A	B	C	D	PACK QTY PIECES
CL 40X40	35	36	20	-	120 (3x40)
CL 60X40	55	35	20	-	120 (3x40)
CL 80X40	75	35	20	50	120 (6x20)
CL 100X40	94	35	20	50	60 (6x10)
CL 40X60	35	56	20	-	120 (3x40)
CL 60X60	54	55	20	-	120 (6x20)
CL 80X60	74	55	20	50	60 (6x10)
CL 100X60	94	55	20	50	60 (6x10)
CL 120X60	114	54	20	50	50 (5x10)
CL 40X80	34	75	20	-	120 (6x20)
CL 60X80	54	75	20	-	60 (3x20)
CL 80X80	74	74	20	50	60 (6x10)
CL 100X80	94	75	20	50	30 (3x10)
CL 125X80	113	74	20	50	30 (3x10)
CL 60X100	54	95	20	-	40 (2x20)
CL 80X100	74	94	20	50	30 (3x10)
CL 100X100	93	94	20	50	30 (6x5)
CL 150X100	143	94	20	50	20 (4x5)

DESCRIPTION

The nylon rivets are available in light blue and orange. They are equipped with fins for a perfect tightness and allowing a quick insertion of the rivet in the rivet tool to make the mounting easier.

APPLICATION

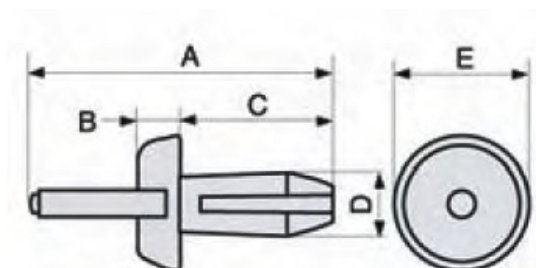
For a proper fitting, rivets have to be inserted in one of the hole ends.



SPECIFICATION

Material: Polyamide 6

Colour Options: Orange or Blue



PART NUMBERS & SIZES

PART NUMBER	A	B	C	D	E	PACK QTY
Ductafix R4	25	2	12	4	9	500 (2x250)
Ductafix R6	25	2	14	6.25	11	250 (1x250)

DESCRIPTION

Independent sliding metal core for the best tool stability and greater pressure exerted when inserting the rivet into the hole. Soft plastics ergonomic handle. Long (233mm) metal body for easy insertion also narrow and high wiring ducts.

APPLICATION

Designed for use with R4 and R6 Ductafix Rivets.

SPECIFICATION

Colour Options: Orange or Blue Handle



PART NUMBERS & SIZES

PART NUMBER	PACK QTY
RT4 (For use with R4 Orange Rivets)	4 (4x1)
RT6 (For use with R6 Blue Rivets)	4 (4x1)



Betaduct Preparation Tools

Betaduct EDC1	34
Betaduct EDNT1	34
Betaduct EDC 2	35
Betaduct Side Cutters	35
Rennsteig 603 618 3	36
Betaduct DC 125 Cutter	37

DESCRIPTION - EDC1

Cutting tool for Easi-Duct trunking webs. Simultaneous cutting of 2 webs. Blade with 21.5mm.

PART NUMBERS

PART NUMBER
EDC1



DESCRIPTION - EDNT1

The EDNT1 has insulated handles, ideal to achieve base punching and slots. Cutting width 3mm, 11mm cut in one operation. Length: 210mm
Weight: 320g

PART NUMBERS

PART NUMBER
EDNT 1



DESCRIPTION - EDC2

This Betaduct trunking cutter is made from hardened steel and varnished aluminium. It has a sharp blade with a useful length of 65mm.

PART NUMBERS

PART NUMBER
EDC2



DESCRIPTION - 1857

These Betaduct side cutters are ideal for use with Betaduct trunking.

PART NUMBERS

PART NUMBER
18570000



DESCRIPTION - RENN 603 618 3

The Rennsteig Notching Tool is a special tool to cut out side walls of slotted trunks. It has a variable cutting depth of up to 80mm with one cut, and a cutting width of 24mm. The notching tool will neatly cut edges without cracking the trunking. The lower part of tool has built-in ejector for the cut-off material.

SPECIFICATION

- Finish Tyoe: Burnished
- Handles: Two-Component
- Length: 260mm
- Weight: 660g
- Cutting Width: 24mm
- Cutting Depth: Variable 80mm max.

PART NUMBERS

PART NUMBER
606 618 3



DESCRIPTION - DC 125 CUTTER

The DC 125 cutter cuts trunking at true angles and avoids burring and expensive redressing. Due to the cam mechanism the DC 125 cuts with little effort. The chip free cutting keeps your site clean and free from pollution and noise.

The 1m long length guide and stop allows cutting of high precision. This cutter must be bench mounted. The blade in tungsten steel provides a cutting width of up to 125mm, and is supplied with an integrated guard giving total security.

APPLICATION

For quick and clean cutting of trunking with slots.

SPECIFICATION

Cutting Width:	125mm
Cutting Length:	1000mm Max.
Dimension:	1290 x 290 x 760mm
Weight:	10.5kg



PART NUMBERS

PART NUMBER
BETADUCT-CUTTER
BETADUCT-CUTTER-BLADE

DESCRIPTION - DC 125 CUTTER BLADES

Spare blades for use with the DC 125 Cutter.





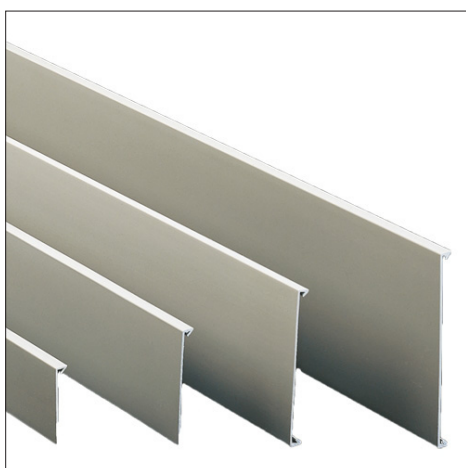
Betaduct Accessories

Spare Lids & Dividers	39
Riveter, Side Cutters, Rivets & Insulating Washers	40



DESCRIPTION

A complete range of Betaduct accessories are available including Betaduct Lids, Dividers, Rivets, Riveters, Side Cutters and Insulating Washers.



BETADUCT LIDS

DUCT WIDTH (mm)	GREY PVC	BLACK PVC	BLUE PVC	NO. OF LENGTHS 2m Each	TOTAL METRES
15	10450001	09310000	-	12	24
19	10450019	09310019	-	12	24
25	10450002	09330000	09336000	12	24
37.5	10450003	09320000	10456003	12	24
50	10450004	09430000	09340000	12	24
75	10450005	09350000	09356000	12	24
100	10450006	09360000	10456006	6	12
125	10450007	09370000	-	6	12



BETADUCT DIVIDERS

DUCT HEIGHT (mm)	GREY PVC	BLACK PVC	BLUE PVC	NO. OF LENGTHS 2m Each	TOTAL METRES
50	10450009	10390000	10396000	4	8
75	10450010	10400000	10406000	4	8



RIVETER

PART NO:	QTY PER BOX
18580000 Standard Colour	1



SIDE CUTTERS

PART NO.	QTY PER BOX
18570000 Standard Colour	1



RIVETS

DUCT HEIGHT (mm)	PART NO:	QTY PER BOX
15 x 15	10490000	100
Other Sizes	10500000	100



INSULATING WASHERS

PART NO.	QTY PER BOX
10440000 Standard Colour	50



The Only UK Manufacturer of
PVC and LFH Control Panel Ducting

Betaduct Ltd, Newtown Trading Estate, Northway Lane,
Tewkesbury, Gloucestershire GL20 8JG
Phone 01684 274274 • Fax 01684 276266
Web www.betaduct.co.uk • Email sales@betaduct.co.uk

