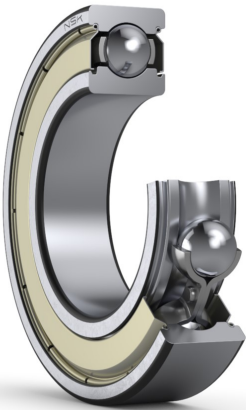




6301ZZ

Single-Row Deep Groove Ball Bearings



Parts Number

6301ZZC3

Boundary Dimensions

d	12	mm	Bore diameter
D	37	mm	Outside diameter
B	12	mm	Width
r (min.)	1	mm	Chamfer dimension

Basic Load Ratings

Cr	10700	N	Basic dynamic load rating
C0r	4200	N	Basic static load rating

Speeds

Grease	24000	min-1	Grease lubrication
--------	-------	-------	--------------------

Abutment and Fillet Dimensions

da (min.)	17	mm	Diameter of shaft abutment
da (max.)	18	mm	Diameter of shaft abutment
Da (max.)	32	mm	Diameter of housing abutment
ra (max.)	1	mm	Radius of shaft or housing fillet
Dx (min.)	0	mm	Diameter of snap ring recess in the housing
Cy (max.)	0	mm	Distance from outer ring side face to snap ring back face

Calculation factors

fo	11.1	Factor
----	------	--------

Additional information

z	6	Number of Balls
Dw	7.938	mm Ball Diameter

Mass

Mass approx.	0.06	kg	Mass approx.
--------------	------	----	--------------

