



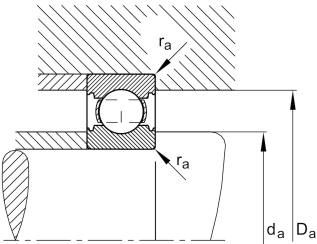
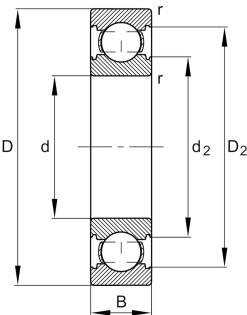
FAG

6309-C

Deep groove ball bearing

Deep groove ball bearing 63...-C, single row,
Generation C, steel sheet metal cage

Technical information



Your current product variant

Changed internal design	C	GenerationC
Sealing	Without	Not sealed
Cage	JN	Steel sheet metal
Tolerance class	P6	Class6 (P6), better than PN
Dimensional / heat stabilization	S0	Rings dimensional stabilized up to 150°
Lubricant	Without	Bearing not greased
Radial internal clearance	CN (Group N)	Normal internal clearance
Bore type	Z	Cylindrical

Main Dimensions & Performance Data

d	45 mm	Bore diameter
D	100 mm	Outside diameter
B	25 mm	Width
C _r	62,000 N	Basic dynamic load rating, radial
C _{0r}	31,500 N	Basic static load rating, radial
C _{ur}	2,190 N	Fatigue load limit, radial
n _G	10,500 1/min	Limiting speed
n _{gr}	9,100 1/min	Reference speed
≈m	0.802 kg	Weight



Mounting dimensions

$d_{a\ min}$	54 mm	Minimum diameter shaft shoulder
$D_{a\ max}$	91 mm	Maximum diameter of housing shoulder
$r_{a\ max}$	1.5 mm	Maximum fillet radius

Dimensions

r_{\min}	1.5 mm	Minimum chamfer dimension
D_1	83.6 mm	Shoulder diameter outer ring
D_2	86.37 mm	Caliber diameter outer ring
d_1	62.25 mm	Shoulder diameter inner ring
d_2	60.33 mm	Caliber diameter inner ring

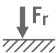

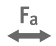



Temperature range

T_{\min}	-30 °C	Operating temperature min.
T_{\max}	150 °C	Operating temperature max.

Calculation factors

f_0	12.9	Calculation factor
-------	------	--------------------

Characteristics

	Radial load
	Axial load in one direction
	Axial load in two directions
	Grease Lubrication
	Oil Lubrication
	Not sealed