

Product Compliance

[For compliance documentation, visit the product page on TE.com>](#)

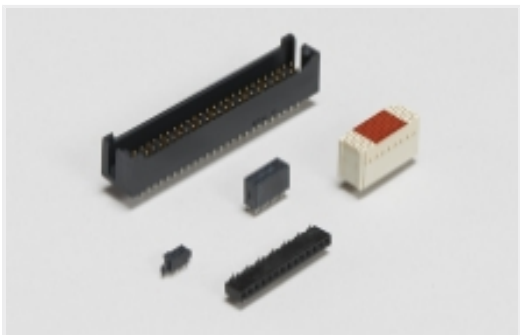
EU RoHS Directive 2011/65/EU	Not Compliant
EU ELV Directive 2000/53/EC	Not Compliant
China RoHS 2 Directive MIIT Order No 32, 2016	Restricted Materials Above Threshold
EU REACH Regulation (EC) No. 1907/2006	Current ECHA Candidate List: JAN 2025 (247) Candidate List Declared Against: JUN 2020 (209) SVHC > Threshold: Pb (3.7% in Component part) Pb (13% in Component part) Pb (.6% in Component part) Article Safe Usage Statements: Do not eat, drink or smoke when using this product. Wash thoroughly after handling. Recycle if possible and dispose of the article by following all applicable governmental regulations relevant to your geographic location.
Halogen Content	Not Yet Reviewed for halogen content
Solder Process Capability	Hand solderable with tin/lead solder

Product Compliance Disclaimer

This information is provided based on reasonable inquiry of our suppliers and represents our current actual knowledge based on the information they provided. This information is subject to change. The part numbers that TE has identified as EU RoHS compliant have a maximum concentration of 0.1% by weight in homogenous materials for lead, hexavalent chromium, mercury, PBB, PBDE, DBP, BBP, DEHP, DIBP, and 0.01% for cadmium, or qualify for an exemption to these limits as defined in the Annexes of Directive 2011/65/EU (RoHS2). Finished electrical and electronic equipment products will be CE marked as required by Directive 2011/65/EU. Components may not be CE marked. Additionally, the part numbers that TE has identified as EU ELV compliant have a maximum concentration of 0.1% by weight in homogenous materials for lead, hexavalent chromium, and mercury, and 0.01% for cadmium, or qualify for an exemption to these limits as defined in the Annexes of Directive 2000/53/EC (ELV). Regarding the REACH Regulation, the information TE provides on SVHC in articles for this part number is based on the latest European Chemicals Agency (ECHA) 'Guidance on requirements for substances in articles' posted at this URL: <https://echa.europa.eu/guidance-documents/guidance-on-reach>



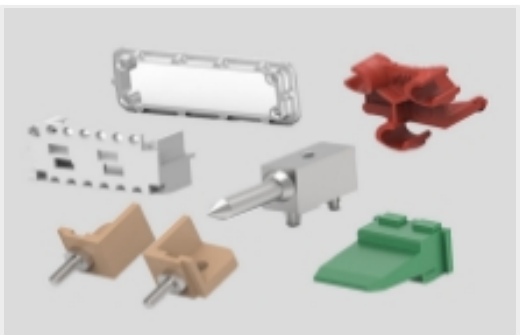
Also in the Series | Z-PACK 2mm HM



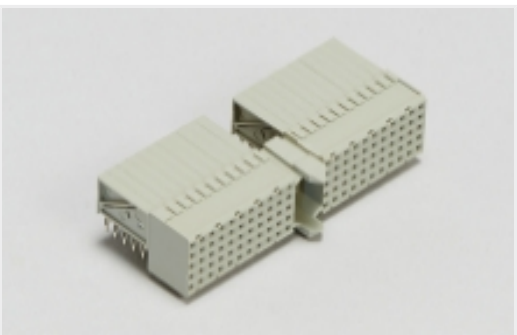
Board-to-Board Headers & Receptacles(46)



Connector Contacts(2)



Connector Hardware(91)



Hard Metric Backplane Connectors (266)

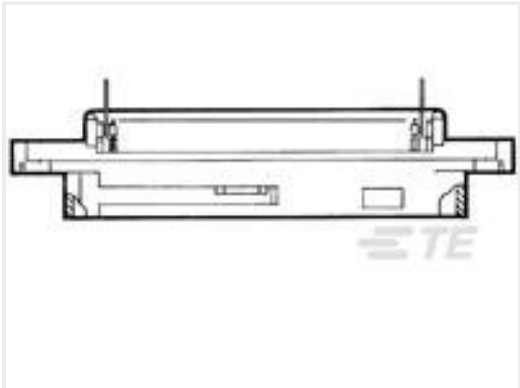


Power Contacts(2)



Rectangular Power Connectors(46)

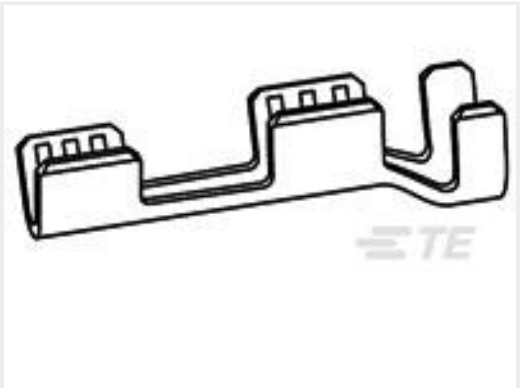
Customers Also Bought



TE Part #5552126-1
ASSY, PLUG, 50 POS, EDGE MTG



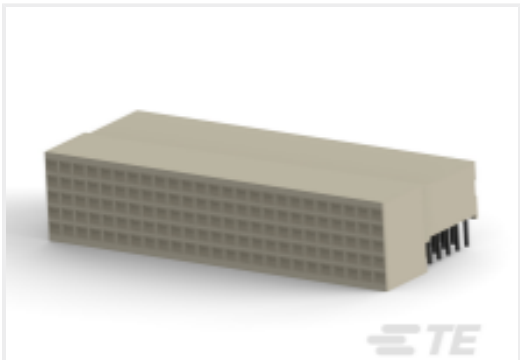
TE Part #2-2170705-5
CAGE ASSY, QSFP28 1X1, SPRING, HS, LP



TE Part #62419-3
SPLICE 18-16/18-14 AWG .020 NPST



TE Part #103166-5
14 MODII HDR DRRA SHRD .100CL



TE Part #CAT-472-Z12553
HM Receptacle Connector: Traditional Backplane, Coplanar, 2mm



TE Part #8-1734516-0
RCPT, 2MM, 30P, VRT SMT, 30Au", W/O LOCK



TE Part #5227820-1
TNC PCB VERT



TE Part #2198234-3
SFP+ Enhanced 1x4, Net Heatsink, LP



TE Part #1050903-1
2002 7188 02



Documents

Product Drawings

TYPE M RECPT CONT R/A PCB MNT

English

CAD Files

3D PDF

3D

Customer View Model

ENG_CVM_CVM_148513-1_D.2d_dxf.zip

English

Customer View Model

ENG_CVM_CVM_148513-1_D.3d_igs.zip

English

Customer View Model

ENG_CVM_CVM_148513-1_D.3d_stp.zip

English

By downloading the CAD file I accept and agree to the [Terms and Conditions](#) of use.

Product Specifications

Application Specification

English