

FEATURES

- Pedal operation.
- 3-position pedal operation with spring return (advance, hold and release)
- Single-acting cylinder compatibility
- Compact and robust construction for heavy duty and long durability
- Easy maintenance
- Relief safety valve on the lid
- Maximum Working Pressure 700 bar
- Made in Italy

RS PRO Portable Hydraulic Foot Pump

RS Stock No.: 0309336



RS Professionally Approved Products bring to you professional quality parts across all product categories. Our product range has been tested by engineers and provides a comparable quality to the leading brands without paying a premium price.

Product Description

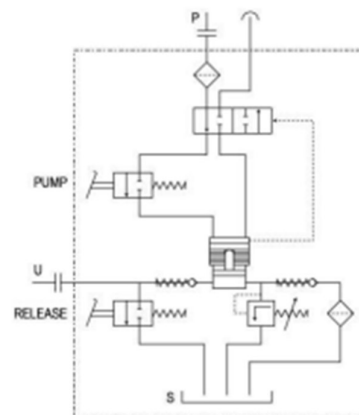
RS PRO Hydraulic Foot Pump is a single-acting pump with a three-position foot pedal and a max working pressure 700 bar.

Applications: : Industrial tools, lifting systems, car repairers, clamping systems, hydraulic equipment (presses, jacks, ...), bead brakers, Automotive

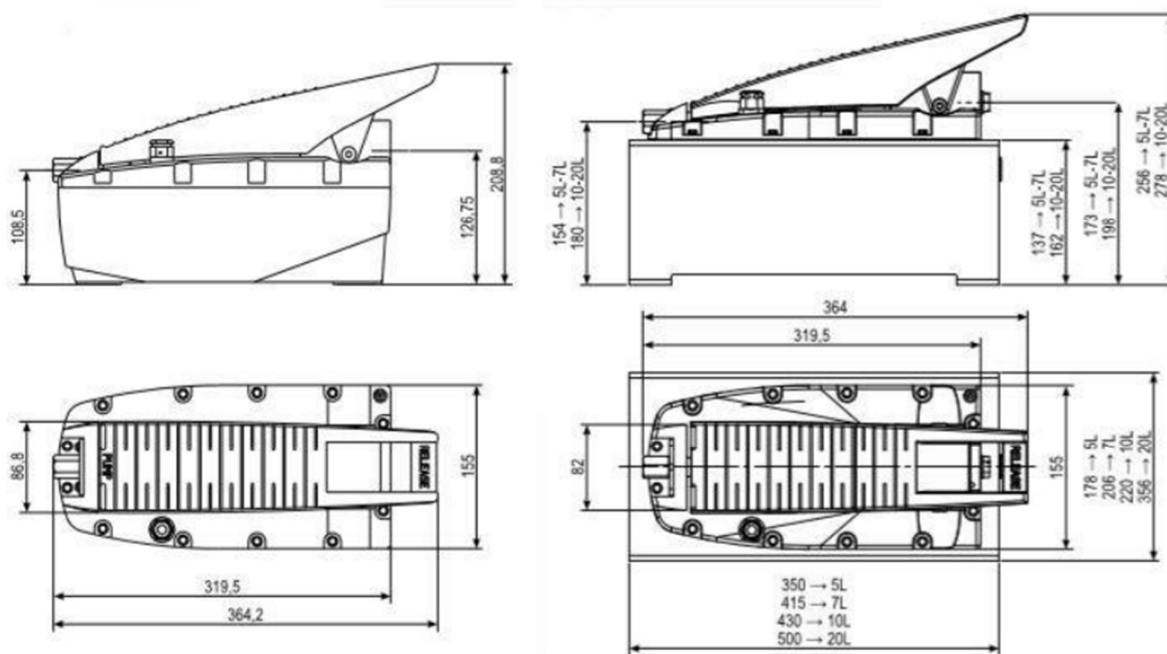
- Pedal operation
- Unmistakable pedal design with integrated handle for portability
- 3-position pedal operation with spring return (advance, hold and release)
- Single-acting cylinder compatibility (double-acting with optional in-line hand valve)
- Compact and robust construction for heavy duty and long durability
- Easy maintenance
- No air lubricated required.
- It works through the normal pneumatic network.
- Versatile use in both vertical and horizontal positions
- Vent screw on the lid for tank ventilation during use
- Relief safety valve on the lid
- Maximum oil pressure valve adjustable from the outside to protect the circuit components.
- Removable pyrex porthole level indicator for maximum easy refill
- Slots on the base support for easy installation onto the application
- Lightweight
- Low noise (75dBa)
- Various tank capacities (2.4 - 5 - 10 - 20) L for small and large cylinder

Specifications

Type	Air-Hydraulic Pump
Maximum Operating Pressure	700 bar
Single/Two Speed	Single
Cylinder Compatibility	Single Acting
Usable Oil Capacity	2.1l
Tank Capacity	2.4l
Oil Flow (Unload)	1.1 l/min
Oil Flow (Load)	0.15 l/min
Air Consumption	400 l/min
Oil Port	3/8 NPT
Energy Source	Air
Pneumatic Range (Bar)	2.8/8.3 (Max 10 bar)
Dimensions	364 x 155 x 209 mm
Weight	6.76 kg
Height	209 mm
Width	155 mm
Length	364 mm
Dimensions (Packed product)	370 x 170 x 220 mm
Outlet Type	NPT3/8



Drawings



Additional Information

Please note this is individual pump, no accessories included.

Please review our RS PRO Hydraulic Hand Pump Guide to see whole Range & Accessories available.