

COMPACTA

2198UOO023P40 60X45



BETTER MOBILITY. BETTER LIFE.

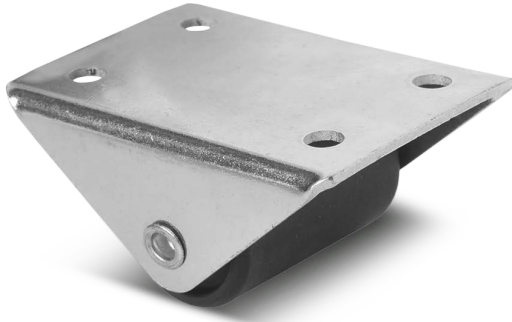


Image may differ from the original product

PERFORMANCE

| | |
|----------------------|-----------|
| Roll performance | ● ● ● ○ ○ |
| Movement noise | ● ● ● ○ ○ |
| Attrition | ● ● ● ● ● |
| Corrosion resistance | ● ● ● ○ ○ |

CORE ATTRIBUTES

| | |
|-----------------------------|-----------------------------|
| Product name | Compacta |
| Housing type | Fixed castor |
| Standard | EN12528 - Furniture Castors |
| Load capacity at 3 km/h | 15 kg |
| Load capacity Static | 30 kg |
| Temperature range (Minimum) | -40 °C |
| Temperature range (Maximum) | 80 °C |
| Overall height | 26 mm |
| Overall weight | 0.09 kg |
| Wheel width | 38 mm |

WHEEL

| | |
|-----------------------|--------------------------------|
| Body material | Polyamide |
| Tread material | Identical with wheel body |
| Bearing | Plain bearing with spacer tube |
| Axle | Riveted |
| Threadguards | Without threadguard |
| Diameter | 14 mm |
| Tread width | 14 mm |
| Hardness of tread (D) | 75 Shore D |

HOUSING

| | |
|---------------|---------------------|
| Material fork | Steel sheet, medium |
| Fork shape | Angular |

FITTING

| | |
|-----------------------------|-------------------|
| Fitting type | Rectangular plate |
| Plate length | 60 mm |
| Plate width | 45 mm |
| Plate hole length (Minimum) | 24 mm |
| Plate hole length (Maximum) | 41 mm |