

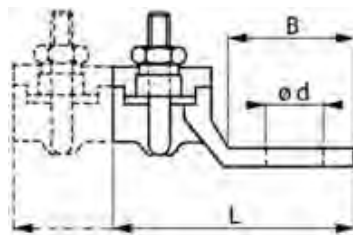


# Mechanical Connectors

## General features

- ✓ Mechanical brass connectors are normally fitted with 60 Kg zinc-plated U bolts.

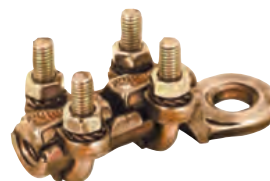
For bronze U bolts please suffix the PN with the letter « B ».





## Ring tongue lugs



1BR Series



2BR Series

 mm <sup>2</sup>	Item code	Part No.		Number of U bolts	ØB	L	Ød (special)
6 - 50	7600401	1BR921	50	1	21	43	9 (11)
6 - 50	7600402	1BR921B	50	1	21	43	9 (11)
6 - 70	7600411	1BR1125	25	1	25	55	11 (9-13-15)
6 - 70	7600412	1BR1125B	25	1	25	55	11 (9-13-15)
16 - 120	7600421	1BR1430	10	1	30	64	13 (15)
16 - 120	7600422	1BR1430B	10	1	30	64	13 (15)
25 - 150	7600431	1BR1632	10	1	32	70	13 (15)
25 - 150	7600432	1BR1632B	10	1	32	70	13 (15)
25 - 185	7600441	1BR1836	10	1	36	75	13 (15)
25 - 185	7600442	1BR1836B	10	1	36	75	13 (15)
70 - 300	7600451	1BR2240	10	1	40	85	19 (15-17)
70 - 300	7600452	1BR2240B	10	1	40	85	19 (15-17)
6 - 50	7600461	2BR921	25	2	21	64	9 (11-13)
6 - 50	7600462	2BR921B	25	2	21	64	9 (11-13)
25 - 150	7600481	2BR1632	10	2	32	100	13 (15)
25 - 150	7600482	2BR1632B	10	2	32	100	13 (15)
70 - 300	7600491	2BR2240	10	2	40	114	19 (15-17)
70 - 300	7600492	2BR2240B	10	2	40	114	19 (15-17)



## Square tongue lugs




1BC Series



2BC Series

 mm <sup>2</sup>	Item code	Part No.		Number of U bolts	ØB	L	Ød (special)
6 - 70	7600501	1BC253	25	1	30	60	11 (9-13)
6 - 70	7600503	1BC253B	25	1	30	60	11 (9-13)
25 - 150	7600511	1BC313	25	1	30	68	11 (9-13)
25 - 150	7600512	1BC313B	25	1	30	68	11 (9-13)
25 - 150	7600521	1BC312	25	1	40	78	13 (15)
25 - 150	7600522	1BC312B	25	1	40	78	13 (15)
25 - 185	7600531	1BC420	25	1	50	93	*
25 - 185	7600532	1BC420B	25	1	50	93	*
25 - 150	7600541	2BC312	10	2	40	108	*
25 - 150	7600542	2BC312B	10	2	40	108	*
50 - 300	7600551	2BC2300	10	2	50	125	*
50 - 300	7600552	2BC2300B	10	2	50	125	*

\* Non-drilled palm as standard.

 Conductor size (mm<sup>2</sup>)

 Packing

Unless stated otherwise, all dimensions are in millimeters.