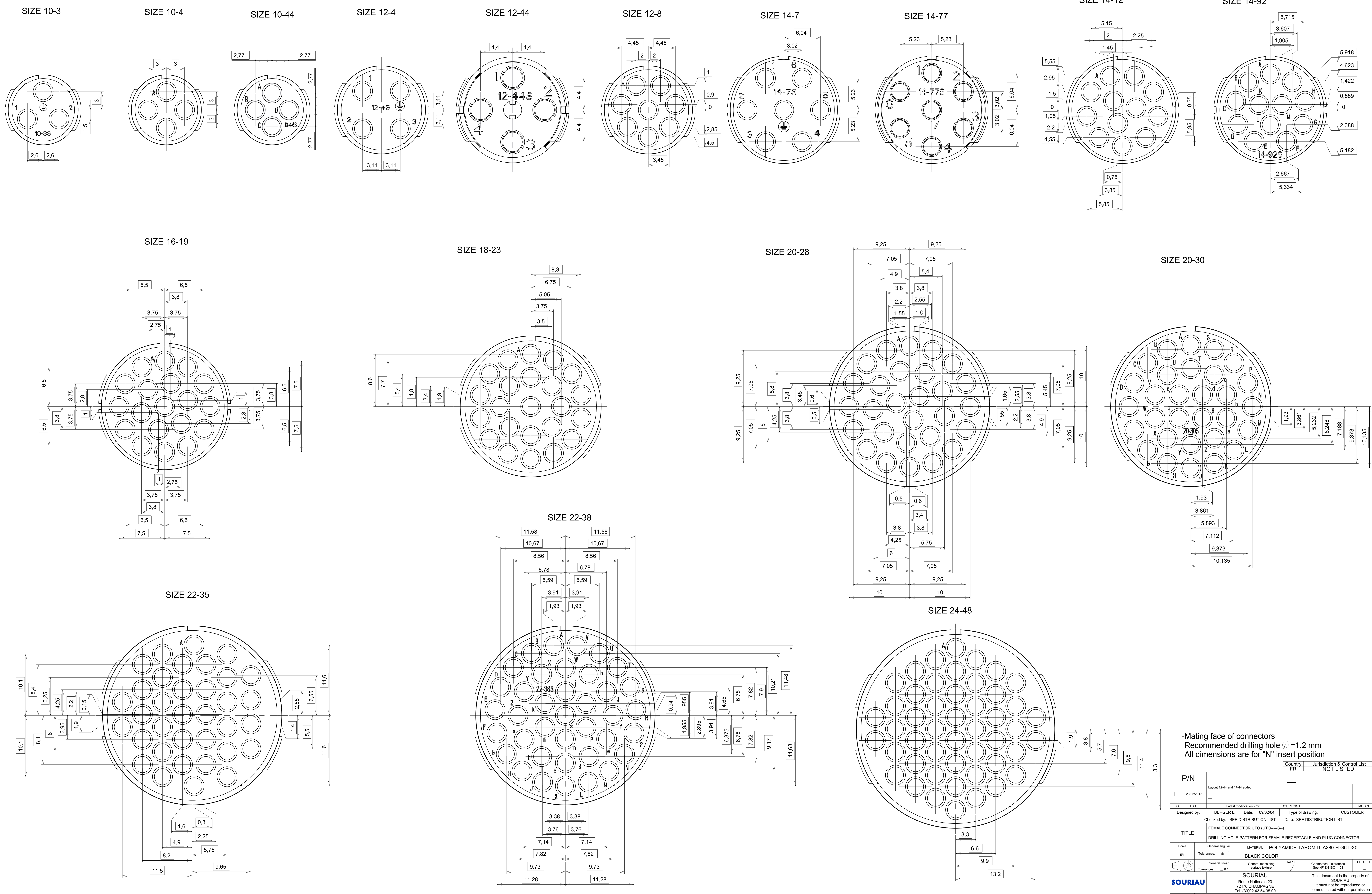


DRILLING HOLE PATTERN

(Mating Face View of female insulators)

0
6
7 --- S DRILLING HOLE PATTERN



-Mating face of connectors
-Recommended drilling hole $\phi = 1.2$ mm
-All dimensions are for "N" insert position

P/N		Country		Jurisdiction & Control List	
E 23/02/2017		FR	NOT LISTED		
ISS	DATE	Latest modification	by	COURTOS L	MOD N°
Designed by	BERGER L.	Date	09/02/04	Type of drawing	CUSTOMER
Checked by	SEE DISTRIBUTION LIST	Date	SEE DISTRIBUTION LIST		
TITLE					
FEMALE CONNECTOR UTO (UTO---S)					
DRILLING HOLE PATTERN FOR FEMALE RECEPTACLE AND PLUG CONNECTOR					
Scale	General angular	MATERIAL	POLYAMIDE-TAROMID_A280-H-G-DX0		
5/1	Tolerances : $\pm 1^\circ$	BLACK COLOR			
General linear		General machining	Ra 1.6	Geometrical Tolerances	PROJECT
Tolerances : ± 0.1		surface texture		See NF EN ISO 1101	
SOURIAU		SOURIAU		This document is the property of	
		Rue Nationale 23		SOURIAU	
		74470 CHAMPAIGNE		It must not be reproduced or	
		Tel. (33)02 43 54 35 00		communicated without permission	
FORMAT	DRAWING REFERENCE				SHEET
A0	UTO-DHP-002-C01				1/1