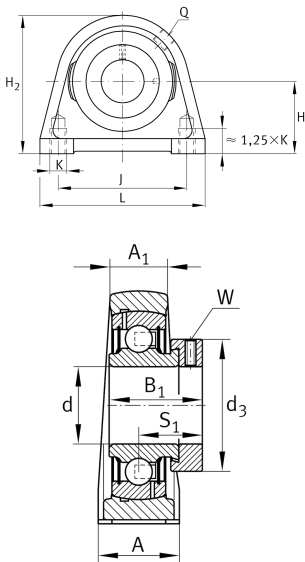
**PSHE45-XL** **Plummer block housing unit**

Plummer block housing units PSHE, cast iron housing, radial insert ball bearing with eccentric locking collar, P seals

**X-life****Technical information****Your current product variant**

|          |    |                |
|----------|----|----------------|
| Material | GG | Grey cast iron |
|----------|----|----------------|

**Main Dimensions & Performance Data**

|                |         |               |
|----------------|---------|---------------|
| d              | 45 mm   | Bore diameter |
| L              | 120 mm  | Length total  |
| H <sub>2</sub> | 107 mm  | Height        |
| ≈m             | 1.99 kg | Weight        |

**Mounting dimensions**

|   |         |                      |
|---|---------|----------------------|
| J | 95.3 mm | Distance fixing bore |
| K | M12     | Thread fixing bore   |

**Dimensions**

|                |         |                                       |
|----------------|---------|---------------------------------------|
| H              | 54 mm   | Distance shaft axis                   |
| A              | 48 mm   | Width (base)                          |
| A <sub>1</sub> | 32 mm   | Width (head)                          |
| Q              | M6      | Connection thread for lubrication     |
| B <sub>1</sub> | 43.8 mm | Locking collar total width            |
| S <sub>1</sub> | 32.8 mm | Distance of raceway to locking collar |



Additional information

|                 |                     |
|-----------------|---------------------|
| SHE09           | Housing             |
| GRAE45-XL-NPP-B | Bearing designation |

Temperature range

|                  |        |                            |
|------------------|--------|----------------------------|
| T <sub>min</sub> | -20 °C | Operating temperature min. |
| T <sub>max</sub> | 120 °C | Operating temperature max. |