

Adapter M12 socket, 8-pole, for M25 cable entry, for plastic enclosure



| | |
|---|--|
| Product brand name | SIRIUS ACT |
| Product designation | Adapter |
| Design of the product | M12 socket (female), 8-pin for M25 cable entry |
| Product type designation | 3SU1 |
| General technical data | |
| Protection class IP | IP66, IP67, IP69(IP69K) |
| Connections/Terminals | |
| Wire length | 0.5 m |
| Installation/ mounting/ dimensions | |
| Mounting height | 20 mm |
| Installation depth | 8.5 mm |
| Accessories | |
| Material of accessory | Plastic |
| Color of accessory | black |
| Certificates/approvals | |

| | | | |
|--------------------------|---------------------------|-------------------|-------------------|
| General Product Approval | Declaration of Conformity | Test Certificates | Marine / Shipping |
|--------------------------|---------------------------|-------------------|-------------------|



[Miscellaneous](#)

[Type Test Certificates/Test Report](#)



| | |
|-------------------|-------|
| Marine / Shipping | other |
|-------------------|-------|



[Confirmation](#)

Further information

Information- and Downloadcenter (Catalogs, Brochures,...)

<http://www.siemens.com/industrial-controls/catalogs>

Industry Mall (Online ordering system)

<https://mall.industry.siemens.com/mall/en/en/Catalog/product?mfb=3SU1930-0HU10-0AA0>

Cax online generator

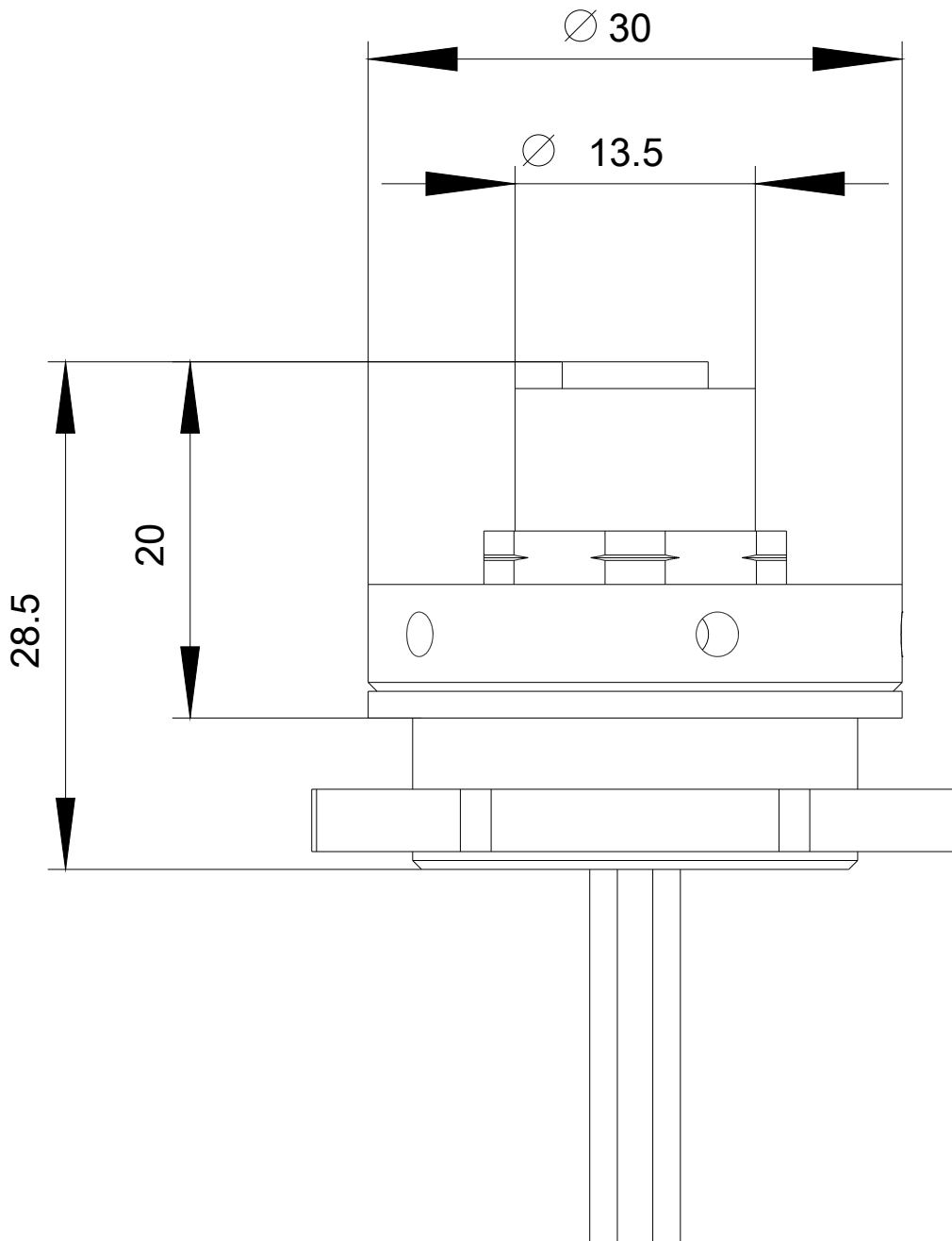
<http://support.automation.siemens.com/WW/CAXorder/default.aspx?lang=en&mfb=3SU1930-0HU10-0AA0>

Service&Support (Manuals, Certificates, Characteristics, FAQs,...)

<https://support.industry.siemens.com/cs/ww/en/ps/3SU1930-0HU10-0AA0>

Image database (product images, 2D dimension drawings, 3D models, device circuit diagrams, EPLAN macros, ...)

http://www.automation.siemens.com/bilddb/cax_de.aspx?mfb=3SU1930-0HU10-0AA0&lang=en



last modified:

09/12/2019