

11.90	14.70	505066-7010	---	---	70
10.85	13.65	505066-6410	---	---	64
10.15	12.95	505066-6010	---	Δ	60
9.80	12.60	505066-5810	---	---	58
9.10	11.90	505066-5410	---	○	54
8.40	11.20	505066-5010	---	Δ	50
8.05	10.85	505066-4810	○	---	48
7.70	10.50	505066-4610	---	○	46
7.00	9.80	505066-4210	---	---	42
6.65	9.45	505066-4010	○	---	40
6.30	9.10	505066-3810	---	---	38
5.60	8.40	505066-3410	---	○	34
4.90	7.70	505066-3010	○	---	30
3.85	6.65	505066-2410	---	Δ	24
3.50	6.30	505066-2210	---	○	22
3.15	5.95	505066-2010	---	○	20
2.80	5.60	505066-1810	---	---	18
2.45	5.25	505066-1610	○	---	16
2.10	4.90	505066-1410	---	○	14
1.75	4.55	505066-1210	○	---	12
1.40	4.20	505066-1010	---	Δ	10
0.70	3.50	505066-0610	○	---	6

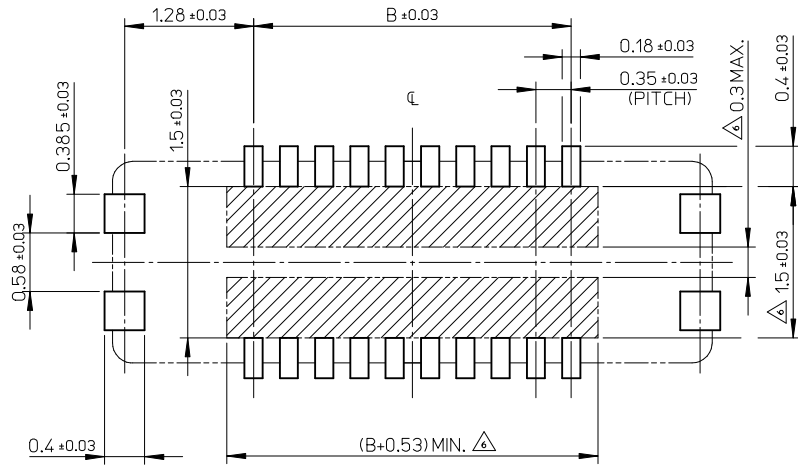
NOTES

- MATERIAL
HOUSING : LIQUID CRYSTAL POLYMER UL94V-0(COLOR : BLACK)
TERMINAL : COPPER ALLOY
FITTING NAIL : COPPER ALLOY
- PLATING
TERMINAL :
GOLD
UNDER PLATING : NICKEL
*DIVIDE INTO PARTS THE GOLD PLATING OF THE CONTACT AND THE TAIL PART BY THE NICKEL PLATING.
FITTING NAIL :
GOLD
UNDER PLATING : NICKEL
*DIVIDE INTO PARTS THE GOLD PLATING OF THE CONTACT AND THE TAIL PART BY THE NICKEL PLATING.
- APPLY FOR (CIRCUIT/2)=EVEN.
- MATE WITH : 505070-***10
- TAIL AND FITTING NAIL COPLANARITY TO BE 0.08MAXIMUM.
- PROHIBITED AREA OF PATTERN WIRING AND SOLDER.
(FOR EACH AREA, THE WIRING THAT TOUCHES ON THE SOLDER CAN BE ATTACHED, THEN COVERED WITH A FILM TO KEEP SOLDER OUT.)
- ELV and RoHS COMPLIANT.

B	A	EMBOSSED TAPE PACKAGE	HIGH VOL. TOOL	LOW VOL. TOOL	CIRCUIT
		ORDER NO.	SAMPLE PREPARATION ○ : TOOLED Δ : WORK IN PROCESS --- : TOOLING TO BE CONFIRMED		

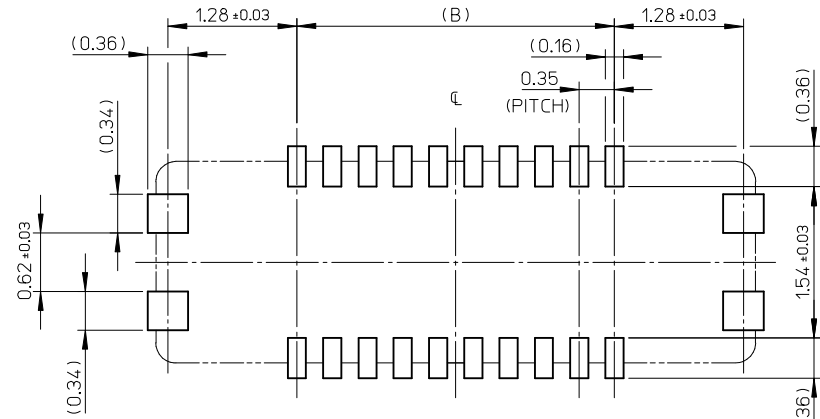
CONNECTOR SERIES No. : 505066-***09

REVISED EC NO: J2015-0801 DRWN:TSOMEYA 2014/12/18 CHKD: APPR:KMORIKAWA 2014/12/24	GENERAL TOLERANCES (UNLESS SPECIFIED)		DIMENSION STYLE MM ONLY	SCALE 20:1	DESIGN UNITS METRIC	THIRD ANGLE PROJECTION
	10 UNDER	± 0.2	DRAWN BY KSASAKI	DATE 2014/04/07	TITLE 0.35 BB CONN. H=0.6 SSB6 RP REC. ASSY	
	10 OVER 30 UNDER	± 0.25	CHECKED BY KTANAKA03	DATE 2014/04/07		
	30 OVER	± 0.3	APPROVED BY KMORIKAWA	DATE 2014/04/08		
M	DESCRIPTION	ANGULAR ± 1 °	SEE CHART		DOCUMENT NO. SD-505066-001	SHEET NO. 1 OF 2
		DRAFT WHERE APPLICABLE MUST REMAIN WITHIN DIMENSIONS	THIS DRAWING CONTAINS INFORMATION THAT IS PROPRIETARY TO MOLEX INCORPORATED AND SHOULD NOT BE USED WITHOUT WRITTEN PERMISSION			



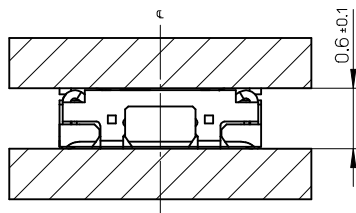
RECOMMENDED P.W.BOARD PATTERN LAYOUT (REFERENCE)

△ PROHIBITED AREA OF PATTERN WIRING AND SOLDER.
(FOR EACH AREA, THE WIRING THAT TOUCHES ON THE SOLDER
CAN BE ATTACHED, THEN COVERED WITH A FILM TO KEEP SOLDER OUT.)



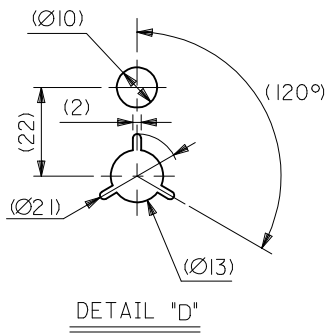
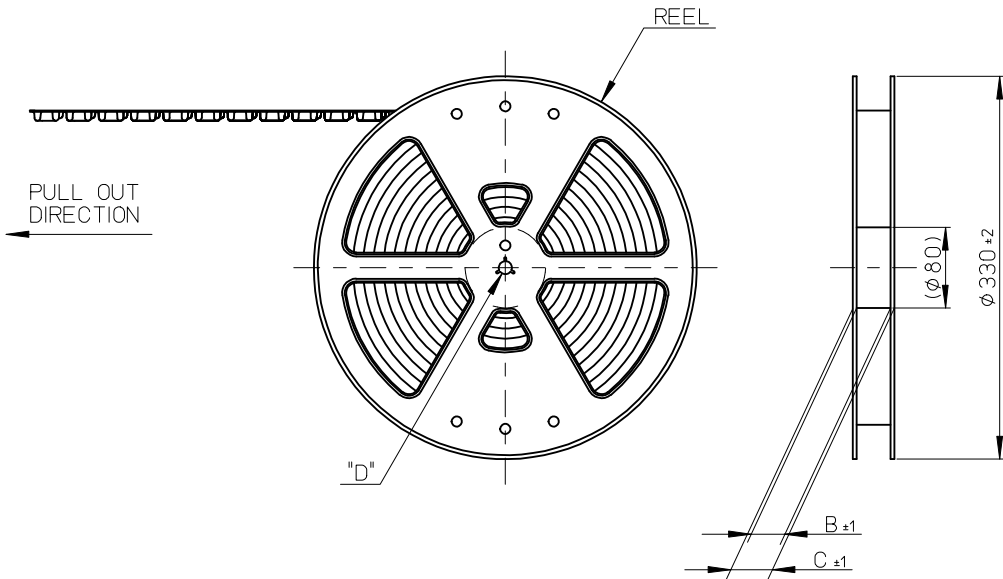
RECOMMENDED METAL MASK LAYOUT (REFERENCE)

RECOMMENDED THICKNESS OF METAL MASK : t=0.08mm
RECOMMENDED OPEN APERTURE RATIO OF METAL MASK : 80%



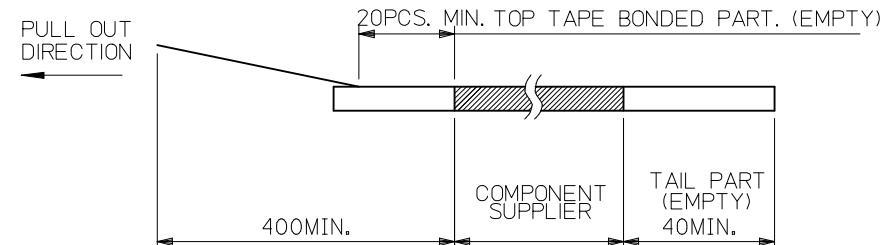
MATED CONDITION

SEE SHEET 1 OF 2 EC NO: J2015-0801 DRWN: TSOMEYA 2014/12/18 CHKD: APPR: KMORIKAWA 2014/12/24	GENERAL TOLERANCES (UNLESS SPECIFIED)		DIMENSION STYLE MM ONLY	SCALE 20:1	DESIGN UNITS METRIC	THIRD ANGLE PROJECTION	
	10 UNDER	± 0.2	DRAWN BY KSASAKI	DATE 2014/04/07	TITLE 0.35 BB CONN. H=0.6 SSB6 RP REC. ASSY		
	10 OVER 30 UNDER	± 0.25	CHECKED BY KTANAKA03	DATE 2014/04/07			
	30 OVER	± 0.3	APPROVED BY KMORIKAWA	DATE 2014/04/08			
ANGULAR	± 1 °	MATERIAL NO. SEE SHEET 1		DOCUMENT NO. SD-505066-001	SHEET NO. 2 OF 2		
DRAFT WHERE APPLICABLE MUST REMAIN WITHIN DIMENSIONS		THIS DRAWING CONTAINS INFORMATION THAT IS PROPRIETARY TO MOLEX INCORPORATED AND SHOULD NOT BE USED WITHOUT WRITTEN PERMISSION					

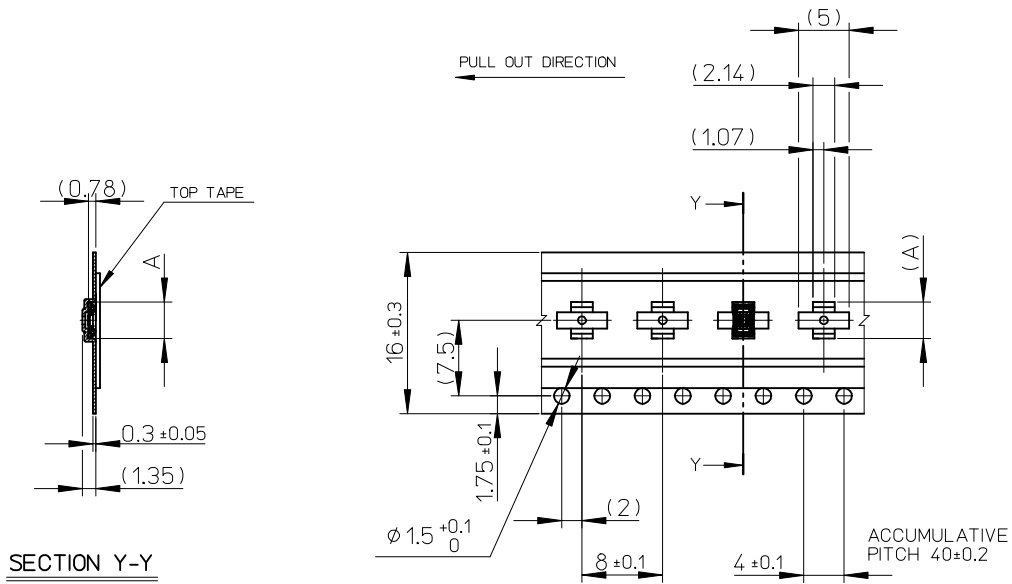


NOTES

- RE DETAILED DIMENSION, SEE PRODUCT DRAWING.
- NUMBER OF CONNECTORS : 3000PCS/REEL
- LEAD TAPE LENGTH
 - 400MIN.
 - 20PCS. MIN. TOP TAPE BONDED PART. (EMPTY)
 - COMPONENT SUPPLIER
 - TAIL PART (EMPTY) 40MIN.
- TOP TAPE PEEL FORCE IS DEFINED BY IEC60286-3.
- MATERIAL
 - CARRIER TAPE : POLYSTYRENE
 - TOP TAPE : PET , OTHER
 - REEL : POLYSTYRENE (PS) <RECYCLE MATERIAL CONTAINED>
- ELV AND RoHS COMPLIANT

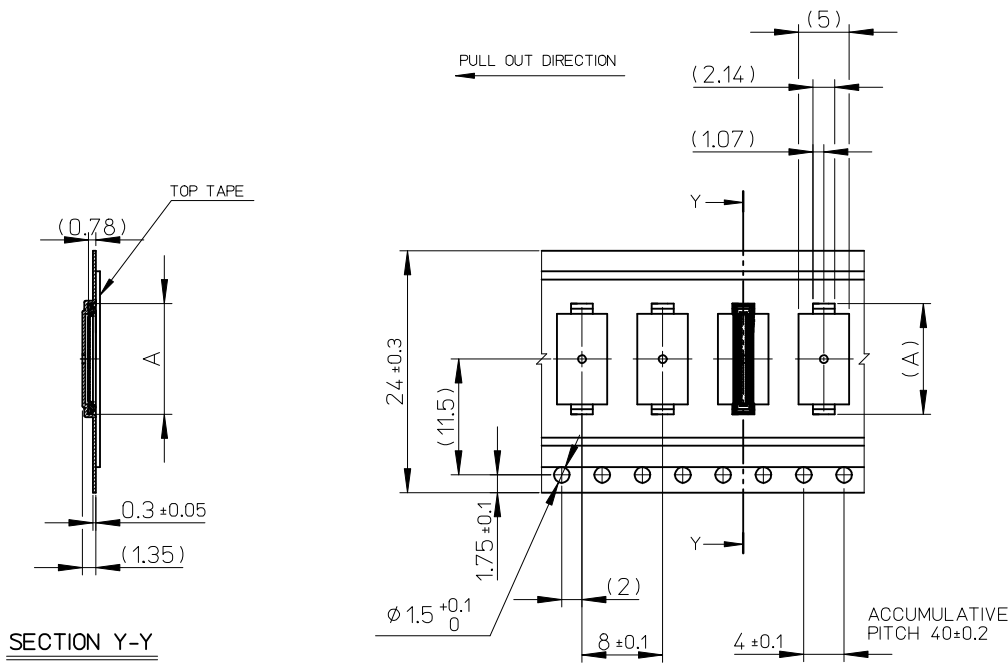


REVISED EC NO: J2015-0801 DRWN: ISOMEYA 2014/12/18 CHKD: APPR: KMORIKAWA 2014/12/24 REV: G	GENERAL TOLERANCES (UNLESS SPECIFIED)		DIMENSION STYLE MM ONLY		SCALE 1:5	MODEL NO. 505066-**10	DESIGN UNITS METRIC	THIRD ANGLE PROJECTION
	10 UNDER	± 0.2	DRAWN BY KSASAKI	DATE 2014/04/07	TITLE 0.35 BB CONN. H=0.6 SSB6 RP REC. ASSY EMBSTP PKG			
	10 OVER 30 UNDER	± 0.25	CHECKED BY KTANAKA03	DATE 2014/04/07	DOCUMENT NO. SD-505066-002 SHEET NO. 1 OF 3			
	30 OVER	± 0.3	APPROVED BY KMORIKAWA	DATE 2014/04/08				
ANGULAR $\pm 1^\circ$		DRAFT WHERE APPLICABLE MUST REMAIN WITHIN DIMENSIONS		SEE CHART		THIS DRAWING CONTAINS INFORMATION THAT IS PROPRIETARY TO MOLEX INCORPORATED AND SHOULD NOT BE USED WITHOUT WRITTEN PERMISSION		



16	21.4	17.4	7.82	505066-3010	o	---	30		
			6.77	505066-2410	---	Δ	24		
			6.42	505066-2210	---	o	22		
			6.07	505066-2010	---	o	20		
			5.72	505066-1810	---	---	18		
			5.37	505066-1610	o	---	16		
			5.02	505066-1410	---	o	14		
			4.67	505066-1210	o	---	12		
			4.32	505066-1010	---	Δ	10		
3.62	505066-0610	o	---	6					
キャリアテープ幅 CARRIER TAPE WIDTH			C	B	(A)	MATERIAL No.	HIGH VOL. TOOL	LOW VOL. TOOL	CIRCUIT
SAMPLE PREPARATION									

SEE SHEET 1 EC NO: J2015-0801 DRWN: TSOMEYA 2014/12/18 CHKD: APPR: KMORIKAWA 2014/12/24	GENERAL TOLERANCES (UNLESS SPECIFIED)		DIMENSION STYLE MM ONLY		SCALE 2:1	DESIGN UNITS METRIC	THIRD ANGLE PROJECTION		
	10 UNDER	± 0.2	DRAWN BY	DATE	TITLE				
	10 OVER 30 UNDER	± 0.25	KSASAKI	2014/04/07	0.35 BB CONN. H=0.6 SSB6 RP REC. ASSY EMBSTP PKG				
	30 OVER	± 0.3	CHECKED BY	DATE					
	ANGULAR	± 1 °	KTANAKA03	2014/04/07					
DRAFT WHERE APPLICABLE MUST REMAIN WITHIN DIMENSIONS		APPROVED BY	DATE	DOCUMENT NO.			SHEET NO.		
		KMORIKAWA	2014/04/08	SD-505066-002			2 OF 3		
		MATERIAL NO.	THIS DRAWING CONTAINS INFORMATION THAT IS PROPRIETARY TO MOLEX INCORPORATED AND SHOULD NOT BE USED WITHOUT WRITTEN PERMISSION						
		SIZE	A3						



24	29.4	25.4	13.77	505066-6410	---	---	64		
			13.07	505066-6010	---	Δ	60		
			12.02	505066-5410	---	○	54		
			11.32	505066-5010	---	Δ	50		
			10.99	505066-4810	○	---	48		
			10.62	505066-4610	---	○	46		
			9.92	505066-4210	---	---	42		
			9.57	505066-4010	○	---	40		
8.52	505066-3410	---	○	34					
キャリアテープ幅 CARRIER TAPE WIDTH			C	B	(A)	MATERIAL No.	HIGH VOL. TOOL	LOW VOL. TOOL	CIRCUIT
SAMPLE PREPARATION									

SEE SHEET 1 EC NO: J2015-0801 DRWN: ISOMEYA 2014/12/18 CHKD: APPR: KMORIKAWA 2014/12/24 G	DESCRIPTION REV	GENERAL TOLERANCES (UNLESS SPECIFIED)		DIMENSION STYLE MM ONLY		SCALE 2:1	DESIGN UNITS METRIC	THIRD ANGLE PROJECTION		
		10 UNDER	±0.2	DRAWN BY	DATE	TITLE				
		10 OVER 30 UNDER	±0.25	KASAKI	2014/04/07	0.35 BB CONN. H=0.6 SSB6 RP REC. ASSY EMBSTP PKG molex				
		30 OVER	±0.3	CHECKED BY	DATE					
		ANGULAR	±1°	KTANAKA03	2014/04/07	DOCUMENT NO. SD-505066-002 SHEET NO. 3 OF 3				
DRAFT WHERE APPLICABLE MUST REMAIN WITHIN DIMENSIONS		APPROVED BY	DATE							
		KMORIKAWA	2014/04/08	MATERIAL NO. SEE CHART THIS DRAWING CONTAINS INFORMATION THAT IS PROPRIETARY TO MOLEX INCORPORATED AND SHOULD NOT BE USED WITHOUT WRITTEN PERMISSION						