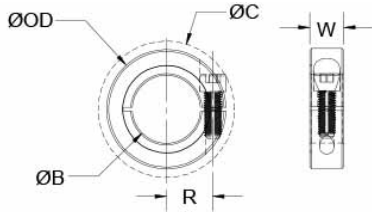




## ENCL20-8MM-A

Ruland ENCL20-8MM-A, 8mm Thin Line Shaft Collar, Aluminum, One-Piece Clamp Style, 20mm OD, 5.5mm Width



### Beschreibung

Ruland ENCL20-8MM-A is a one-piece shaft collar with a 8mm bore, 20mm OD, and 5.5mm width. The thin line design reduces weight and allows for use in confined spaces. It has the clamp style benefits of not marring the shaft, easy removability, and indefinite adjustability while commonly being used for guiding, spacing, stopping, mounting, and component alignment. Equipment manufacturers benefit from the tightly controlled face to bore perpendicularity (TIR of  $\leq .002''$ ). Perpendicularity is critical for alignment when the shaft collar is used as a load bearing face, mechanical stop, or for mounting components such as gears or bearings. Proprietary processes have been developed by Ruland to maintain superior fit, finish, and holding power. ENCL20-8MM-A is stamped with the Ruland name for ease of identification. Forged screws test beyond DIN 912 12.9 standards to ensure maximum holding power. ENCL20-8MM-A is machined from solid bar stock to a fine burr free finish and sourced exclusively from North American mills. Ruland uses high grade 2024 aluminum for increased screw seating torque. It is RoHS2 and REACH compliant and manufactured in our Marlborough, MA factory under strict controls using proprietary processes.

### Product Specifications

<b>Bore B</b>	8 mm	<b>Bore Tolerance</b>	+0,050 mm / +,012 mm
<b>Outer Diameter OD</b>	20 mm	<b>Clearance Diameter C MAX</b>	21,50 mm
<b>Width W</b>	5,5 mm	<b>Width Tolerance</b>	+0,076 mm / -,254 mm
<b>Forged Clamp Screw</b>	M2x6	<b>Screw Material</b>	Alloy Steel
<b>Hex Wrench Size</b>	1,5 mm	<b>Screw Finish</b>	Black Oxide
<b>Seating Torque</b>	0,6 Nm	<b>Screw Location R</b>	7,75 mm
<b>Number of Screws</b>	1 ea	<b>Material Specification</b>	2024-T351 Bar
<b>Temperature</b>	Aluminum	<b>Finish Specification</b>	Bright
<b>Country of Origin</b>	USA	<b>Weight</b>	0.0090
<b>UPC</b>	63452913783		