

Regulations No.	IC3F5443	Total Pages	Page
		17	1

Product Standards

Part No.	AN26018A
Package Code No.	SSMINI-5DC

Semiconductor Company
Panasonic Corporation

Established by	Applied by	Checked by	Prepared by
<i>H. Shidooka</i>	M.Hiramatsu	M.Ishida	T.Nakamura

2009-09-04	
Established	Revised

	<h1>Product Standards</h1>	AN26018A	
		Total Pages	Page
		17	2

Contents

■ Overview	3
■ Features	3
■ Applications	3
■ Package	3
■ Type	3
■ Application Circuit Example (Block Diagram)	4
■ Pin Descriptions	5
■ Absolute Maximum Ratings	6
■ Operating Supply Voltage Range	6
■ Allowable Voltage Range	7
■ Electrical Characteristics	8
■ Electrical Characteristics (Reference values for design)	10
■ Control Pins Mode Table	13
■ Truth Table	13
■ Test Circuit Diagram	14
■ Technical Data	16
• I/O block circuit diagram and pin function descriptions.....	16
■ Usage Notes	17

2009-09-04		
Established	Revised	

	<h1>Product Standards</h1>	<h2>AN26018A</h2>	
		Total Pages	Page
		17	3

AN26018A

LNA IC for UHF Band (400 MHz to 800 MHz) Applications

■ Overview

- AN26018A is LNA-IC for UHF Band (400 MHz to 800 MHz) Applications.
- Realizing high performance by using SiGe Bi-CMOS process ($f_T = 90$ GHz, $f_{max} = 140$ GHz).
- High/Low Gain-mode is changeable, controlled by integrated CMOS logic circuit.
- Achieving miniaturization by using small size package.

■ Features

- Low voltage operation +2.85 V typ.
- Low current consumption 3.0 mA typ. (High-Gain mode)
0.1 μ A typ. (Low-Gain mode)
- High gain 14.5 dB typ. fRX = 620 MHz (High-Gain mode)
- Low noise figure 1.50 dB typ. fRX = 620 MHz (High-Gain mode)
- Low distortion -8.0 dBm typ. fRX = 620 MHz (High-Gain mode)
(IIP3 +10 MHz offset)
- Small package

■ Applications

- UHF Band (400 MHz to 800 MHz) Applications

■ Package

- 5 pin Plastic Small Surface Mount Package (SMINI Type)

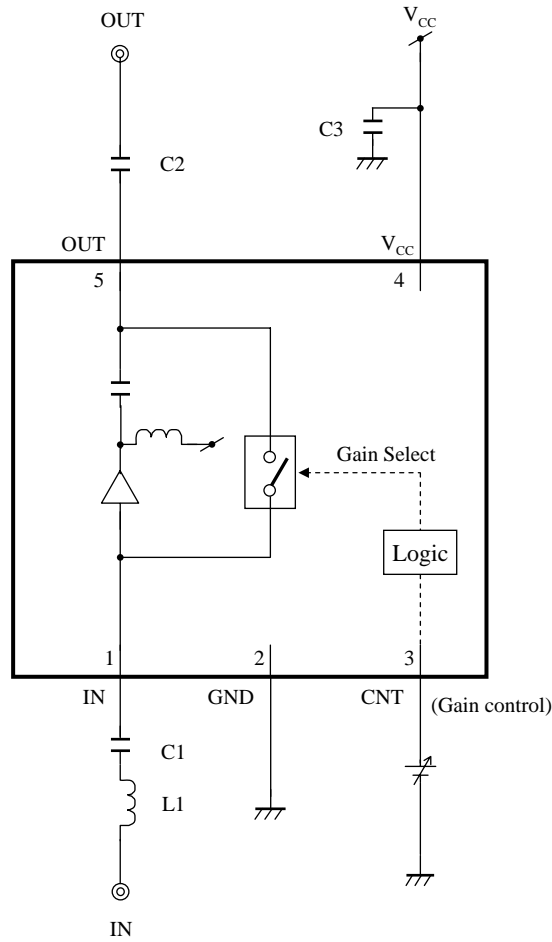
■ Type

- Bi-CMOS IC

2009-09-04		
Established	Revised	

	<h1>Product Standards</h1>	<h2>AN26018A</h2>	
		Total Pages	Page
		17	4

■ Application Circuit Example (Block Diagram)



- Notes)
- This application circuit is shown as an example but does not guarantee the design for mass production set.
 - This block diagram is for explaining functions. The part of the block diagram may be omitted, or it may be simplified.
 - External components : See page 15

2009-09-04		
Established	Revised	

	<h1>Product Standards</h1>	<h2>AN26018A</h2>	
		Total Pages	Page
		17	5

■ Pin Descriptions

Pin No.	Pin name	Type	Description
1	IN	Input	RF Input
2	GND	Ground	GND
3	CNT	Input	High-Gain / Low-Gain SW
4	V _{CC}	Power Supply	V _{CC}
5	OUT	Output	RF Output

2009-09-04		
Established	Revised	

	<h1>Product Standards</h1>	<h2>AN26018A</h2>	
		Total Pages	Page
		17	6

■ Absolute Maximum Ratings

Note) Absolute maximum ratings are limit values which are not destructed, and are not the values to which operation is guaranteed.

A No.	Parameter	Symbol	Rating	Unit	Notes
1	Supply voltage	V_{CC}	3.6	V	*1
2	Supply current	I_{CC}	18	mA	—
3	Power dissipation	P_D	66	mW	*2
4	Operating ambient temperature	T_{opr}	-20 to +70	°C	*3
5	Storage temperature	T_{stg}	-40 to +125	°C	*3

Notes) *1 : The values under the condition not exceeding the above absolute maximum ratings and the power dissipation.

*2 : The power dissipation shown is the value at $T_a = 70^\circ\text{C}$ for the independent (unmounted) IC package.

When using this IC, refer to the P_D - T_a diagram of the package standard and design the heat radiation with sufficient margin so that the allowable value might not be exceeded based on the conditions of power supply voltage, load, and ambient temperature.

*3 : Except for the power dissipation, operating ambient temperature, and storage temperature, all ratings are for $T_a = 25^\circ\text{C}$.

■ Operating Supply Voltage Range

Parameter	Symbol	Range	Unit	Notes
Supply voltage range	V_{CC}	2.70 to 3.00	V	*

Note) * : The values under the condition not exceeding the above absolute maximum ratings and the power dissipation

2009-09-04		
Established	Revised	

	<h1>Product Standards</h1>	<h2>AN26018A</h2>	
		Total Pages	Page
		17	7

■ Allowable Voltage Range

- Notes) • Allowable current and voltage ranges are limit ranges which do not result in damages to this IC, and IC operation is not guaranteed within these limit ranges.
- Do not apply voltage to N.C. pins.
 - Voltage values are with respect to the GND.
 - Applying external voltage to any pin not mentioned below leads to the malfunction and the damage of the device.
 - Below ratings are specified for prevention of malfunction and stress, not for guaranteed operation.

Pin No.	Pin name	Rating	Unit	Notes
1	IN	—	V	*1
2	GND	0	V	*2
3	CNT	-0.3 to (V _{CC})	V	—
5	OUT	-0.3 to (V _{CC})	V	*3

- Notes) *1 : RF signal input pin. Do not apply DC current.
*2 : Same as GND pin.
*3 : RF signal output pin. Do not apply DC current.

2009-09-04		
Established	Revised	

	<h1>Product Standards</h1>	<h2>AN26018A</h2>	
		Total Pages	Page
		17	8

■ Electrical Characteristics at $V_{CC} = 2.85\text{ V}$

Note) $T_a = 25^\circ\text{C} \pm 2^\circ\text{C}$ unless otherwise specified.

B No.	Parameter	Symbol	Test Circuit	Conditions	Limits			Unit	Notes
					Min	Typ	Max		
DC electrical characteristics									
DC-1	Supply current HG	I_{CCH}	1	V_{CC} current at High-Gain mode No input signal	—	3.0	4.0	mA	—
DC-2	Supply current LG	I_{CCL}	1	V_{CC} current at Low-Gain mode No input signal	—	0.1	9.5	μA	—
DC-3	Input voltage (High-Gain mode)	V_{IH}	1	—	1.40	2.85	—	V	—
DC-4	Input voltage (Low-Gain mode)	V_{IL}	1	—	—	0.0	0.55	V	—
DC-5	SW current (High)	I_{IH}	1	Current at CNT pin $V_{IH} = V_{CC}$	—	11	40	μA	—

2009-09-04		
Established	Revised	

	<h1>Product Standards</h1>	<h2>AN26018A</h2>	
		Total Pages	Page
		17	9

■ Electrical Characteristics (continued) at $V_{CC} = 2.85\text{ V}$

Note) $T_a = 25^{\circ}\text{C} \pm 2^{\circ}\text{C}$, $f_{RX} = 620\text{ MHz}$, $PRX = -30\text{ dBm}$, CW unless otherwise specified.

B No.	Parameter	Symbol	Test Circuit	Conditions	Limits			Unit	Notes
					Min	Typ	Max		
LNA AC electrical characteristics									
A-1	Power Gain HG	GHS	1	High-Gain mode $f = f_{RX}$	12.5	14.5	16.5	dB	—
A-2	Power Gain LG	GLS	1	Low-Gain mode $f = f_{RX}$, $PRX = -20\text{ dBm}$	-2.0	-1.5	—	dB	—
A-3	IIP3 +10 MHz offset	IIP31S	1	$f1 = f_{RX} + 10\text{ MHz}$ $f2 = f_{RX} + 20\text{ MHz}$ Input 2 signals ($f1, f2$)	-14.5	-8.0	—	dBm	—

2009-09-04		
Established	Revised	

<h1 style="margin: 0;">Product Standards</h1>		AN26018A	
		Total Pages	Page
		17	10

■ **Electrical Characteristics (Reference values for design) at $V_{CC} = 2.85\text{ V}$**

Notes) $T_a = 25^\circ\text{C} \pm 2^\circ\text{C}$, fRX = 470 MHz, 620 MHz, 770 MHz, PRX = -30 dBm, CW unless otherwise specified.

The characteristics listed below are reference values derived from the design of the IC and are not guaranteed by inspection.

If a problem does occur related to these characteristics, we will respond in good faith to user concerns.

B No.	Parameter	Symbol	Test Circuit	Conditions	Reference values			Unit	Notes
					Min	Typ	Max		
LNA AC electrical characteristics									
C-1	Power Gain HG	GH	1	High-Gain mode $f = \text{fRX}$	12.0	14.5	17.0	dB	—
C-2	Power Gain LG	GL	1	Low-Gain mode $f = \text{fRX}$, PRX = -20 dBm	-2.5	-1.5	—	dB	—
C-3	Noise Figure HG	NFH	1	High-Gain mode $f = \text{fRX}$	—	1.5	1.9	dB	*1
C-4	Noise Figure LG	NFL	1	Low-Gain mode $f = \text{fRX}$	—	1.5	2.5	dB	—
C-5	IIP3 +10 MHz offset HG	IIP3H1	1	High-Gain mode $f1 = \text{fRX} + 10\text{ MHz}$ $f2 = \text{fRX} + 20\text{ MHz}$ Input 2 signals (f1, f2)	-16.5	-8.0	—	dBm	—
C-6	IIP3 -10 MHz offset HG	IIP3H2	1	High-Gain mode $f1 = \text{fRX} - 10\text{ MHz}$ $f2 = \text{fRX} - 20\text{ MHz}$ Input 2 signals (f1, f2)	-17.0	-8.5	—	dBm	—
C-7	Input P1dB	IP1dBH	1	High-Gain mode $f = \text{fRX}$	-11	-5	—	dBm	—
C-8	Reverse Isolation HG	ISOH	1	High-Gain mode $f = \text{fRX}$	—	-24	-18	dB	—
C-9	Reverse Isolation LG	ISOL	1	Low-Gain mode $f = \text{fRX}$	—	-1.6	-1.0	dB	—
C-10	Input Return Loss HG	S11H	1	High-Gain mode $f = \text{fRX}$	5.0	9.5	—	dB	—
C-11	Input Return Loss LG	S11L	1	Low-Gain mode $f = \text{fRX}$	12	20	—	dB	—
C-12	Output Return Loss HG	S22H	1	High-Gain mode $f = \text{fRX}$	7	23	—	dB	—
C-13	Output Return Loss LG	S22L	1	Low-Gain mode $f = \text{fRX}$	10	12	—	dB	—
C-14	K-Factor	KH	1	High-Gain mode $f = 300\text{ kHz to }6\text{ GHz}$	1.0	1.5	—	—	—
C-15	Switching Time	TSW	1	High-Gain mode → Low-Gain mode Low-Gain mode → High-Gain mode	—	3.2	10.0	μs	—

Note) *1 : Connector & pattern (evaluation PCB) loss (0.1 dB) included.

2009-09-04		
Established	Revised	

	<h1>Product Standards</h1>	<h2>AN26018A</h2>	
		Total Pages	Page
		17	11

■ Electrical Characteristics (Reference values for design) (continued) at $V_{CC} = 2.7\text{ V to }3.0\text{ V}$

Notes) • All characteristics are specified under $T_a = -20^\circ\text{C to }70^\circ\text{C}$

- The characteristics listed below are reference values derived from the design of the IC and are not guaranteed by inspection.

If a problem does occur related to these characteristics, we will respond in good faith to user concerns.

B No.	Parameter	Symbol	Test Circuit	Conditions	Reference values			Unit	Notes
					Min	Typ	Max		
DC electrical characteristics									
DCT-1	Supply current HG	I_{CCHT}	1	V_{CC} current at High-Gain mode No input signal	—	3.0	4.5	mA	—
DCT-2	Supply current LG	I_{CCLT}	1	V_{CC} current at Low-Gain mode No input signal	—	0.1	10	μA	—
DCT-3	Input voltage (High-Gain mode)	V_{IHT}	1	—	1.50	2.85	—	V	—
DCT-4	Input voltage (Low-Gain mode)	V_{ILT}	1	—	—	0.0	0.40	V	—
DCT-5	SW current (High)	I_{IHT}	1	Current at CNT pin $V_{IH} = V_{CC}$	—	11	50	μA	—

2009-09-04		
Established	Revised	

	<h1>Product Standards</h1>	<h2>AN26018A</h2>	
		Total Pages	Page
		17	12

■ **Electrical Characteristics (Reference values for design) (continued) at $V_{CC} = 2.7\text{ V}$ to 3.0 V**

- Notes) • All characteristics are specified under $T_a = -20^\circ\text{C}$ to 70°C , $f_{RX} = 470\text{ MHz}$, 620 MHz , 770 MHz , $PRX = -30\text{ dBm}$, CW
• The characteristics listed below are reference values derived from the design of the IC and are not guaranteed by inspection.
If a problem does occur related to these characteristics, we will respond in good faith to user concerns.

B No.	Parameter	Symbol	Test Circuit	Conditions	Reference values			Unit	Notes
					Min	Typ	Max		
LNA AC electrical characteristics									
E-1	Power Gain HG	GHT	1	High-Gain mode $f = f_{RX}$	11.5	14.5	17.5	dB	—
E-2	Power Gain LG	GLT	1	Low-Gain mode $f = f_{RX}$, $PRX = -20\text{ dBm}$	-2.7	-1.5	—	dB	—
E-3	Noise Figure HG	NFHT	1	High-Gain mode $f = f_{RX}$	—	1.5	2.3	dB	*1
E-4	Noise Figure LG	NFLT	1	Low-Gain mode $f = f_{RX}$	—	1.5	2.7	dB	—
E-5	IIP3 +10 MHz offset HG	IIP3H1T	1	High-Gain mode $f_1 = f_{RX} + 10\text{ MHz}$ $f_2 = f_{RX} + 20\text{ MHz}$ Input 2 signals (f_1, f_2)	-17.0	-8.0	—	dBm	—
E-6	IIP3 -10 MHz offset HG	IIP3H2T	1	High-Gain mode $f_1 = f_{RX} - 10\text{ MHz}$ $f_2 = f_{RX} - 20\text{ MHz}$ Input 2 signals (f_1, f_2)	-17.5	-8.5	—	dBm	—
E-7	Input P1dB HG	IP1dBHT	1	High-Gain mode $f = f_{RX}$	-13	-5	—	dBm	—
E-8	K-Factor	KHT	1	High-Gain mode $f = 300\text{ kHz}$ to 6 GHz	1.0	1.5	—	—	—
E-9	Switching Time	TSWT	1	High-Gain mode → Low-Gain mode Low-Gain mode → High-Gain mode	—	3.2	10.0	μs	—

Note) *1 : Connector & pattern (evaluation PCB) loss (0.1 dB) included.

2009-09-04		
Established	Revised	

	Product Standards	AN26018A	
		Total Pages	Page
		17	13

■ **Control Pins Mode Table**

Note) Control voltage range : See B No. DC-3 / B No. DC-4 at page 8

Pin No.	Descriptions	Voltage		Note
		Low	High	
3	High-Gain/Low-Gain Switching (Gain Control)	Low-Gain	High-Gain	—

■ **Truth Table**

Note) Control voltage range : See B No. DC-3 / B No. DC-4 at page 8

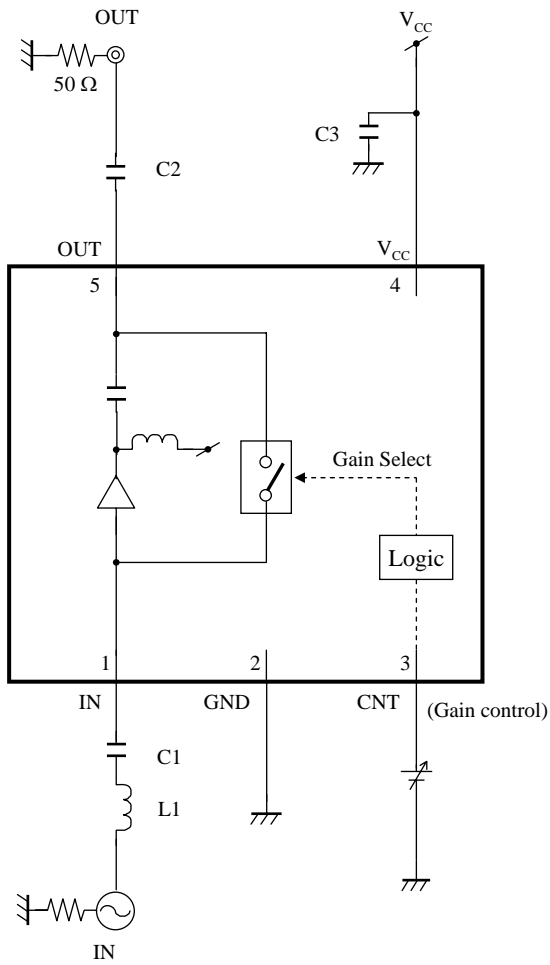
CNT	LNA	Mode
High	High-Gain	High-Gain
Low	Low-Gain	Low-Gain

2009-09-04		
Established	Revised	

	<h1>Product Standards</h1>	<h2>AN26018A</h2>	
		Total Pages	Page
		17	14

■ Test Circuit Diagram

1. Test Circuit 1



Note) External components : See page 15

2009-09-04		
Established	Revised	

	<h1>Product Standards</h1>	<h2>AN26018A</h2>	
		Total Pages	Page
		17	15

■ Test Circuit Diagram (continued)

2. External Components

Components	Chip Size [mm]	Value	Model	Manufacturer
C1	0603	1 000 pF	GRM033B11C102KD01	Murata
C2	0603	1 000 pF	GRM033B11C102KD01	Murata
C3	0603	0.1 μ F	GRM033B30J104KE18	Murata
L1	0603	6.8 nH	LQP03T6N8H04	Murata

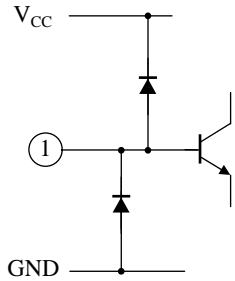
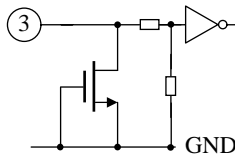
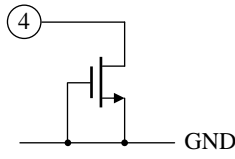
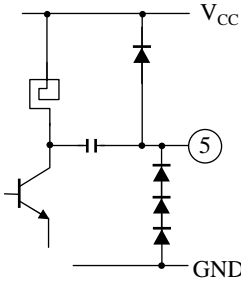
2009-09-04		
Established	Revised	

	<h1>Product Standards</h1>	<h2>AN26018A</h2>	
		Total Pages	Page
		17	16

■ Technical Data

- I/O block circuit diagrams and pin function descriptions

Note) The characteristics listed below are reference values derived from the design of the IC and are not guaranteed.

Pin No.	Waveform and voltage	Internal circuit	Impedance	Description
1	0.75 V		—	LNA input
2	0.0 V	—	—	GND
3	—		270 kΩ	High-Gain/Low-Gain SW input Less than 0.55 V : Low-Gain mode More than 1.40 V : High-Gain mode
4	2.85 V		—	Voltage supply
5	—		—	LNA output

2009-09-04		
Established	Revised	

	<h1>Product Standards</h1>	<h2>AN26018A</h2>	
		Total Pages	Page
		17	17

■ Usage Notes

• Special attention and precaution in using

1. This IC is intended to be used for general electronic equipment [cellular phones].
Consult our sales staff in advance for information on the following applications:
 - Special applications in which exceptional quality and reliability are required, or if the failure or malfunction of this IC may directly jeopardize life or harm the human body.
 - Any applications other than the standard applications intended.
 - (1) Space appliance (such as artificial satellite, and rocket)
 - (2) Traffic control equipment (such as for automobile, airplane, train, and ship)
 - (3) Medical equipment for life support
 - (4) Submarine transponder
 - (5) Control equipment for power plant
 - (6) Disaster prevention and security device
 - (7) Weapon
 - (8) Others : Applications of which reliability equivalent to (1) to (7) is required
2. Pay attention to the direction of LSI. When mounting it in the wrong direction onto the PCB (printed-circuit-board), it might smoke or ignite.
3. Pay attention in the PCB (printed-circuit-board) pattern layout in order to prevent damage due to short circuit between pins. In addition, refer to the Pin Description for the pin configuration.
4. Perform a visual inspection on the PCB before applying power, otherwise damage might happen due to problems such as a solder-bridge between the pins of the semiconductor device. Also, perform a full technical verification on the assembly quality, because the same damage possibly can happen due to conductive substances, such as solder ball, that adhere to the LSI during transportation.
5. Take notice in the use of this product that it might break or occasionally smoke when an abnormal state occurs such as output pin- V_{CC} short (Power supply fault), output pin-GND short (Ground fault), or output-to-output-pin short (load short) .
And, safety measures such as an installation of fuses are recommended because the extent of the above-mentioned damage and smoke emission will depend on the current capability of the power supply.
6. When designing your equipment, comply with the range of absolute maximum rating and the guaranteed operating conditions (operating power supply voltage and operating environment etc.). Especially, please be careful not to exceed the range of absolute maximum rating on the transient state, such as power-on, power-off and mode-switching. Otherwise, we will not be liable for any defect which may arise later in your equipment.
Even when the products are used within the guaranteed values, take into the consideration of incidence of break down and failure mode, possible to occur to semiconductor products. Measures on the systems such as redundant design, arresting the spread of fire or preventing glitch are recommended in order to prevent physical injury, fire, social damages, for example, by using the products.
7. When using the LSI for new models, verify the safety including the long-term reliability for each product.
8. When the application system is designed by using this LSI, be sure to confirm notes in this book.
Be sure to read the notes to descriptions and the usage notes in the book.

2009-09-04		
Established	Revised	