

# LU5

## Signal Tower



LED



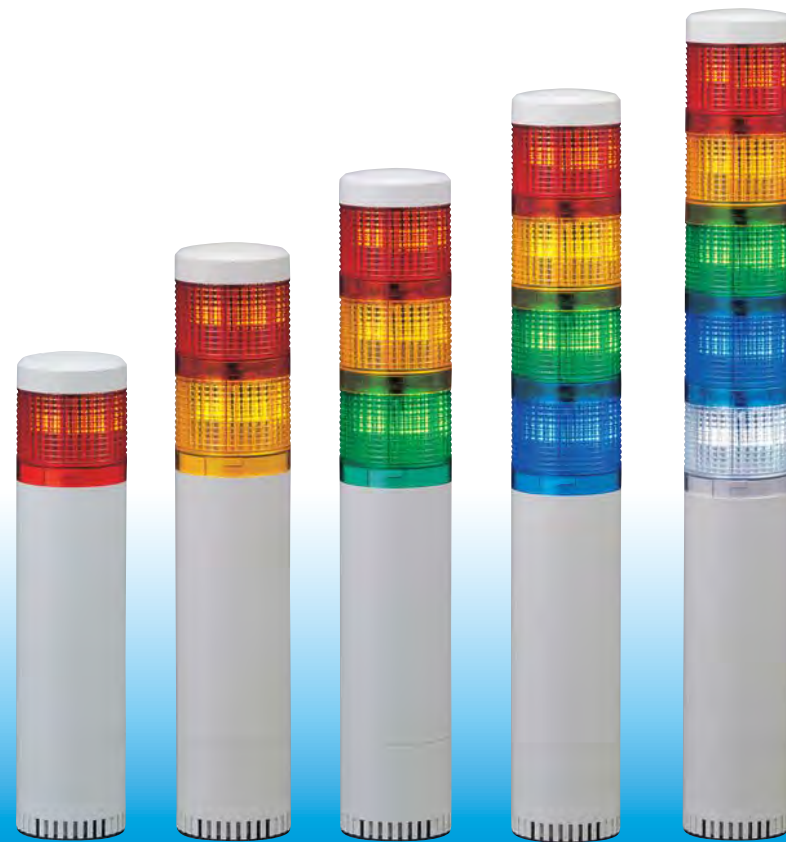
85dB at 1m  
(FB type)

Electronic Sound 2  
(FB type)

ø50

IP65

NPN/PNP  
Open collector



## Versatile modular Signal Tower featuring easy assembly and wiring designed for every need.

- PATLITE's Exclusive Hybrid Prism Cut Lens: For enhanced visibility from any direction and distance.
- Built-in Alarms (FB Type): 2 selectable sound patterns up to 85dB at 1m.
- Installation: Direct or pole\* mount.
- Color-coordinated Wiring: Terminal block color corresponds to the lens colors for quick wiring verification.
- Interchangeable LED Modules: No re-wiring even after installation.
- Lens: Superior impact and heat resistant polycarbonate resin for superior durability and light transmission.
- Available Colors: Red, Amber, Green, Blue, Clear/White.

### Available By Special Order

- RoHS Compliance.
- Silver Color Body.
- Modules of the same color can be modified to operate from different terminals.

\* Optional part sold separately.

### LED module



Module Color	Model	Rated voltage	Operating voltage	Current/Power	Operating temperature range	Mass
RED	LU5-E-R	24V DC	Rated voltage ± 10% (21.6~26.4V)	52mA/1.25W	-30°C~+60°C	44g ±10%
AMBER	LU5-E-Y					
GREEN	LU5-E-G					
BLUE	LU5-E-B					
CLEAR	LU5-E-C			42mA/1.0W		

### How to order

LED module		Base module	
<b>LU5-E-R</b>		<b>LU5-02FB</b>	
LED unit	Color	Rated Voltage	Type
	R: Red		Blank: Continuous light
	Y: Amber		FB: Continuous or, flashing light with audible alarm
	G: Green		
	B: Blue		
	C: Clear/White		
		02: 24V DC	

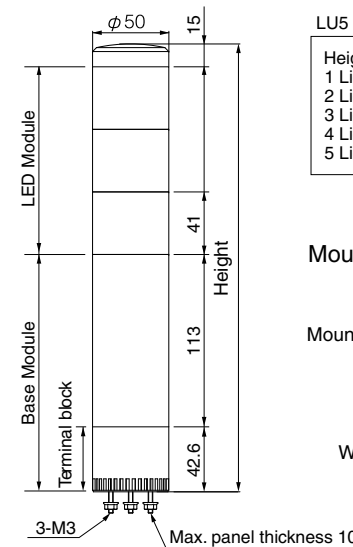
### Base module



Model	Options	Rated Voltage	Operating voltage	Operating temperature range	Mass	Open Collector
LU5-02	Continuous only	24V DC	Rated voltage ± 10% (21.6~26.4V)	-30°C~+60°C	182g ±10%	PNP/NPN
LU5-02FB	2 sounds / Flash				200g ±10%	

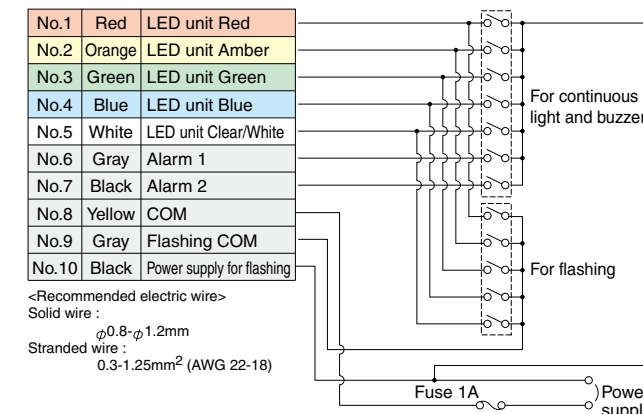
FB type: approx. 60±12 flashes per minute

### Dimensions



### Wiring Diagram

LU5-02FB  
24V DC



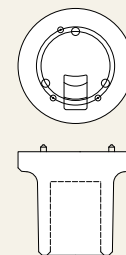
### Optional parts

#### Upper Bracket

SZ-60-U



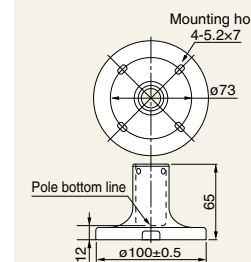
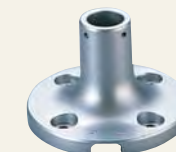
Required for pole mounting



#### Mounting Bracket

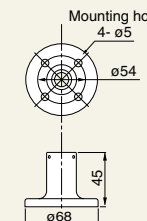
SZ-010

(For ø21.7mm pole)

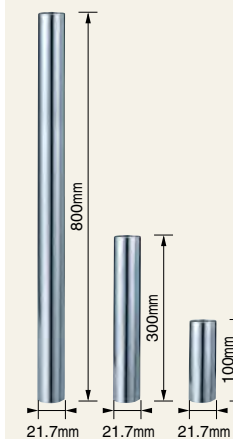


SZ-016A

(For ø21.7mm pole)

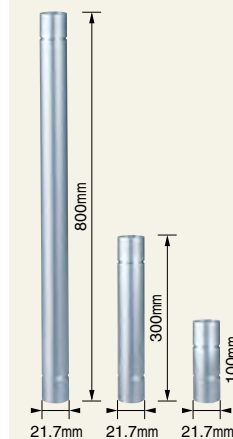


#### Steel Pole



800mm : **POLE-800S21**  
300mm : **POLE-300S21**  
100mm : **POLE-100S21**

#### Aluminum Pole

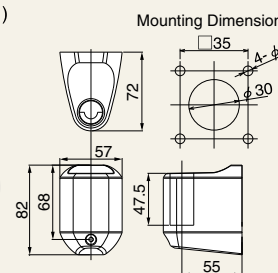


800mm : **POLE-800A21**  
300mm : **POLE-300A21**  
100mm : **POLE-100A21**

### Wall Mount Bracket

SZ-020

(For ø21.7mm pole)



Modules	
Model	Material
POLE-□□□S21	Steel
POLE-□□□A21	Aluminum
SZ-010	ADC12
SZ-016A	ADC12
SZ-70-B	ABS resin
SZ-020	ABS resin

※ ADC12...Aluminum alloy die-cast