

L 8 W/840

LUMILUX T5 Short | Tubular fluorescent lamps 16 mm, short, with G5 base



Areas of application

- Shops
- Supermarkets and department stores
- Public buildings

Product benefits

- Ideal for cost-effective creative illumination and decoration
- Very good luminous flux maintenance throughout the life of the lamp
- Slim and compact

Product features

- Good color rendering group: 1B (R_a : 80...89)
- Average lifetime: up to 10,000 h (with QUICKTRONIC ECG)



Product datasheet

Technical data

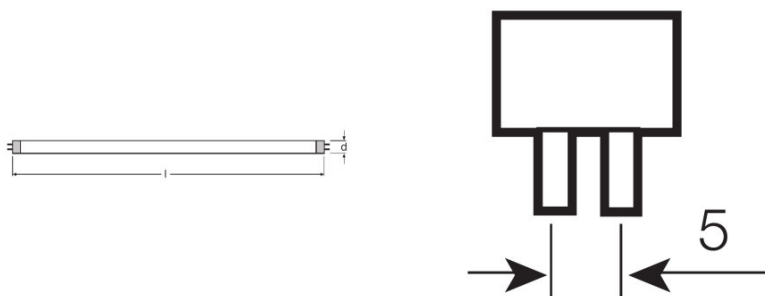
Electrical data

Nominal wattage	8.00 W
Rated lamp efficacy (HF data 25 °C)	Under clarification by authority and standardization body
Rated lamp efficacy (standard condition)	61 lm/W
Rated wattage	7.10 W

Photometrical data

Color rendering index Ra	≥80
Rated luminous flux	430 lm
Luminous flux at 25 °C	430 lm
Light color	840
Color temperature	4000 K
Nominal luminous flux	430 lm
Light color (designation)	LUMILUX Cool White
Rated LLMF at 2,000 h	0.90
Rated LLMF at 4,000 h	0.84
Rated LLMF at 6,000 h	0.79
Rated LLMF at 8,000 h	0.75

Dimensions & weight



Tube diameter	16 mm
Length	288.3 mm
Length with base excl. base pins/connection	288.00 mm
Diameter	16.0 mm
Maximum diameter	16.0 mm

Product datasheet

Temperatures & operating conditions

Rated ambient temp.w.max.luminous flux	35.0 °C
--	---------

Lifespan

Lifespan	10000 h ¹⁾
Rated lamp survival factor at 2,000 h	0.99
Rated lamp survival factor at 4,000 h	0.99
Rated lamp survival factor at 6,000 h	0.95
Rated lamp survival factor at 8,000 h	0.81
Operation mode LLMF/LSF	HF
Rated lamp life time	10000 h
Nominal lamp life time	10000 h

¹⁾ With CCG/LLCG

Additional product data

Base (standard designation)	G5
Mercury content	2.5 mg
Appropriate disposal acc. to WEEE	Yes

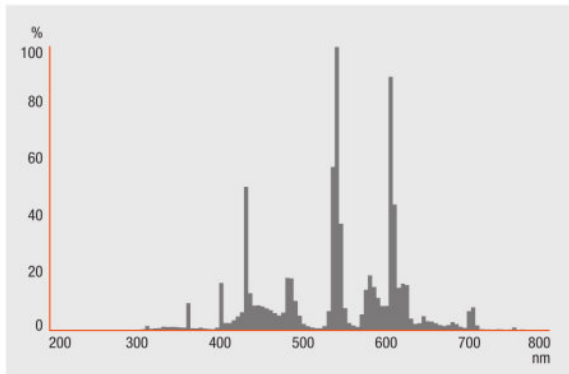
Capabilities

Suitable for indoor	Yes
---------------------	-----

Certificates & standards

Energy efficiency class	A
Energy consumption	8 kWh/1000h

Light Distribution



Spectral power distribution

System guarantee

OSRAM System+ Guarantee in combination with OSRAM ECGs

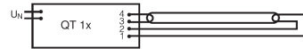
Safety advice

In case of lamp breakage: www.osram.com/brokenlamp

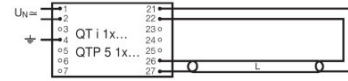
Product datasheet



Die Zuleitungen 3 und 4 sollen so kurz wie möglich sein



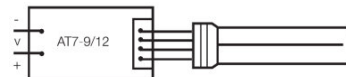
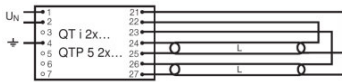
Die Zuleitungen 3 und 4 sollen so kurz wie möglich sein



Circuit diagram

Circuit diagram

Circuit diagram



Circuit diagram

Circuit diagram

Logistical Data

Product code	Product description	Packaging unit (Pieces/Unit)	Dimensions (length x width x height)	Volume	Gross weight
4050300241623	L 8 W/840	Shipping carton box 25	320 mm x 119 mm x 105 mm	4.00 dm ³	973.10 g

The mentioned product code describes the smallest quantity unit which can be ordered. One shipping unit can contain one or more single products. When placing an order, for the quantity please enter single or multiples of a shipping unit.

References / Links

For more information on QUICKTRONIC electronic control gear go to

▶ www.osram.com/QUICKTRONIC

Disclaimer

Product datasheet

Subject to change without notice. Errors and omission excepted. Always make sure to use the most recent release.