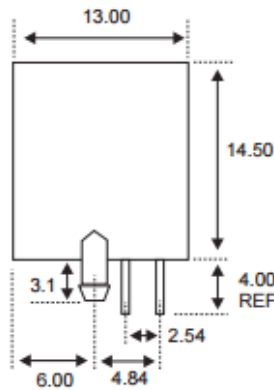
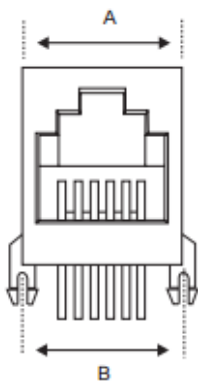


# Datasheet

## Right Angle PCB Mount

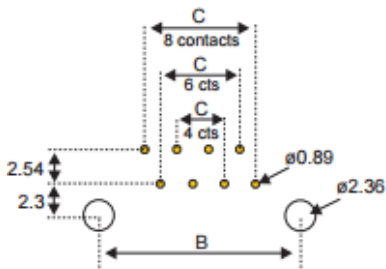
RS Stock number [331-6421](#)

Dimensions: (mm)



| No of Positions | Dimensions |       |      |
|-----------------|------------|-------|------|
|                 | A          | B     | C    |
| 4               | 10.00      | 10.00 | 3.06 |
| 6               | 12.20      | 12.00 | 5.10 |
| 8               | 15.00      | 15.00 | 7.14 |

PCB Layout / top view



## Specifications

**Housing:** Standard Material Glass Filled Polyester UL94V-0  
Standard Colour Medium Gray

**Contact:** 0.46mm diameter Alloy C5210, Gold Plating over Nickel

**Gold Plating:** Selective Gold Plating