



Product Compliance

For compliance documentation, visit the product page on TE.com>

EU RoHS Directive 2011/65/EU	Compliant
EU ELV Directive 2000/53/EC	Compliant
China RoHS 2 Directive MIIT Order No 32, 2016	No Restricted Materials Above Threshold
EU REACH Regulation (EC) No. 1907/2006	Current ECHA Candidate List: JAN 2025 (247) Candidate List Declared Against: JAN 2025 (247) Does not contain REACH SVHC
Halogen Content	Not Low Halogen - contains Br or Cl > 900 ppm.
Solder Process Capability	Wave solder capable to 265°C

Product Compliance Disclaimer

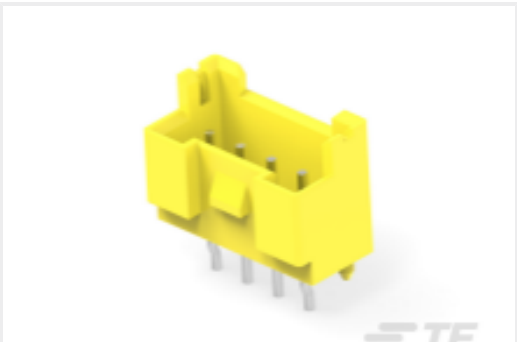
This information is provided based on reasonable inquiry of our suppliers and represents our current actual knowledge based on the information they provided. This information is subject to change. The part numbers that TE has identified as EU RoHS compliant have a maximum concentration of 0.1% by weight in homogenous materials for lead, hexavalent chromium, mercury, PBB, PBDE, DBP, BBP, DEHP, DIBP, and 0.01% for cadmium, or qualify for an exemption to these limits as defined in the Annexes of Directive 2011/65/EU (RoHS2). Finished electrical and electronic equipment products will be CE marked as required by Directive 2011/65/EU. Components may not be CE marked. Additionally, the part numbers that TE has identified as EU ELV compliant have a maximum concentration of 0.1% by weight in homogenous materials for lead, hexavalent chromium, and mercury, and 0.01% for cadmium, or qualify for an exemption to these limits as defined in the Annexes of Directive 2000/53/EC (ELV). Regarding the REACH Regulation, the information TE provides on SVHC in articles for this part number is based on the latest European Chemicals Agency (ECHA) ‘Guidance on requirements for substances in articles’ posted at this URL: <https://echa.europa.eu/guidance-documents/guidance-on-reach>

Compatible Parts

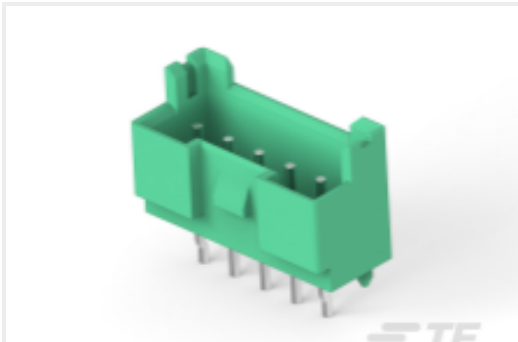


TE Part # 1-1969567-4  
HOUSING, PLUG, GWT, DUAL ROW,  
EP2.5

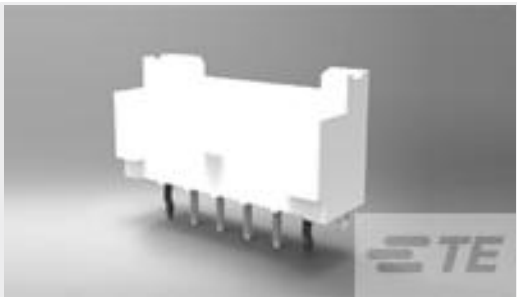
Customers Also Bought



TE Part #6-2338245-4  
EP2.5 HDR 4P VERT BOSS,yellow,UL



TE Part #8-2338245-5  
EP2.5 HDR 5P VERT BOSS,GREEN,UL



TE Part #1-1744418-0  
10 POS EP 2.5 HDR, GLOW WIRE



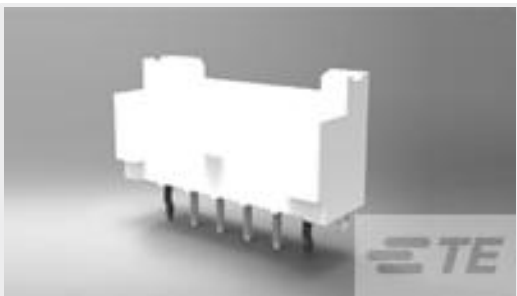
TE Part #4-1123724-2  
3.96EP HDR ASSY 2(3)P RED



TE Part #1-640456-1  
11P MTA100 HDR ASSY F/L SQ STR



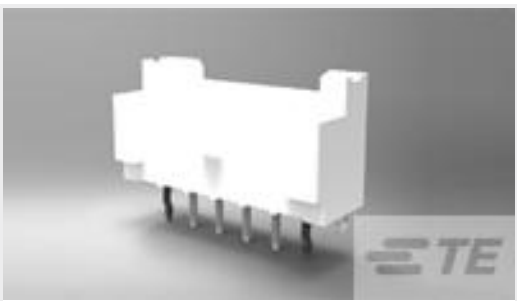
TE Part #2-1415899-5  
RZH3-1C4-D012



TE Part #1744418-3  
3 POS EP 2.5 HDR, GLOW WIRE



TE Part #1-1123723-7  
3.96 EP HDR ASSY 7P(NATURAL)



TE Part #1744418-8  
8 POS EP 2.5 HDR, GLOW WIRE



TE Part #1-1969543-0  
ASSY, HDR, VERT, 10P, DUAL ROW,  
EP2.5

Documents

Product Drawings

ASSY,HDR,RIGHT ANGLE,GWT,DUAL ROW, EP2.5

English

Datasheets & Catalog Pages

7-1773461-6\_EP2.5\_Connector\_Series

English

Product Specifications

Application Specification



English

---

**Instruction Sheets**  
**Instruction Sheet (U.S.)**

English

---

**Agency Approvals**  
**VDE Certificate**

English