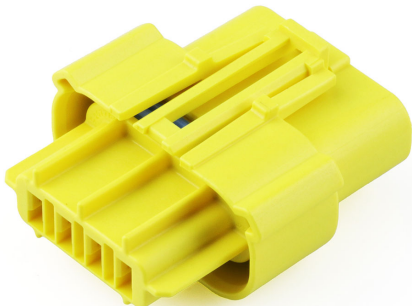




**Part Number :** [2077820412](#)  
**Product Description :** 2.54mm Pitch SL Header, Single Row, Vertical, LCP, Shrouded, Through Hole, 0.75µm Selective Gold (Au) Plating, 17 Circuits  
**Series Number :** [171971](#)  
**Status :** Active  
**Product Category :** [PCB Headers and Receptacles](#)



## Documents & Resources


**Drawings**  
[1719710217\\_sd.pdf](#)  
[1719710000-PK-000.pdf](#)

**3D Models and Design Files**  
[1719710217\\_stp.zip](#)  
[symbolFootprintLinkPDP](#)

**Specifications**  
[1719710000-PS-000.pdf](#)  
[PS-70400-001.pdf](#)

## Product Environment Compliance

### Compliance

GADSL/IMDS	Not Relevant
China RoHS	
EU ELV	Not Relevant
Low-Halogen Status	Low-Halogen per IEC 61249-2-21
REACH SVHC	Not Contained per D(2024)6225-DC (07 Nov 2024)
EU RoHS	Compliant per EU 2015/863

Multiple Part Product Compliance Statements  
- Eu RoHS  
- REACH SVHC  
- Low-Halogen

## Multiple Part Industry Compliance Documents

- IPC 1752A Class C
- IPC 1752A Class D
- Molex Product Compliance Declaration
- IEC-62474
- chemSHERPA (xml)

## EU RoHS Certificate of Compliance

---

### Part Details

#### General

Status	Active
Category	PCB Headers and Receptacles
Series	171971
Description	2.54mm Pitch SL Header, Single Row, Vertical, LCP, Shrouded, Through Hole, 0.75µm Selective Gold (Au) Plating, 17 Circuits
Application	Signal, Wire-to-Board
Component Type	PCB Header
Product Name	SL
UPC	889056784900

#### Electrical

Current - Maximum per Contact	3.0A
Voltage - Maximum	250V

#### Physical

Breakaway	No
Circuits (Loaded)	17
Circuits (maximum)	17
Color - Resin	Black
First Mate / Last Break	No
Glow-Wire Capable	No
Guide to Mating Part	No
Keying to Mating Part	None
Lock to Mating Part	Yes
Material - Metal	Brass

Material - Plating Mating	Gold
Material - Plating Termination	Matte Tin
Material - Resin	Liquid Crystal Polymer
Net Weight	3.026/g
Number of Rows	1
Orientation	Vertical
Packaging Type	Tube
PC Tail Length	3.30mm
PCB Locator	No
PCB Retention	None
PCB Thickness - Recommended	1.57mm
Pitch - Mating Interface	2.54mm
Pitch - Termination Interface	2.54mm
Plating min - Mating	0.750µm
Plating min - Termination	2.000µm
Polarized to Mating Part	Yes
Polarized to PCB	Yes
Shrouded	Fully
Temperature Range - Operating	-40° to +105°C
Termination Interface Style	Through Hole

---

## Mates With / Use With

### Mates with Part(s)

Description	Part Number
SL Single Row Female Insulation Displacement Connector Assemblies	<u>70400</u>
SL Single Row Crimp Housings and CPA Retainers	<u>70066</u>
SL Single Row Female Receptacles	<u>70430</u>