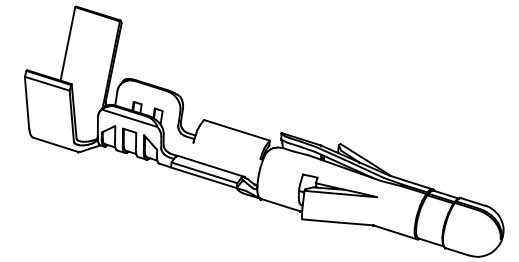
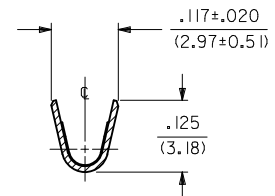
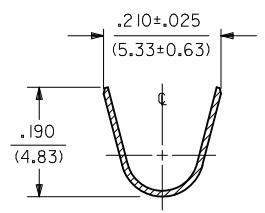
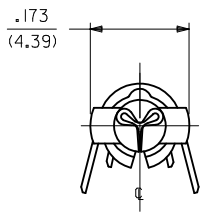


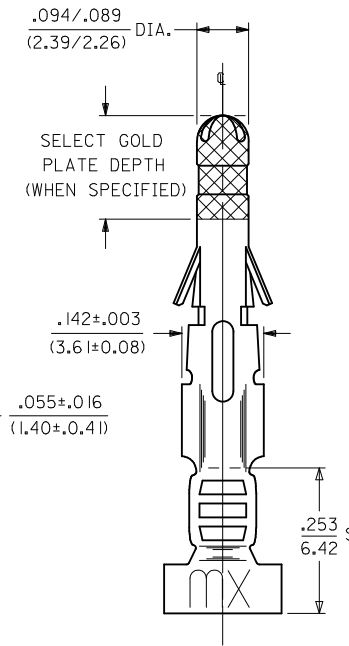
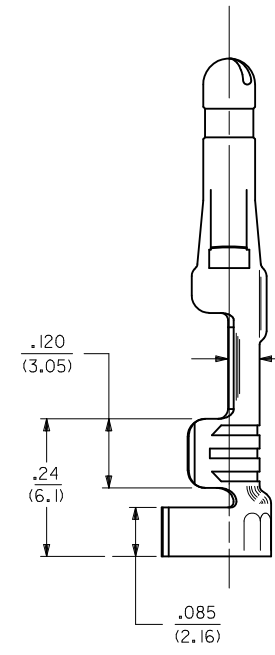
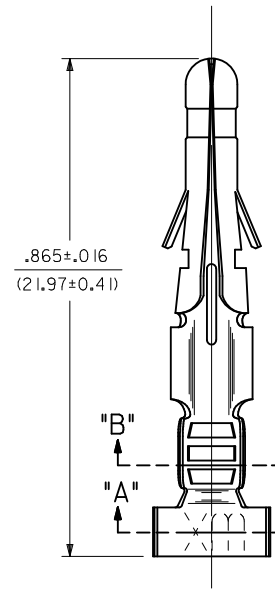
PART NO.	ENG. NO.	INTERLEAF PAPER OPTION
02-09-2103	1190-(P901)L	
02-09-2101	1190-(P901)	
02-09-6110	1190-(591)L	
02-09-6101	1190-(591)	
02-09-6106	1190-(550)L	
02-09-6100	1190-(550)	
02-09-5101	1190-(P901)-I	YES



SECT. "B-B"



SECT. "A-A"



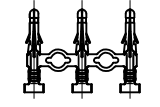
- NOTES:
- MATERIAL:  
CARTRIDGE BRASS
  - FINISH CODES:  
901 HOT TIN DIP .000020/(0.00051) MIN.  
591 SELECT GOLD PLATE .000050/(0.00127) MIN. IN CONTACT AREA,  
OVER .000050/(0.00127) MIN. NICKEL OVERALL  
WITH .000010/(0.00025) MAX. GOLD FLASH OVERALL.  
550 SELECT GOLD PLATE .000015/(0.00038) MIN. IN CONTACT AREA,  
OVER .000030/(0.00076) MIN. NICKEL OVERALL  
WITH .000010/(0.00025) MAX. GOLD FLASH OVERALL.
  - PRODUCT SPECIFICATION: PS-43660-9999
  - PACKAGING SPECIFICATION: PK-1190-001
  - INSERTION FORCE: 5.0 LBS. MAX. WHEN TERMINAL IS INSERTED INTO .093 SERIES HOUSING.
  - RETENTION: 20 LBS. MIN. FROM HOUSING.
  - DIMENSION FROM THE END OF THE TERMINAL TO THE END OF THE BRUSH ON THE WIRE CRIMPED INTO THE TERMINAL.
  - TERMINAL FOR USE WITH .093/(2.36) SERIES HOUSINGS AND WILL ACCEPT 14 THRU 20 AWG WIRE.

LEGEND

1190-(\*\*\*\*)\*--\*

↑ INTERLEAF PAPER OPTION  
 ↑ FORM  
 ↑ BLANK=CHAIN  
 ↑ L=LOOSE  
 ↑ FINISH CODE  
 ↑ P=PREPLATE  
 ↑ BLANK=POSTPLATE

BLANK: INTERLEAF PAPER ON FIRST FEW WRAPS ONLY.  
 I: INTERLEAF PAPER THROUGH OUT REEL.



CHAIN FORM FULL SCALE

ADD P/N 02-09-5101 EC NO: UCP2012-2714 DRWN: AELHAG CHKD: JBELL APPR: FSMITH	2012/02/20 2012/02/22 2012/04/25	DESCRIPTION BSS	QUALITY SYMBOLS	GENERAL TOLERANCES (UNLESS SPECIFIED)	DIMENSION STYLE	SCALE	DESIGN UNITS	THIRD ANGLE PROJECTION
			$\nabla=0$ $\nabla=0$	mm    INCH 4 PLACES ± --- ± --- 3 PLACES ± --- ± .010 2 PLACES ± 0.25 ± .014 1 PLACE ± 0.36 ± --- ANGULAR ± 1/2°	IN/MM DRAWN BY DATE AELHAG 2010/06/23 CHECKED BY DATE JBELL 2010/06/23 APPROVED BY DATE FSMITH 2010/06/29	6:1	INCH	
			DRAFT WHERE APPLICABLE MUST REMAIN WITHIN DIMENSIONS	SEE CHART MATERIAL NO. SD-1190-* DOCUMENT NO.	TITLE CRIMP TERMINAL, MALE .093/(2.36) DIA. FOR 14 THRU 20 AWG. WIRE MOLEX INCORPORATED	SHEET NO. 1 OF 1		
			THIS DRAWING CONTAINS INFORMATION THAT IS PROPRIETARY TO MOLEX INCORPORATED AND SHOULD NOT BE USED WITHOUT WRITTEN PERMISSION					