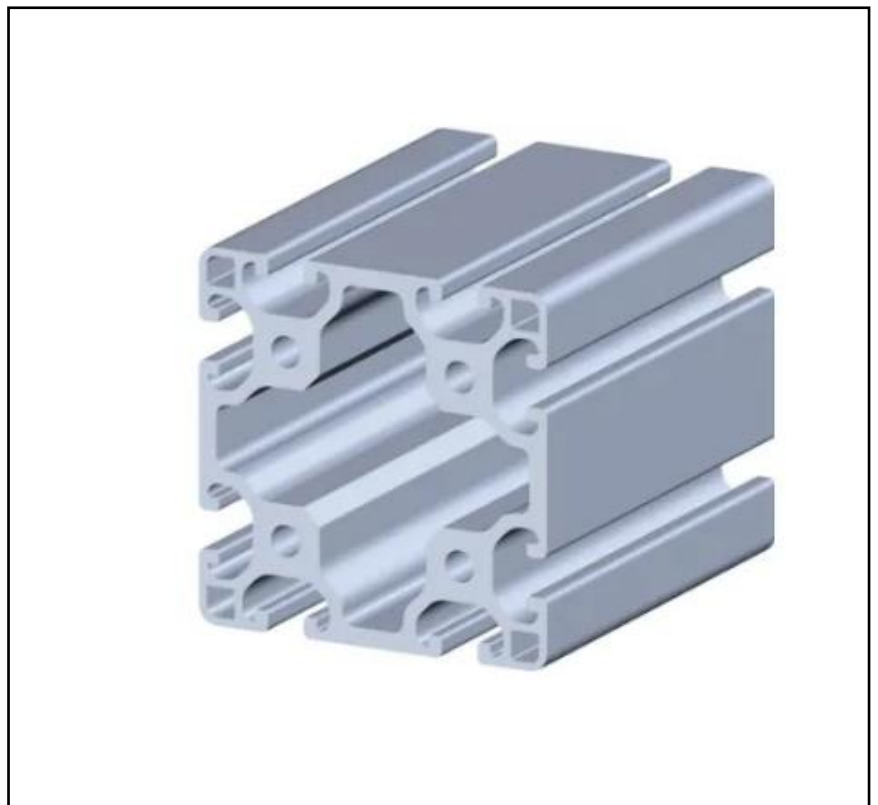


FEATURES

- Light-weight aluminium alloy
- Suitable for cut to length applications
- Structural element type: Strut profile
- Compatible with support and connector accessories

RS PRO Strut, 80 x 80 mm, 8mm Groove, 3000mm Length

RS Stock No.: 850-8509



RS Professionally Approved Products bring to you professional quality parts across all product categories. Our product range has been tested by engineers and provides a comparable quality to the leading brands without paying a premium price.

Product Description

RS Pro Structural System 80mm x 80mm Profile 8 element, available in 2m ([850-8505](#)) and 3m ([850-8509](#)) lengths, compatible with Item Profile 8 range. RS PRO Structural System Profiles, compatible with Item Profile 5, Profile 6 and Profile 8, are suitable for general workplace furniture system construction, offering strong, light-weight, easily interchangeable elements in a variety of profile types

This range includes the following Aluminium Alloy Struts:

[850-8505](#) - 8mm Groove, 2000mm Length, Series Profile 8

[850-8509](#) - 8mm Groove, 3000mm Length, Series Profile 8

General Specifications

Structural Element Type	Strut Profile
Number of Grooves	8
Material	Aluminium
Applications	Construction, Industrial equipment, Automotive manufacturing, Plumbing

Mechanical Specifications

Strut Profile	80mm x 80mm
Length	3000mm
Groove Size	8mm
Mass (G)	5.33kg/m
Moment of Inertia (I₂)	134.90cm ⁴
Section Modulus (W_x)	33.72 cm ³

Compatible Accessories for Groove

Stock No.	Items
<u>767-5601, 767-5604, 767-5608</u>	End Caps
<u>767-5695, 767-5718, 767-5737, 767-5715, 767-5761, 767-5692, 767-5721, 767-5709, 767-5702</u>	Connector Bracket and Joint
<u>767-5727</u>	Floor Bracket
<u>767-5645, 767-5642, 767-5654, 767-5667, 767-5648, 767-5651, 767-5658, 767-5660, 767-5664, 767-5673, 767-5636</u>	T-Slot Nut
<u>767-5822, 767-5686, 767-5689</u>	Screws
<u>767-5711</u>	Cube Connector
<u>767-5730, 767-5670, 767-5676</u>	Universal Connector
<u>767-5686, 767-5682</u>	T-Matic Connector
<u>767-5689</u>	Screw connector
<u>767-5695, 767-5698</u>	Connection Angle
<u>767-5743</u>	Roller

