

QMS1763 Iss O – BeagleBone Blue - ASSEMBLY INSTRUCTIONS

List of Parts;

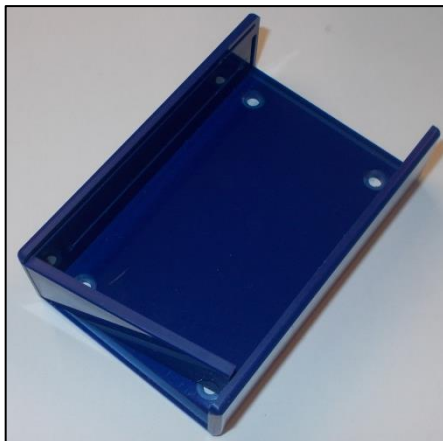
- BeagleBone Blue PCB
- Blue Base
- Clear Lid
- Blank End Panel
- Machined End Panel

List of Finished Parts;

- BeagleBone Blue Enclosure



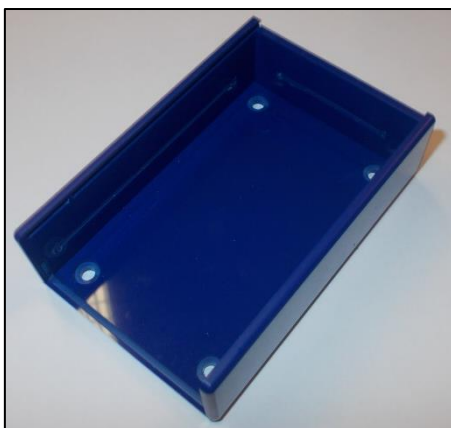
1. Insert the blank end panel first.



Clip one side into the alignment groove



Then push from the inside to clip into place



Author	Lewis Letchford	First Issued 30/06/2017	Status	Released
Date Created	30/06/2017	Date Revised	Issue	O
Owner	Technical Dept.	Revised By	ECN Number	

2. Same again with the remaining end panel.



Clip one side into the alignment groove



Then push from the inside to clip into place



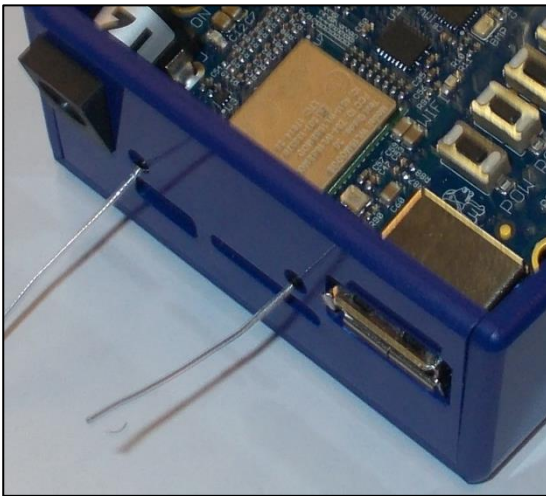
3. Insert the PCB as shown below.



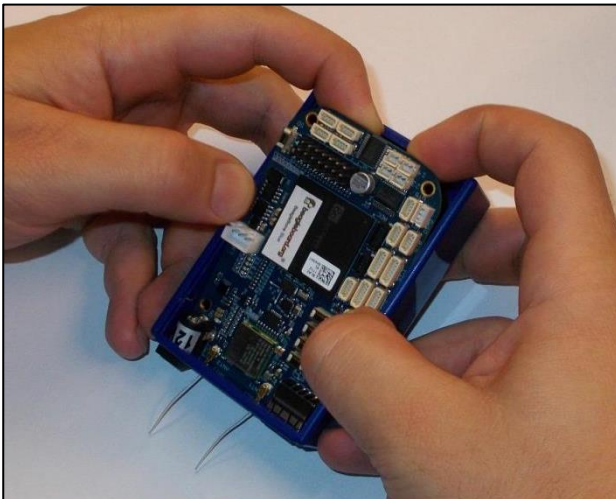
First insert the antenna's through the 2 small holes on the end panel so that the board is at an angle



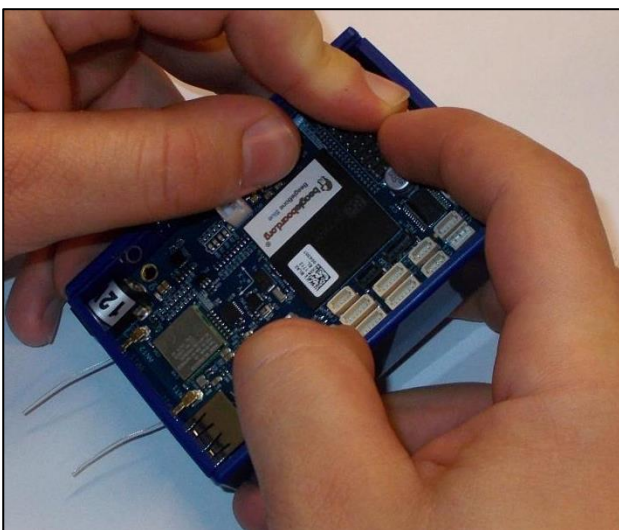
Author	Lewis Letchford	First Issued 30/06/2017	Status	Released
Date Created	30/06/2017	Date Revised	Issue	0
Owner	Technical Dept.	Revised By	ECN Number	



Next push the board until the 12V power and USB components slot through the cut outs.

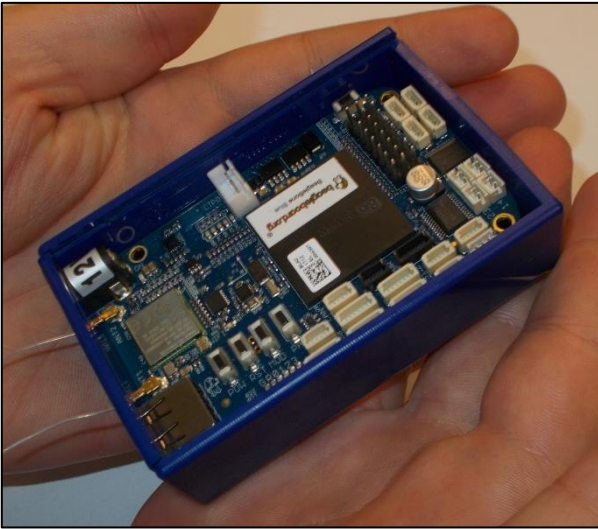


Apply a small amount of pressure by pulling the sides of the enclosure apart, just slightly.



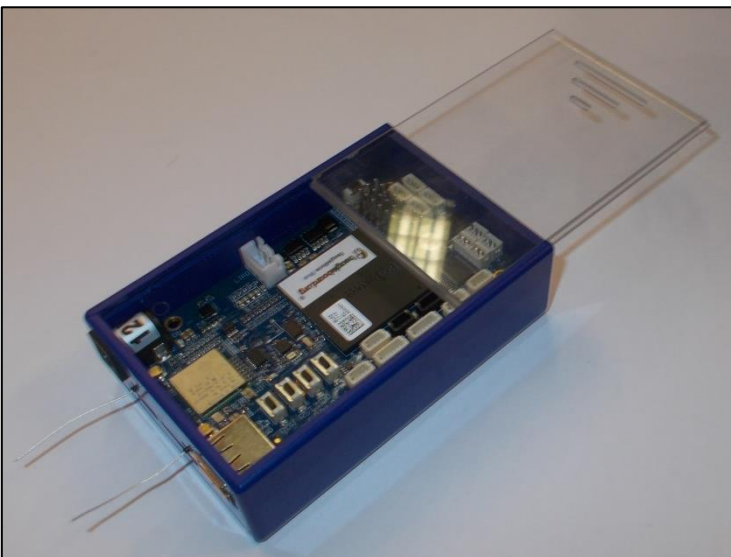
Then push gently down on the PCB until it clips into the groves half way up the enclosure.

Author	Lewis Letchford	First Issued 30/06/2017	Status	Released
Date Created	30/06/2017	Date Revised	Issue	0
Owner	Technical Dept.	Revised By	ECN Number	



Ensure that the PCB and end panels all sit straight and are inserted to their location grooves correctly.

4. Lastly slot the clear cover into place until it clicks secure.



Author	Lewis Letchford	First Issued 30/06/2017	Status	Released
Date Created	30/06/2017	Date Revised	Issue	0
Owner	Technical Dept.	Revised By	ECN Number	