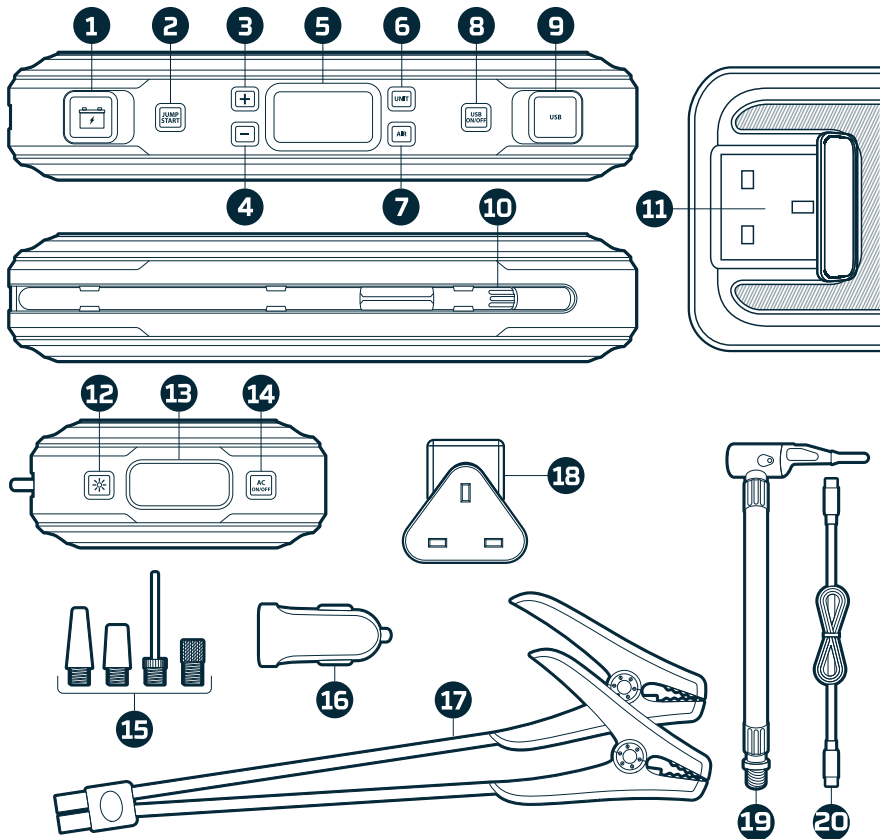




NEBO

NEBO ULTIMATE



- 1 | Jump Start Output

2 | Jump Start ON/OFF Button

3 | Air Pressure Up Button

4 | Air Pressure Down Button

5 | Digital Display

6 | Unit Button (PSI, BAR, KPA)

7 | Compressor ON/OFF Button

8 | USB ON/OFF Button

9 | USB-A Output & USB-C Bi-Directional Port

10 | Integrated Air Hose
- 11 | AC 3-Pin Plug (UK) Port

12 | Floodlight ON/OFF Button

13 | LED Floodlight

14 | AC Power ON/OFF Button

15 | Interchangeable Nozzle Kit

16 | 12V Car Charge Adapter

17 | Jumper Cable Clamps

18 | UK Charging Adapter

19 | 24in Air Extension Hose

20 | USB-C to USB-C Cable

NEBO

ULTIMATE (UK)

AC MAINS OUTLET, JUMP STARTER,
POWERBANK, FLOODLIGHT
& AIR COMPRESSOR

SPECIFICATIONS

Battery Cells	15,000 mAh
Battery Capacity	55,500mWh
USB-C Input/Output	PD/QC3.0 20W
USB-A Output	5V 2.4A
AC Output	230VAC 50HZ 75W
Jump Start Output	12VDC/600A for 3s, 1500A Peak
Air Compressor	130 psi max
Dimensions	275 x 140 x 55mm
Weight	1.48kg
Operating Temperature	-32° F -113°F (0 - 45°C)
Discharge Temperature	-14°F -104°F (-10 - 40°C)



SAFETY PRECAUTIONS/
MOVING AND STORAGE INSTRUCTIONS

Read all instructions before using the product.
When used correctly, lithium-ion rechargeable batteries provide a safe and dependable source of portable power. However, if they are misused or abused, this may result in leakage, burns, fire or explosion, causing personal injury or damage to other devices.
Misusing or incorrectly connecting your NEBO Ultimate Jump starter may cause electric shock to users and damage equipment.
Keep your NEBO Ultimate dry and away from moisture and corrosive materials. The NEBO Ultimate should not be used near water or wet areas such as bathtubs, showers, bathrooms, sinks, swimming pools or basements.
Do not expose your NEBO Ultimate to moisture, water, rain, or snow.
Keep your NEBO Ultimate away from heat sources, including open flames, radiators, stoves, ovens, and any other devices that produce heat.
The lithium-ion rechargeable battery used in this charging device may present a risk of fire or chemical burn if mistreated. Do not expose to fire or excessive temperature. Do not expose to heat above 212°F (100°C) or incinerate.
In the unlikely event of leakage or explosion use sand or a chemical fire extinguisher.
Your NEBO Ultimate may become warm under extended high power operation. do not cover, wrap, or otherwise restrict the NEBO Ultimate during operation.
Do not disassemble your NEBO Ultimate. There are no user-serviceable parts inside. Incorrect reassembly may result in shock or fire hazard.
Do not drop or subject to strong impacts. Do not operate your NEBO Ultimate if it has received a sharp blow, or has otherwise been damaged in any way.
Do not puncture, crush or subject to mechanical shock.
The NEBO Ultimate, along with its accessories, are not toys and should be kept away from children.
Do not clean your NEBO Ultimate with harsh chemicals, soaps or detergents. Just wipe the case with a soft cloth.
Make sure the NEBO Ultimate's charging ports do not become contaminated with lint or other debris. use a canned-air type of product periodically to ensure that the port openings are clear.
Batteries should be recycled or disposed of as per state and local guidelines.

NEBO

ULTIMATE (UK)

AC MAINS OUTLET, JUMP STARTER,
POWERBANK, FLOODLIGHT
& AIR COMPRESSOR

QUICK START QUIDE

For more information, detailed video instructions,
and warranty registration, simply scan the
QR code or visit **NEBOpower.com**.



+ (FR) (DE) (ES) (IT) (PL) +

**IMPORTANT: Fully charge your NEBO Ultimate
before using it for the first time.**

CHARGING YOUR NEBO
ULTIMATE

CHARGING IN YOUR VEHICLE:

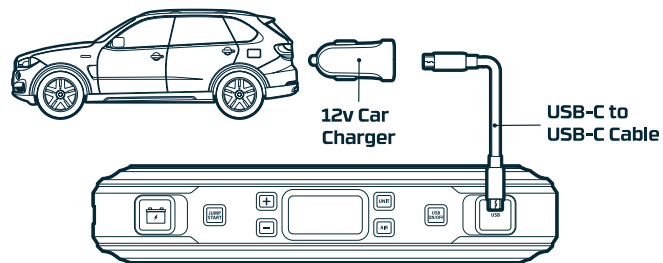
Connect the USB-C Cable end to the 12V Car Charger (included), and plug the USB-C end into the USB-C BiDirectional Port, located on the back of your Ultimate.

Plug the 12V Car Charger into the vehicles DC output (cigarette lighter).

The USB-C BiDirectional Port, port will begin to charge automatically when a device is detected.

When fully charged, the LCD screen will indicate 100% (This could take up to 4 hours).

Disconnect cable and power off your Ultimate.



CHARGING AT HOME:

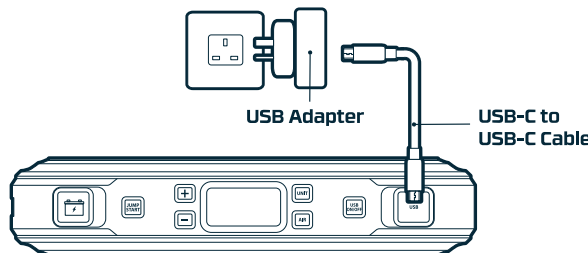
Connect the USB-C Cable end to the USB Adapter that came with your device (not included), and plug the USB-C end into the USB-C BiDirectional Port, located on the back of your Ultimate.

Plug the USB Adapter into a standard wall outlet.

The USB-C BiDirectional Port, port will begin to charge automatically when a device is detected.

When fully charged, the LCD screen will indicate 100% (This could take up to 4 hours).

Disconnect cable and power off your Ultimate.



JUMP STARTING YOUR VEHICLE

Plug the jumper cables into the jump-start output.

Attach the jumper-cable clamps to the vehicle battery.

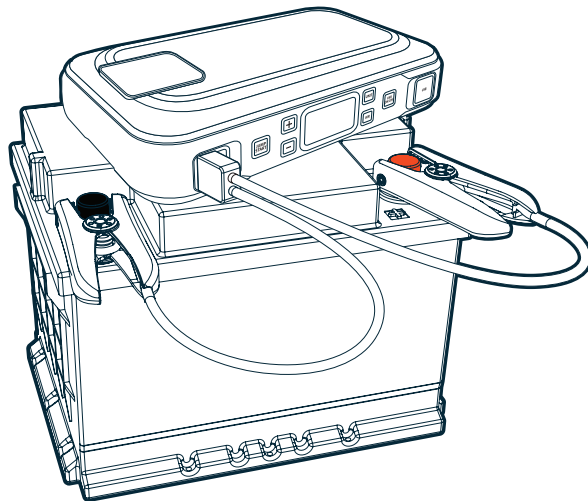
- Red clamp on positive terminal(+)

- Black clamp on negative terminal(-)

Press the "Jump Start" button and wait for a solid green light.

Start your vehicle.

NOTE: Do not touch red (positive) and black (negative) clamps together. Allow 15 seconds between each jump-start attempt. If your vehicle does not start after three attempts, consult a certified mechanic.



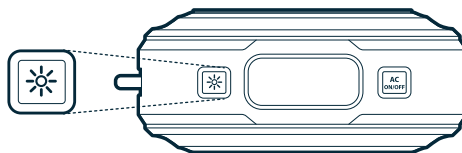
USING THE FLOODLIGHT

Floodlight ON/OFF Button once = ON White Floodlight

Floodlight ON/OFF Button twice = ON Red Floodlight

Floodlight ON/OFF Button three times = ON Emergency Red S.O.S.

Floodlight ON/OFF Button four times = OFF



NOTE: Do not look directly into the LED floodlight.

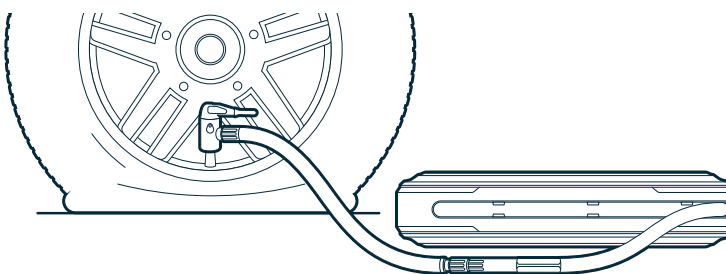
USING THE AIR COMPRESSOR

Connect the air hose to the tyre or inflatable - using the appropriate nozzle.

Press the (+) or (-) button to set the desired pressure. The measuring units can be changed by pressing the UNIT button.

Press the Air Compressor ON/OFF button. The air compressor will shut off automatically once the pressure has been reached.

NOTE: The air compressor can be started or stopped by pressing the air compressor ON/OFF button. Always follow the manufacturer's recommended pressure.



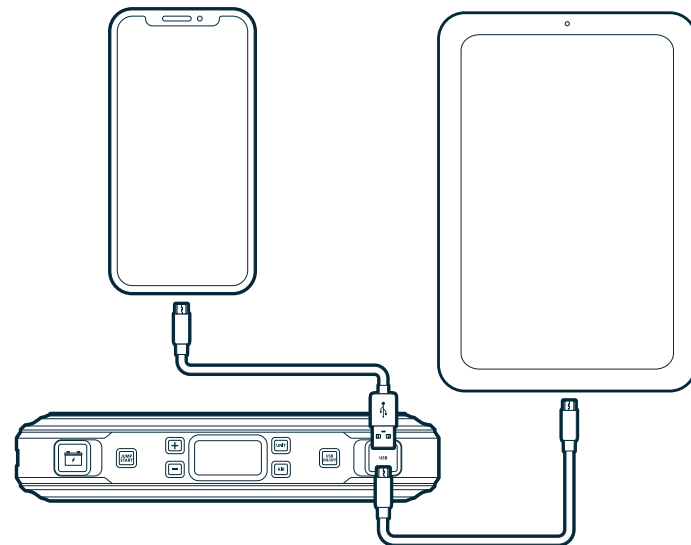
CHARGING YOUR ELECTRONIC DEVICES

Connect the appropriate cable to your device.

Plug the cable into the appropriate USB Output Port.

Press the USB ON/OFF button to begin charging your device.

Disconnect cable and power off your NEBO Ultimate.



NOTE: The NEBO Ultimate USB charging feature will automatically power off after 30 minutes of inactivity.

USING THE AC PORT

Connect the AC power plug from your device into the AC port, as shown below.

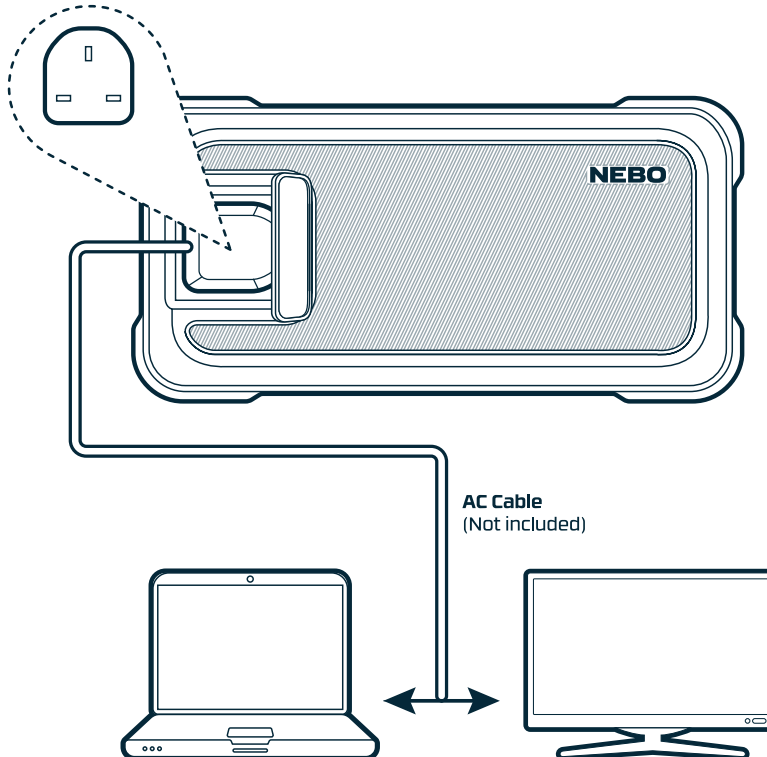
Press the AC ON/OFF Power Button to begin charging.

When charged, disconnect cable and power off your NEBO Ultimate.

NOTE: Any electronic device can be powered by the AC output port as long as it is rated at 75 watts or less. BE SURE TO CHECK THAT YOUR LAPTOP OR OTHER ELECTRONIC DEVICE IS RATED AT 75 WATTS OR LESS.

NOTE: Make sure the AC power plug is fully plugged into the AC port before pressing the AC Power ON/OFF Button.

NOTE: A flashing green light indicates safety checks are in progress. If you see a flashing red light, the device you connected is rated for greater than 75 watts and cannot be powered using the NEBO ULTIMATE charger.



NEBO	FILE NAME	NEB-PBK-0005-G ULTIMATE UK_QSG	
	SIZE	889mm x 196mm	
	SAN	5060945230882	
	DATE	15/06/2023	
		COLOR	<div><div>Red 12V</div><div>Dark Blue 200</div><div>Red Dual 12V/200</div></div>