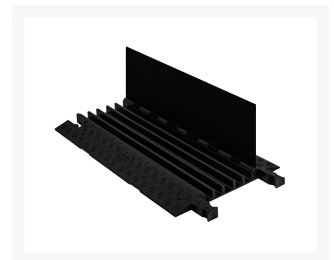
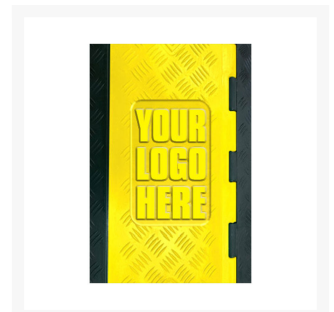
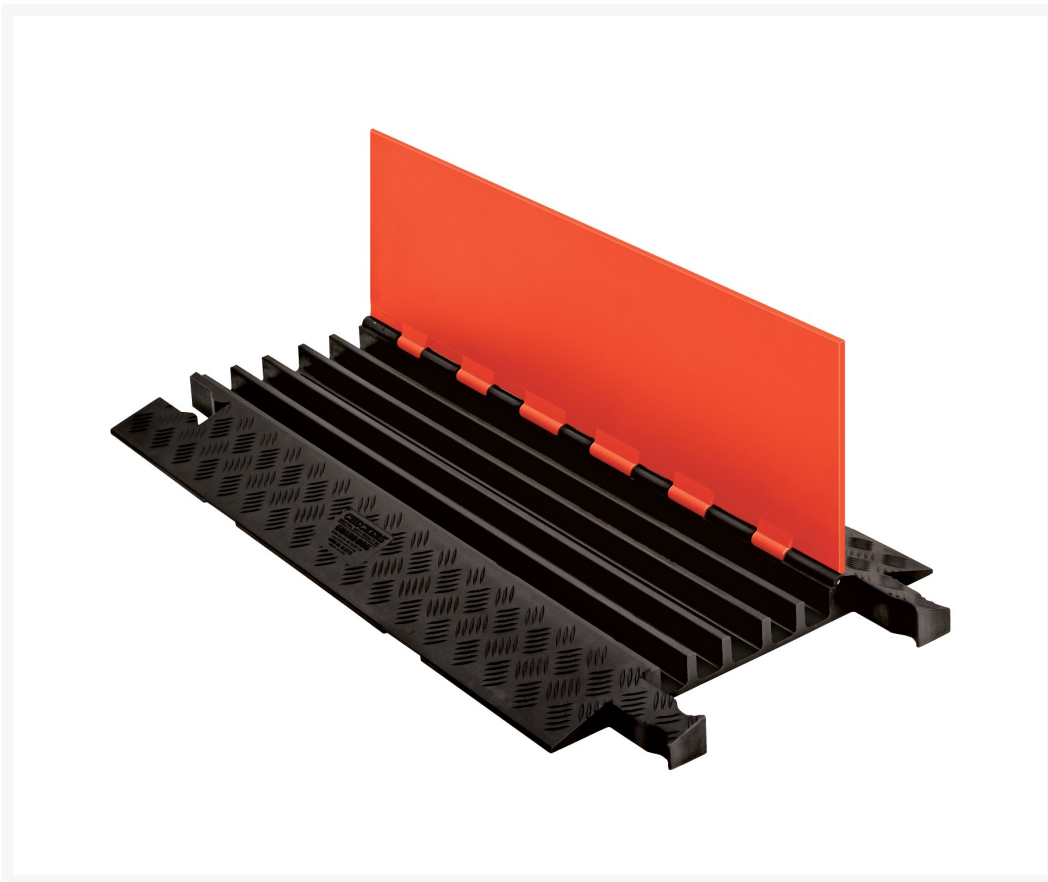
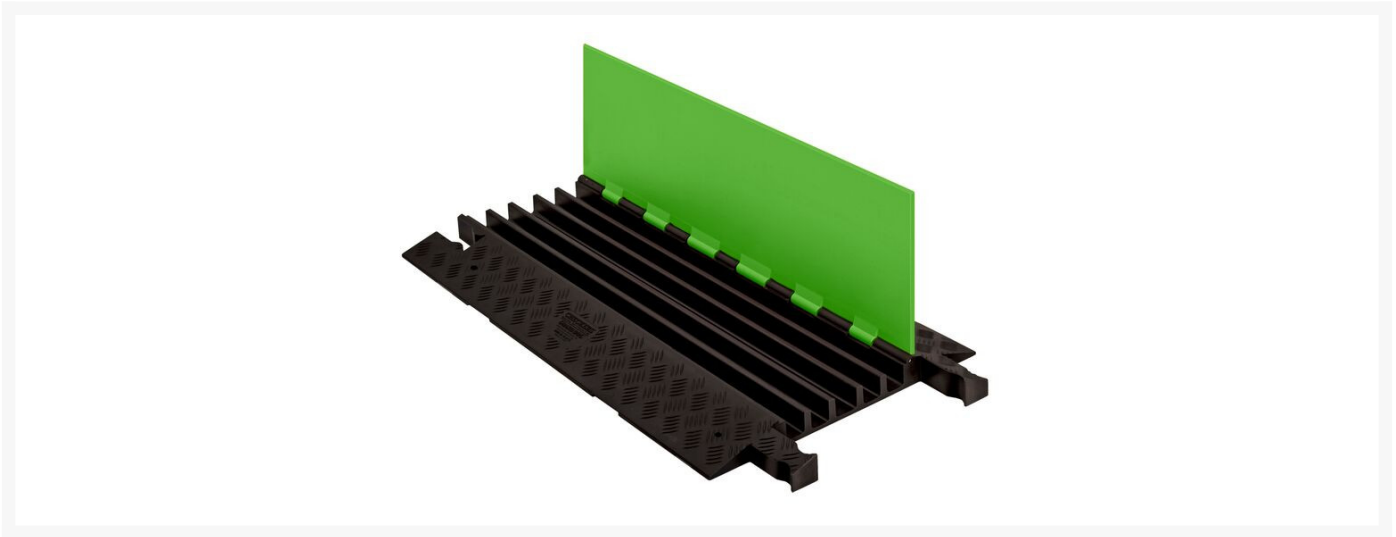


5-Channel Guard Dog® Cable Protectors for 1.325" Lines - GD5X125

Product Images





Short Description

- Protects cables and hoses up to 1.325" outside dia.
- Dog Bone® connectors to extend to any desired length
- Reinforced hinged lid for easy cable placement
- All-weather polyurethane construction
- Patented 5-bar tread surface for maximum traction
- Includes four through-holes for temporary mounting
- Ideal for use in amusement parks, entertainment venues, sporting events, and most public, commercial, industrial, construction, and utility applications
- Personalize cable protectors with your logo or colors. [Request a quote now.](#)

Description

The Guard Dog 5-Channel Cable Protector (model GD5X125) features a hinged lid, a modular, interlocking design, and the capacity to protect up to five cables and hoses with an outside diameter of up to 1.325". Its all-weather polyurethane construction gives it unmatched durability, and with the use of Dog Bone connectors, it can extend to any length. It also features a 5-bar tread surface, ensuring maximum traction for both vehicles and pedestrians.

Personalize cable protectors with your logo or colors. [Request a quote now.](#)

Because of its durability, it's equally suited for both commercial and industrial applications. Use it to keep electrical cables at an amusement park out of harm's way or protect critical hose lines from passing vehicles at an industrial site. Either way, it's more than up to the task, and its four through-holes ensure it can easily be secured to the base surface for a longer-term installation.

Our customers use the GD5X125 model to maintain compliance with NEC Article 525 and OSHA 1910.305 regulations, and more. Each cable protector includes two warning labels for added precautions and safety - a trip hazard warning and an electrical power hazard warning.

Checkers cable protectors are available in over one hundred models suitable for a variety of industries. This

ensures Checkers has a solution for any application, from use around the home to public events and entertainment venues to construction and oil and gas, and even mining. Cable protectors ship assembled and ready for immediate use.

Specifications

Model No	GD5X125-O/B / GD5X125-B/B / GD5X125-FLG/B
Brand	Checkers Safety™
Quantity Included	1
Load Capacity Per Axle	21000 lbs
Load Capacity Per Tire	10500
Length (Inches)	36
Width (Inches)	19.75
Height (Inches)	1.875
Max Cable Outside Diameter (Inches)	1.325
Number of Channels	5-Channels
Connector Type	Dog Bone Connector
Channel Width	1.339

Prop 65

⚠️WARNING: This product can expose you to chemicals including Lead, Carbon Black, Chromium, Nickel Compounds, and Sulfur Dioxide, which are known to the State of California to cause cancer and birth defects or other reproductive harm. For more information go to www.P65Warnings.ca.gov.

Product Options

Color:	Orange Lid / Black Base
--------	-------------------------

	Black Lid / Black Base
--	------------------------

	Green Lid / Black Base
--	------------------------