

Features

- Built in compliance with the construction and safety S1 specifications of standard EN 837-2
- Are designed for use with gaseous or liquid media which do not corrode copper alloy and which do not have high viscosity or do not crystallize
- Dial size 100 mm
- IP67
- Glycerine Filled
- Bottom connection
- Stainless Steel Case
- AISI 316L st.st. socket and bourdon tube
- Tempered glass window
- 1/2" BSP-Male
- Range 0/250 bar/psi

RS PRO Bourdon tube pressure gauges anti-vibration version

RS Stock No.: 152296



RS PRO is the own brand of RS. The RS PRO Seal of Approval is your assurance of professional quality, a guarantee that every part is rigorously tested, inspected, and audited against demanding standards. Making RS PRO the Smart Choice for our customers.

Product Description

Buy this product from www.rspro.com

These instruments are built in compliance with the construction and safety S1 specifications of standard EN 837-2.

They are designed for use on power station units, pump, hydro-cleaning machines, presses, engine compressors turbines, diesel engines, chemical, petrochemical and refrigerating plants and on machines and equipment where pulsating pressures or mechanical vibrations are apparent.

They can be used with gaseous or liquid media which do not corrode copper alloy and which do not have high viscosity or do not crystallize.

General Specifications

Mounting Type	Bottom Entry
Display type	Analogue
Series	RS 1.04.3
Case Material	Stainless Steel
Socket material	Copper alloy
Bourdon tube material	Copper alloy
Window Material	Tempered glass window
Ring Material	Stainless steel, crimped
Protection Degree	IP67

Mechanical Specifications

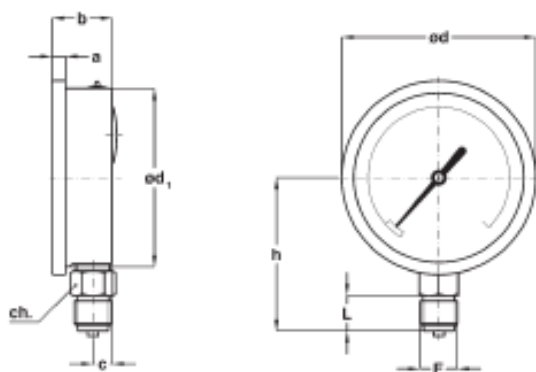
Pressure Range	0 → 250 bar/psi
Working Pressure	75% of FSV for static pressure; 66% of FSV for pulsating pressure
Maximum Pressure Measurement	250 bar
Minimum Pressure Measurement	0 bar
Connection Size	1/2" BSP Male
Gauge Outside Diameter	100 mm
Over pressure limit (15 min max)	15% of FSV
Accuracy Class	1,6 as per EN 837-1
Minimum Operating Temperature	0°C
Maximum Operating Temperature	+65°C
Calibrated	No

Approvals

Declarations	Directive 2014/68/EU - Pressure Equipment Directive (PED)
Standards Met	EN 837-1

Technical Specifications and Drawings

Filled Model – Bottom Connection



F	a	b	c	d	d1	h	L	Weight
G 1/2 A	7,5	34	11	110	101	87	20	0,63 kg

Dimensions: mm