

## Features

- Maximum operating pressure is 12 bar.
- Operating temperature range -20°C to +100°C.
- Material: argely Stainless Steel with 17% chromium content
- Plastic coupling body
- ISO 6150-C
- Single Shut Off System
- Large all-in-one steel push button (13% hardened chromium content)
- The functional parts have a great resistance to wear and tear, shocks and corrosion.
- 2-Stage push button coupler for safety

## RS PRO Pneumatic Quick Connect Coupling

RS Stock No.: 0309306



RS PRO is the own brand of RS. The RS PRO Seal of Approval is your assurance of professional quality, a guarantee that every part is rigorously tested, inspected, and audited against demanding standards. Making RS PRO the Smart Choice for our customers.

## Product Description

### RS PRO Series 107 Quick Connect Couplings Plugs

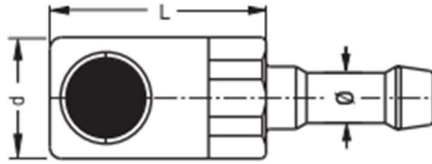
Pneumatic quick-connect coupling connectors are found across industry in pneumatic systems as diverse as robotic assembly lines and other equipment.

- Maximum operating pressure is 12 bar.
- Operating temperature range -20°C to +100°C.
- Material: largely Stainless Steel with 17% chromium content
- Plastic coupling body
- ISO 6150-C
- Single Shut Off System
- Large all-in-one steel push button (13% hardened chromium content)
- The functional parts have a great resistance to wear and tear, shocks and corrosion.
- 2-Stage push button coupler for safety

## Specifications

Manufacturer Series	107
Coupling Type	Quick Connect Coupling Socket
Connection Standard	ISO 6150-C
Minimum Operating Temperature	-20°C
Maximum Operating Temperature	+100°C
Maximum Operating Pressure	12 bar
Flow Direction & Sealing	Self-Sealing Coupling
Safety	2-Stage
Material	Stainless Steel
Finish	Plastic
Connection Type	Hose Barb
Thread Size	N/A
Thread Standard	N/A
Thread Gender	N/A
Coupling Gender	Female, Male
Threaded Connection	N/A
Seal material	Nitrite Rubber
Hose Barb Connection	8mm

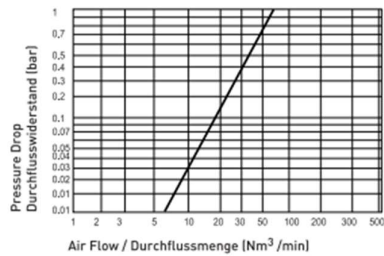
## Specifications



Couplings for Rubber Hoses

Dimensions (mm)		
d	L	T (dia)
27.5	50.5	8

Pneumatic charts flow rate/Pressure drop from the single shut-off system  
Pneumatische Durchflusswiderstandskurven mit einseitiger Absperrung (Druckluft)



### Couplings & Plugs - Kupplungen & Nippel

Standard  
Serie

Nominal Ø (mm) - Nennweite  
Cross section (mm²) - Querschnitt

5.5 mm  
23.5 mm²

Max. Working Press. -  
Max. Betriebsdruck

Bar  
PSI

12  
174

O-Ring (100°C)

NBR

