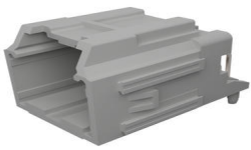




Part Number : [346916121](#)
Product Description : Stac64 Right-Angle Header
Assembly, Plastic Pin-Alignment-Plate, 12 Circuits,
Polarization B, Gray, Tray
Series Number : 34691
Status : Active
Product Category : PCB Headers and Receptacles



Documents & Resources

Drawings

[346916121_sd.pdf](#)
[PK-31300-892-000.pdf](#)

3D Models and Design Files


[STEP AP242](#)
[SOLIDWORKS](#)
[Creo](#)
[Symbol and Footprint \(Multi-Format\)](#)

Specifications

[347290200-AS-CH-000.pdf](#)
[AS-34729-020-001.pdf](#)
[PS-34729-020-001.pdf](#)

Product Environment Compliance

Compliance

| | |
|--------------------|-----------------------------------------------------------------------------------------------------------|
| GADSL/IMDS | Compliant with Exemption 44; 33 |
| China RoHS |  per SJ/T 11365-2006 |
| EU ELV | Compliant per 2000/53/EC |
| Low-Halogen Status | Low-Halogen per IEC 61249-2-21 |
| REACH SVHC | Not Contained per D(2025)4165-DC (25 June 2025) |
| EU RoHS | Compliant per EU 2015/863 |

Compliance Statements

- EU RoHS
- REACH SVHC
- Low-Halogen

Industry Documents

- IPC 1752A Class C
- IPC 1752A Class D
- Molex Product Compliance Declaration
- IEC-62474
- chemSHERPA (xml)

Substances of Interest

- PFAS

EU RoHS Certificate of Compliance

Additional Product Compliance Information

Part Details

General

| | |
|----------------|----------------------------------------------------------------------------------------------------------|
| Status | Active |
| Category | PCB Headers and Receptacles |
| Series | 34691 |
| Description | Stac64 Right-Angle Header Assembly, Plastic Pin-Alignment-Plate, 12 Circuits, Polarization B, Gray, Tray |
| Application | Automotive, Power, Wire-to-Board |
| Comments | Polarization B |
| Component Type | PCB Header |
| Product Name | Stac64 |
| UPC | 887191003658 |

Electrical

| | |
|-------------------------------|-------|
| Current - Maximum per Contact | 10.0A |
| Voltage - Maximum | 500V |

Physical

| | |
|-------------------|----|
| Breakaway | No |
| Circuits (Loaded) | 12 |

| | |
|--------------------------------|--------------------------------|
| Circuits (maximum) | 12 |
| Color - Resin | Gray |
| Durability (mating cycles max) | 10 |
| First Mate / Last Break | No |
| Glow-Wire Capable | No |
| Guide to Mating Part | No |
| Keying to Mating Part | None |
| Lock to Mating Part | Yes |
| Material - Metal | Brass |
| Material - Plating Mating | Tin |
| Material - Plating Termination | Tin |
| Material - Resin | High Temperature Thermoplastic |
| Net Weight | 6.472/g |
| Number of Rows | 2 |
| Orientation | Right Angle |
| Packaging Type | Tray |
| PCB Locator | Yes |
| PCB Retention | None |
| PCB Thickness - Recommended | 1.57mm |
| Pitch - Mating Interface | 2.54mm |
| Pitch - Termination Interface | 2.54mm |
| Polarized to Mating Part | Yes |
| Polarized to PCB | Yes |
| Shrouded | Yes |
| Stackable | No |
| Temperature Range - Operating | -40° to +105°C |
| Termination Interface Style | Through Hole |

Solder Process Data

| | |
|------------------------------|------|
| Max-Duration | 40 |
| Lead-Free Process Capability | WAVE |
| Max-Cycle | 3 |
| Max-Temp | 260 |

Mates With / Use With

Mates with Part(s)

| Description | Part Number |
|----------------------------|--------------|
| Stac64 Receptacle Housings | <u>34729</u> |