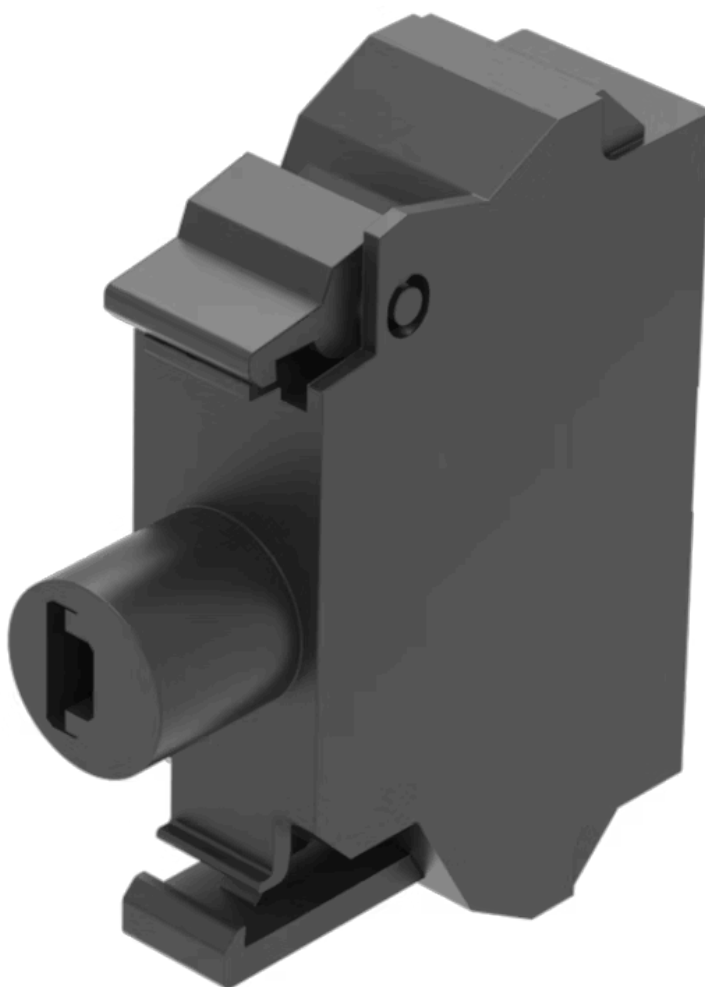


# Illumination element

45-320.1G42

Distribution by  
Rs-online



<https://rs-online.eao.com/p/45-320.1G42>

Your product:

---



## 45-320.1G42

### Illumination element

#### MOUNTING

**Component mounting type:** Front mounting

#### OPERATING-/INDICATION PART

**Illumination colour:** Yellow

#### ELECTRICAL CHARACTERISTICS

**Operating voltage:** 24 / 240 V AC/DC

**Surge voltage resistance:** 4 kV

**Lumi. Intensity:** 900 - 1400 mcd

#### MECHANICAL CHARACTERISTIC

**Terminal:** Spring-type terminal

**Terminal details 1:**  
Solid 2 x (0.25 ... 1.5mm<sup>2</sup>)  
Finely stranded  
– Without end sleeves 2 x (0.5 ... 1.5 mm<sup>2</sup>)  
– With end sleeves 2 x (0.5 ... 0.75 mm<sup>2</sup>)  
– For AWG cables for auxiliary contacts 2 x (24 ... 16)

**Weight:** 0.01 kg

#### CERTIFICATE

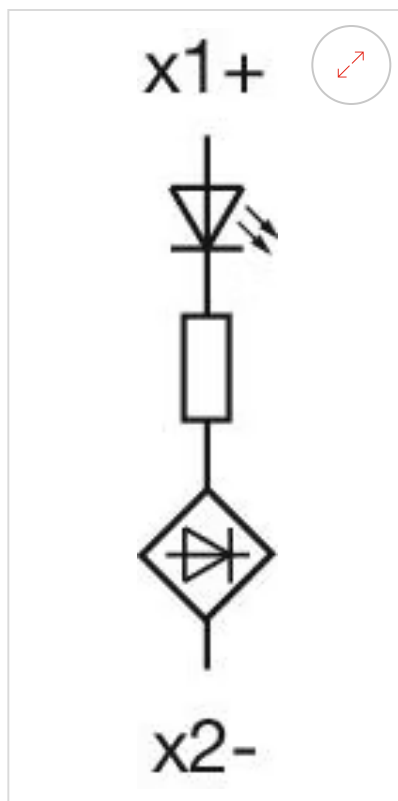
**REACH:** REACH compliant

**RoHS:** RoHS compliant

#### OTHER

**Short Description:**

Illumination element, Spring-type terminal, Yellow, 24 / 240 V AC/DC, Front mounting

**Wiring diagrams:****Dimension drawings:**