



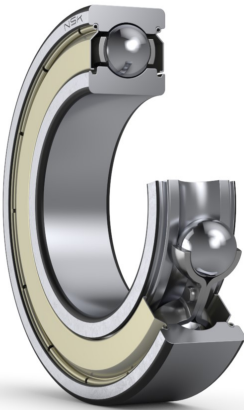
# PRODUCT DATASHEET

Datasheet creation date: 2025/07/08 2:39 (UTC)



## 6208ZZ

### Single-Row Deep Groove Ball Bearings



#### Boundary Dimensions

d	40	mm	Bore diameter
D	80	mm	Outside diameter
B	18	mm	Width
r (min.)	1.1	mm	Chamfer dimension

#### Basic Load Ratings

Cr	32000	N	Basic dynamic load rating
C0r	17900	N	Basic static load rating

#### Speeds

Grease	9500	min-1	Grease lubrication
--------	------	-------	--------------------

#### Abutment and Fillet Dimensions

da (min.)	46.5	mm	Diameter of shaft abutment
da (max.)	50.5	mm	Diameter of shaft abutment
Da (max.)	73.5	mm	Diameter of housing abutment
ra (max.)	1	mm	Radius of shaft or housing fillet

#### Calculation factors

fo	14		Factor
----	----	--	--------

#### Additional information

z	9		Number of Balls
Dw	11.906	mm	Ball Diameter

#### Mass

Mass approx.	0.366	kg	Mass approx.
--------------	-------	----	--------------

