



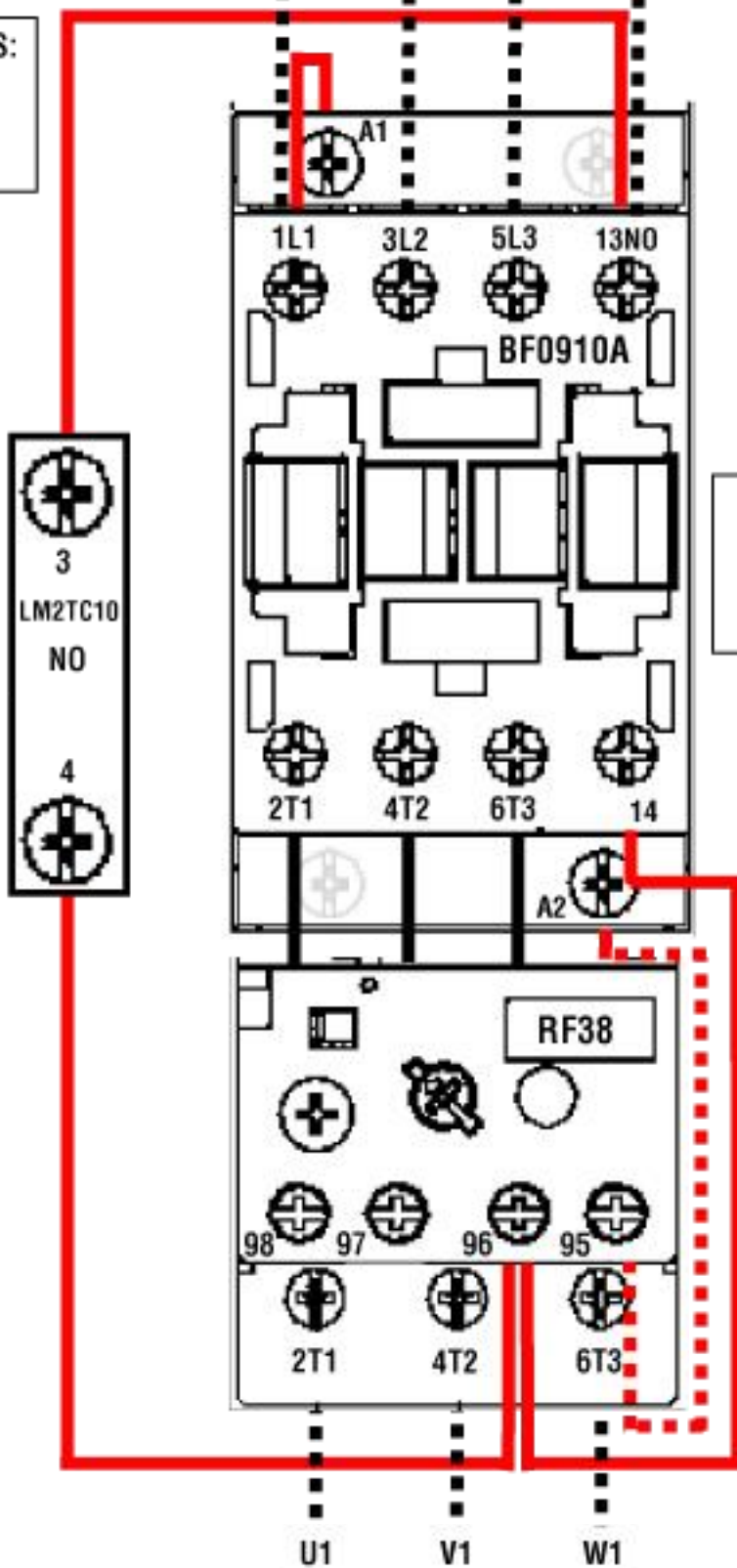
725-5503
725-5516
725-5513

① WIRING DIAGRAM FOR 3 PHASE SUPPLY WITH 230V COIL

MFERS PART NOS:
DOLS5.5230
DOLS7.5230
DOLS11230

② INCOMING TPN SUPPLY

L1 L2 L3 N



KEY

③ CONTROL WIRING ALREADY INCLUDED

④ CONNECTIONS TO BE MADE BY INSTALLER

**RF38 INTERNAL 95-A2 CONNECTION

⑤ **WARNING**
TO PREVENT RISK OF DAMAGE OR SAFETY HAZARDS, THIS EQUIPMENT SHOULD ONLY BE INSTALLED BY SUITABLY QUALIFIED OR COMPETENT PERSONS AND IN ACCORDANCE WITH ALL APPLICABLE ELECTRICAL REGULATIONS

BF0910A230/
BF1810A230/
BF2510A230
CONTACTOR

⑥ RF38 THERMAL RELAY (TO BE ORDERED SEPARATELY)

⑦ **INSTALLER TO CONNECT COPPER 4TH PIN TO LOWER A2 ON CONTACTOR & FLYING LEADS TO 96 ONLY

DO NOT CONNECT ANY WIRES TO 95 BUT ENSURE 95 & A2 TERMINALS ARE TIGHTENED

⑩ OUTGOING SUPPLY TO 3PH MOTOR

U1 V1 W1