

The innovative SBE® connectors provide cost-effective reliability, design flexibility and safety for your products' manufacture, installation and maintenance.

APP's 2 pole connector is available with a 160 amp rating, 150 Volts continuous AC or DC operation. There are SBE® connectors for many applications and wire sizes, 1/0 to 35 mm (53.5 mm to 35 mm). Mechanical keys ensure connectors will only mate with connectors of the same color. Different color housings are selected to identify voltages, thus preventing mismatching of the power supply system.

## FEATURES

- Finger proofing**  
*Helps prevent fingers (or probes) from accidentally touching live contacts. SBE®160 connector meets EN1175 requirements.*
- Auxiliary contacts**  
*Provides ability to incorporate a secondary sensor control circuit*
- Optional air supply system**  
*Supplies air to battery during charging*



## PRODUCT SPECIFICATIONS

Connector Model	SBE®160	Connector Model	SBE®160
UL Current Rating (Amperes)*	160*	Life	
UL Voltage Ratings (Volts)	150*	a. No load (Contact/Disconnect Cycles)	To 10,000
Contact Barrel Wire Size (AWG)	1/0 to 35 mm	b. Under Load (Hot Plug 250 cycles @ 120V)	75A
(mm <sup>2</sup> )	53.5 to 35	Avg. Connection/Disconnect (lbs)	25
Maximum Wire Insulation Diameter (inches)	0.75	Operating Temperature Range °C**	-20° to 105°
(mm)	19.05	Flammability Rating of Housing Material	UL94 V-0
AVG Contact Resistance* (micro-ohms)	100		
Insulation Withstanding Test Voltage (Volts AC/DC)	1300		
Contact Retention Force (lbs)	300		

\* UL Rated for 65°C rated wire or cable size  
\*\* Contact factory for higher temperature rated connector  
\*\*\* TUV on SBE160  
SBE®, UL and CSA Reference: This equipment is an Underwriters Laboratories Inc® recognized component. It is also listed by the Canadian Standards Association as certified.

## ORDERING INFORMATION

### 2 Pole Housing, 160 amp Contacts, & Auxiliary Contacts

Part Number	Housing Color	Wire sq. mm
E6370G2	Gray	35
E6371G2	Blue	35
E6372G2	Orange	35
E6373G2	Yellow	35
E6378G2	Red	35
E6387G2	Green	35
E6388G2	Black	35

### 2 Pole Housing & Contacts

Part Number	Housing Color	Wire sq. mm
E6374G2	Gray	35
E6375G2	Blue	35
E6376G2	Orange	35
E6377G2	Yellow	35

### 2 pole housing & contacts continued

Part Number	Housing Color	Wire sq. mm
E6379G2	Red	35
E6391G2	Green	35
E6389G2	Black	35

### Housings Only

Part Number	Color
E6380G1	Gray
E6381G1	Blue
E6382G1	Orange
E6383G1	Yellow
E6385G1	Red
E6390G1	Green
E6392G1	Black

### Contacts

Part Number	Description	AWG	Wire sq. mm
6384G2	Contact set (2)	N/A	35
6384G1	Contact set (2)	1/0	53.5

### Accessories

Part Number	Description
6344	Auxiliary contact kit
6337G1	Charger key
995G1	Handle with hardware "A" frame
993G2	Manual release-battery bracket with hardware
994G2	Manual release-charger/truck bracket with hardware
945G2	Cable clamps-use alone with manual release or "A" frame handle
Pin/tube kit	
6367G1	#16/12(1.31/3.31mm)-for battery-pin
6366G2	#16/12(1.31/3.31mm)-for charger & truck-tube

...continued on next page

## ORDERING INFORMATION

accessories continued

### Bushings

Part Number	Description	Wire	
		AWG	sq. mm
5687	For use with 6384G1	1/0 to #1	53.5 to 42.41
5690	For use with 6384G1	1/0 to #2	53.5 to 33.62
5693	For use with 6384G1	1/0 to #4	53.5 to 21.15
5663	For use with 6384G1	1/0 to #6	53.5 to 13.30
5648	For use with 6384G1	1/0 to #10	53.5 to 5.26
5920	For use with 6384G2	35mm to 16mm	

### Tooling

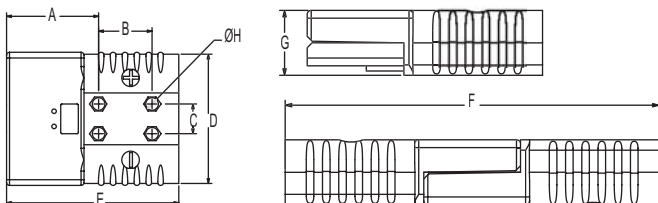
Part Number	Description
969P1	Extraction tool-insulated handle
111038G2	Contact insertion/extraction tool for auxiliary contact kit
1368	Hand tool for 1/0 to 35mm (53.5/35)
1387G1	Pneumatic tool
1388G3	- die for 1/0 to #10 (53.5/5.26)
1389G3	- locator for 1/0 to #10 (53.5/5.26)
111038G2	Insertion/extraction tool

## DIMENSIONS

### SBE® Housing

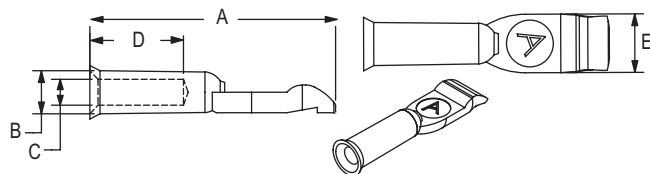
Series	-A-		-B-		-C-		-D-	
	mm	in.	mm	in.	mm	in.	mm	in.
SBE®160	49.2	1.94	28.5	1.13	15.9	0.63	71.2	2.80

Series	-E-		-F-		-G-	
	mm	in.	mm	in.	mm	in.
SBE®160	92.2	3.63	146.3	5.76	25.4	1.00



### Contacts

	-A-		-B-		-C-		-D-		-E-	
	mm	in.	mm	in.	mm	in.	mm	in.	mm	in.
6384G1	59.2	2.33	13	.51	11.1	.44	21.3	.84	12.7	.50
6384G2	59.2	2.33	13	.51	9.5	.38	21.3	.84	12.7	.50



## TEMPERATURE RISE CHARTS

